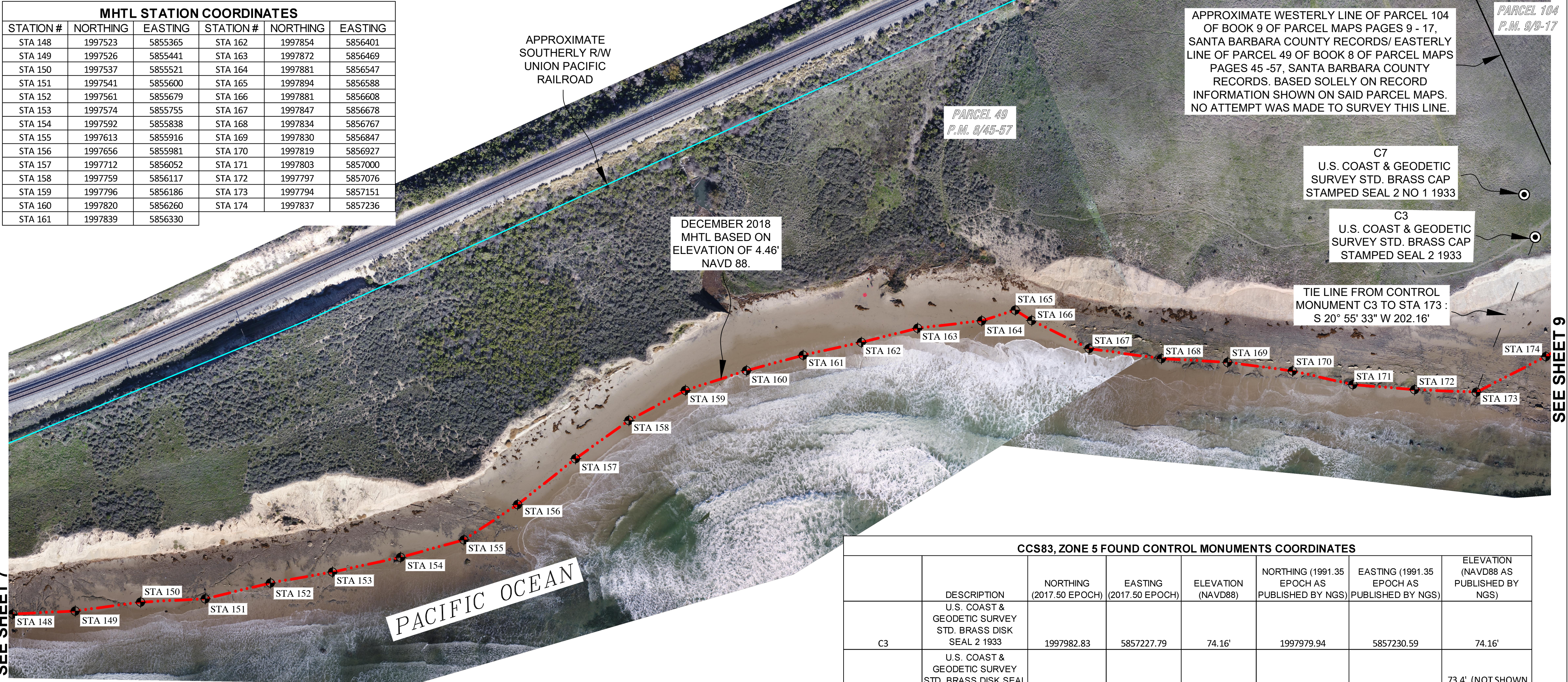


MHTL STATION COORDINATES					
STATION #	NORTHING	EASTING	STATION #	NORTHING	EASTING
STA 148	1997523	5855365	STA 162	1997854	5856401
STA 149	1997526	5855441	STA 163	1997872	5856469
STA 150	1997537	5855521	STA 164	1997881	5856547
STA 151	1997541	5855600	STA 165	1997894	5856588
STA 152	1997561	5855679	STA 166	1997881	5856608
STA 153	1997574	5855755	STA 167	1997847	5856678
STA 154	1997592	5855838	STA 168	1997834	5856767
STA 155	1997613	5855916	STA 169	1997830	5856847
STA 156	1997656	5855981	STA 170	1997819	5856927
STA 157	1997712	5856052	STA 171	1997803	5857000
STA 158	1997759	5856117	STA 172	1997797	5857076
STA 159	1997796	5856186	STA 173	1997794	5857151
STA 160	1997820	5856260	STA 174	1997837	5857236
STA 161	1997839	5856330			



CCS83, ZONE 5 FOUND CONTROL MONUMENTS COORDINATES							
	DESCRIPTION	NORTHING (2017.50 EPOCH)	EASTING (2017.50 EPOCH)	ELEVATION (NAVD88)	NORTHING (1991.35 EPOCH AS PUBLISHED BY NGS)	EASTING (1991.35 EPOCH AS PUBLISHED BY NGS)	ELEVATION (NAVD88 AS PUBLISHED BY NGS)
C3	U.S. COAST & GEODETIC SURVEY STD. BRASS DISK SEAL 2 1933	1997982.83	5857227.79	74.16'	1997979.94	5857230.59	74.16'
C7	U.S. COAST & GEODETIC SURVEY STD. BRASS DISK SEAL 2 NO 1 1933	1998033.87	5857216.81	74.18'	1998030.95	5857219.65	73.4' (NOT SHOWN AS READJUSTED)

SEE SHEET 7

SEE SHEET 9

LEGEND

- DECEMBER 2018 MEAN HIGH TIDE LINE (MHTL) PER FIELD SURVEYS PERFORMED BY CSLC STAFF DEC. 4, 5, 18, 19, & 20, 2018 AND BASED ON AN ELEVATION OF 4.46' NAVD 88.
- APPROXIMATE SOUTHERLY R/W OF UNION PACIFIC RAILROAD, BASED ON RECORD INFORMATION DEPICTED ON SANTA BARBARA COUNTY PARCEL MAPS FILED IN BOOK 8 OF PARCEL MAPS AT PAGES 45 -57 AND BOOK 9 OF PARCEL MAPS AT PAGES 9 - 17.
- MHTL STATION POINT

NOTES

- THE UNITS FOR ALL COORDINATES AS SHOWN ARE US SURVEY FEET, UNLESS OTHERWISE NOTED.
- AERIAL PHOTOGRAPHY PER CSLC UAV IMAGERY OBTAINED DECEMBER 18 THRU 20, 2018, AND JANUARY 29 THRU 31, 2019.
- THIS PLAT HAS NOT BEEN APPROVED BY THE STATE LANDS COMMISSION AND DOES NOT CONSTITUTE AN OFFICIAL PLAT OF SUCH COMMISSION. NOR DOES IT ESTABLISH THE BOUNDARY LINES OR LIMITATIONS OF ANY STATE-OWNED LANDS DEPICTED HEREON.

SURVEY OF THE  
MEAN HIGH TIDE LINE  
DECEMBER 4, 5, 18, 19, & 20, 2018,  
JANUARY 29, 30, 31, AND  
MARCH 18, 2019  
HOLLISTER RANCH  
SANTA BARBARA COUNTY

CALIFORNIA STATE  
LANDS COMMISSION



DRAWING NAME:	FILE NO.:	SHEET 8 8 OF 24
SD20180809-SH6-9.DWG	SD20180809.1	
DRAWN BY: JOSEPH PORTER, PLS 8266 CHECKED BY:		
DATE: 4/4/19	SCALE: 1"=80'	