

## **APPENDIX C1**

---

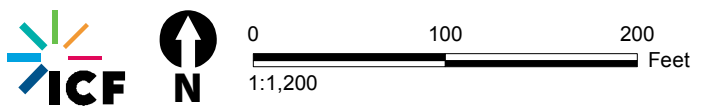
### Habitat Types in the Biological Study Area

\\PDC\IT\RD\GIS\Projects\_1\RTI\_Solutions\00718\_17\_Manchester\Figures\DocBA\Fig\_X\_Landcover.mxd User: 19016 Date: 2/13/2019



- Legend**
- Notes**
- Biological Study Area
  - Area Without Access
  - Cable Landing Parcel APN 132-170-11
  - Cable Landing Stations (CLS)
- Land Cover**
- Closed-Cone Pine-Cypress
  - Coastal Scrub
  - Urban
  - Nonnative Annual Grassland
  - Perennial Grassland
  - Riverine\*
  - Valley Foothill Riparian
  - Wet Meadow\*
- Rare Plants**
- Mendocino paintbrush (CRPR 1B.2)

\*Includes potential USACE and CCC jurisdictional features





\\PDC\IT\RD\GIS\1\Projects\_1\RTI\_Solutions\00718\_17\_Manchester\Figures\Doc\BA\Fig\_X\_Landcover.mxd User: 19016 Date: 2/13/2019



- Legend**
- Notes**
- Biological Study Area
  - Area Without Access
  - Cable Landing Parcel APN 132-170-11
  - Cable Landing Stations (CLS)
- Land Cover**
- Closed-Cone Pine-Cypress
  - Coastal Scrub
  - Urban
  - Nonnative Annual Grassland
  - Perennial Grassland
  - Riverine\*
  - Valley Foothill Riparian
  - Wet Meadow\*
- Rare Plants**
- Harlequin lotus (CRPR 4.2)

\*Includes potential USACE and CCC jurisdictional features

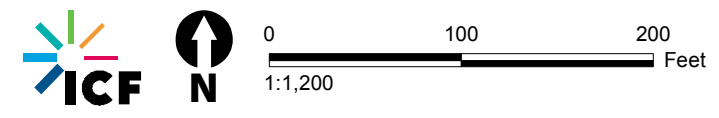


\\PDC\IT\RD\GIS\Projects\_1\RTI\_Solutions\00718\_17\_Manchester\Figures\Doc\BA\Fig\_X\_Landcover.mxd User: 19016 Date: 2/13/2019



- Legend**
- Notes**
- Biological Study Area
  - Area Without Access
  - Cable Landing Parcel APN 132-170-11
  - Cable Landing Stations (CLS)
- Land Cover**
- Closed-Cone Pine-Cypress
  - Coastal Scrub
  - Urban
  - Nonnative Annual Grassland
  - Perennial Grassland
  - Riverine\*
  - Valley Foothill Riparian
  - Wet Meadow\*

\*Includes potential USACE and CCC jurisdictional features



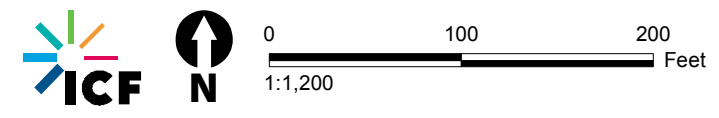


\\PDC\ITRDSGIS\Projects\_1\RTI\_Solutions\00718\_17\_Manchester\Figures\Doc\BA\Fig\_X\_Landcover.mxd User: 19016 Date: 2/13/2019



- Legend**
- Notes**
- Biological Study Area
  - Area Without Access
  - Cable Landing Parcel APN 132-170-11
  - Cable Landing Stations (CLS)
- Land Cover**
- Closed-Cone Pine-Cypress
  - Coastal Scrub
  - Urban
  - Nonnative Annual Grassland
  - Perennial Grassland
  - Riverine\*
  - Valley Foothill Riparian
  - Wet Meadow\*

\*Includes potential USACE and CCC jurisdictional features



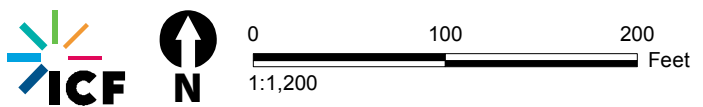


\\PDC\ITRDS\GIS\Projects\_1\RTI\_Solutions\00718\_17\_Manchester\Figures\Doc\BA\Fig\_X\_Landcover.mxd User: 19016 Date: 2/13/2019



- Legend**
- Notes**
- Biological Study Area
  - Area Without Access
  - Cable Landing Parcel APN 132-170-11
  - Cable Landing Stations (CLS)
- Land Cover**
- Closed-Cone Pine-Cypress
  - Coastal Scrub
  - Urban
  - Nonnative Annual Grassland
  - Perennial Grassland
  - Riverine\*
  - Valley Foothill Riparian
  - Wet Meadow\*

\*Includes potential USACE and CCC jurisdictional features



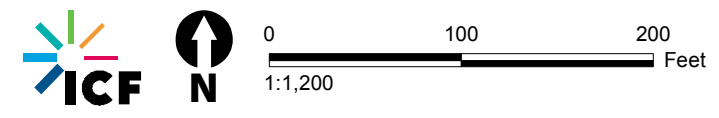


\\PDC\ITRDSGIS\Projects\_1\RTI\_Solutions\0718\_17\_Manchester\Figures\Doc\BA\Fig\_X\_Landcover.mxd User: 19016 Date: 2/13/2019



- Legend**
- Notes**
- Biological Study Area
  - Area Without Access
  - Cable Landing Parcel APN 132-170-11
  - Cable Landing Stations (CLS)
- Land Cover**
- Closed-Cone Pine-Cypress
  - Coastal Scrub
  - Urban
  - Nonnative Annual Grassland
  - Perennial Grassland
  - Riverine\*
  - Valley Foothill Riparian
  - Wet Meadow\*

\*Includes potential USACE and CCC jurisdictional features



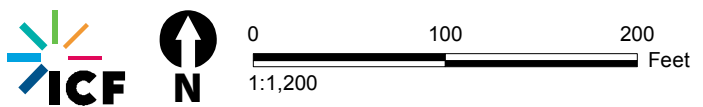


\\PDC\ITRDSGIS\Projects\_1\RTI\_Solutions\00718\_17\_Manchester\Figures\Doc\BA\Fig\_X\_Landcover.mxd User: 19016 Date: 2/13/2019



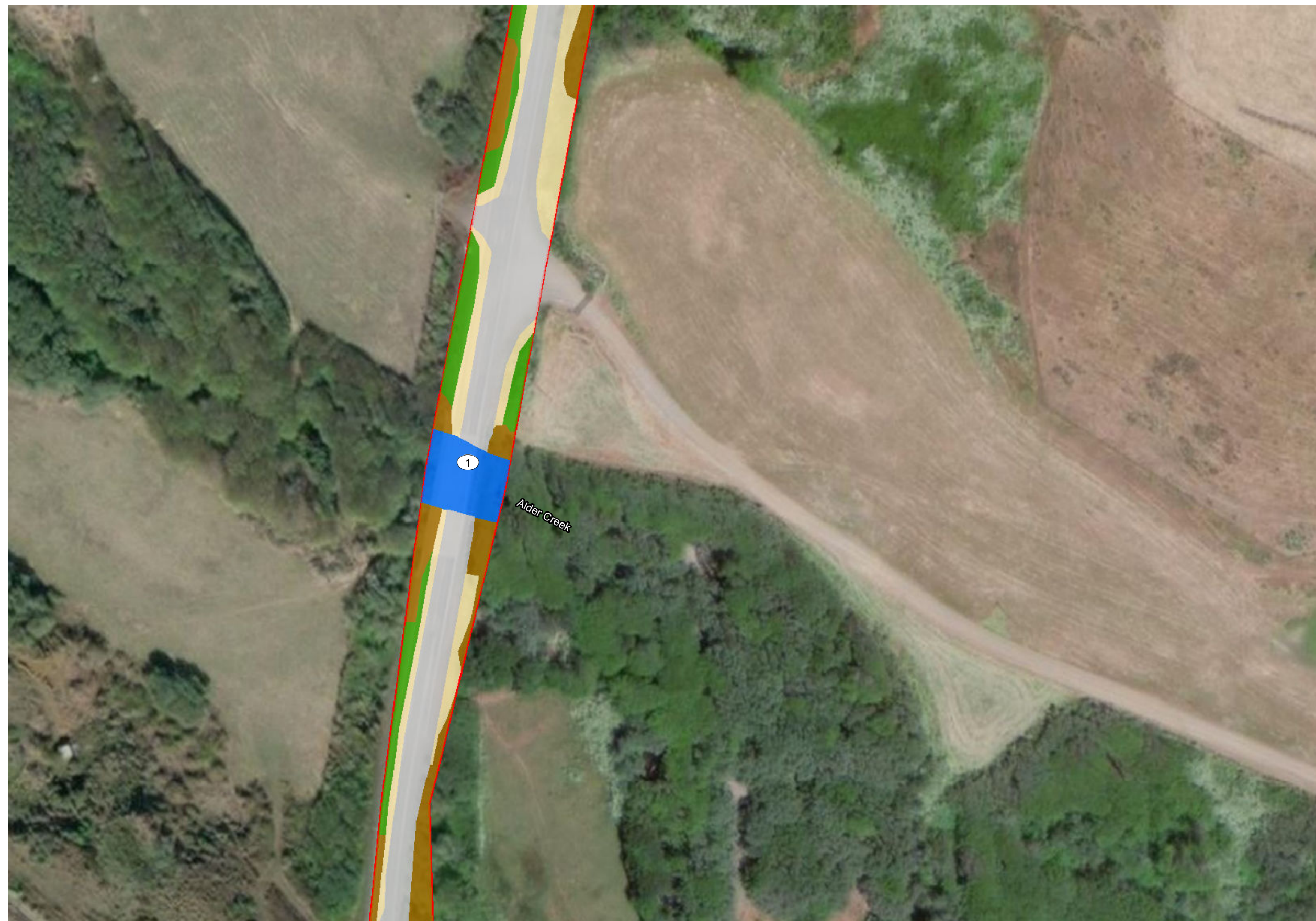
- Legend**
- Notes**
- Biological Study Area
  - Area Without Access
  - Cable Landing Parcel APN 132-170-11
  - Cable Landing Stations (CLS)
- Land Cover**
- Closed-Cone Pine-Cypress
  - Coastal Scrub
  - Urban
  - Nonnative Annual Grassland
  - Perennial Grassland
  - Riverine\*
  - Valley Foothill Riparian
  - Wet Meadow\*

\*Includes potential USACE and CCC jurisdictional features



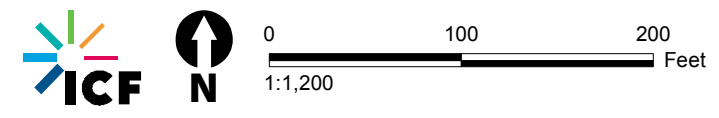


\\PDC\ITRDS\GIS\Projects\_1\RTI\_Solutions\00718\_17\_Manchester\Figures\Doc\BA\Fig\_X\_Landcover.mxd User: 19016 Date: 2/13/2019



- Legend**
- Notes**
- Biological Study Area
  - Area Without Access
  - Cable Landing Parcel APN 132-170-11
  - Cable Landing Stations (CLS)
- Land Cover**
- Closed-Cone Pine-Cypress
  - Coastal Scrub
  - Urban
  - Nonnative Annual Grassland
  - Perennial Grassland
  - Riverine\*
  - Valley Foothill Riparian
  - Wet Meadow\*

\*Includes potential USACE and CCC jurisdictional features



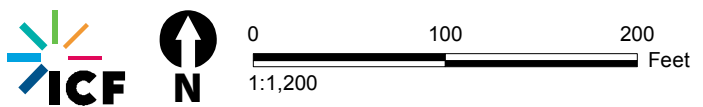


\\PDC\ITRDS\GIS\Projects\_1\RTI\_Solutions\00718\_17\_Manchester\Figures\Doc\BA\Fig\_X\_Landcover.mxd User: 19016 Date: 2/13/2019



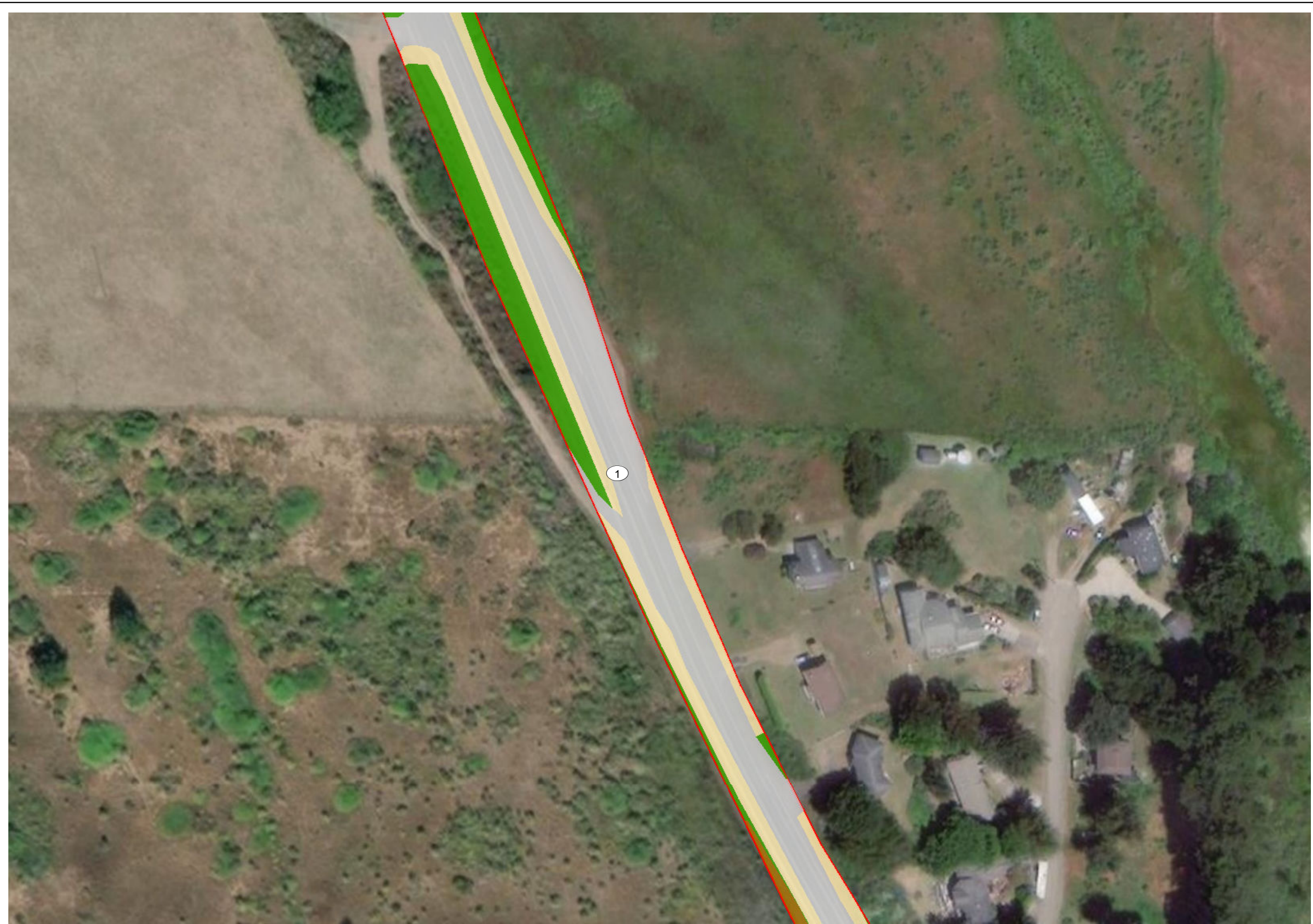
- Legend**
- Notes**
- Biological Study Area
  - Area Without Access
  - Cable Landing Parcel APN 132-170-11
  - Cable Landing Stations (CLS)
- Land Cover**
- Closed-Cone Pine-Cypress
  - Coastal Scrub
  - Urban
  - Nonnative Annual Grassland
  - Perennial Grassland
  - Riverine\*
  - Valley Foothill Riparian
  - Wet Meadow\*

\*Includes potential USACE and CCC jurisdictional features



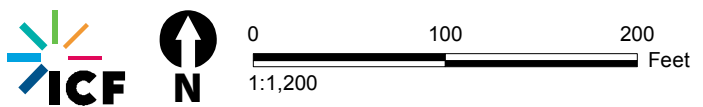


\\PDC\ITRDS\GIS\Projects\_1\RTI\_Solutions\00718\_17\_Manchester\Figures\Doc\BA\Fig\_X\_Landcover.mxd User: 19016 Date: 2/13/2019



- Legend**
- Notes**
- Biological Study Area
  - Area Without Access
  - Cable Landing Parcel  
APN 132-170-11
  - Cable Landing Stations (CLS)
- Land Cover**
- Closed-Cone Pine-Cypress
  - Coastal Scrub
  - Urban
  - Nonnative Annual Grassland
  - Perennial Grassland
  - Riverine\*
  - Valley Foothill Riparian
  - Wet Meadow\*

\*Includes potential USACE and CCC jurisdictional features



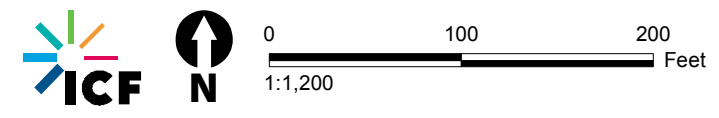


\\PDC\IT\RD\GIS\1\Projects\_1\RTI\_Solutions\00718\_17\_Manchester\Figures\Doc\BA\Fig\_X\_Landcover.mxd User: 19016 Date: 2/13/2019



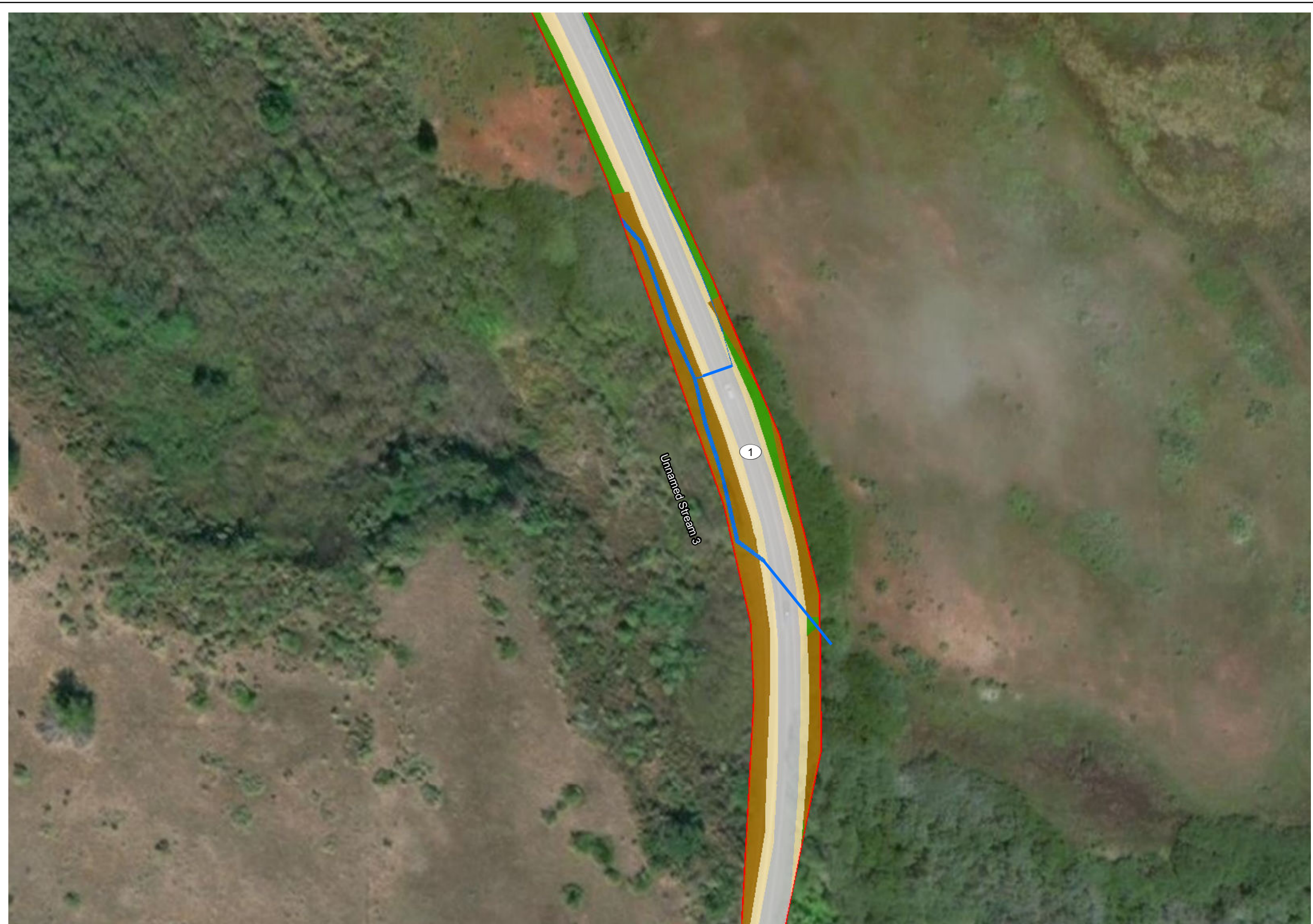
- Legend**
- Notes**
- Biological Study Area
  - Area Without Access
  - Cable Landing Parcel APN 132-170-11
  - Cable Landing Stations (CLS)
- Land Cover**
- Closed-Cone Pine-Cypress
  - Coastal Scrub
  - Urban
  - Nonnative Annual Grassland
  - Perennial Grassland
  - Riverine\*
  - Valley Foothill Riparian
  - Wet Meadow\*

\*Includes potential USACE and CCC jurisdictional features



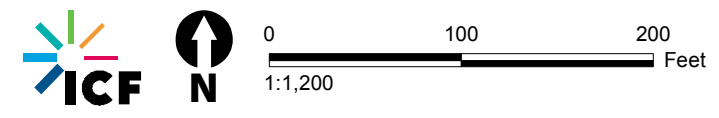


\\PDC\ITRDSGIS\Projects\_1\RTI\_Solutions\00718\_17\_Manchester\Figures\Doc\BA\Fig\_X\_Landcover.mxd User: 19016 Date: 2/13/2019



- Legend**
- Notes**
- Biological Study Area
  - Area Without Access
  - Cable Landing Parcel  
APN 132-170-11
  - Cable Landing Stations (CLS)
- Land Cover**
- Closed-Cone Pine-Cypress
  - Coastal Scrub
  - Urban
  - Nonnative Annual Grassland
  - Perennial Grassland
  - Riverine\*
  - Valley Foothill Riparian
  - Wet Meadow\*

\*Includes potential USACE and CCC jurisdictional features



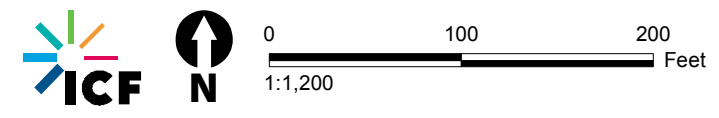


\\PDC\ITRDSGIS\Projects\_1\RTI\_Solutions\00718\_17\_Manchester\Figures\Doc\BA\Fig\_X\_Landcover.mxd User: 19016 Date: 2/13/2019



- Legend**
- Notes**
- Biological Study Area
  - Area Without Access
  - Cable Landing Parcel  
APN 132-170-11
  - Cable Landing Stations (CLS)
- Land Cover**
- Closed-Cone Pine-Cypress
  - Coastal Scrub
  - Urban
  - Nonnative Annual Grassland
  - Perennial Grassland
  - Riverine\*
  - Valley Foothill Riparian
  - Wet Meadow\*

\*Includes potential USACE and CCC jurisdictional features



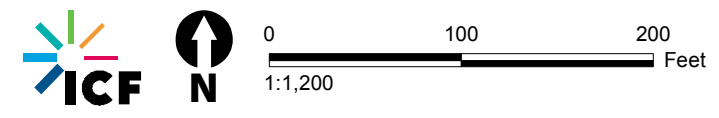


\\PDC\ITRDSGIS\Projects\_1\RTI\_Solutions\00718\_17\_Manchester\Figures\DocBA\Fig\_X\_Landcover.mxd User: 19016 Date: 2/13/2019



- Legend**
- Notes**
- Biological Study Area
  - Area Without Access
  - Cable Landing Parcel APN 132-170-11
  - Cable Landing Stations (CLS)
- Land Cover**
- Closed-Cone Pine-Cypress
  - Coastal Scrub
  - Urban
  - Nonnative Annual Grassland
  - Perennial Grassland
  - Riverine\*
  - Valley Foothill Riparian
  - Wet Meadow\*

\*Includes potential USACE and CCC jurisdictional features



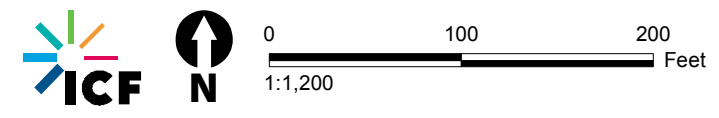


\\PDC\IT\RD\GIS\Projects\_1\RTI\_Solutions\00718\_17\_Manchester\Figures\Doc\BA\Fig\_X\_Landcover.mxd User: 19016 Date: 2/13/2019



- Legend**
- Notes**
- Biological Study Area
  - Area Without Access
  - Cable Landing Parcel APN 132-170-11
  - Cable Landing Stations (CLS)
- Land Cover**
- Closed-Cone Pine-Cypress
  - Coastal Scrub
  - Urban
  - Nonnative Annual Grassland
  - Perennial Grassland
  - Riverine\*
  - Valley Foothill Riparian
  - Wet Meadow\*

\*Includes potential USACE and CCC jurisdictional features



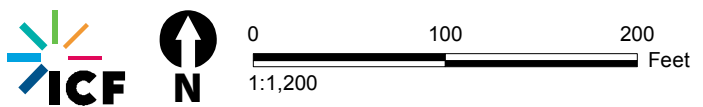


\\PDC\ITRDS\GIS\Projects\_1\RTI\_Solutions\00718\_17\_Manchester\Figures\Doc\BA\Fig\_X\_Landcover.mxd User: 19016 Date: 2/13/2019



- Legend**
- Notes**
- Biological Study Area
  - Area Without Access
  - Cable Landing Parcel APN 132-170-11
  - Cable Landing Stations (CLS)
- Land Cover**
- Closed-Cone Pine-Cypress
  - Coastal Scrub
  - Urban
  - Nonnative Annual Grassland
  - Perennial Grassland
  - Riverine\*
  - Valley Foothill Riparian
  - Wet Meadow\*

\*Includes potential USACE and CCC jurisdictional features



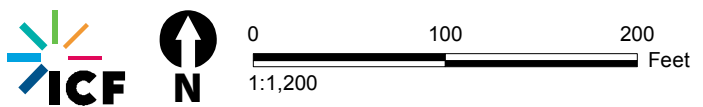


\\PDC\ITRDSGIS\Projects\_1\RTI\_Solutions\0718\_17\_Manchester\Figures\DocBA\Fig\_X\_Landcover.mxd User: 19016 Date: 2/13/2019



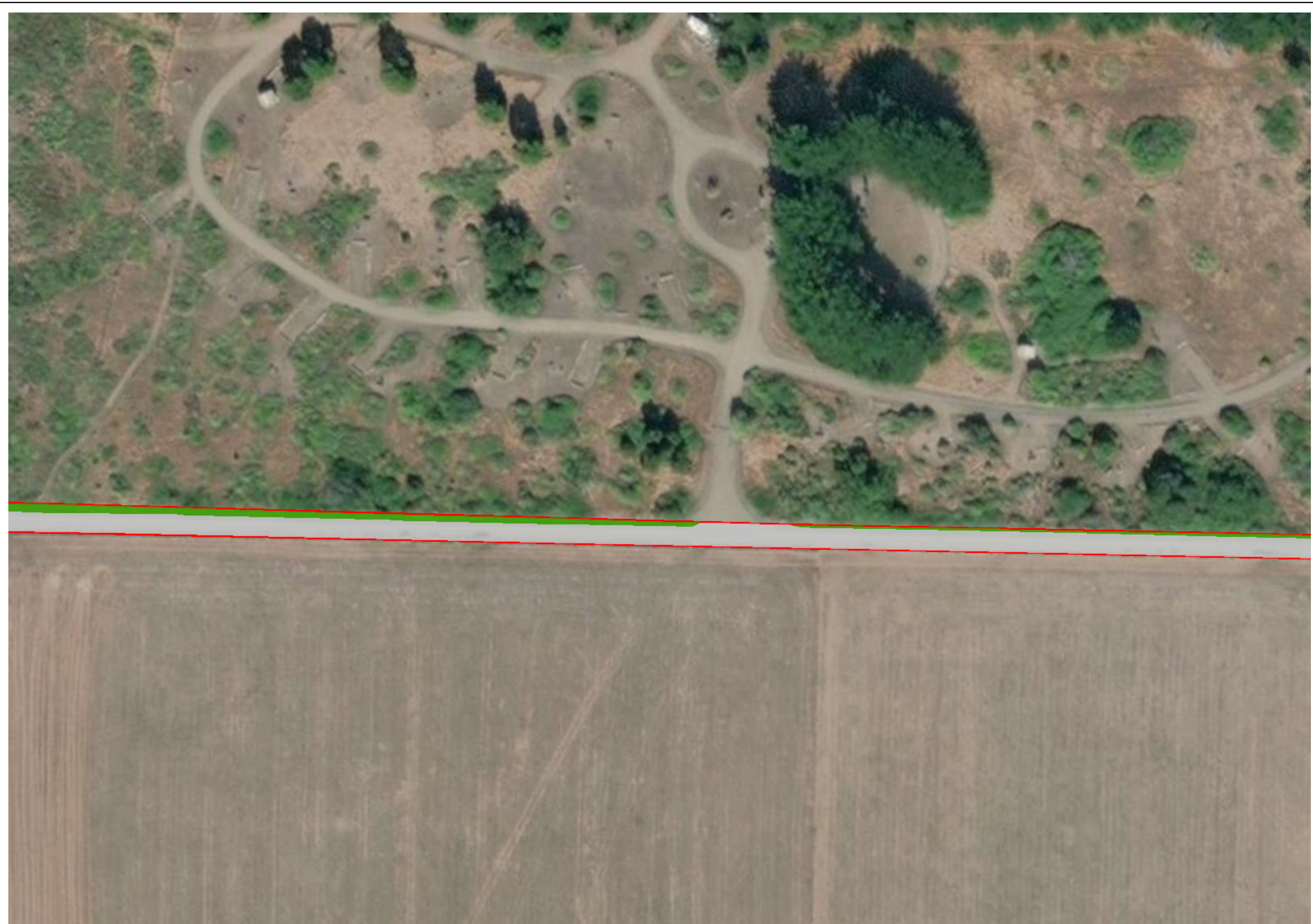
- Legend**
- Notes**
- Biological Study Area
  - Area Without Access
  - Cable Landing Parcel APN 132-170-11
  - Cable Landing Stations (CLS)
- Land Cover**
- Closed-Cone Pine-Cypress
  - Coastal Scrub
  - Urban
  - Nonnative Annual Grassland
  - Perennial Grassland
  - Riverine\*
  - Valley Foothill Riparian
  - Wet Meadow\*

\*Includes potential USACE and CCC jurisdictional features



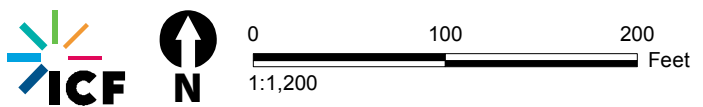


\\PDC\ITRDSGIS\Projects\_1\RTI\_Solutions\00718\_17\_Manchester\Figures\Doc\BA\Fig\_X\_Landcover.mxd User: 19016 Date: 2/13/2019



- Legend**
- Notes**
- Biological Study Area
  - Area Without Access
  - Cable Landing Parcel APN 132-170-11
  - Cable Landing Stations (CLS)
- Land Cover**
- Closed-Cone Pine-Cypress
  - Coastal Scrub
  - Urban
  - Nonnative Annual Grassland
  - Perennial Grassland
  - Riverine\*
  - Valley Foothill Riparian
  - Wet Meadow\*

\*Includes potential USACE and CCC jurisdictional features



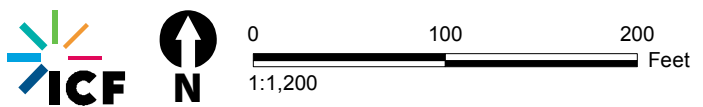


\\PDC\ITRDS\GIS\Projects\_1\RTI\_Solutions\00718\_17\_Manchester\Figures\Doc\BA\Fig\_X\_Landcover.mxd User: 19016 Date: 2/13/2019



- Legend**
- Notes**
- Biological Study Area
  - Area Without Access
  - Cable Landing Parcel  
APN 132-170-11
  - Cable Landing Stations (CLS)
- Land Cover**
- Closed-Cone Pine-Cypress
  - Coastal Scrub
  - Urban
  - Nonnative Annual Grassland
  - Perennial Grassland
  - Riverine\*
  - Valley Foothill Riparian
  - Wet Meadow\*

\*Includes potential USACE and CCC jurisdictional features



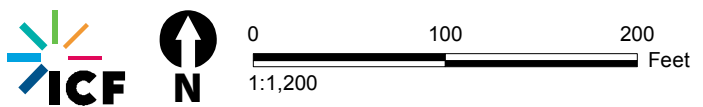


\\PDC\IT\RD\GIS\Projects\_1\RTI\_Solutions\00718\_17\_Manchester\Figures\Doc\BA\Fig\_X\_Landcover.mxd User: 19016 Date: 2/13/2019



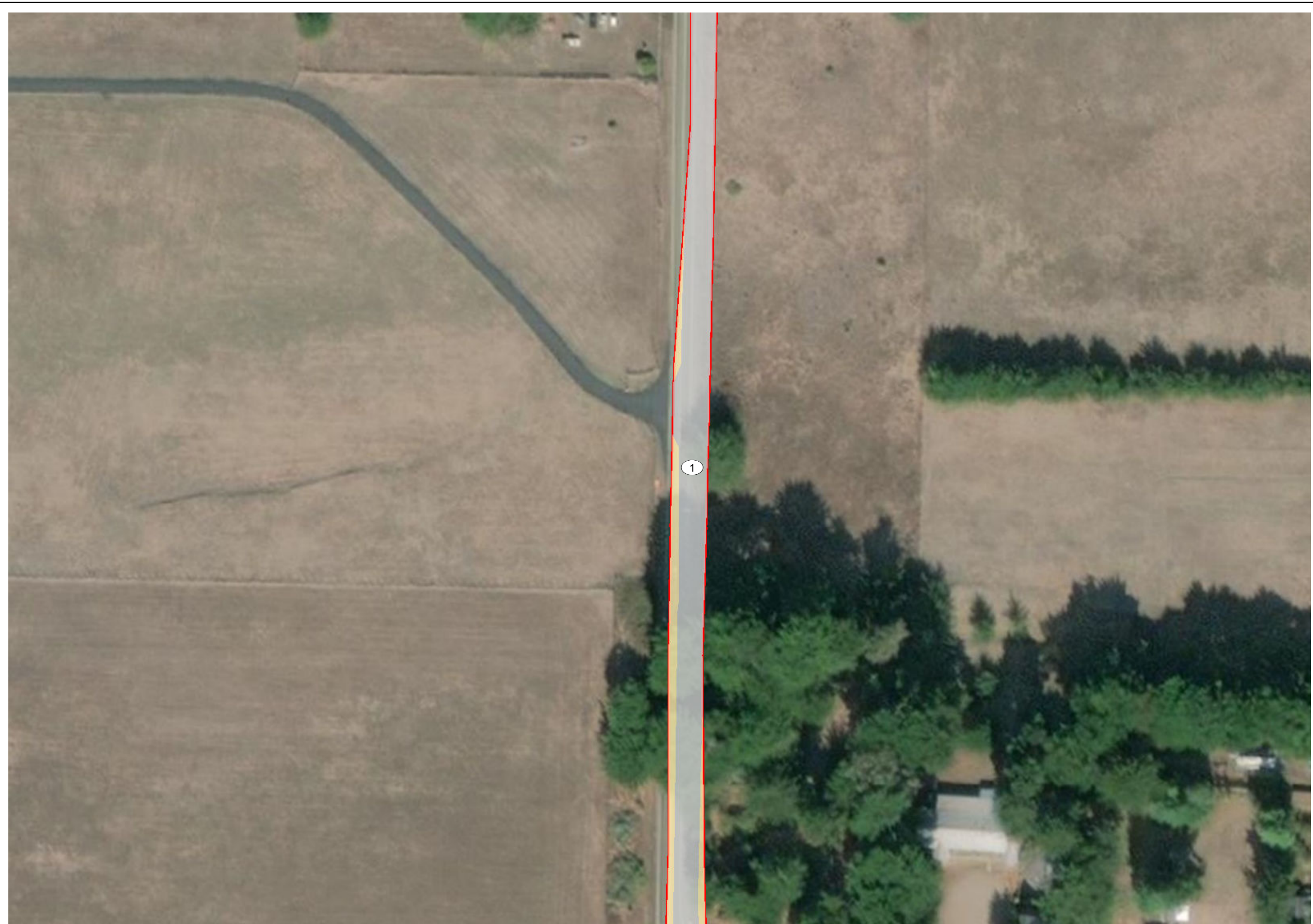
- Legend**
- Notes**
- Biological Study Area
  - Area Without Access
  - Cable Landing Parcel APN 132-170-11
  - Cable Landing Stations (CLS)
- Land Cover**
- Closed-Cone Pine-Cypress
  - Coastal Scrub
  - Urban
  - Nonnative Annual Grassland
  - Perennial Grassland
  - Riverine\*
  - Valley Foothill Riparian
  - Wet Meadow\*

\*Includes potential USACE and CCC jurisdictional features



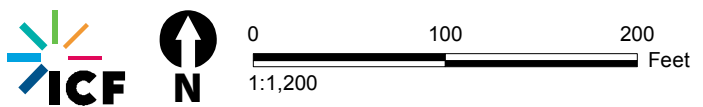


\\PDC\ITRDS\GIS\Projects\_1\RTI\_Solutions\00718\_17\_Manchester\Figures\Doc\BA\Fig\_X\_Landcover.mxd User: 19016 Date: 2/13/2019



- Legend**
- Notes**
- Biological Study Area
  - Area Without Access
  - Cable Landing Parcel APN 132-170-11
  - Cable Landing Stations (CLS)
- Land Cover**
- Closed-Cone Pine-Cypress
  - Coastal Scrub
  - Urban
  - Nonnative Annual Grassland
  - Perennial Grassland
  - Riverine\*
  - Valley Foothill Riparian
  - Wet Meadow\*

\*Includes potential USACE and CCC jurisdictional features



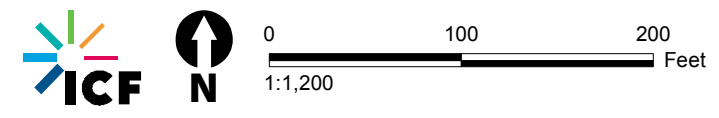


\\PDC\ITRDSGIS\Projects\_1\RTI\_Solutions\00718\_17\_Manchester\Figures\Doc\BA\Fig\_X\_Landcover.mxd User: 19016 Date: 2/13/2019



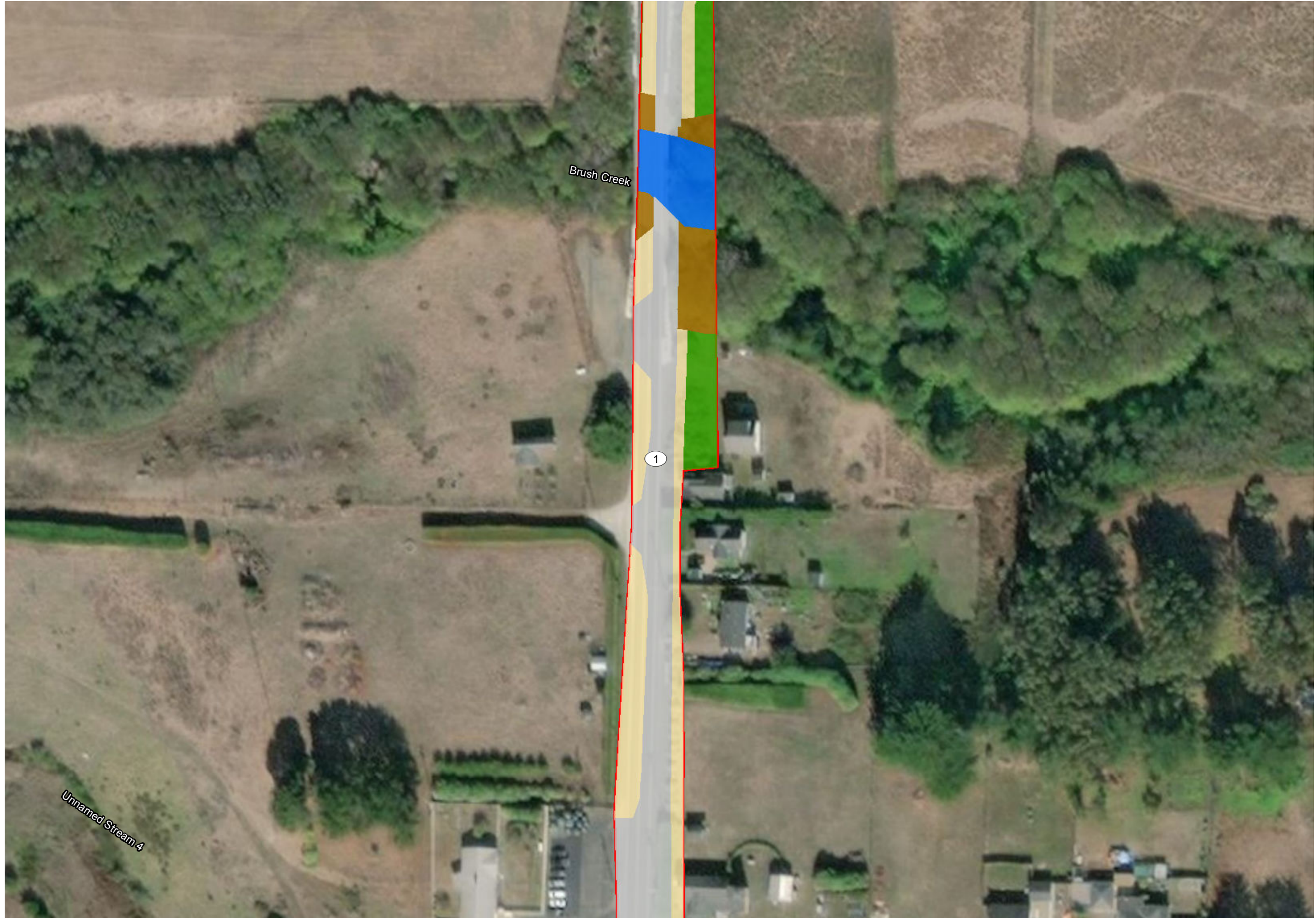
- Legend**
- Notes**
- Biological Study Area
  - Area Without Access
  - Cable Landing Parcel APN 132-170-11
  - Cable Landing Stations (CLS)
- Land Cover**
- Closed-Cone Pine-Cypress
  - Coastal Scrub
  - Urban
  - Nonnative Annual Grassland
  - Perennial Grassland
  - Riverine\*
  - Valley Foothill Riparian
  - Wet Meadow\*

\*Includes potential USACE and CCC jurisdictional features



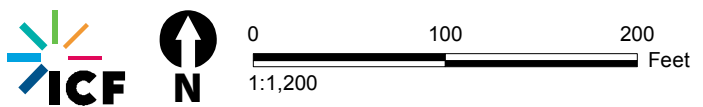


\\PDC\ITRDSGIS\Projects\_1\RTI\_Solutions\00718\_17\_Manchester\Figures\Doc\BA\Fig\_X\_Landcover.mxd User: 19016 Date: 2/13/2019



- Legend**
- Notes**
- Biological Study Area
  - Area Without Access
  - Cable Landing Parcel APN 132-170-11
  - Cable Landing Stations (CLS)
- Land Cover**
- Closed-Cone Pine-Cypress
  - Coastal Scrub
  - Urban
  - Nonnative Annual Grassland
  - Perennial Grassland
  - Riverine\*
  - Valley Foothill Riparian
  - Wet Meadow\*

\*Includes potential USACE and CCC jurisdictional features



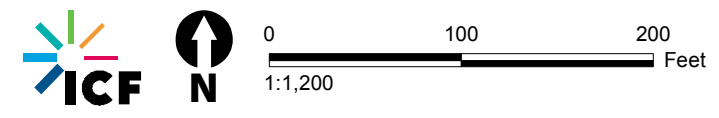


\\PDC\IT\RD\GIS\Projects\_1\RTI\_Solutions\0718\_17\_Manchester\Figures\DocBA\Fig\_X\_Landcover.mxd User: 19016 Date: 2/13/2019



- Legend**
- Notes**
- Biological Study Area
  - Area Without Access
  - Cable Landing Parcel APN 132-170-11
  - Cable Landing Stations (CLS)
- Land Cover**
- Closed-Cone Pine-Cypress
  - Coastal Scrub
  - Urban
  - Nonnative Annual Grassland
  - Perennial Grassland
  - Riverine\*
  - Valley Foothill Riparian
  - Wet Meadow\*

\*Includes potential USACE and CCC jurisdictional features





\\PDC\ITRDS\GIS\Projects\_1\RTI\_Solutions\00718\_17\_Manchester\Figures\DocBA\Fig\_X\_Landcover.mxd User: 19016 Date: 2/13/2019



- Legend**
- Notes**
- Biological Study Area
  - Area Without Access
  - Cable Landing Parcel APN 132-170-11
  - Cable Landing Stations (CLS)
- Land Cover**
- Closed-Cone Pine-Cypress
  - Coastal Scrub
  - Urban
  - Nonnative Annual Grassland
  - Perennial Grassland
  - Riverine\*
  - Valley Foothill Riparian
  - Wet Meadow\*

\*Includes potential USACE and CCC jurisdictional features

