

SHELL LA MOTEMS

AECOM Imagine it.
Delivered.



HEIDI GOEBEL
VP, DIRECTOR ENGINEERING, OPERATIONS AND
MAINTENANCE,
AECOM PM LA MOTEMS PROJECT
Prevention First 2018 Symposium September 25, 2018

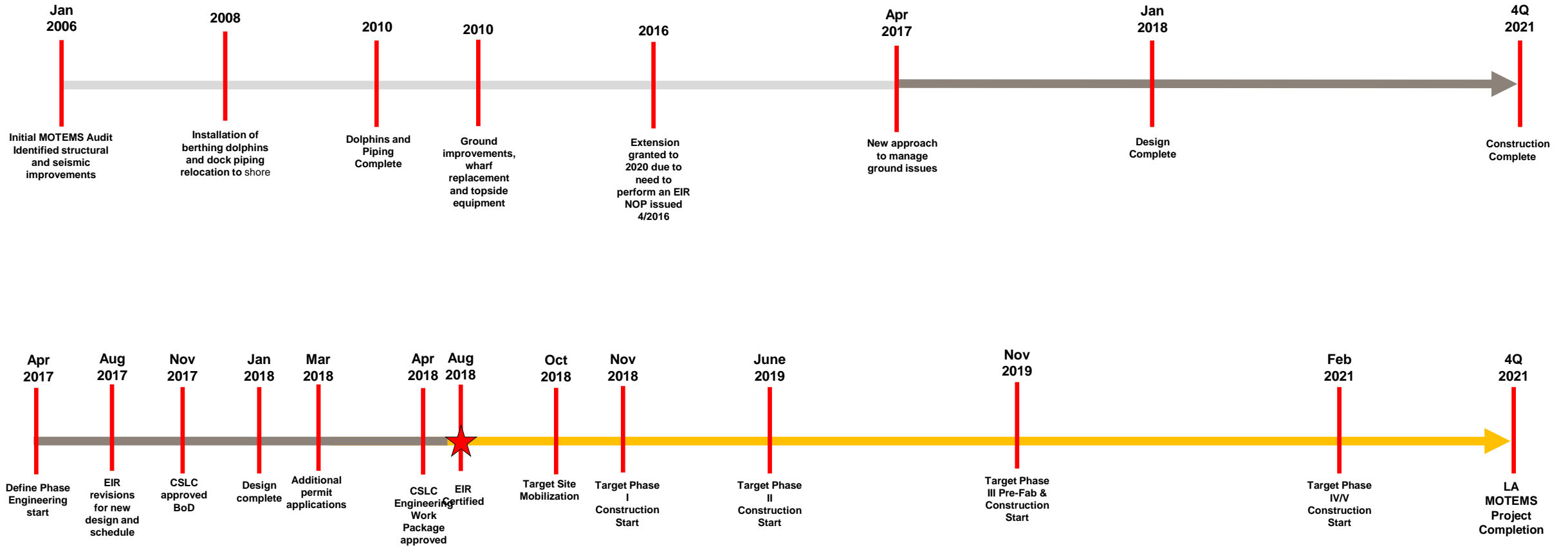
Shell LA MOTEMS Presentation Sequence

- Shell Mormon Island Tour
- MOTEMS Timeline
- Project Challenges
- Phased Project Execution
- Model Snap Shot

SHELL MORMON ISLAND TERMINAL



Shell Morman Island MOTEMS Project Timeline

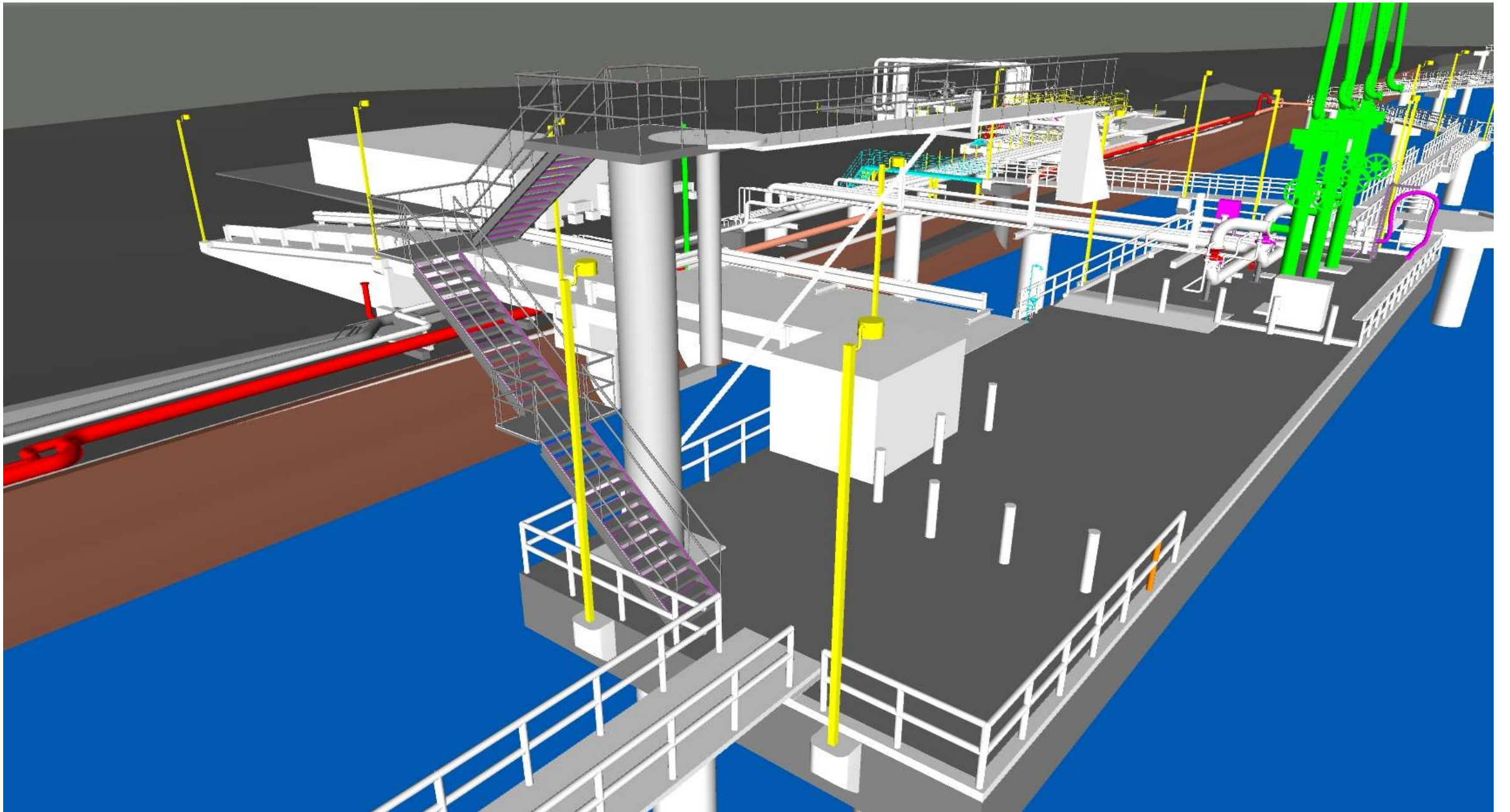


Project Challenges

- Future Uncertainty
- Significant Capital Investment
- Lack of benchmarks for these types of projects in the LA Basin
- Onerous CEQA process
- Design Parameters
 - Meeting the seismic stability
 - Fit for purpose design scope
 - Vessel Fleet turnover and wharf/mooring/berthing design
 - Phased construction –Shell and POLA executing separate projects and the need for continued operation during construction

Facilities to be Installed

- Jetty Platform- Concrete deck with steel piles
- 2 new mooring dolphins, revisions to a 3rd
- Catwalks for mooring access and jetty egress
- Marine Loading Arms
- Gangway Tower
- Dock House
- Product piping and a new shore side manifold supported on piles
- Dock Safety Unit (DSU) and vapor piping
- Utilities (firewater, power, plant air, potable water, oily water, propane)



THANK YOU

AECOM Imagine it.
Delivered.