

**STAFF REPORT  
C72**

A 26  
S 8

06/21/18  
PRC 2976.1  
D. Simpkin

**REVISION OF RENT**

**LESSEE:**

U.S. Borax, Inc.

**AREA, LAND TYPE, AND LOCATION:**

Sovereign land located on the dry lakebed of Owens Lake, Inyo County.

**AUTHORIZED USE:**

Continued use and maintenance of a mineral processing site, water wells, access road, solar evaporation ponds, and an electrical transmission facility.

**LEASE TERM:**

20 years, beginning August 1, 2008.

**CONSIDERATION:**

This lease provides that the Commission may modify the rent periodically during the lease term. Pursuant to this provision, staff conducted a review of the rent under this lease and recommends that rent be revised from \$2,606 per year to \$2,952 per year, effective August 1, 2018.

**OTHER PERTINENT INFORMATION:**

1. On December 17, 2009, the Commission authorized a 20-year, General Lease – Industrial Use to U.S. Borax, Inc., for the continued use and maintenance of a mineral processing site, water wells, access road, solar evaporation ponds, and an electrical transmission facility ([Item C30, December 17, 2009](#)). The lease will expire on July 31, 2028.
2. This action is consistent with Strategy 2.2 of the Commission's Strategic Plan to ensure timely receipt of revenues and royalties from the use and development of State lands and minerals.
3. Approving the revision of rent is not a project as defined by the California Environmental Quality Act because it is an administrative action that will not result in direct or indirect physical changes in the environment.

STAFF REPORT NO. **C72** (CONT'D)

Authority: Public Resources Code section 21065 and California Code of Regulations, title 14, section 15378, subdivision (b)(5).

**EXHIBIT:**

- A. Site and Location Map

**RECOMMENDED ACTION:**

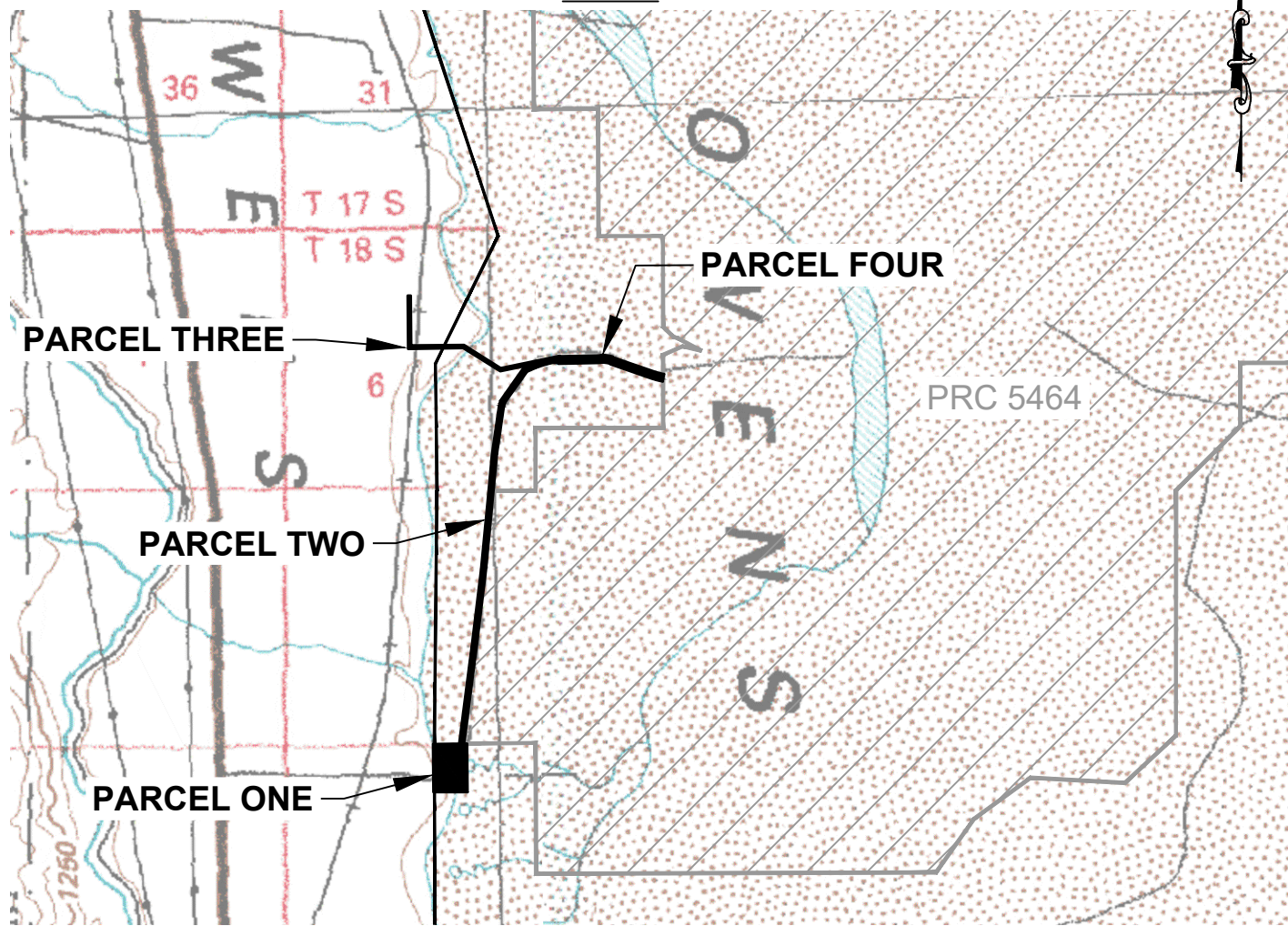
It is recommended that the Commission:

**AUTHORIZATION:**

Approve the revision of rent for Lease No. PRC 2976.1 from \$2,606 per year to \$2,952 per year, effective August 1, 2018.

NO SCALE

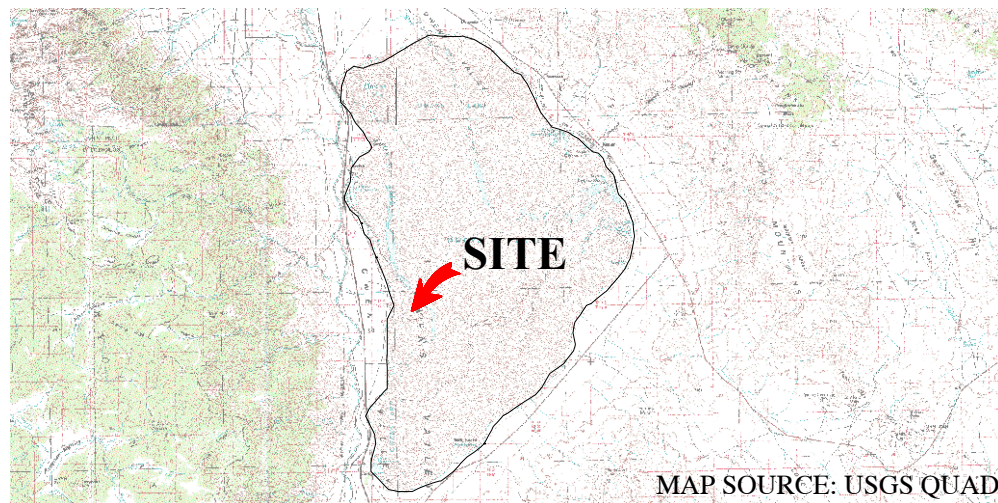
### SITE



MAINTENANCE OF A ROADWAY, ELECTRICAL TRANSMISSION FACILITY, MINERAL PROCESSING SITE, WATER WELLS & SOLAR EVAPORATING PONDS

NO SCALE

### LOCATION



MAP SOURCE: USGS QUAD

### **Exhibit A**

PRC 2976.1  
U.S. BORAX INC.  
GENERAL LEASE -  
INDUSTRIAL USE  
OWENS LAKE  
INYO COUNTY



JAK 4/18

This Exhibit is solely for purposes of generally defining the lease premises, is based on unverified information provided by the Lessee or other parties and is not intended to be, nor shall it be construed as, a waiver or limitation of any State interest in the subject or any other property.