

**STAFF REPORT
C08**

A 3
S 4

06/21/18
PRC 9013.9
S. Avila

AMENDMENT OF LEASE

LESSEE:

City of Red Bluff

AREA, LAND TYPE, AND LOCATION:

0.06 acre, more or less, of sovereign land in the Sacramento River, adjacent to 98 Main Street, city of Red Bluff, Tehama County.

AUTHORIZED USE:

Construction, use, and maintenance of a boat launch ramp, an elevated rock-filled gabion walkway, and riprap.

LEASE TERM:

20 years, beginning October 19, 2012.

CONSIDERATION:

The public use and benefit; with the State reserving the right at any time to set a monetary rent if the Commission finds such action to be in the State's best interests.

PROPOSED AMENDMENT:

Amend the lease to allow expansion of the existing boat launch facilities at Red Bluff River Park, 98 Main Street, including:

1. Installation of riprap around the new boat launch ramp subgrade area.
2. Construction of a new two-lane boat launch ramp.
3. Installation and placement of two boarding floats, gangway, and guide cable with anchor.
4. Conversion of an existing elevated rock-filled gabion walkway, and single-lane boat launch ramp into a nonmotorized boat launch ramp.

STAFF REPORT NO. **C08** (CONT'D)

5. Amend the lease to replace the existing Exhibit A, Land Description, and Exhibit B, Site and Location Map, with the attached Exhibit A, Land Description, and Exhibit B, Site and Location Map (for reference purposes only).

All other terms and conditions of the lease shall remain in effect without amendment.

STAFF ANALYSIS AND RECOMMENDATION:

Authority:

Public Resources Code sections 6005, 6216, 6301, 6501.1, and 6503; California Code of Regulations, title 2, sections 2000 and 2003.

Public Trust and State's Best Interests Analysis:

On October 19, 2012, the Commission authorized a General Lease – Public Agency Use to the City of Red Bluff (City) for the construction, use, and maintenance of a boat launch ramp, an elevated rock-filled gabion walkway, and riprap ([Item C33, October 19, 2012](#)). That lease will expire on October 18, 2032. The proposed amendment would allow the City to construct a two-lane boat launch ramp, two boarding floats, a gangway, a guide cable with anchor, and riprap; and to convert the existing elevated rock-filled gabion walkway, and single-lane boat launch ramp into a nonmotorized boat launch ramp. This boat launch facility is maintained and operated by the City and is located within Red Bluff River Park. The uplands include boat trailer parking and vehicle parking spaces, picnic facilities, barbeque pits, and many other recreational amenities. Construction of the additional amenities will promote and re-establish boating access for the public and restore park usage to levels enjoyed prior to the 2011 decommissioning of the Red Bluff Diversion Dam.

The addition of the subject improvements is part of a larger project to enhance and improve accessibility for all visitors to the park. Many of the proposed improvements will increase or facilitate public access to sovereign land. The project will include Americans with Disabilities Act (ADA) accessibility features, and security lighting for the boat ramp and parking lot will be installed. These design elements will help promote fishing, kayaking, canoeing, waterskiing, and wakeboarding. The City, as lead agency under the California Environmental Quality Act (CEQA), conducted an environmental analysis for the project and adopted a Mitigated Negative Declaration (MND).

The MND evaluated several impacts on sovereign land and mitigation measures have been incorporated into the project. The potential impacts

STAFF REPORT NO. C08 (CONT'D)

include the disturbance of salmonids, green sturgeon, western pond turtle, and killdeer; sedimentation; degradation of air and water quality during construction; and construction noise. The MND includes mitigation measures to address these potential impacts to a less than significant level and the City adopted a Mitigation Monitoring Program pursuant to CEQA. Commission staff reviewed the City's MMP and included those measures applicable to the proposed lease area in the MMP recommended for Commission adoption (see Exhibit C). As a result, it is not anticipated that the Public Trust resources and values related to fisheries and wildlife habitat will be substantially impaired.

The Red Bluff River Park boat launch facility has been instrumental for accommodating public access for water-oriented activities. It is one of the few facilities in the area that allows access to the river for the boating public. Since its construction, the facility has seen a steady increase in usage of recreational boating by the public. The proposed project is consistent with the common law Public Trust Doctrine because the improved facilities will promote and enhance public water-dependent recreation, navigation, and water-related safety services by first responders.

Climate Change Analysis:

The project area is not tidally influenced and therefore, would not be subject to sea-level rise. However, as stated in *Safeguarding California* (California Natural Resources Agency 2014), climate change is projected to increase the frequency and severity of natural disasters related to flooding, drought, and storms. In rivers, more frequent and powerful storms can result in increased flooding conditions and damage from storm-created debris. Conversely, prolonged droughts could dramatically reduce river flow and water levels, leading to loss of public access and navigability currently experienced on this site needing to construct a new ramp. Climate change will further influence riverine areas by changing erosion and sedimentation rates, and flooding and storm flow, as well as runoff, will likely increase scour, decreasing bank stability at a faster rate.

Due to these potential changes, the anchors to hold the paved access, ADA parking, and anchors holding the boarding floats could need reinforcement in the future to withstand higher levels of flood exposure and more frequent storm events. The boarding floats adjacent to the two-lane ramp will be adaptable to variable water levels, allowing the ramp to rise and fall with storms and droughts and increasing its resiliency to some climate change impacts, but may require more frequent maintenance or

STAFF REPORT NO. **C08** (CONT'D)

replacement to ensure continued function during and after storm seasons or to avoid dislodgement.

Regular maintenance, as required by the lease, will reduce the likelihood of severe structural degradation or dislodgement. Pursuant to the proposed lease, the Applicant acknowledges that the lease premises are located in an area that may be subject to effects of climate change.

Conclusion:

For all the reasons above, staff believes the authorization of this amendment is consistent with the common law Public Trust Doctrine and in the best interests of the State.

OTHER PERTINENT INFORMATION:

1. This action is consistent with Strategy 1.1 of the Commission's Strategic Plan to deliver the highest levels of public health and safety in the protection, preservation, and responsible economic use of the lands and resources under the Commission's jurisdiction; and Strategy 1.3 to protect, expand, and enhance appropriate public use and access to and along the State's inland and coastal waterways.
2. A Mitigated Negative Declaration, State Clearinghouse No. 2014072008, was prepared by the City of Red Bluff and approved on August 14, 2014, for this project. Commission staff has reviewed such document.

A Mitigation Monitoring Program was adopted by the City of Red Bluff.
3. This activity involves lands identified as possessing significant environmental values pursuant to Public Resources Code section 6370 et seq., but such activity will not affect those significant lands. Based upon staff's consultation with the persons nominating such lands and through the CEQA review process, it is staff's opinion that the project, as proposed, is consistent with its use classification.

APPROVALS OBTAINED:

City of Red Bluff

FURTHER APPROVALS REQUIRED:

U.S. Army Corps of Engineers
Central Valley Regional Water Quality Control Board
California Department of Fish and Wildlife

STAFF REPORT NO. **C08** (CONT'D)

EXHIBITS:

- A. Land Description
- B. Site and Location Map
- C. Mitigation Monitoring Program

RECOMMENDED ACTION:

It is recommended that the Commission:

CEQA FINDING:

Find that a Mitigated Negative Declaration, State Clearinghouse No. 2014072008, and a Mitigation Monitoring Program were prepared by the City of Red Bluff and adopted on August 14, 2014, for this project and that the Commission reviewed and considered the information contained therein; find that in its independent judgment, none of the events specified in Public Resources Code section 21166 or State CEQA Guidelines section 15162 resulting in any new or substantially more severe significant impacts has occurred, and therefore, no additional CEQA analysis is required.

Adopt the Mitigation Monitoring Program, as contained in Exhibit C, attached hereto.

PUBLIC TRUST AND STATE'S BEST INTERESTS:

Find that the proposed amendment will not substantially interfere with the Public Trust needs and values at this location, at this time, and for the foreseeable term of the lease; is consistent with the common law Public Trust Doctrine; and is in the best interests of the State.

AUTHORIZATION:

Authorize the amendment of Lease No. PRC 9013.9, a General Lease – Public Agency Use, effective June 21, 2018; to include the construction of a new two-lane boat launch ramp, two boarding floats, a gangway, a guide cable with anchor, and riprap; and conversion of an existing elevated rock-filled gabion walkway and single-lane boat launch ramp into a nonmotorized boat launch ramp; and to replace the existing Exhibit A, Land Description, and Exhibit B, Site and Location Map, with the attached Exhibit A, Land Description, and Exhibit B, Site and Location Map (for reference purposes only).

EXHIBIT A

PRC 9013.9

LAND DESCRIPTION

A parcel of submerged lands, in the bed of the Sacramento River, and lying adjacent to Lot 5, Section 20, Township 27 North, Range 3 West, MDM, as shown on the Official Township Plat approved December 18th, 1868, County of Tehama, State of California, and more particularly described as follows:

All those lands lying underlying a 2-lane boat launch, gangway, two (2) boarding floats, anchor, non-motorized boat launch, elevated walkway (rock-filled gabion) and rip-rap adjacent to that "PARCEL ONE" of that Land Purchase Contract made the 30th of March, 1965 between the United States of America and the City of Red Bluff, Contract No. 14-06-200-2296 on file with the California State Lands Commission.

EXCEPTING THEREFROM any portion lying landward of low water of said river.

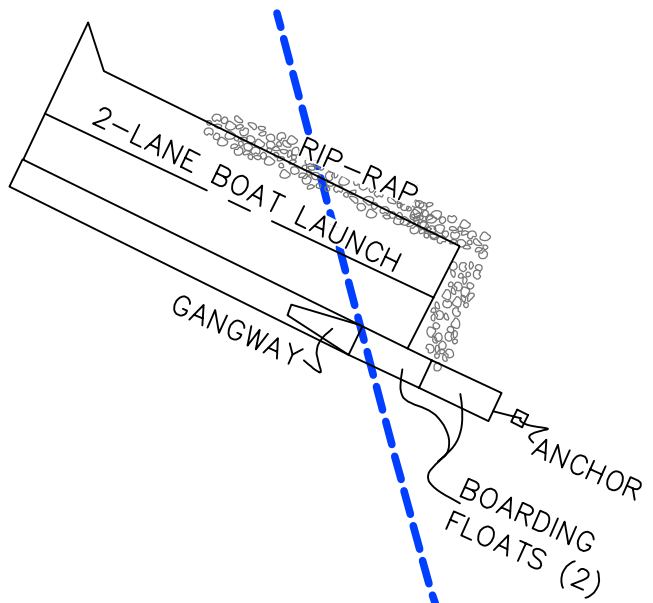
This description is based on Applicant provided design plans, by Stoll Engineering dated March 15th, 2017, "RED BLUFF RIVER FRONT PARK OVERALL SITE PLAN", to be built at a later date within the Lease time frame. This description is to be updated once final as-built plans are submitted.

Accompanying plat is hereby made a part of this description.

END OF DESCRIPTION

PREPARED 3/06/18 BY THE CALIFORNIA STATE LANDS COMMISSION BOUNDARY UNIT





SACRAMENTO RIVER

APPROX. SHORELINE

APN 033-100-16

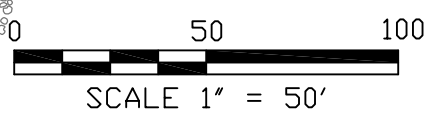
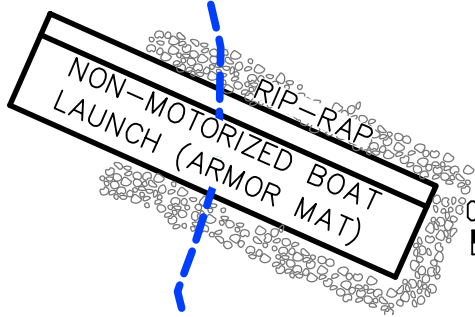


EXHIBIT A

Page 2 of 2

MJF 3/06/18

LAND DESCRIPTION PLAT
W 26591, CITY OF RED BLUFF
TEHAMA COUNTY

CALIFORNIA STATE
LANDS COMMISSION

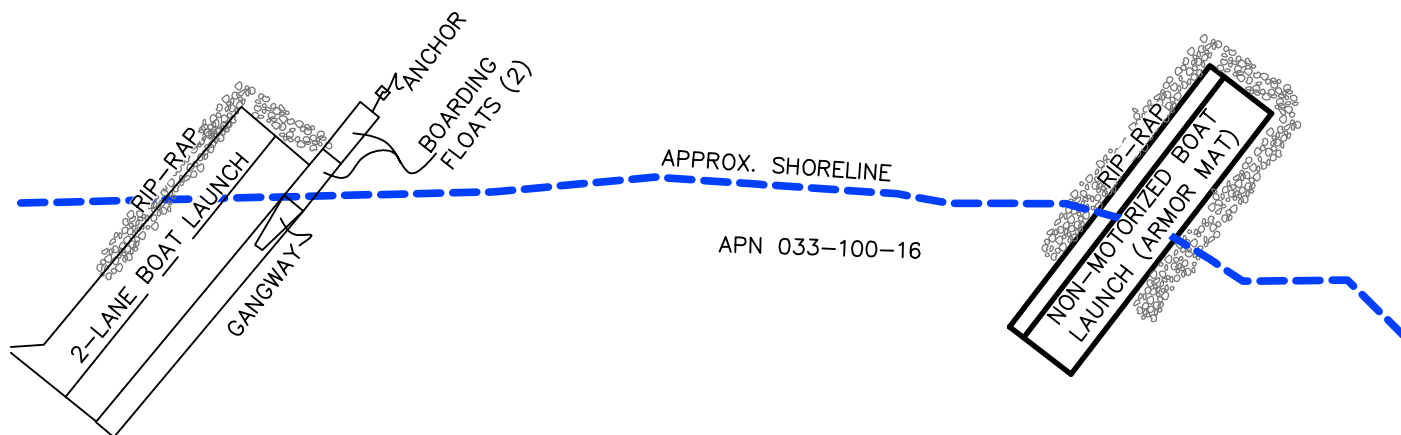


NO SCALE

SITE



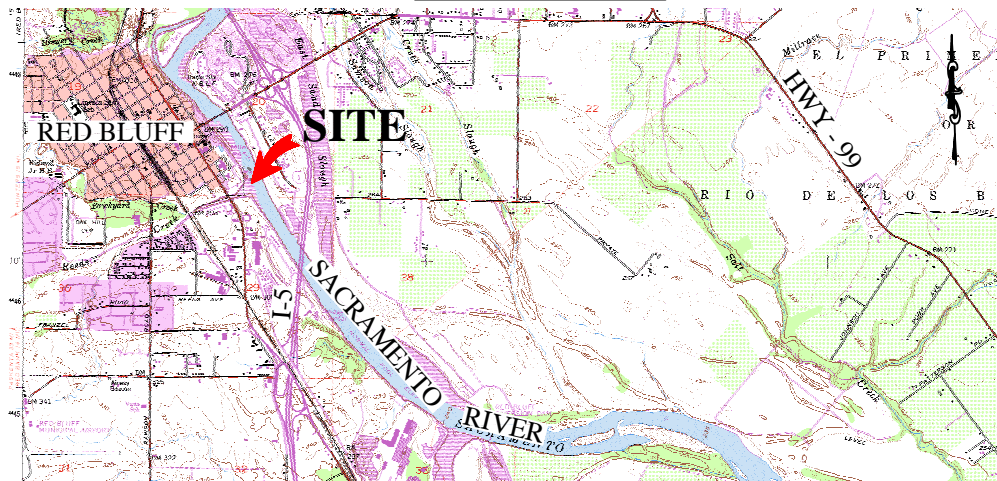
SACRAMENTO RIVER



Sacramento River, Red Bluff

NO SCALE

LOCATION



MAP SOURCE: USGS QUAD

Exhibit B

PRC 9013.9
 CITY OF RED BLUFF
 APN 033-100-16
 GENERAL LEASE -
 PUBLIC AGENCY USE
 TEHAMA COUNTY



MJF 3/06/18

This Exhibit is solely for purposes of generally defining the lease premises, is based on unverified information provided by the Lessee or other parties and is not intended to be, nor shall it be construed as, a waiver or limitation of any State interest in the subject or any other property.

EXHIBIT C
CALIFORNIA STATE LANDS COMMISSION
MITIGATION MONITORING PROGRAM
RED BLUFF RIVERFRONT PARK BOAT LAUNCHING FACILITY
(PRC 9013.9, State Clearinghouse No. 2014072008)

The California State Lands Commission (Commission) is a responsible agency under the California Environmental Quality Act (CEQA) for the Red Bluff Riverfront Park Boat Launching Facility (Project). The CEQA lead agency for the Project is City of Red Bluff (City).

In conjunction with approval of this Project, the Commission adopts this Mitigation Monitoring Program (MMP) for the implementation of mitigation measures for the portion(s) of the Project located on Commission lands. The purpose of a MMP is to impose feasible measures to avoid or substantially reduce the significant environmental impacts from a project identified in an Environmental Impact Report (EIR) or a Mitigated Negative Declaration (MND). State CEQA Guidelines section 15097, subdivision (a), states in part:¹

In order to ensure that the mitigation measures and project revisions identified in the EIR or negative declaration are implemented, the public agency shall adopt a program for monitoring or reporting on the revisions which it has required in the project and the measures it has imposed to mitigate or avoid significant environmental effects. A public agency may delegate reporting or monitoring responsibilities to another public agency or to a private entity which accepts the delegation; however, until mitigation measures have been completed the lead agency remains responsible for ensuring that implementation of the mitigation measures occurs in accordance with the program.

The lead agency has adopted an MND, State Clearinghouse No 2014072008, has adopted a MMP for the whole of the Project (see Exhibit C, Attachment C-1), and remains responsible for ensuring that implementation of the mitigation measures occurs in accordance with its program. The Commission's action and authority as a responsible agency apply only to the mitigation measures listed in Table C-1 below. The full text of each mitigation measure, as set forth in the MMP prepared by the CEQA lead agency and listed in Table C-1, is incorporated by reference in this Exhibit C.

¹ The State CEQA Guidelines are found at California Code of Regulations, title 14, section 15000 et seq.

Table C-1. Project Impacts and Applicable Mitigation Measures

Potential Impact	Mitigation Measure (MM)²
Impact Air Quality (c). Criteria Pollutant	AQ MM 1. Fugitive Dust
	AQ MM 2. Speed Control
	AQ MM 3. Equipment Idling
	AQ MM 4. Low Sulfur Diesel Fuel
	AQ MM 5. Off-Road Construction Equipment Engines
	AQ MM 6. Ground Cover
	AQ MM 7. Tehama County's Standard Mitigation
Impact Biological Resources (a). Special Status Species	BR MM 1. Anadromous Fish Species
	BR MM 2. Nesting Birds
	BR MM 3. Western Pond Turtles
Impact Biological Resources (b). Sensitive Habitats	BR MM 4. Shaded Riverine Aquatic Habitat
Impact Biological Resources (c). Wetlands	BR MM 5. Jurisdictional Wetlands and Waters
Impact Cultural Resources (b). Archaeological Resources	CR MM 1. Historic or Cultural Resources Discoveries
Impact Cultural Resources (d). Human Remains	See CR MM 1 above
Impact Geology and Soils (b). Soil Erosion	See HWQ MM 1 through 5 below
Impact Hydrology and Water Quality (a). Water Quality Standards	HWQ MM 1. No Equipment in Water
	HWQ MM 2. Silt Curtains
	HWQ MM 3. In-Water Construction Period
	HWQ MM 4. Import Clean Washed Gravel
	HWQ MM 5. Erosion and Sedimentation Control
Impact Hydrology and Water Quality (f). Degrade Water Quality	HWQ MM 6. Barriers, Parking Ordinance, an Signage
Impact Recreational Resources (b). Construction or Expansion Effects	REC MM 1. Post Construction Signs

² See Attachment C-1 for the full text of each MM taken from the MMP prepared by the CEQA lead agency.

ATTACHMENT C-1

**Mitigation Monitoring Program Adopted by the
City of Red Bluff**

Commission Attachment C-1

APPENDIX B SUMMARY OF MITIGATION MONITORING REQUIREMENTS

Mitigation Measure	Timing and Implementation	Responsible Parties (task)	Verification (date and initials)
AIR QUALITY			
Impact: Air Quality (c)	The proposed Project could result in a cumulatively considerable net increase of any criteria pollutant for which the project region is non-attainment under an applicable federal or state ambient air quality standard (including releasing emissions which exceed quantitative thresholds for ozone precursors).		
Mitigation Measures			
AQ MM1: Water shall be applied as needed on the construction site to reduce fugitive dust emissions.	During construction	General contractor City's Environmental Inspector to check for compliance during construction	
AQ MM2: Implement speed control on all exposed construction areas.	During construction	General contractor City's Environmental Inspector to check for compliance during construction	
AQ MM3: Minimize equipment idling and run-time via scheduling of equipment types and use rates.	During construction	General contractor City's Environmental Inspector to check for compliance during construction	
AQ MM4: Enforce use of CARB-certified low-sulfur diesel fuel.	During construction	General contractor City's Environmental Inspector to check for compliance during construction	
AQ MM5: Ensure compliance with all applicable EPA and CARB tiered emissions standards for off-road construction-equipment engines.	During construction	General contractor City's Environmental Inspector to check for compliance during construction	
AQ MM6: Reestablish appropriate ground cover on finished construction areas as soon as project schedule allows.	During construction	General contractor City's Environmental Inspector to check for compliance during construction	
AQ MM7: Incorporate and implement the Tehama County Air Pollution Control District's Standard Mitigation Measures (SMM) for "Level A" impacts into construction contracts.	Prior to construction During construction	General contractor City's Environmental Inspector to check for compliance during construction	
BIOLOGICAL RESOURCES			
Impact: Biological Resources (a)	The proposed Project could have a substantial adverse effect, either directly or through habitat modifications, on any species identified as a candidate, sensitive, or special status species in local or regional plans, policies, or regulations, or by the California Department of Fish and Wildlife or US Fish and Wildlife Service.		

Mitigation Measure	Timing and Implementation	Responsible Parties (task)	Verification (date and initials)
<p>Mitigation Measures</p> <p>BR MM1: Minimization of Impacts to Anadromous Fish Species</p> <ul style="list-style-type: none"> ▪ Project construction will be scheduled when river flow regimes are most predictable, after spring snowmelt and spring storm discharges have declined and prior to onset of winter storms, to minimize potential impacts to fish and riparian habitat. ▪ A borrow pit and associated topographic low area located in the Project area that currently strands juvenile salmonids will be in-filled with native gravel or imported clean washed gravel to eliminate the stranding hazard. ▪ The access route to the boat ramp will be designed so that it does not pool water upstream of the road and risk potential stranding of juvenile salmonids. ▪ Mitigation for impacts to shaded riparian habitat (BR MM4 below) shall be implemented so as to enhance anadromous fish habitat. ▪ In addition, implementation of mitigation measures described in the Geology and Soils and Hydrology and Water Quality subsections of this environmental analysis will protect anadromous fish species from deleterious effects of water quality degradation. 	<p>Prior to construction During construction Post-construction</p>	<p>City, General Contractor City's Environmental Inspector to check for compliance during construction</p>	
<p>BR MM2: Avoidance of Impacts to Nesting Birds</p> <ul style="list-style-type: none"> ▪ The City shall not conduct site preparation or construction activities in the Project area between February 15 and August 31 to avoid impacts to breeding/nesting birds; or two (2) weeks prior to construction or site preparation, the City shall have a qualified biologist conduct preconstruction surveys to determine the presence of breeding/nesting pairs. If Project activities are delayed or suspended for more than 15 days after the pre-construction survey, the site shall be resurveyed. All bird surveys shall be submitted to CDFW prior to implementation of Project activities. ▪ These surveys shall include a general survey within 500 feet of the Project area. If no breeding/nesting birds are observed, site preparation and construction activities may begin. If active nests are found, a minimum 200-foot no-disturbance buffer (500 foot for raptors) shall be maintained around the nest site. No habitat removal or any other work shall occur within the buffer zone as long as the nest continues to be active, meaning until the young have fledged, are no longer being fed by the parents, or have left the nest and will no longer be impacted by the Project. The actual size of the buffer may be modified based on an evaluation by a qualified biologist of the sensitivity of the birds to the level of Project disturbance, and/or the no-disturbance buffer lifted prior to August 31, if it is determined safe to do so by a qualified biologist and approved by CDFW in writing. 	<p>Prior to construction</p>	<p>City</p>	
<p>BR MM3: Avoidance of Impacts to Western Pond Turtles</p> <ul style="list-style-type: none"> ▪ If a western pond turtle is encountered during construction, activities in the vicinity shall cease until appropriate corrective measures have been implemented or it has been determined that the turtle will not be harmed. Any turtles encountered during construction shall be allowed to move away on their own. 	<p>During construction</p>	<p>General contractor City's Environmental Inspector to check for compliance during construction</p>	

Mitigation Measure	Timing and Implementation	Responsible Parties (task)	Verification (date and initials)
<ul style="list-style-type: none"> Any trapped, injured, or killed turtles shall be reported immediately to the California Department of Fish and Wildlife (CDFW). 			
<p>Impact: Biological Resources (b)</p>	<p>The proposed Project could have a substantial adverse effect on any riparian habitat or other sensitive natural community identified in local or regional plans, policies, regulations, or by the California Department of Fish and Wildlife or US Fish and Wildlife Service.</p>		
<p>Mitigation Measures</p> <p>BR MM4: Minimization of Impacts on SRA Habitat</p> <ul style="list-style-type: none"> Any established trees removed for construction will be replaced at a 3:1 ratio. These will be placed on or near the Sacramento River or Reed's Creek. Construction fencing shall be erected along the outer edges of the construction zone where needed to prevent accidental entry into SRA habitat. Mature native trees located near construction areas shall be flagged and avoided during construction. Impacts to herbaceous cover will be offset by reseeding any unvegetated and impacted areas with a suitable seed mixture post construction. Onsite creation/restoration shall occur in areas disturbed during Project construction and the amount of habitat created/restored shall be at least three times greater than the amount lost due to Project implementation (3:1 ratio, new plantings per large woody riparian plant destroyed). These replanting ratios will help ensure successful establishment of at least one vigorous plant for each plant removed to accommodate the Project. 	<p>Prior to construction During construction Post-construction</p>	<p>General contractor, City City's Environmental Inspector to check for compliance during construction</p>	
<p>Impact: Biological Resources (c)</p>	<p>Construction of the proposed Project could have a substantial adverse effect on federally protected wetlands as defined by Section 404 of the Clean Water Act through direct removal, filling, hydrological interruption, or other means.</p>		
<p>Mitigation Measures</p> <p>BR MM5: Minimization of Impacts to Jurisdictional Wetlands and Waters</p> <ul style="list-style-type: none"> Riparian wetlands shall be created/restored within the Project Area in concert with the creation/restoration of SRA habitat described above in BR MM4. Final mitigation ratios will be determined by application of USACE's "Standard Operating Procedure for Determining Mitigation Ratios." Based on other recent projects with impact to the Sacramento River, it is expected that credit for creation of jurisdictional wetlands and waters will be afforded at an approximately 2:1 ratio (e.g., 2 acres of creation for every acre of loss), and credit for enhancement of existing habitat will be afforded at an approximately 4:1 ratio. Riverine habitat shall be enhanced by adding gravel to the downstream portion of the gravel bar, as described above in BR MM4. 	<p>Post-construction</p>	<p>City</p>	
<p>CULTURAL RESOURCES</p>			
<p>Impact: Cultural Resources (b)</p>	<p>The proposed Project could cause a substantial adverse change in the significance of an archaeological resource pursuant to 15064.5.</p>		

Mitigation Measure	Timing and Implementation	Responsible Parties (task)	Verification (date and initials)
Mitigation Measures			
<p>CR MM1: If any archaeological discoveries (human skeletal remains, culturally modified lithic materials, structural features, or historic artifacts) are encountered during ground disturbing activities, all such activities shall halt within a 100-foot radius of the discovery, and a qualified archaeologist shall be contacted to determine the nature of the find, evaluate its significance, and, if necessary, develop preservation or mitigation measures.</p> <p>Title to all abandoned shipwrecks, archaeological sites, and historic or cultural resources on submerged lands of California is under the jurisdiction of CSLC. The City shall consult with CSLC should any cultural resources on state lands be discovered during construction of the proposed Project.</p>	During construction	City and Environmental Inspector Environmental Inspector to prepare accidental discovery plan and conduct pre-construction tailgate training session and implement plan in the event of an accidental discovery.	
Impact: Cultural Resources (d)	The proposed Project could disturb any human remains, including those interred outside of formal cemeteries.		
<p>Mitigation Measures</p> <p>Implement CR MM1 above.</p>	During construction	City and Environmental Inspector Environmental Inspector to prepare accidental discovery plan and conduct pre-construction tailgate training session and implement plan in the event of an accidental discovery.	
GEOLOGY AND SOILS			
Impact: Geology and Soils (b)	The proposed Project could in substantial soil erosion or the loss of topsoil.		
<p>Mitigation Measures</p> <p>Implement HWQ MM1-5 under Hydrology and Water Quality below.</p>	See HWQ MM1-5	See HWQ MM1-5	
HYDROLOGY AND WATER QUALITY			
Impact: Hydrology and Water Quality (a)	The proposed Project could violate any water quality standards or waste discharge requirements.		
<p>Mitigation Measures</p> <p>HWQ MM1: No equipment will enter the river; a backhoe or small excavator will be used from the stream bank during construction of the boat ramp facilities.</p>	During construction	General contractor City's Environmental Inspector to check for compliance during construction	
<p>HWQ MM2: Silt curtains for in-water work will be used to minimize downstream migration of suspended sediments</p>	During construction	General contractor City's Environmental Inspector to check for compliance during construction	
<p>HWQ MM3: In-water construction will occur during low winter flows and suspended during major storm events.</p>	During construction	General contractor City's Environmental Inspector to check	

Mitigation Measure	Timing and Implementation	Responsible Parties (task)	Verification (date and initials)
		for compliance during construction	
<p>HWQ MM4: In the event that the need to import gravel is necessary, only clean washed gravel will be used.</p>	During construction	General contractor City's Environmental Inspector to check for compliance during construction	
<p>HWQ MM5: Erosion and Sedimentation Control</p> <ul style="list-style-type: none"> ▪ Type D erosion control measures (i.e., hydroseeding) shall be implemented during construction of the proposed Project in non-riparian upland areas. ▪ Erosion control work shall consist of one application of erosion control materials to embankment slopes, excavation slopes, and other areas within non-riparian uplands designated by the Project engineer. These materials shall consist of fiber, seed, commercial fertilizer, and water. ▪ Activities that increase the erosion potential in the Project area shall be restricted to the relatively dry periods to the maximum extent practicable to minimize the potential for rainfall events to transport sediment to the Sacramento River and other surface water features. If these activities take place during the late fall, winter, or early spring, then temporary erosion and sediment control structures must be in place and operational at the end of each construction day and maintained until permanent erosion control structures are in place. ▪ Areas where wetland and upland vegetation need to be removed shall be identified in advance of ground disturbance and limited to only those areas that have been approved by the City. ▪ Within 10 days of completion of construction, weed-free mulch shall be applied to disturbed areas within 10 days in order to reduce the potential for short-term erosion. Prior to a rain event or when there is a greater than 50 percent possibility of rain forecasted by the National Weather Service during the next 24 hours, weed-free mulch shall be applied to all exposed areas upon completion of the day's activities. Soils shall not be left exposed during the rainy season. ▪ Filter fences and catch basins shall be placed below all construction activities at the edge of the Sacramento River and other surface water features to intercept sediment before it reaches the waterway. These structures shall be installed prior to any clearing or grading activities. ▪ Spoil sites shall be located such that they do not drain directly into a surface water feature, if possible. If a spoil site drains into a surface water feature, catch basins shall be constructed to intercept sediment before it reaches the feature. Spoil sites shall be graded and vegetated to reduce the potential for erosion. ▪ Sediment control measures shall be in place prior to the onset of the rainy season and will be monitored and maintained in good working condition until disturbed areas have been revegetated. 	During construction Following construction	General contractor City's Environmental Inspector to check for compliance during construction	
<p>Impact: Hydrology and Water Quality (f)</p>	The Project could otherwise substantially degrade water quality.		
<p>Mitigation Measures</p>	During construction	General contractor, City	

Mitigation Measure	Timing and Implementation	Responsible Parties (task)	Verification (date and initials)
<p>HWQ MM6: Barriers, Parking Ordinance, and Signage</p> <ul style="list-style-type: none"> ▪ The Project will include a low-profile rip-rap border around the approach road, parking area, turn-around area, and boat ramp. The border will be high enough to define the permissible area for driving without affecting hydrology during inundating flows. ▪ The City will adopt an ordinance banning parking in the vicinity of City-owned boat parks except in designated parking spots. ▪ The Project will include placing appropriate signage informing visitors of the ban on parking outside of designated areas, and designating the two in-channel parking spots as a Disabled Parking Authorized Parking Zone. 	<p>Following construction</p>	<p>City's Environmental Inspector to check for compliance during construction</p>	
RECREATIONAL RESOURCES			
<p>Impact: Recreational Resources (b)</p>	<p>The project includes recreational facilities or requires the construction or expansion of recreational facilities that might have an adverse physical effect on the environment.</p>		
<p>Mitigation Measures</p> <p>REC MM1: The City will post signs beginning no less than 30 days prior to onset of construction in and around the proposed Project area with information regarding the duration of impeded public access to the Sacramento River, including alternate boat ramps and access points to the river.</p>	<p>Prior to construction During construction</p>	<p>City, general contractor City's Environmental Inspector to check for compliance during construction</p>	