

MINUTE ITEM
This Calendar Item No. C18 was approved as
Minute Item No. 18 by the California State Lands
Commission by a vote of 3 to 0 at its
09-13-07 meeting.

CALENDAR ITEM
C18

A 2, 3

09/13/07
PRC 7903.2
B. Badeker

S 1

REVISION OF RENT

LESSEE:

Sierra Pacific Power Company
P.O. Box 10100
Reno, Nevada 89520

AREA, LAND TYPE, AND LOCATION:

105 acres, more or less, of school lands, Lassen and Modoc County.

AUTHORIZED USE:

Continued use and maintenance of a 345,000 volt (345 kV) overhead electric transmission line, as shown on the attached Exhibit A.

LEASE TERM:

49 years, beginning August 21, 1996.

CONSIDERATION:

This lease provides that Lessor may modify the rent periodically during the lease term. Pursuant to this provision, staff has conducted a review of the rent under this lease, and recommends that the rent be revised from \$1,623 per year to \$2,411 per year, effective August 21, 2007.

OTHER PERTINENT INFORMATION:

1. On August 21, 1996, the Commission authorized the issuance of a General Lease – Right of Way Use of school lands in Lassen and Modoc counties (PRC 7903.2) for the installation, operation and maintenance of a 345,000 volt (345 kV) electric transmission line and associated facilities. This overhead power line also crosses the Pit River in Modoc County and is authorized under a separate lease (PRC 7902.1). The rent for the Pit River lease has also been reviewed and is presented in a separate calendar item.

CALENDAR ITEM NO. C18 (CONT'D)

EXHIBIT:

- A. Site and Location Map

RECOMMENDED ACTION:

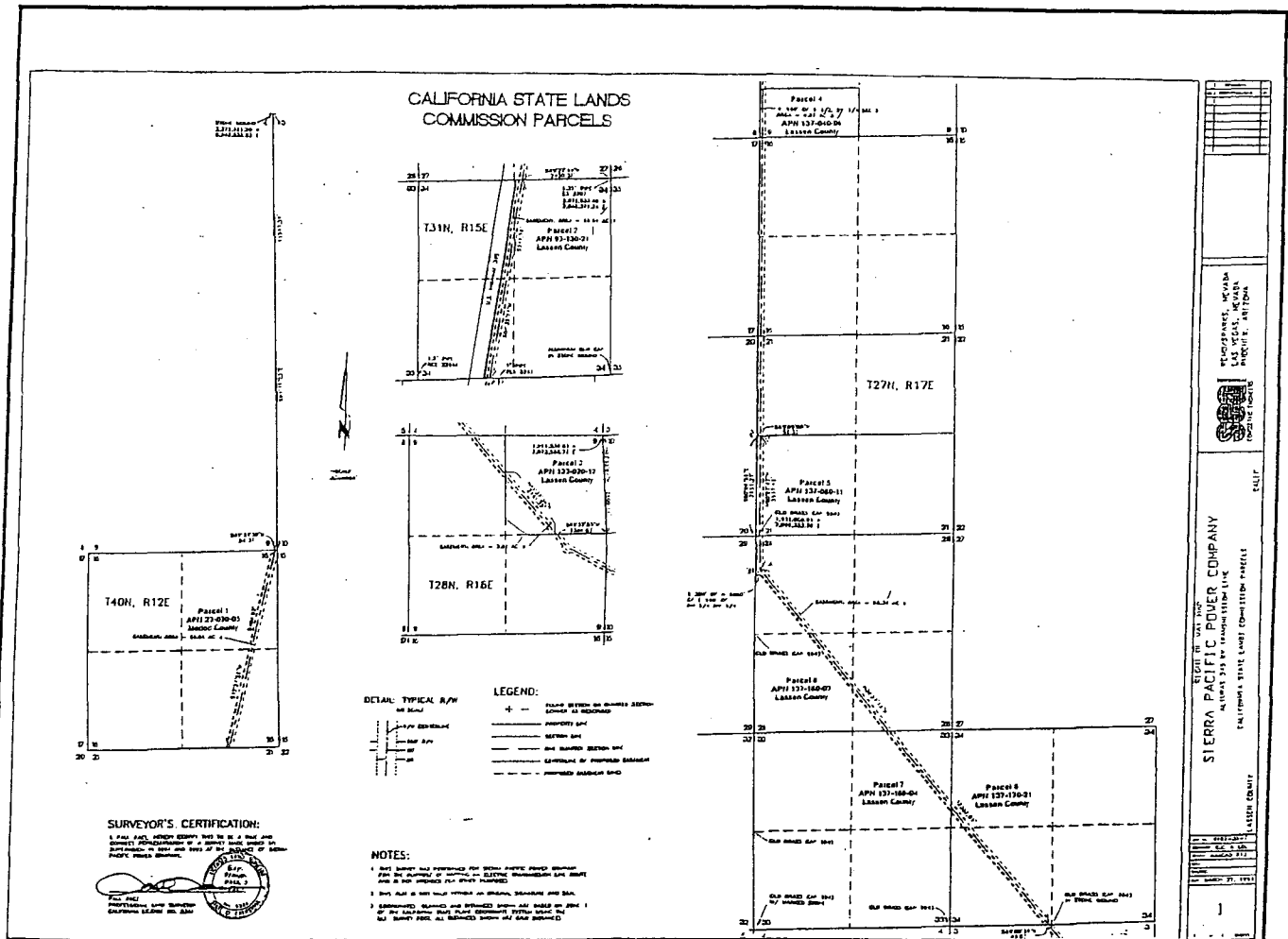
IT IS RECOMMENDED THAT THE COMMISSION:

CEQA FINDING:

FIND THAT THE ACTIVITY IS NOT SUBJECT TO THE REQUIREMENTS OF THE CEQA PURSUANT TO TITLE 14, CALIFORNIA CODE OF REGULATIONS, SECTION 15060(c)(3) BECAUSE THE ACTIVITY IS NOT A PROJECT AS DEFINED BY PUBLIC RESOURCES CODE SECTION 21065 AND TITLE 14, CALIFORNIA CODE OF REGULATIONS, SECTION 15378.

AUTHORIZATION:

APPROVE THE REVISION OF RENT FOR LEASE NO. PRC 7903.2 FROM \$1,623 PER YEAR TO \$2,411 PER YEAR, EFFECTIVE AUGUST 21, 2007.



Parcel No.	APN	County
Parcel 1	APN 127-030-03	Modoc County
Parcel 2	APN 137-060-17	Lassen County
Parcel 3	APN 137-130-01	Lassen County
Parcel 4	APN 137-130-02	Lassen County
Parcel 5	APN 137-060-11	Lassen County
Parcel 6	APN 137-130-01	Lassen County
Parcel 7	APN 137-160-04	Lassen County
Parcel 8	APN 137-160-07	Lassen County

SIERRA PACIFIC POWER COMPANY
 ATTORNEY IN FACT
 CALIFORNIA STATE LANDS COMMISSION PARCELS
 LASSEN COUNTY

NO SCALE

NO SCALE LOCATION MAP

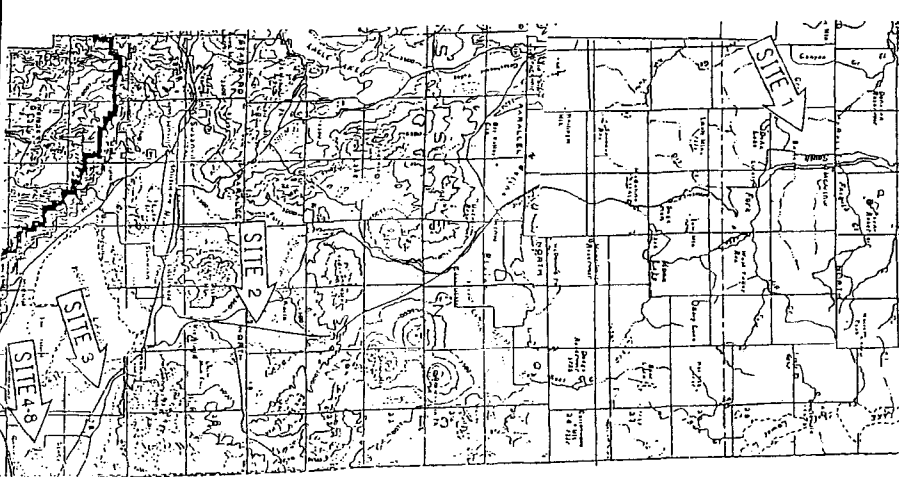
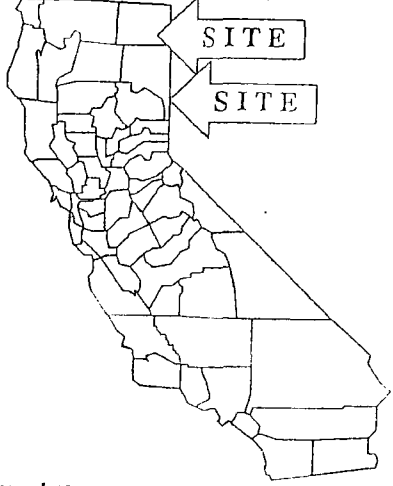


EXHIBIT "A"
PRC 7903.2
 Sierra Pacific Power
 Transmission Line R/W
 School Lands
 MODOC & LASSEN
 COUNTIES



This Exhibit is solely for purposes of generally defining the lease premises, is based on unverified information provided by the Lessee or other parties and is not intended to be, nor shall it be construed as, a waiver or limitation of any State interest in the subject or any other property.