

**CALENDAR ITEM
C24**

A	02		10/20/05
S	04	PRC 3122	WP 3122.9 J. McComas

GENERAL LEASE - PUBLIC AGENCY USE

APPLICANT:

City of Redding
777 Cypress Avenue
Redding, CA 96001

AREA, LAND TYPE, AND LOCATION:

1.62 acres, more or less, of submerged lands in the Sacramento River, city of Redding, Shasta County.

AUTHORIZED USE:

The continued use and maintenance of an existing boat launch ramp, the widening and lengthening of said boat launch ramp, an aluminium boarding dock, steel pylons, and rock for salmon habitat.

LEASE TERM:

25 years, beginning October 20, 2005.

CONSIDERATION:

The public use and benefit with the State reserving the right at any time to set a monetary rental if the Commission finds such action to be in the State's best interest.

OTHER PERTINENT INFORMATION:

1. Applicant owns the uplands adjoining the lease premises.
2. At its April 29, 1964 meeting, the Commission approved a 40-year Life-of-Structure Permit, No. PRC 3212.9, to the city of Redding for the construction, operation, and maintenance of a boat-launching ramp and a log boom in the Sacramento River. That lease has now expired.
3. The City is now proposing to widen and lengthen the Lake Redding boat launch ramp into the River to improve low-flow access and to make the

CALENDAR ITEM NO. C24 (CONT'D)

facility more user-friendly. The City proposes to widen the ramp 10 feet and extend it 25 feet, for a total new dimension of 36 feet wide and 114 feet long, with an eight-foot wide floating aluminium boarding dock along one side. The steel pylons associated with the floating aluminum boarding dock will be replaced to provide a stronger anchor system for the boarding dock. Rock will be placed for salmon habitat. The log boom has been removed. The city of Redding is now applying for a General Lease - Public Agency Use for the continued use and maintenance of an existing boat launch ramp, the widening and lengthening of the said boat launch ramp, a floating aluminium boarding dock, steel pylons, and rock for salmon habitat.

4. A Mitigated Negative Declaration (SCH#2005092023) and Mitigation Monitoring Program were prepared and adopted for this project by the city of Redding acting as the lead agency under the provisions of the CEQA. The California State Lands Commission's staff has reviewed such document.
5. This activity involves lands identified as possessing significant environmental values pursuant to Public Resources Code sections 6370, et seq. Based upon the staff's consultation with the persons nominating such lands and through the CEQA review process, it is the staff's opinion that the project, as proposed, is consistent with its use classification.

APPROVALS OBTAINED:

City of Redding

FURTHER APPROVALS REQUIRED:

U. S. Army Corps of Engineers, U. S. Fish and Wildlife Service, NOAA Fisheries, California Department of Fish and Game, Regional Water Quality Control Board, and the State Reclamation Board

EXHIBITS:

- A. Site Plan and Location Map

PERMIT STREAMLINING ACT DEADLINE:

March 25, 2006

CALENDAR ITEM NO. C24 (CONT'D)

RECOMMENDED ACTION:

IT IS RECOMMENDED THAT THE COMMISSION:

CEQA FINDING:

FIND THAT A MITIGATED NEGATIVE DECLARATION AND A MITIGATION MONITORING PROGRAM WERE PREPARED AND ADOPTED FOR THIS PROJECT BY THE CITY OF REDDING AND THAT THE COMMISSION, AS A RESPONSIBLE AGENCY, HAS REVIEWED AND CONSIDERED THE INFORMATION CONTAINED THEREIN.

ADOPT THE MITIGATION MONITORING PROGRAM, AS CONTAINED ON FILE IN THE SACRAMENTO OFFICE OF THE CALIFORNIA STATE LANDS COMMISSION.

SIGNIFICANT LANDS INVENTORY FINDING:

FIND THAT THIS ACTIVITY IS CONSISTENT WITH THE USE CLASSIFICATION DESIGNATED BY THE COMMISSION FOR THE LAND PURSUANT TO PUBLIC RESOURCES CODE SECTIONS 6370, ET SEQ.

AUTHORIZATION:

AUTHORIZE ISSUANCE TO THE CITY OF REDDING OF A NEW GENERAL LEASE - PUBLIC AGENCY USE, BEGINNING OCTOBER 20, 2005, FOR A TERM OF 25 YEARS, FOR THE CONTINUED USE AND MAINTENANCE OF AN EXISTING BOAT LAUNCH RAMP, THE WIDENING AND LENGTHENING OF SAID BOAT LAUNCH RAMP, ALUMINIUM BOARDING DOCK, STEEL PYLONS, AND ROCK FOR SALMON HABITAT AS REPRESENTED ON THE LAND SHOWN ON EXHIBIT A ATTACHED AND BY THIS REFERENCE MADE A PART HEREOF; CONSIDERATION BEING THE PUBLIC USE AND BENEFIT, WITH THE STATE RESERVING THE RIGHT AT ANY TIME TO SET A MONETARY RENT IF THE COMMISSION FINDS SUCH ACTION TO BE IN THE STATE'S BEST INTEREST.

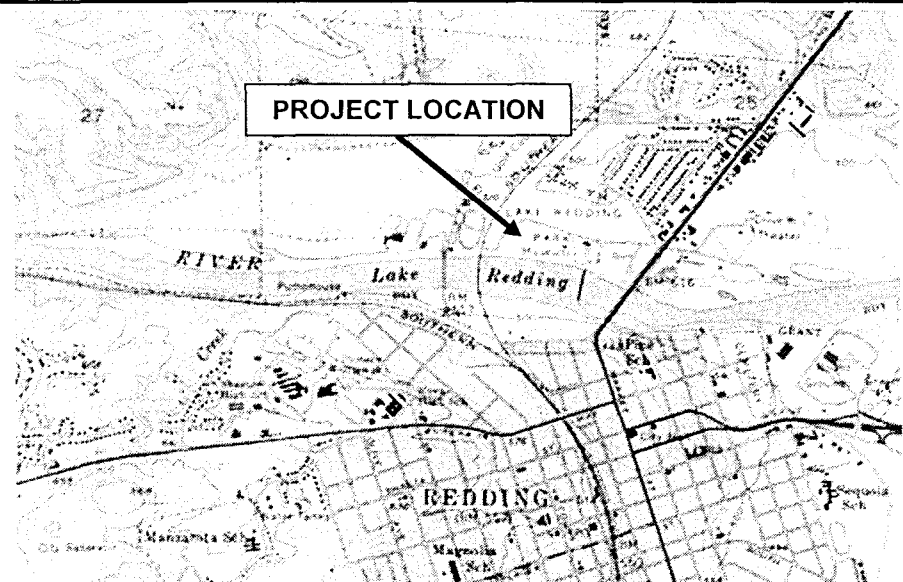
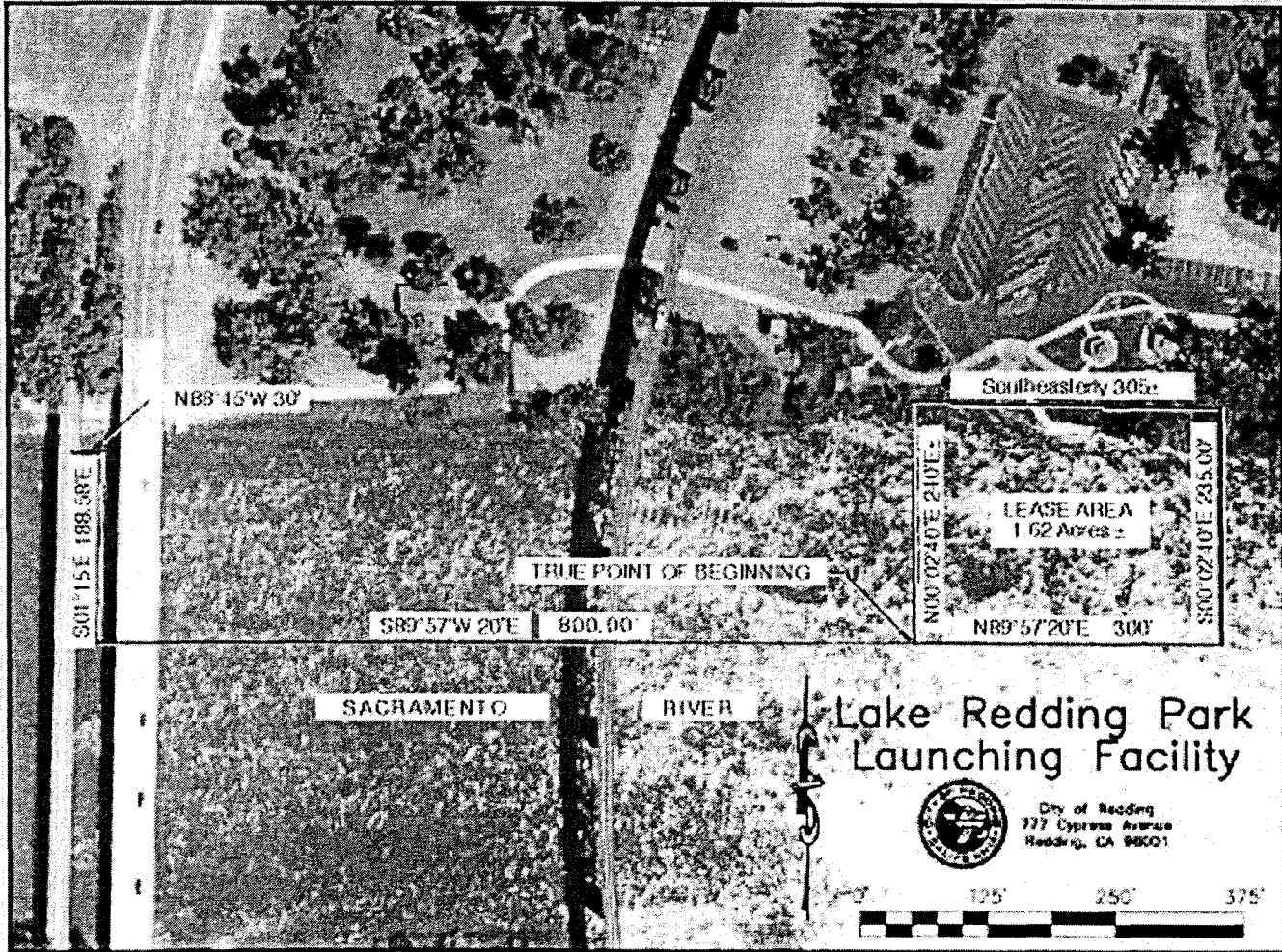


EXHIBIT A
WP 3122
 City of Redding
 General Lease--Public Agency
 Sacramento River
 SHASTA COUNTY



This exhibit is solely for purposes of generally defining the lease premises, is based on unverified information provided by the Lessee or other parties, and is not intended to be, nor shall it be construed as a waiver or limitation of any State interest in the subject or any other property.