

MINUTE ITEM
This Calendar Item No. C20 was approved as
Minute Item No. 20 by the California State Lands
Commission by a vote of 3 to 0 at its
06/20/05 meeting.

**CALENDAR ITEM
C20**

A 15,17, 26

S 05,14

PRC 8499

06/20/05
WP 8499.9
J. McComas

GENERAL LEASE - PUBLIC AGENCY USE

APPLICANT:

City of Stockton
2500 Navy Drive
Stockton, CA 95206-1191

AREA, LAND TYPE, AND LOCATION:

0.10 acres, more or less, of tide and submerged lands in the San Joaquin River,
city of Stockton, San Joaquin County.

AUTHORIZED USE:

Construction, use, and maintenance of a utility crossing bridge.

LEASE TERM:

25 years, beginning June 20, 2005.

CONSIDERATION:

The public use and benefit, with the State reserving the right at any time to set a
monetary rent if the Commission finds that such action to be in the State's best
interest.

OTHER PERTINENT INFORMATION:

1. Applicant owns the uplands adjoining the lease premises.
2. On December 9, 2003, the Commission authorized issuance of Lease No.
PRC 8499 to the city of Stockton for geological borings in connection with
proposed construction of a utility bridge, across the San Joaquin River at
the City's Regional Wastewater Control Facility (RWCF), for light truck
traffic associated with RWCF operations and maintenance. That lease has
expired. The main plant facilities are on the east side of the San Joaquin
River and a series of treatment ponds and additional process units for
tertiary wastewater treatment are on the west side of the River. Because
the San Joaquin River separates the main plant from the ponds and

-1-

000089
CALENDAR PAGE

000959
MINUTE PAGE

CALENDAR ITEM NO. C20 (CONT'D)

tertiary plant, access and coordinated operations are impaired. The city of Stockton is now proposing to construct a utility crossing bridge. Therefore, the city of Stockton is applying for a new General Lease- Public Agency Use for the construction, use, and maintenance of a utility crossing bridge.

The utility crossing will provide 14 feet, 5 inches of vertical clearance above the mean high water in the main channel of the river and at least 100 feet of horizontal clear opening across the main channel. The proposed utility crossing bridge will be located downstream from the BNSF railroad bridge, 12.45 feet vertical clearance, and upstream from the State Route 4 bridge 13.45 feet vertical clearance. Both of these bridges are listed on current navigational charts as fixed bridges and are considered permanent. The proposed utility crossing will also be considered permanent. Therefore, navigation will not be impaired by the construction of the crossing. All conditions of the permits required by the U.S. Coast Guard to maintain navigability will be implemented.

3. The proposed utility crossing bridge is designed for pedestrians, highway truck loading (HS20) and 400 pounds per foot of utility loading. The crossing will be constructed as a fixed bridge. Even though the bridge is designed to carry highway loads, only carts, passenger cars, or light trucks, associated with plant operations and maintenance, will use the crossing. There are 5 conduits to be hung beneath the bridge crossing. One conduit will be a 10-inch diameter cement lined ductile iron (CLDI) pipe for future water connection. The remaining four will be rigid galvanized conduits (RGC), 4 1/2-inches in diameter. Two of the RGC are for future use and two of them will house a new power feed. The new power feed consists of a 12.47kV feeder circuit connecting the portion of the RWCF on the west side of the River with the facilities on the east side of the River. All utilities will be new; there are no current dedicated power connections between the Main Plant (east side of the River) and the Ponds/Tertiary Plant (west side of the River).

The crossing will be constructed of precast girders with a cast-in-place concrete deck and concrete parapet rail topped with a two-tube bicycle rail. The girders will be supported by cast-in-place concrete bent caps on steel pile bents. The overall width of the superstructure will be 14 feet, with a 12-foot clear roadway and an over the River span of 285 feet.

CALENDAR ITEM NO. C20 (CONT'D)

4. The construction area comprises approximately 2.3 acres and includes the utility crossing spanning the River, temporary work trestles adjacent to the crossing, an area of 50 feet on either side of the span, the access areas on both the west and east sides of the River and adjacent construction areas. Final project components will consist of the concrete span, access roads on each side of the River, fill material used to construct the access roads and placement of approximately 100 tons of riprap along the levees 100 feet upstream and downstream of the utility crossing.

The utility crossing bridge will be constructed using shore-based and above-water equipment. Temporary work trestles extending approximately 96 feet from each of the adjacent levees will likely be constructed parallel to the utility crossing to provide equipment access during construction. The temporary work trestles will be supported by pilings that will be installed by vibratory or impact hammers. The work trestles and pilings will be removed once the utility crossing is in place. A barge may be used to transport the precast girders to the project site.

5. The purpose of this project is to increase the efficiency of RWCF operations by providing a direct access route between the main and tertiary plants. The access route will allow for passage of light trucks associated with plant operations and maintenance and will support wiring to connect the RWCF's control facilities and allow operations of process units from either side of the River.
6. A Mitigated Negative Declaration and Mitigation Monitoring Program were prepared and adopted for this project by the city of Stockton. The California State Lands Commission's staff has reviewed such document.
7. This activity involves lands identified as possessing significant environmental values pursuant to Public Resources Code sections 6370, et seq. Based upon the staff's consultation with the persons nominating such lands and through the CEQA review process, it is the staff's opinion that the project, as proposed, is consistent with its use classification.

APPROVALS OBTAINED:

United States Coast Guard; NOAA Fisheries; United States Fish and Wildlife Service; California Department of Fish and Game; Native American Heritage Commission; State Reclamation Board.

CALENDAR ITEM NO. C20 (CONT'D)

EXHIBITS:

- A. Site/Location
- B. Notice Of Determination

PERMIT STREAMLINING ACT DEADLINE:

November 15, 2005

RECOMMENDED ACTION:

IT IS RECOMMENDED THAT THE COMMISSION:

CEQA FINDING:

FIND THAT A MITIGATED NEGATIVE DECLARATION AND A MITIGATION MONITORING PROGRAM WERE PREPARED AND ADOPTED FOR THIS PROJECT BY THE CITY OF STOCKTON AND THAT THE COMMISSION HAS REVIEWED AND CONSIDERED THE INFORMATION CONTAINED THEREIN.

ADOPT THE MITIGATION MONITORING PROGRAM ON FILE IN THE SACRAMENTO OFFICE OF THE STATE LANDS COMMISSION.

SIGNIFICANT LANDS INVENTORY FINDING:

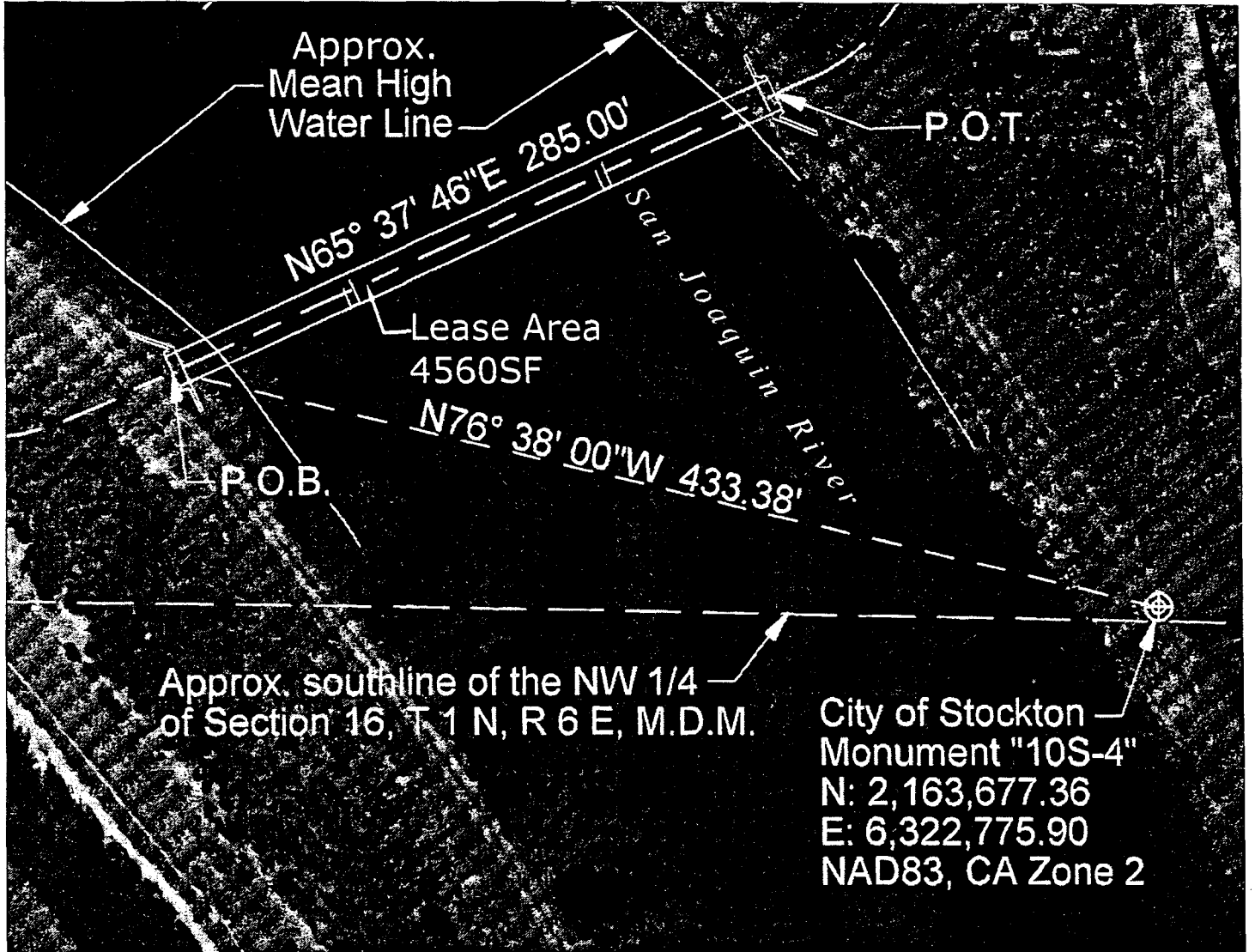
FIND THAT THIS ACTIVITY IS CONSISTENT WITH THE USE CLASSIFICATION DESIGNATED BY THE COMMISSION FOR THE LAND PURSUANT TO PUBLIC RESOURCES CODE SECTIONS 6370, ET SEQ.

AUTHORIZATION:

AUTHORIZE ISSUANCE TO THE CITY OF STOCKTON OF A GENERAL LEASE - PUBLIC AGENCY USE, BEGINNING JUNE 20, 2005, FOR A TERM OF 25 YEARS, FOR THE CONSTRUCTION, USE, AND MAINTENANCE OF A UTILITY CROSSING BRIDGE AS REPRESENTED ON THE LAND SHOWN ON EXHIBIT A ATTACHED AND BY THIS REFERENCE MADE A PART HEREOF; IN CONSIDERATION OF THE PUBLIC USE AND BENEFIT, WITH THE STATE RESERVING THE RIGHT AT ANY TIME TO SET A MONETARY RENT IF THE COMMISSION FINDS SUCH ACTION TO BE IN THE STATE'S BEST INTEREST.

NO SCALE

SITE



Approx. southline of the NW 1/4
of Section 16, T 1 N, R 6 E, M.D.M.

City of Stockton
Monument "10S-4"
N: 2,163,677.36
E: 6,322,775.90
NAD83, CA Zone 2

PIER & BRIDGE LEASE AREA, SAN JOAQUIN RIVER

NO SCALE

LOCATION

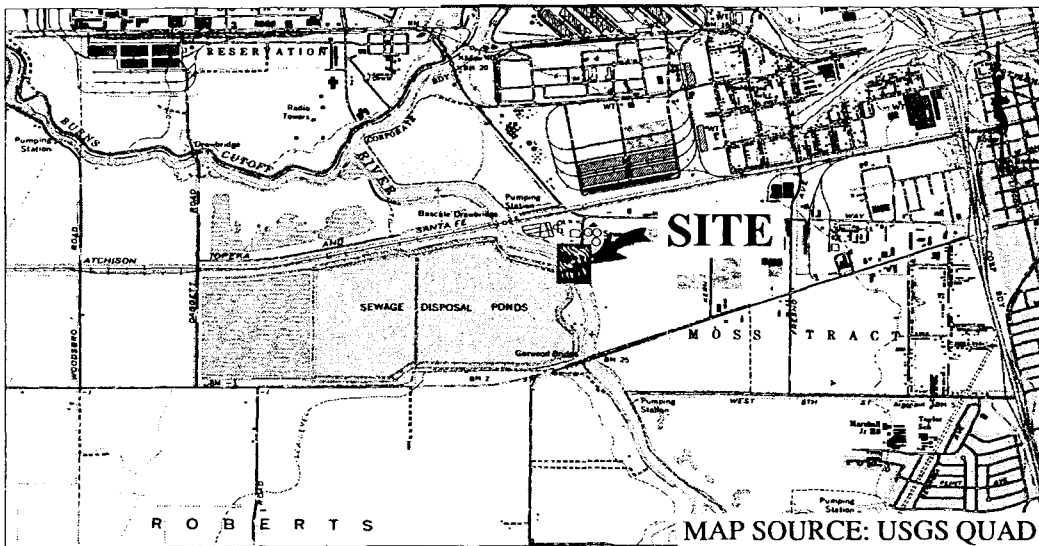


Exhibit A

WP 8499
GENERAL LEASE
PUBLIC AGENCY USE
CITY OF STOCKTON
SAN JOAQUIN COUNTY



This Exhibit is solely for purposes of generally defining the lease premises, is based on unverified information provided by the Lessee or other parties and is not intended to be, nor shall it be construed as, a waiver or limitation of any State interest in the subject or any other property.

CALENDAR PAGE

MINUTE PAGE

CITY OF STOCKTON
NOTICE OF DETERMINATION

ASSESSOR RECORDER
COUNTY CLERK
GARY W. FREEMAN

05 JUN -8 PM 2:21

SAN JOAQUIN COUNTY

BY P. Paulsen
DEPUTY

To: County Clerk
San Joaquin County

Office of Planning and Research
P.O. Box 3044
Sacramento, CA 95812-3044

FROM: Lead Agency
City of Stockton
c/o Community Development Department
Planning Division
345 North El Dorado Street
Stockton, CA 95202-1997

Contact Person: Senior Planner David Stagnaro, AICP

Phone: (209) 937-8598

SUBJECT: NOTICE OF DETERMINATION PURSUANT TO PUBLIC RESOURCES CODE, SECTION 21152 AND CAL. CODE OF REGULATIONS, TITLE 14, SECTIONS 15075, 15091, 15093, 15094, AND/OR 15096(i)

Project Title: Stockton Regional Wastewater Control Facility Utility Crossing

City of Stockton EIR and/or IS File No(s): IS25-04 SCH No.: 2005022067

Discretionary Application(s) File No(s): N/A Project Applicant: City of Stockton, Municipal Utilities Department

Project Description/Location: The City of Stockton operates its Regional Wastewater Control Facility (FWCF) on 690 acres south of the Port of Stockton and Rough and Ready Island. The main plant facilities are on the east side of the San Joaquin River, and a series of treatment ponds and process units for tertiary wastewater treatment are on the west side of the river. Because the San Joaquin River separates the main plant from the ponds and tertiary units, access and coordinated operations are limited. The proposed utility crossing will connect facilities on the east and west sides at approximately River Mile 41. The crossing will increase efficiency by providing an access route between the main and tertiary plants for light truck traffic and wiring.

DETERMINATIONS: This is to advise that the City of Stockton, as a Lead Agency, under the California Environmental Quality Act (CEQA), approved the above-described project/action on June 7, 2005, and has made the following determinations regarding the project.

1. The project will will not] have a significant effect on the environment.
2. An Environmental Impact Report was prepared for this project pursuant to the provisions of CEQA.
 A Negative Declaration was prepared for this project pursuant to the provisions of CEQA.
3. Findings (were were not) made pursuant to Cal. Code of Regulations, Title 14 Section (15091-EIR) (15075-Neg Dec) and Mitigation measures (were were not) incorporated as part of the approval of the project.
4. Mitigation Monitoring and Reporting Program was was not) adopted for this project.
5. Statement of Overriding Considerations was was not] adopted for this project.
6. Pursuant to Cal. Code of Regulations, Title 14, Sections 753.5(a) or 753.5(c):
 California Department of Fish and Game fees are required, as applicable, and will be filed with this NOD; or
 This project is exempt from the CDFG fees and a Certificate of Fee Exemption has been prepared and will be filed with the NOD.
 CDFG Fees were filed with a prior NOD for this project/proposal (see attached receipt).

This is to certify that the environmental documentation and determinations for the project/action and any related mitigation measures, monitoring provisions, findings and statements of overriding consideration have been adopted on the basis of the whole record before the City and reflect the City's independent judgment and analysis. The environmental review record and record of the project approval may be examined at the above-noted Lead Agency address.

JAMES E. GLASER, DIRECTOR
COMMUNITY DEVELOPMENT DEPARTMENT

By: [Signature]
Senior Planner David Stagnaro, AICP

RECEIVED
JUN 08 2005
STATE CLEARING HOUSE

Date: June 8, 2005

AFFIDAVIT OF FILING AND POSTING

I declare that on the date stamped above, I received and posted this notice as required by California Public Resources Code Section 21152(c). Said notice will remain posted for 30 days from the filing date.

Signature: [Signature]

Title: DEPUTY COUNTY CLERK

Posting Period Ending Date: 7/8/05

:::ODMAIGRPWISEICOS.CDD.CDD_Library:47089.1

000094
EXHIBIT B
CALENDAR PAGE

000055
MINUTE PAGE