

This Calendar Item No. C30 was approved as Minute Item No. 30 by the California State Lands Commission by a vote of 3 to 2 at its 4-26-05 meeting.

**CALENDAR ITEM  
C30**

A 3  
S 1

04/26/05  
PRC 7458.2  
N. Lee

**CONTINUATION OF RENT**

**LESSEE:**

Plumas-Sierra Rural Electric Cooperative

**AREA, LAND TYPE, AND LOCATION:**

3.53 acres, more or less, of State School Lands located in Section 36, Township 24 North, Range 17 East, MDM near the town of Doyle, Lassen County.

**AUTHORIZED USE:**

Use and maintenance of an existing overhead 69kV transmission line and a 7.2kV distribution line.

**LEASE TERM:**

25 years, beginning September 27, 1990.

**CONSIDERATION:**

This lease provides that Lessor may modify the rent periodically during the lease term. Pursuant to this provision, staff has conducted a review of the rent under this lease, and recommends that the rent be continued at \$690 per year payable in five-year increments effective September 27, 2005.

**OTHER PERTINENT INFORMATION:**

1. On September 27, 1990, the Commission authorized a General Lease – Right Of Way Use to Plumas-Sierra Rural Electric Cooperative for a term of 25 years covering construction and maintenance of an overhead 69kV transmission line and maintenance of an existing 7.2kV distribution line. The transmission line and distribution line are located on approximately 3.53 acres of State School Land near the town of Doyle. This lease will expire on September 26, 2015.

CALENDAR ITEM NO. C30 (CONT'D)

2. Pursuant to the Commission's delegation of authority and the State CEQA Guidelines [Title 14, California Code of Regulations, section 15060(c)(3)], the staff has determined that this activity is not subject to the provisions of the CEQA because it is not a "project" as defined by the CEQA and the State CEQA Guidelines.

Authority: Public Resources Code section 21065 and Title 14, California Code of Regulations, sections 15060(c)(3) and 15378.

**EXHIBIT:**

- A. Location and Site Map

**RECOMMENDED ACTION:**

IT IS RECOMMENDED THAT THE COMMISSION:

**CEQA FINDING:**

FIND THAT THE ACTIVITY IS NOT SUBJECT TO THE REQUIREMENTS OF THE CEQA PURSUANT TO TITLE 14, CALIFORNIA CODE OF REGULATIONS, SECTION 15060(c)(3) BECAUSE THE ACTIVITY IS NOT A PROJECT AS DEFINED BY PUBLIC RESOURCES CODE SECTION 21065 AND TITLE 14, CALIFORNIA CODE OF REGULATIONS, SECTION 15378.

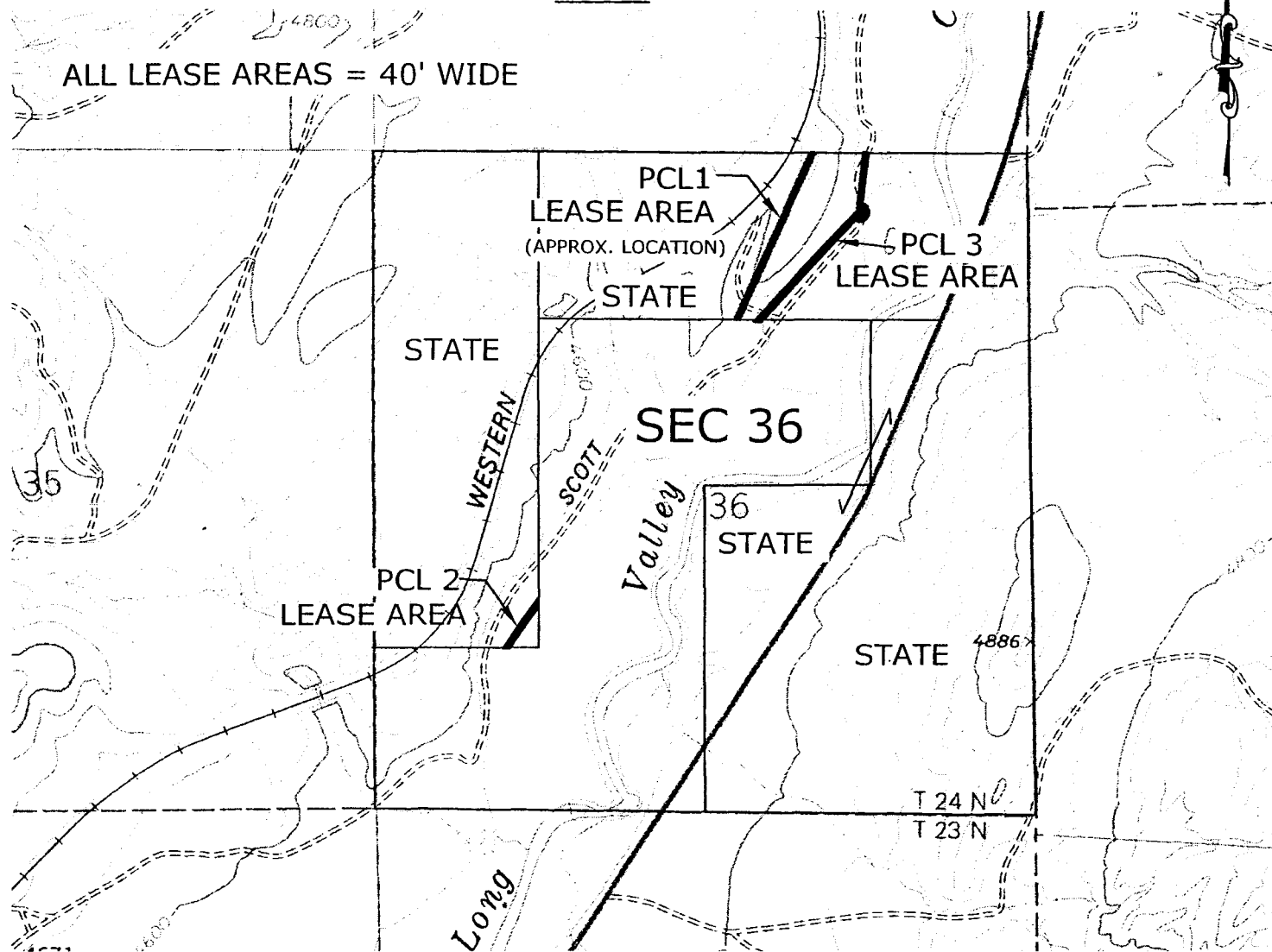
**AUTHORIZATION:**

APPROVE THE CONTINUATION OF RENT FOR LEASE NO. PRC 7458.2 AT \$690 PER YEAR, EFFECTIVE SEPTEMBER 27, 2005.

NO SCALE

# SITE

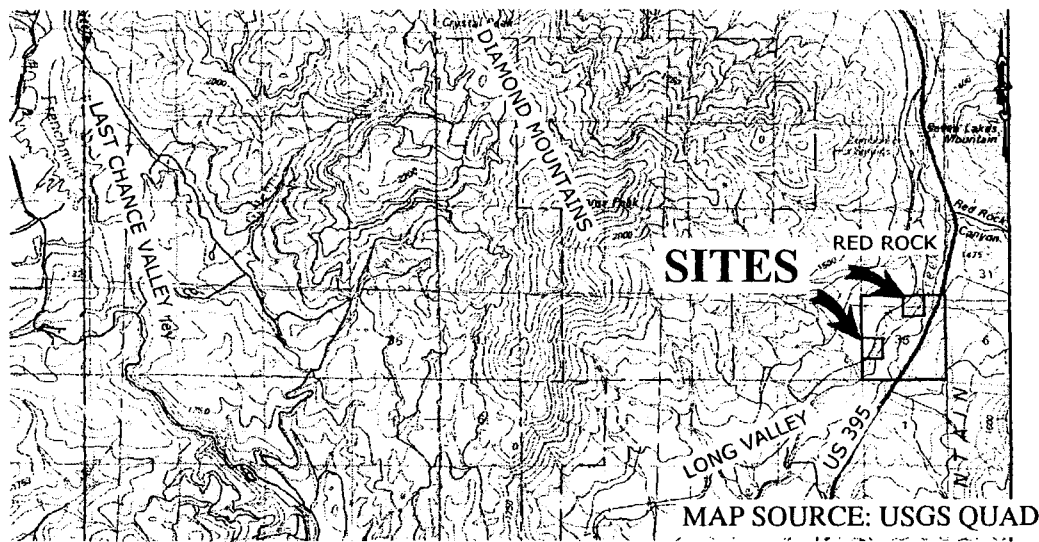
ALL LEASE AREAS = 40' WIDE



SECTION 36, T24N R17E, MDM

NO SCALE

# LOCATION



MAP SOURCE: USGS QUAD

# Exhibit A

PRC 7458.2  
 GENERAL LEASE  
 R/W USE & MAINTENANCE  
 SCHOOL LANDS  
 LASSEN COUNTY



This Exhibit is solely for purposes of generally defining the lease premises, is based on unverified information provided by the Lessee or other parties and is not intended to be, nor shall it be construed as, a waiver or limitation of any State interest in the subject or any other property.