

**MINUTE ITEM**  
This Calendar Item No. 014 was approved as  
Minute Item No. 111 by the California State Lands  
Commission by a vote of 2 to 0 at its  
06/07/04 meeting.

**CALENDAR ITEM  
C14**

A 12

S 26

PRC 8531

06/07/04

W 25976

D. Jones

**GENERAL LEASE - RIGHT OF WAY USE**

**APPLICANT:**

Turlock Irrigation District  
333 East Canal Drive  
Turlock, California 95381

**AREA, LAND TYPE, AND LOCATION:**

.22 acre, more or less, of submerged lands in the San Joaquin River, near the city of Patterson, Stanislaus County.

**AUTHORIZED USE:**

The construction, use and maintenance of a 115 kV electrical transmission line.

**LEASE TERM:**

25 years, beginning June 1, 2004.

**CONSIDERATION:**

The public use and benefit; with the State reserving the right at any time to set a monetary rent if the Commission finds such action to be in the State's best interest.

**OTHER PERTINENT INFORMATION:**

1. Applicant has a right to use the uplands adjoining the lease premises.
2. The Turlock Irrigation District (TID) is building the Westside Transmission Line Project to deliver power from its traditional service area east of the San Joaquin River to the portion of western Stanislaus County where the TID is acquiring electrical distribution facilities from PG&E. The proposed project would consist of a new 15.3 mile double-circuit 115 kV transmission line that would cross the San Joaquin Valley from the Walnut Substation west of Turlock to the new South Patterson Substation. The new transmission line and substation would connect TID's electrical system to the more than 230 miles of overhead and underground

CALENDAR ITEM NO. C14 (CONT'D)

distribution lines and related distribution facilities that TID plans to acquire this year. The proposed electrical transmission line will cross over the San Joaquin River; however the poles will be located outside of the Commission's jurisdiction. At the river crossing and within the floodplain, the poles will be made of weathered steel or spun concrete to support the overhead transmission line to avoid leaching of preservatives used on wood poles.

3. Findings made in conformance with the State CEQA Guidelines (Title 14, California Code of Regulations, sections 15091 and 15096) are contained in the Sacramento Office of the State Lands Commission and by reference made a part hereof.
4. An EIR was prepared and certified for this project by the Turlock Irrigation District. The California State Lands Commission staff has reviewed such document and Mitigation Monitoring Program adopted by the lead agency.
5. This activity involves lands identified as possessing significant environmental values pursuant to Public Resources Code sections 6370, et seq. Based upon the staff's consultation with the persons nominating such lands and through the CEQA review process, it is the staff's opinion that the project, as proposed, is consistent with its use classification.

**APPROVALS OBTAINED:**

U. S. Army Corps of Engineers, California Department of Fish and Game,  
California Reclamation Board, California Regional Water Quality Control Board.

**EXHIBIT:**

- A. Site Map and Location Map

**PERMIT STREAMLINING ACT DEADLINE:**

September 8, 2004

CALENDAR ITEM NO. C14 (CONT'D)

**RECOMMENDED ACTION:**

IT IS RECOMMENDED THAT THE COMMISSION:

**CEQA FINDING:**

1. FIND THAT AN EIR WAS PREPARED AND CERTIFIED FOR THIS PROJECT BY THE TURLOCK IRRIGATION DISTRICT AND THAT THE COMMISSION HAS REVIEWED AND CONSIDERED THE INFORMATION CONTAINED THEREIN.
2. ADOPT THE FINDINGS MADE IN CONFORMANCE WITH TITLE 14, CALIFORNIA CODE OF REGULATIONS, SECTIONS 15091 AND 15096(h), ON FILE IN THE SACRAMENTO OFFICE OF THE STATE LANDS COMMISSION AND BY REFERENCE MADE A PART HEREOF.
3. ADOPT THE MITIGATION MONITORING PROGRAM ON FILE IN THE SACRAMENTO OFFICE OF THE STATE LANDS COMMISSION AND BY REFERENCE MADE A PART HEREOF.

**SIGNIFICANT LANDS INVENTORY FINDING:**

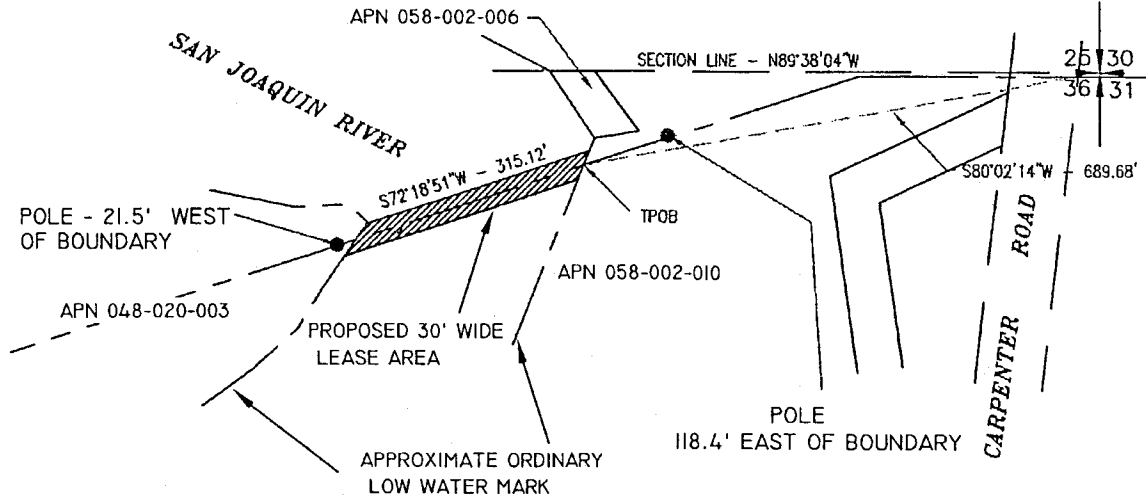
FIND THAT THIS ACTIVITY IS CONSISTENT WITH THE USE CLASSIFICATION DESIGNATED BY THE COMMISSION FOR THE LAND PURSUANT TO PUBLIC RESOURCES CODE SECTIONS 6370, ET SEQ.

**AUTHORIZATION:**

AUTHORIZE ISSUANCE TO THE TURLOCK IRRIGATION DISTRICT OF A GENERAL LEASE - RIGHT OF WAY USE, BEGINNING JUNE 1, 2004, FOR A TERM OF 25 YEARS, FOR THE CONSTRUCTION, USE AND MAINTENANCE OF A 115 KV ELECTRICAL TRANSMISSION LINE ON THE LAND SHOWN ON EXHIBIT A ATTACHED AND BY THIS REFERENCE MADE A PART HEREOF; CONSIDERATION: THE PUBLIC USE AND BENEFIT; WITH THE STATE RESERVING THE RIGHT AT ANY TIME TO SET A MONETARY RENT IF THE COMMISSION FINDS SUCH ACTION TO BE IN THE STATE'S BEST INTEREST.

NO SCALE

# SITE MAP



San Joaquin River, near Patterson,  
Portion of Section 36, T. 5 S., R. 8 E., MDM.

# LOCATION MAP NO SCALE

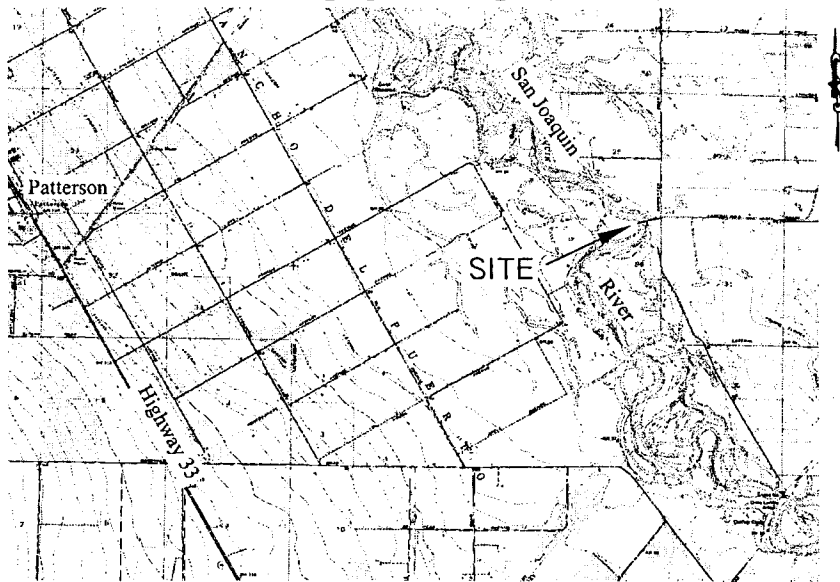


Exhibit A  
W25976  
115 - KV  
Transmission Line  
Turlock Irrigation District  
Stanislaus County



This Exhibit is solely for purposes of generally defining the lease premises, is based on unverified information provided by the lessee or other parties and is not intended to be, nor shall it be construed as, a waiver or limitation of any state interest in the subject or any other property.  
MAP SOURCE: USGS QUAD

RAB 05-04

000061

CALENDAR PAGE

000770

MINUTE PAGE