

MINUTE ITEM

This Calendar Item No. C29 was approved as Minute Item No. 29 by the California State Lands Commission by a vote of 2 to 0 at its 5-9-96 meeting.

CALENDAR ITEM

C29

A 17

05/09/96

S 5

W 2400.192

D. Jones

CONSIDERATION OF BOUNDARIES AND PROPOSAL TO ANNEX TIDE AND SUBMERGED LANDS INTO THE CITY OF LATHROP, SAN JOAQUIN COUNTY

APPLICANT:

City of Lathrop
16775 Howland Road, Suite One
Lathrop, California 95330

BACKGROUND:

The State Lands Commission has received a request from the City of Lathrop, as required by Government Code Section 56108, to approve the boundaries and consent to the annexation of the tidelands and submerged lands within the area encompassed in the West Lathrop Specific Plan.

Pursuant to Government Code Section 56108(c) and (d), whenever State-owned tidelands and submerged lands are included within a proposed annexation, the Commission is to review and approve or deny the proposed annexation boundaries as appropriate and correct. The Commission must act within 45 days following receipt of the request for approval by the project proponent.

The subject area includes tidelands and submerged lands in the beds of Old River and the San Joaquin River adjacent to the city limits of the City of Lathrop.

The staff of the Commission has reviewed the proposed annexation boundary description and finds it adequate pursuant to California Government Code Section 56108© and (d).

Furthermore, staff of the Commission has no objection to transfer of local political jurisdiction from the County of San Joaquin to the city and recommends that the Commission indicate its consent to annexation as property owner pursuant to California Government Code Section 56108(a).

CALENDAR PAGE	234
MINUTE PAGE	000942

CALENDAR ITEM NO. **C29** (CONT'D)

STATUTORY AND OTHER REFERENCES:

- A. Public Resources Code: Div. 6, Parts 1 and 2; Div. 13.
- B. California Code Regulations: Title 2, Div. 3; Title 14, Div. 6.

EXHIBITS:

- A. Land Description
- B. Site Map
- C. Location Map

AB 884:

N/A

RECOMMENDED ACTION:

IT IS RECOMMENDED THAT THE COMMISSION:

1. FIND THAT THE ACTIVITY IS EXEMPT FROM THE REQUIREMENTS OF THE CEQA PURSUANT TO 14 CAL. CODE REGS. 15061 BECAUSE THE ACTIVITY IS NOT A PROJECT AS DEFINED BY PUBLIC RESOURCES CODE SECTION 21065 AND 14 CAL. CODE REGS. 15378.
2. APPROVE THE PROPOSED BOUNDARIES FOR THE PROPOSED ANNEXATION TO THE CITY OF LATHROP, SAN JOAQUIN COUNTY, AS DESCRIBED IN EXHIBIT "A" ATTACHED AND BY REFERENCE MADE A PART HEREOF, PURSUANT TO CALIFORNIA GOVERNMENT CODE SECTION 56108(c) AND (d).
3. CONSENT, AS THE LANDOWNER, TO THE PROPOSED ANNEXATION OF STATE TIDE AND SUBMERGED LANDS UNDER THE JURISDICTION OF THE STATE LANDS COMMISSION IN OLD RIVER AND IN THE SAN JOAQUIN RIVER WITHIN THE AREA DESCRIBED IN EXHIBIT "A", PURSUANT TO GOVERNMENT CODE SECTION 56108(a).
4. AUTHORIZE STAFF COUNSEL TO GIVE THE REQUISITE NOTICE OF SAID APPROVAL TO THE CITY OF LATHROP AND TO THE COUNTY OF SAN JOAQUIN, PURSUANT TO CALIFORNIA GOVERNMENT CODE SECTION 56108(e).

EXHIBIT A

March 20, 1996

**DESCRIPTION OF
PROPOSED ANNEXATION
TO THE
CITY OF LATHROP**

San Joaquin County, California

A portion of land situate within Township 1 South, Range 6 East, Mount Diablo Base and Meridian, as shown on said Township Plat surveyed in 1879, and Township 2 South, Range 6 East, Mount Diablo Base and Meridian, as shown on said Township Plat surveyed in 1869, and the "Rancho El Pescadero" granted to A. M. Pico and H. M. Naglee by United States Patent in 1865, and the "Rancho El Pescadero" granted to H. Grimes, et. al. by United States Patent in 1858, in the County of San Joaquin, State of California, more particularly described as follows:

BEGINNING within Section 27, of said Township 1 South, Range 6 East, at the intersection of the northerly line of Louise Avenue with the westerly line of Interstate Route No. 5, as described in the Certificate of Filing, recorded on June 20, 1989 as Instrument Number 89055167, San Joaquin County Records, said point of intersection being a point in the westerly line of the existing City of Lathrop incorporation boundary; thence leaving said westerly line of the City of Lathrop and continuing along said northerly line of Louise Avenue, North 89°31'20" West 75.00 feet as shown on Sheet No. 9 of 14, of the Interstate Route No. 5, State Highway Map, on file with the State of California, Transportation Agency, Department of Public Works, Division of Highways, District 10 office in San Joaquin County; thence continuing along the westerly prolongation of said northerly line of Louise Avenue, North 89°31'20" West 1250.14 feet to a point in the easterly line of the 316.38 acre property of M. F. Oliveira and American Creamery Company as shown in Book of Surveys, Volume 3 on Page 44, San Joaquin County Records; thence along the easterly and northerly lines of said 316.38 acre property of M. F. Oliveira and American Creamery Company the following four (4) courses:

- 1) North 36°03'40" West 1941.36 feet;
- 2) thence North 18°58'40" West 1038.34 feet;
- 3) thence North 89°56'40" West 1981.19 feet;
- 4) thence South 44°48'20" West 378.18 feet,

to a point designated "F" as shown in said Book of Surveys, Volume 3 on Page 44, said point "F" being in the centerline of the levee along the right bank of the San Joaquin River as described in the Affidavit Terminating Life Estate, recorded on May 2, 1994, as Instrument Number 94055894, San Joaquin County Records; thence along the prolongation of the preceding course, South 44°48'20" West 64 feet, more or less, to the right bank of the San Joaquin River; thence along a course perpendicular to the existing centerline of the San Joaquin River as determined by the aerial survey dated May 13, 1993, performed by Aerial Photomapping Services, Inc. located in Fresno, California, and on file in the offices of Kjeldsen, Sinnock & Neudeck, Inc. located in Stockton, California, South 79°05'47" West 95 feet, more or less, to the centerline of the San Joaquin River; thence meandering along the centerline of the San Joaquin River, as determined by said 1993 aerial survey, the following forty-seven (47) courses:

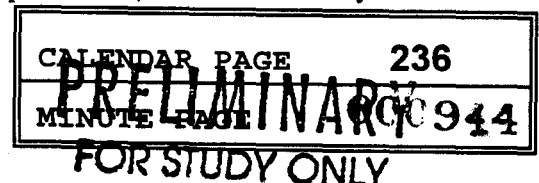


EXHIBIT A

March 20, 1996

- 1) South 10°54'13" East 48 feet;
- 2) thence South 12°10'46" West 26 feet;
- 3) thence South 12°10'46" West 75 feet;
- 4) thence South 21°38'58" West 200 feet;
- 5) thence South 34°29'09" West 202 feet;
- 6) thence South 47°25'00" West 199 feet;
- 7) thence South 63°16'04" West 198 feet;
- 8) thence South 85°14'04" West 200 feet;
- 9) thence North 77°31'00" West 200 feet;
- 10) thence North 72°03'29" West 199 feet;
- 11) thence North 77°20'58" West 86 feet;
- 12) thence North 76°57'39" West 57 feet;
- 13) thence South 68°08'02" West 67 feet;
- 14) thence South 47°04'01" West 101 feet;
- 15) thence South 26°24'28" West 101 feet;
- 16) thence South 11°02'22" West 205 feet;
- 17) thence South 09°33'40" East 192 feet;
- 18) thence South 25°16'32" East 197 feet;
- 19) thence South 47°35'45" East 218 feet;
- 20) thence South 62°15'32" East 205 feet;
- 21) thence South 65°06'07" East 91 feet;
- 22) thence South 54°38'38" East 112 feet;
- 23) thence South 37°30'36" East 126 feet;
- 24) thence South 03°40'20" West 112 feet;
- 25) thence South 31°45'15" West 93 feet;
- 26) thence South 43°47'29" West 122 feet;
- 27) thence South 45°20'12" West 200 feet;
- 28) thence South 50°49'50" West 200 feet;
- 29) thence South 56°02'14" West 191 feet;
- 30) thence South 64°25'43" West 212 feet;
- 31) thence South 82°53'47" West 194 feet;
- 32) thence South 83°51'10" West 218 feet;
- 33) thence North 88°11'03" West 176 feet;
- 34) thence North 89°36'10" West 217 feet;
- 35) thence South 80°34'05" West 195 feet;
- 36) thence South 74°00'14" West 202 feet;
- 37) thence South 64°39'02" West 210 feet;
- 38) thence South 50°00'47" West 189 feet;
- 39) thence South 46°32'11" West 192 feet;
- 40) thence South 47°26'52" West 208 feet;
- 41) thence South 63°44'24" West 207 feet;
- 42) thence South 52°39'34" West 46 feet;
- 43) thence South 38°50'33" West 42 feet;
- 44) thence South 16°41'10" West 37 feet;

CALENDAR PAGE	237
MINUTE PAGE	000945
PRELIMINARY	
FOR STUDY ONLY	

EXHIBIT A

March 20, 1996

- 45) thence South 06°01'31" East 49 feet;
- 46) thence South 27°54'27" East 63 feet;
- 47) thence South 20°01'28" East 201 feet,

to the intersection of the existing centerline of the San Joaquin River with the existing centerline of Old River; thence meandering along the existing centerline of Old River, as determined by said 1993 aerial survey, the following two hundred and forty-six (246) courses:

- 1) North 74°41'18" West 265 feet;
- 2) thence North 75°31'52" West 138 feet;
- 3) thence South 86°57'55" West 204 feet;
- 4) thence South 79°10'02" West 216 feet;
- 5) thence South 74°59'05" West 187 feet;
- 6) thence South 85°40'36" West 201 feet;
- 7) thence North 88°53'20" West 183 feet;
- 8) thence North 78°05'34" West 230 feet;
- 9) thence North 68°40'40" West 187 feet;
- 10) thence North 60°19'17" West 206 feet;
- 11) thence North 50°58'03" West 191 feet;
- 12) thence North 45°59'34" West 202 feet;
- 13) thence North 34°41'14" West 211 feet;
- 14) thence North 20°27'20" West 197 feet;
- 15) thence North 08°04'52" West 200 feet;
- 16) thence North 02°33'59" West 200 feet;
- 17) thence North 02°42'09" West 200 feet;
- 18) thence North 02°21'55" West 200 feet;
- 19) thence North 04°10'54" East 200 feet;
- 20) thence North 07°40'42" East 201 feet;
- 21) thence North 14°51'24" East 214 feet;
- 22) thence North 24°23'24" East 190 feet;
- 23) thence North 32°18'29" East 201 feet;
- 24) thence North 38°20'20" East 201 feet;
- 25) thence North 34°52'00" East 201 feet;
- 26) thence North 26°51'05" East 202 feet;
- 27) thence North 19°57'16" East 202 feet;
- 28) thence North 11°52'59" East 202 feet;
- 29) thence North 02°26'07" West 203 feet;
- 30) thence North 17°50'20" West 203 feet;
- 31) thence North 33°57'52" West 199 feet;
- 32) thence North 41°27'23" West 201 feet;
- 33) thence North 53°02'40" West 201 feet;
- 34) thence North 62°07'47" West 209 feet;
- 35) thence North 69°45'50" West 193 feet;
- 36) thence North 61°53'46" West 197 feet;
- 37) thence North 59°14'51" West 204 feet;

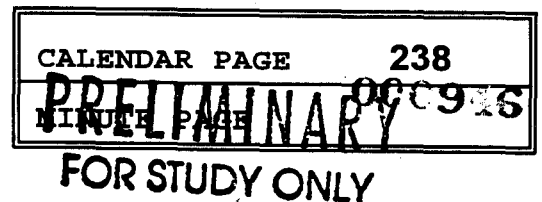


EXHIBIT A

March 20, 1996

- 38) thence North 57°58'24" West 188 feet;
- 39) thence North 54°58'43" West 212 feet;
- 40) thence North 46°37'15" West 124 feet;
- 41) thence North 61°17'28" West 280 feet;
- 42) thence North 77°54'27" West 100 feet;
- 43) thence South 76°40'49" West 99 feet;
- 44) thence South 45°50'54" West 87 feet;
- 45) thence South 27°54'45" West 107 feet;
- 46) thence South 04°37'22" West 201 feet;
- 47) thence South 04°46'03" West 208 feet;
- 48) thence South 07°08'10" West 192 feet;
- 49) thence South 07°33'49" West 219 feet;
- 50) thence South 08°52'27" West 181 feet;
- 51) thence South 06°35'17" West 212 feet;
- 52) thence South 14°24'02" West 189 feet;
- 53) thence South 28°25'18" West 86 feet;
- 54) thence South 42°41'50" West 111 feet;
- 55) thence South 72°08'26" West 89 feet;
- 56) thence North 65°04'01" West 124 feet;
- 57) thence North 40°38'38" West 204 feet;
- 58) thence North 37°15'35" West 210 feet;
- 59) thence North 48°15'34" West 192 feet;
- 60) thence North 50°19'01" West 217 feet;
- 61) thence North 49°42'05" West 184 feet;
- 62) thence North 47°05'52" West 186 feet;
- 63) thence North 47°34'19" West 214 feet;
- 64) thence North 48°12'46" West 200 feet;
- 65) thence North 43°24'51" West 201 feet;
- 66) thence North 44°54'48" West 200 feet;
- 67) thence North 44°51'57" West 107 feet;
- 68) thence North 68°22'59" West 100 feet;
- 69) thence South 81°01'31" West 62 feet;
- 70) thence South 58°48'52" West 61 feet;
- 71) thence South 31°46'43" West 127 feet;
- 72) thence South 16°39'46" West 148 feet;
- 73) thence South 27°01'21" West 191 feet;
- 74) thence South 30°09'11" West 205 feet;
- 75) thence South 29°48'03" West 195 feet;
- 76) thence South 30°15'52" West 200 feet;
- 77) thence South 32°33'38" West 190 feet;
- 78) thence South 41°43'31" West 218 feet;
- 79) thence South 50°00'06" West 183 feet;
- 80) thence South 53°46'47" West 205 feet;
- 81) thence South 64°58'10" West 202 feet;
- 82) thence South 81°02'59" West 200 feet;

EXHIBIT A

March 20, 1996

- 83) thence North 88°32'44" West 201 feet;
- 84) thence North 82°01'28" West 194 feet;
- 85) thence North 81°45'38" West 207 feet;
- 86) thence North 86°37'33" West 200 feet;
- 87) thence North 81°15'46" West 204 feet;
- 88) thence North 82°43'57" West 197 feet;
- 89) thence North 78°59'46" West 200 feet;
- 90) thence North 67°31'56" West 205 feet;
- 91) thence North 50°28'24" West 195 feet;
- 92) thence North 38°33'01" West 209 feet;
- 93) thence North 28°44'25" West 207 feet;
- 94) thence North 38°54'40" West 194 feet;
- 95) thence North 54°39'43" West 199 feet;
- 96) thence North 77°30'54" West 197 feet;
- 97) thence South 83°16'16" West 200 feet;
- 98) thence South 77°53'12" West 219 feet;
- 99) thence South 80°37'15" West 181 feet;
- 100) thence South 83°18'23" West 185 feet;
- 101) thence South 86°06'36" West 216 feet;
- 102) thence South 87°19'17" West 201 feet;
- 103) thence North 82°17'53" West 202 feet;
- 104) thence North 72°06'18" West 198 feet;
- 105) thence North 55°16'55" West 210 feet;
- 106) thence North 33°55'58" West 202 feet;
- 107) thence North 36°25'02" West 200 feet;
- 108) thence North 45°02'38" West 201 feet;
- 109) thence North 57°38'13" West 200 feet;
- 110) thence North 74°14'57" West 212 feet;
- 111) thence North 82°37'06" West 191 feet;
- 112) thence South 85°09'31" West 196 feet;
- 113) thence South 83°01'41" West 206 feet;
- 114) thence South 89°17'10" West 217 feet;
- 115) thence North 77°17'14" West 188 feet;
- 116) thence North 61°18'03" West 197 feet;
- 117) thence North 53°09'28" West 208 feet;
- 118) thence North 75°48'05" West 202 feet;
- 119) thence South 82°27'24" West 201 feet;
- 120) thence South 67°33'53" West 200 feet;
- 121) thence South 46°02'10" West 194 feet;
- 122) thence South 15°33'21" West 201 feet;
- 123) thence South 08°13'26" West 207 feet;
- 124) thence South 28°25'20" West 106 feet;
- 125) thence South 43°54'36" West 101 feet;
- 126) thence South 80°53'09" West 106 feet;
- 127) thence North 76°48'39" West 97 feet;

CALENDAR PAGE 240
PRELIMINARY
MINUTE PAGE
FOR STUDY ONLY

EXHIBIT A

March 20, 1996

- 128) thence North 80°05'29" West 108 feet;
- 129) thence South 80°46'55" West 106 feet;
- 130) thence South 52°43'55" West 107 feet;
- 131) thence South 12°02'06" West 102 feet;
- 132) thence South 18°30'52" East 201 feet;
- 133) thence South 28°36'37" East 201 feet;
- 134) thence South 18°35'58" East 196 feet;
- 135) thence South 07°36'22" East 71 feet;
- 136) thence South 05°33'59" West 55 feet;
- 137) thence South 10°55'43" West 44 feet;
- 138) thence South 23°54'35" West 51 feet;
- 139) thence South 36°50'23" West 48 feet;
- 140) thence South 53°28'00" West 58 feet;
- 141) thence South 69°55'46" West 95 feet;
- 142) thence South 85°59'39" West 189 feet;
- 143) thence South 84°06'19" West 208 feet;
- 144) thence South 77°54'30" West 103 feet;
- 145) thence South 63°04'07" West 103 feet;
- 146) thence South 37°42'11" West 111 feet;
- 147) thence South 17°26'00" West 97 feet;
- 148) thence South 04°51'21" East 198 feet;
- 149) thence South 15°40'39" East 216 feet;
- 150) thence South 06°21'37" East 107 feet;
- 151) thence South 07°53'20" West 88 feet;
- 152) thence South 20°58'29" West 114 feet;
- 153) thence South 38°00'20" West 83 feet;
- 154) thence South 59°50'14" West 194 feet;
- 155) thence South 61°54'55" West 210 feet;
- 156) thence South 33°10'42" West 35 feet;
- 157) thence South 16°43'22" West 43 feet;
- 158) thence South 04°54'28" East 56 feet;
- 159) thence South 15°10'56" East 76 feet;
- 160) thence South 17°57'22" East 202 feet;
- 161) thence South 03°37'04" West 105 feet;
- 162) thence South 15°37'44" West 97 feet;
- 163) thence South 27°12'33" West 98 feet;
- 164) thence South 49°11'53" West 107 feet;
- 165) thence South 79°18'46" West 206 feet;
- 166) thence South 75°56'29" West 196 feet;
- 167) thence South 71°17'36" West 194 feet;
- 168) thence South 71°10'03" West 207 feet;
- 169) thence South 70°50'46" West 192 feet;
- 170) thence South 70°34'16" West 209 feet;
- 171) thence South 69°02'32" West 204 feet;
- 172) thence South 68°48'52" West 197 feet;

CALENDAR PAGE	241
MINUTE PAGE	PRELIMINARY 929
FOR STUDY ONLY	

EXHIBIT A

March 20, 1996

- 173) thence South 73°11'46" West 200 feet;
- 174) thence South 69°48'34" West 200 feet;
- 175) thence South 67°54'57" West 201 feet;
- 176) thence South 77°56'06" West 201 feet;
- 177) thence South 70°22'08" West 202 feet;
- 178) thence South 76°32'20" West 201 feet;
- 179) thence South 81°31'05" West 204 feet;
- 180) thence North 85°06'51" West 205 feet;
- 181) thence North 75°17'08" West 202 feet;
- 182) thence North 72°33'38" West 86 feet;
- 183) thence North 68°50'46" West 116 feet;
- 184) thence North 84°10'21" West 67 feet;
- 185) thence South 80°31'35" West 76 feet;
- 186) thence South 68°22'00" West 65 feet;
- 187) thence South 54°55'53" West 106 feet;
- 188) thence South 38°50'06" West 96 feet;
- 189) thence South 31°42'07" West 98 feet;
- 190) thence South 23°06'10" West 103 feet;
- 191) thence South 09°22'25" West 86 feet;
- 192) thence South 02°16'49" West 112 feet;
- 193) thence South 04°28'26" East 193 feet;
- 194) thence South 02°35'44" East 208 feet;
- 195) thence South 04°12'59" West 85 feet;
- 196) thence South 18°23'34" West 119 feet;
- 197) thence South 37°00'30" West 97 feet;
- 198) thence South 44°53'12" West 106 feet;
- 199) thence South 62°42'54" West 100 feet;
- 200) thence South 82°40'06" West 105 feet;
- 201) thence South 88°43'26" West 201 feet;
- 202) thence South 80°41'38" West 200 feet;
- 203) thence South 74°47'30" West 201 feet;
- 204) thence South 81°24'05" West 202 feet;
- 205) thence South 89°14'15" West 202 feet;
- 206) thence North 80°06'29" West 202 feet;
- 207) thence North 74°24'21" West 201 feet;
- 208) thence North 73°28'20" West 200 feet;
- 209) thence North 78°19'47" West 200 feet;
- 210) thence North 80°44'55" West 200 feet;
- 211) thence North 78°05'42" West 200 feet;
- 212) thence North 79°52'38" West 200 feet;
- 213) thence North 80°36'40" West 201 feet;
- 214) thence South 83°53'01" West 264 feet;
- 215) thence South 85°40'42" West 133 feet;
- 216) thence North 89°37'10" West 192 feet;
- 217) thence South 82°41'14" West 104 feet;

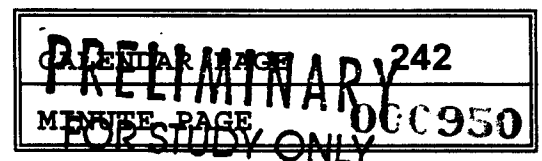


EXHIBIT A

March 20, 1996

- 218) thence South 81°39'53" West 62 feet;
- 219) thence South 50°05'51" West 25 feet;
- 220) thence South 38°03'33" West 24 feet;
- 221) thence South 28°07'13" West 27 feet;
- 222) thence South 04°38'04" West 26 feet;
- 223) thence South 08°49'33" East 49 feet;
- 224) thence South 23°57'37" East 53 feet;
- 225) thence South 38°14'30" East 49 feet;
- 226) thence South 46°01'59" East 92 feet;
- 227) thence South 27°20'17" East 63 feet;
- 228) thence South 02°28'51" East 28 feet;
- 229) thence South 18°41'20" West 26 feet;
- 230) thence South 33°43'06" West 30 feet;
- 231) thence South 46°12'34" West 176 feet;
- 232) thence South 49°32'06" West 86 feet;
- 233) thence South 42°06'27" West 105 feet;
- 234) thence South 40°14'09" West 133 feet;
- 235) thence South 54°50'17" West 76 feet;
- 236) thence South 33°38'29" West 80 feet;
- 237) thence South 55°50'20" West 59 feet;
- 238) thence South 75°39'01" West 66 feet;
- 239) thence South 60°13'44" West 42 feet;
- 240) thence South 45°25'52" West 50 feet;
- 241) thence South 81°12'06" West 115 feet;
- 242) thence South 78°43'57" West 190 feet;
- 243) thence South 76°20'35" West 112 feet;
- 244) thence South 60°53'14" West 86 feet;
- 245) thence South 01°07'12" East 99 feet;
- 246) thence South 33°21'31" East 158 feet,

to a line offset 65 feet northerly of the centerline of the Pescadero Reclamation District No. 2058 levee along the southerly bank of Paradise Cut, as determined by said 1993 aerial survey, said line offset 65 feet being the northerly line of the strip of land, one hundred and thirty feet wide, granted to Pescadero Reclamation District No. 2058 as described in Book "A", Volume 491 of Deeds at Page 374; thence easterly along said line offset 65 feet northerly of the centerline of the Pescadero Reclamation District No. 2058 levee along the southerly bank of Paradise Cut, as determined by said 1993 aerial survey, the following three hundred and twenty five (325) courses:

- 1) South 81°24'33" East 452 feet;
- 2) thence South 83°21'07" East 115 feet;
- 3) thence South 83°22'09" East 246 feet;
- 4) thence South 83°10'49" East 224 feet;
- 5) thence South 78°42'13" East 278 feet;
- 6) thence South 80°50'28" East 281 feet;
- 7) thence South 84°45'27" East 265 feet;

CALENDAR PAGE	243
MINUTE PAGE	PRELIMINARY 951

FOR STUDY ONLY

EXHIBIT A

March 20, 1996

- 8) thence South 87°52'00" East 242 feet;
- 9) thence North 83°25'32" East 241 feet;
- 10) thence North 76°56'44" East 229 feet;
- 11) thence North 70°02'34" East 215 feet;
- 12) thence North 67°34'02" East 221 feet;
- 13) thence North 69°35'44" East 179 feet;
- 14) thence North 74°57'06" East 201 feet;
- 15) thence North 72°59'26" East 276 feet;
- 16) thence North 74°01'26" East 244 feet;
- 17) thence North 74°14'50" East 94 feet;
- 18) thence North 74°14'50" East 83 feet;
- 19) thence North 74°14'50" East 65 feet;
- 20) thence North 73°29'04" East 245 feet;
- 21) thence North 73°53'44" East 160 feet;
- 22) thence North 73°53'44" East 88 feet;
- 23) thence North 73°53'44" East 1 feet;
- 24) thence North 74°40'39" East 300 feet;
- 25) thence North 74°38'17" East 288 feet;
- 26) thence North 74°29'17" East 241 feet;
- 27) thence North 71°17'19" East 125 feet;
- 28) thence North 71°17'19" East 52 feet;
- 29) thence North 71°17'19" East 44 feet;
- 30) thence North 69°08'38" East 228 feet;
- 31) thence North 72°18'52" East 169 feet;
- 32) thence North 77°05'12" East 38 feet;
- 33) thence North 77°05'12" East 80 feet;
- 34) thence North 77°05'12" East 101 feet;
- 35) thence North 79°37'43" East 192 feet;
- 36) thence South 88°57'17" East 212 feet;
- 37) thence South 79°15'26" East 200 feet;
- 38) thence South 77°22'47" East 112 feet;
- 39) thence South 77°22'46" East 95 feet;
- 40) thence South 74°56'42" East 220 feet;
- 41) thence South 72°48'33" East 196 feet;
- 42) thence South 73°45'52" East 178 feet;
- 43) thence South 72°03'59" East 177 feet;
- 44) thence South 73°58'27" East 216 feet;
- 45) thence South 71°20'27" East 157 feet;
- 46) thence South 73°19'33" East 219 feet;
- 47) thence South 71°12'10" East 224 feet;
- 48) thence South 73°37'34" East 111 feet;
- 49) thence South 74°21'56" East 182 feet;
- 50) thence South 77°19'36" East 165 feet;
- 51) thence South 76°15'05" East 143 feet;
- 52) thence South 73°17'14" East 166 feet;

CALENDAR PAGE 244
MINUTE PAGE 352
PRELIMINARY
FOR STUDY ONLY

EXHIBIT A

March 20, 1996

- 53) thence South 73°11'16" East 133 feet;
- 54) thence South 72°29'49" East 160 feet;
- 55) thence South 74°03'59" East 273 feet;
- 56) thence South 73°19'11" East 344 feet;
- 57) thence South 74°01'09" East 362 feet;
- 58) thence South 72°47'59" East 242 feet;
- 59) thence South 73°36'52" East 142 feet;
- 60) thence South 73°31'15" East 77 feet;
- 61) thence South 79°29'17" East 64 feet;
- 62) thence South 71°39'16" East 86 feet;
- 63) thence South 74°13'34" East 81 feet;
- 64) thence South 68°18'56" East 108 feet;
- 65) thence South 72°34'16" East 130 feet;
- 66) thence South 72°46'43" East 191 feet;
- 67) thence South 72°34'31" East 193 feet;
- 68) thence South 71°32'14" East 176 feet;
- 69) thence South 70°47'16" East 124 feet;
- 70) thence South 72°44'34" East 109 feet;
- 71) thence South 72°31'54" East 92 feet;
- 72) thence South 77°05'43" East 41 feet;
- 73) thence South 73°52'09" East 46 feet;
- 74) thence South 70°38'34" East 46 feet;
- 75) thence South 67°24'59" East 45 feet;
- 76) thence South 65°04'45" East 21 feet;
- 77) thence South 63°16'53" East 36 feet;
- 78) thence South 59°06'12" East 37 feet;
- 79) thence South 54°55'30" East 37 feet;
- 80) thence South 50°44'49" East 37 feet;
- 81) thence South 46°34'07" East 37 feet;
- 82) thence South 42°44'23" East 30 feet;
- 83) thence South 41°14'46" East 56 feet;
- 84) thence South 46°21'42" East 47 feet;
- 85) thence South 52°31'49" East 54 feet;
- 86) thence South 48°32'56" East 28 feet;
- 87) thence South 53°13'50" East 22 feet;
- 88) thence South 64°22'16" East 13 feet;
- 89) thence South 73°47'34" East 33 feet;
- 90) thence South 67°51'09" East 27 feet;
- 91) thence South 61°04'15" East 28 feet;
- 92) thence South 54°17'22" East 28 feet;
- 93) thence South 47°30'29" East 28 feet;
- 94) thence South 40°43'35" East 26 feet;
- 95) thence South 36°24'42" East 4 feet;
- 96) thence South 43°21'31" East 262 feet;
- 97) thence South 42°21'32" East 151 feet;

CALENDAR PAGE 245
PRELIMINARY 0953
MINUTE PAGE
FOR STUDY ONLY

EXHIBIT A

March 20, 1996

- 98) thence South 39°03'53" East 131 feet;
- 99) thence South 38°00'29" East 70 feet;
- 100) thence South 34°37'27" East 116 feet;
- 101) thence South 33°34'50" East 109 feet;
- 102) thence South 32°56'18" East 123 feet;
- 103) thence South 32°43'59" East 109 feet;
- 104) thence South 32°49'10" East 198 feet;
- 105) thence South 32°55'43" East 147 feet;
- 106) thence South 30°12'10" East 119 feet;
- 107) thence South 28°12'45" East 53 feet;
- 108) thence South 24°07'23" East 60 feet;
- 109) thence South 24°47'41" East 67 feet;
- 110) thence South 24°49'42" East 102 feet;
- 111) thence South 25°32'17" East 108 feet;
- 112) thence South 25°07'29" East 111 feet;
- 113) thence South 25°33'46" East 86 feet;
- 114) thence South 21°54'22" East 78 feet;
- 115) thence South 23°27'39" East 98 feet;
- 116) thence South 22°23'50" East 173 feet;
- 117) thence South 25°37'10" East 77 feet;
- 118) thence South 22°31'19" East 83 feet;
- 119) thence South 27°03'45" East 103 feet;
- 120) thence South 20°31'30" East 65 feet;
- 121) thence South 24°04'32" East 165 feet;
- 122) thence South 24°02'50" East 160 feet;
- 123) thence South 22°50'10" East 143 feet;
- 124) thence South 21°49'31" East 127 feet;
- 125) thence South 24°53'35" East 93 feet;
- 126) thence South 25°10'21" East 92 feet;
- 127) thence South 26°24'39" East 95 feet;
- 128) thence South 24°39'19" East 95 feet;
- 129) thence South 28°43'08" East 77 feet;
- 130) thence South 32°26'34" East 59 feet;
- 131) thence South 33°03'48" East 61 feet;
- 132) thence South 34°37'50" East 64 feet;
- 133) thence South 41°44'33" East 57 feet;
- 134) thence South 44°18'51" East 67 feet;
- 135) thence South 50°19'00" East 71 feet;
- 136) thence South 55°36'40" East 73 feet;
- 137) thence South 59°48'23" East 72 feet;
- 138) thence South 63°27'07" East 71 feet;
- 139) thence South 68°52'04" East 75 feet;
- 140) thence South 75°07'41" East 81 feet;
- 141) thence South 74°11'32" East 93 feet;
- 142) thence South 79°46'31" East 84 feet;

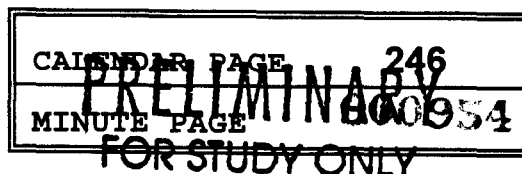


EXHIBIT A

March 20, 1996

- 143) thence South 80°01'54" East 56 feet;
- 144) thence South 80°01'28" East 32 feet;
- 145) thence South 86°58'24" East 56 feet;
- 146) thence North 85°02'08" East 84 feet;
- 147) thence North 85°36'21" East 72 feet;
- 148) thence North 80°13'40" East 108 feet;
- 149) thence North 77°15'20" East 100 feet;
- 150) thence North 73°13'06" East 101 feet;
- 151) thence North 68°54'18" East 163 feet;
- 152) thence North 68°27'15" East 26 feet;
- 153) thence North 68°11'56" East 33 feet;
- 154) thence North 71°59'33" East 126 feet;
- 155) thence North 72°32'05" East 148 feet;
- 156) thence North 72°06'10" East 199 feet;
- 157) thence North 73°14'02" East 166 feet;
- 158) thence North 69°58'52" East 106 feet;
- 159) thence North 74°19'55" East 60 feet;
- 160) thence North 73°22'46" East 29 feet;
- 161) thence North 80°37'00" East 53 feet;
- 162) thence North 81°50'23" East 43 feet;
- 163) thence North 85°22'26" East 43 feet;
- 164) thence North 88°50'49" East 43 feet;
- 165) thence South 87°24'40" East 185 feet;
- 166) thence South 87°39'25" East 24 feet;
- 167) thence South 84°34'53" East 40 feet;
- 168) thence South 80°49'00" East 40 feet;
- 169) thence South 77°03'07" East 40 feet;
- 170) thence South 73°17'15" East 40 feet;
- 171) thence South 69°31'22" East 40 feet;
- 172) thence South 65°45'29" East 40 feet;
- 173) thence South 61°59'37" East 39 feet;
- 174) thence South 61°02'28" East 31 feet;
- 175) thence South 57°40'34" East 40 feet;
- 176) thence South 53°54'11" East 40 feet;
- 177) thence South 50°07'48" East 40 feet;
- 178) thence South 46°21'26" East 43 feet;
- 179) thence South 36°55'53" East 52 feet;
- 180) thence South 34°04'11" East 50 feet;
- 181) thence South 31°09'03" East 50 feet;
- 182) thence South 28°13'55" East 49 feet;
- 183) thence South 25°54'20" East 15 feet;
- 184) thence South 23°43'06" East 44 feet;
- 185) thence South 20°23'38" East 45 feet;
- 186) thence South 17°04'11" East 45 feet;
- 187) thence South 13°44'43" East 45 feet;

CALL NUMBER PAGE 247
PRELIMINARY 955
MINUTE PAGE
FOR STUDY ONLY

EXHIBIT A

March 20, 1996

- 188) thence South 10°25'16" East 45 feet;
- 189) thence South 07°05'48" East 41 feet;
- 190) thence South 09°15'09" East 138 feet;
- 191) thence South 08°35'22" East 454 feet;
- 192) thence South 07°55'23" East 42 feet;
- 193) thence South 10°21'21" East 49 feet;
- 194) thence South 12°59'45" East 48 feet;
- 195) thence South 15°38'08" East 48 feet;
- 196) thence South 18°16'32" East 48 feet;
- 197) thence South 20°54'55" East 49 feet;
- 198) thence South 22°11'30" East 51 feet;
- 199) thence South 20°16'31" East 66 feet;
- 200) thence South 18°08'26" East 67 feet;
- 201) thence South 14°48'24" East 87 feet;
- 202) thence South 19°58'50" East 66 feet;
- 203) thence South 18°21'53" East 5 feet;
- 204) thence South 22°10'48" East 17 feet;
- 205) thence South 28°05'54" East 16 feet;
- 206) thence South 34°01'00" East 16 feet;
- 207) thence South 39°56'07" East 16 feet;
- 208) thence South 45°51'13" East 16 feet;
- 209) thence South 51°46'20" East 16 feet;
- 210) thence South 57°41'26" East 16 feet;
- 211) thence South 63°36'32" East 16 feet;
- 212) thence South 69°31'39" East 16 feet;
- 213) thence South 72°55'27" East 33 feet;
- 214) thence South 68°15'03" East 34 feet;
- 215) thence South 63°34'39" East 34 feet;
- 216) thence South 58°54'15" East 33 feet;
- 217) thence South 57°14'28" East 390 feet;
- 218) thence South 62°11'43" East 2 feet;
- 219) thence South 58°56'43" East 29 feet;
- 220) thence South 53°11'21" East 30 feet;
- 221) thence South 47°25'58" East 30 feet;
- 222) thence South 41°40'36" East 30 feet;
- 223) thence South 35°55'13" East 31 feet;
- 224) thence South 28°56'55" East 4 feet;
- 225) thence South 32°24'51" East 16 feet;
- 226) thence South 38°45'07" East 14 feet;
- 227) thence South 45°05'23" East 14 feet;
- 228) thence South 51°25'38" East 14 feet;
- 229) thence South 57°45'54" East 14 feet;
- 230) thence South 64°06'09" East 14 feet;
- 231) thence South 70°26'25" East 14 feet;
- 232) thence South 76°46'40" East 17 feet;

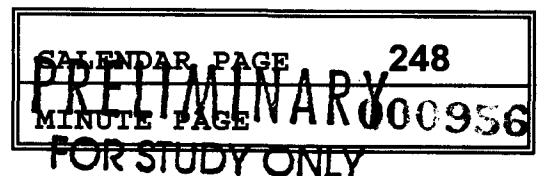


EXHIBIT A

March 20, 1996

- 233) thence South 77°59'20" East 21 feet;
- 234) thence South 74°57'29" East 39 feet;
- 235) thence South 71°06'03" East 40 feet;
- 236) thence South 67°14'37" East 41 feet;
- 237) thence South 60°26'58" East 110 feet;
- 238) thence South 58°56'55" East 11 feet;
- 239) thence South 60°44'30" East 44 feet;
- 240) thence South 63°37'46" East 44 feet;
- 241) thence South 66°31'01" East 44 feet;
- 242) thence South 69°24'17" East 43 feet;
- 243) thence South 73°13'19" East 146 feet;
- 244) thence South 74°43'48" East 405 feet;
- 245) thence South 74°24'39" East 458 feet;
- 246) thence South 74°56'59" East 272 feet;
- 247) thence South 73°49'29" East 8 feet;
- 248) thence South 71°22'15" East 37 feet;
- 249) thence South 67°13'58" East 37 feet;
- 250) thence South 63°05'41" East 37 feet;
- 251) thence South 58°57'25" East 37 feet;
- 252) thence South 54°49'08" East 40 feet;
- 253) thence South 46°31'25" East 58 feet;
- 254) thence South 44°28'17" East 173 feet;
- 255) thence South 42°51'27" East 6 feet;
- 256) thence South 40°05'13" East 32 feet;
- 257) thence South 35°12'05" East 33 feet;
- 258) thence South 30°18'58" East 33 feet;
- 259) thence South 25°25'51" East 33 feet;
- 260) thence South 20°32'44" East 33 feet;
- 261) thence South 15°39'36" East 33 feet;
- 262) thence South 10°46'29" East 33 feet;
- 263) thence South 05°53'22" East 29 feet;
- 264) thence South 08°57'43" East 102 feet;
- 265) thence South 08°27'36" East 215 feet;
- 266) thence South 07°15'51" East 190 feet;
- 267) thence South 11°30'33" East 22 feet;
- 268) thence South 15°30'12" East 27 feet;
- 269) thence South 19°50'35" East 26 feet;
- 270) thence South 24°10'57" East 26 feet;
- 271) thence South 28°31'19" East 26 feet;
- 272) thence South 32°51'41" East 26 feet;
- 273) thence South 37°12'04" East 32 feet;
- 274) thence South 31°42'44" East 149 feet;
- 275) thence South 31°40'07" East 242 feet;
- 276) thence South 27°23'25" East 18 feet;
- 277) thence South 31°46'29" East 21 feet;

CALENDAR PAGE 249
PRELIMINARY
MINUTE PAGE 0000957
FOR STUDY ONLY

EXHIBIT A

March 20, 1996

- 278) thence South 37°00'01" East 20 feet;
- 279) thence South 42°13'34" East 20 feet;
- 280) thence South 47°27'06" East 20 feet;
- 281) thence South 52°40'38" East 20 feet;
- 282) thence South 57°54'11" East 22 feet;
- 283) thence South 60°21'27" East 65 feet;
- 284) thence South 61°42'37" East 109 feet;
- 285) thence South 56°26'06" East 140 feet;
- 286) thence South 56°14'09" East 15 feet;
- 287) thence South 52°20'04" East 31 feet;
- 288) thence South 47°06'53" East 32 feet;
- 289) thence South 41°53'43" East 32 feet;
- 290) thence South 36°40'32" East 30 feet;
- 291) thence South 34°16'03" East 65 feet;
- 292) thence South 32°18'27" East 141 feet;
- 293) thence South 31°40'39" East 201 feet;
- 294) thence South 34°36'12" East 214 feet;
- 295) thence South 36°35'20" East 80 feet;
- 296) thence South 36°38'37" East 26 feet;
- 297) thence South 40°13'56" East 66 feet;
- 298) thence South 40°19'51" East 137 feet;
- 299) thence South 42°38'03" East 183 feet;
- 300) thence South 41°28'36" East 370 feet;
- 301) thence South 41°06'57" East 249 feet;
- 302) thence South 43°45'50" East 5 feet;
- 303) thence South 46°03'10" East 33 feet;
- 304) thence South 49°48'50" East 32 feet;
- 305) thence South 53°34'30" East 32 feet;
- 306) thence South 57°20'10" East 32 feet;
- 307) thence South 61°25'32" East 73 feet;
- 308) thence South 65°10'23" East 233 feet;
- 309) thence South 64°55'54" East 257 feet;
- 310) thence South 64°40'02" East 157 feet;
- 311) thence South 61°29'58" East 150 feet;
- 312) thence South 55°08'44" East 33 feet;
- 313) thence South 49°17'17" East 36 feet;
- 314) thence South 35°04'36" East 52 feet;
- 315) thence South 23°58'36" East 48 feet;
- 316) thence South 07°33'40" East 142 feet;
- 317) thence South 06°47'02" East 188 feet;
- 318) thence South 08°01'51" East 159 feet;
- 319) thence South 05°40'40" East 59 feet;
- 320) thence South 15°21'56" East 14 feet;
- 321) thence South 26°25'04" East 14 feet;
- 322) thence South 36°19'51" East 21 feet;

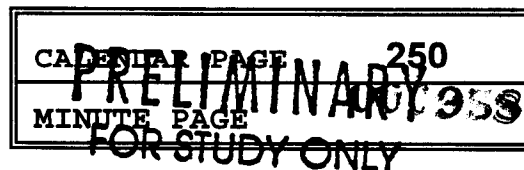


EXHIBIT A

March 20, 1996

- 323) thence South 49°39'13" East 31 feet;
- 324) thence South 52°33'31" East 37 feet;
- 325) thence South 55°41'33" East 107 feet,

more or less, to a point in the northwesterly line of Interstate Route No. 5 and 205, as shown on Sheet No. 26 of the Interstate Route No. 5 and 205 Right of Way Map, on file with the State of California, Transportation Agency, Right of Way Department, Division of Highways, District 10 office in San Joaquin County; thence along said northwesterly line of Interstate Route No. 5 and 205, as shown on Sheet No. 26 and 27 of said Interstate Route No. 5 and 205 Right of Way Maps, the following three (3) courses:

- 1) North 74°15'30" East 87.00 feet;
- 2) thence North 74°15'30" East 187.46 feet;
- 3) thence North 47°58'03" East 892.16 feet,

to a point of intersection with the westerly prolongation of the northerly line of the levee easement, along the northerly bank of Paradise Cut, described in Volume 2414 of Official Records at Page 410, and as shown on Sheet No. 27 of said Interstate Route No. 5 and 205 Right of Way Maps; thence leaving said northwesterly line of Interstate Route No. 5 and 205, and continuing easterly along said northerly line of the levee easement, described in Volume 2414 of Official Records at Page 410, and the westerly prolongation thereof, South 53°42'15" East 553.45 feet, to the intersection of said northerly line of the levee easement with the easterly line of Interstate Route No. 5, as shown on Sheet No. 27 of said Interstate Route No. 5 and 205 Right of Way Maps; thence northerly along said easterly line of Interstate Route No. 5 and the southerly line of State Highway Route No. 120, as shown on Sheet No. 27 through 31, inclusive, of said Interstate Route No. 5 Right of Way Maps, the following thirty four (34) courses:

- 1) North 32°40'40" East 438.87 feet;
- 2) thence along a tangent curve to the right, having a radius of 2915.00 feet, through a central angle of 14°55'14";
- 3) thence North 46°45'25" East 91.60 feet;
- 4) thence North 46°45'21" East 806.98 feet;
- 5) thence North 47°58'03" East 1706.12 feet;
- 6) thence North 42°24'37" East 185.87 feet;
- 7) thence North 47°58'10" East 95.01 feet;
- 8) thence North 57°07'34" East 113.98 feet;
- 9) thence North 52°12'58" East 159.60 feet;
- 10) thence North 71°42'03" East 396.03 feet;
- 11) thence along a tangent curve to the left, having a radius of 970.00 feet, through a central angle of 15°16'53";
- 12) thence North 41°37'58" East 65.69 feet;
- 13) thence North 48°13'43" East 137.12 feet;
- 14) thence North 39°40'08" East 141.90 feet;
- 15) thence South 43°46'43" West 50.00 feet;
- 16) thence North 82°03'33" West 61.22 feet;

CALENDAR PAGE 251
MINUTE PAGE 0959
PRELIMINARY
FOR STUDY ONLY

EXHIBIT A

March 20, 1996

- 17) thence North 22°39'23" West 113.11 feet;
- 18) thence North 32°11'04" East 151.60 feet;
- 19) thence North 47°16'04" East 512.56 feet;
- 20) thence North 52°32'53" East 57.63 feet;
- 21) thence North 52°32'53" East 960.57 feet;
- 22) thence North 21°35'02" East 69.71 feet;
- 23) thence North 52°32'53" East 16.12 feet;
- 24) thence North 52°32'53" East 58.88 feet;
- 25) thence South 37°27'07" East 20.00 feet;
- 26) thence North 52°32'53" East 73.04 feet;
- 27) thence North 37°27'07" West 20.00 feet;
- 28) thence North 52°32'53" East 130.00 feet;
- 29) thence North 56°18'10" East 320.69 feet;
- 30) thence South 89°55'46" East 259.28 feet;
- 31) thence North 60°53'07" East 240.19 feet;
- 32) thence North 51°10'29" East 1173.41 feet;
- 33) thence North 56°35'28" East 680.86 feet;
- 34) thence North 64°49'25" East 158.92 feet

to a point on the north-south one-quarter (1/4) section line of Section 3, said Township 2 South, Range 6 East, as shown on Sheet No. 1 of the State Highway Route No. 120 Right of Way Map, on file with the State of California, Transportation Agency, Right of Way Department, Division of Highways, District 10 office in San Joaquin County; thence leaving said easterly line of Interstate Route No. 5 and said southerly line of State Highway Route No. 120, and continuing northerly along the north-south one-quarter (1/4) section line of said Section 3, North 00°38'54" East 418.74 feet, to a point in the southerly line of the existing City of Lathrop incorporation boundary as described in said Certificate of Filing, recorded on June 20, 1989 as Instrument Number 89055167, San Joaquin County Records; thence along the southerly and westerly lines of the existing City of Lathrop incorporation boundary, as described in said Certificate of Filing, the following nineteen (19) courses:

- 1) westerly along a non-tangent curve to the left, having a radius of 2033.00 feet and a radial bearing of South 14°55'47" East to the center of said curve, through a central angle of 3°08'38";
- 2) thence South 71°55'35" West 291.67 feet;
- 3) thence along a tangent curve to the right having a radius of 267.00 feet, through a central angle of 48°39'36";
- 4) thence northerly along a non-tangent curve to the left, having a radius of 124.00 feet and a radial bearing of North 62°18'02" West to the center of said curve, through a central angle of 72°17'22";
- 5) thence South 71°58'37" West 595.18 feet;
- 6) thence North 21°22'47" East 480.47 feet;
- 7) thence North 11°48'12" East 473.01 feet;
- 8) thence North 03°57'01" East 491.27 feet;
- 9) thence North 00°21'26" East 600.00 feet;

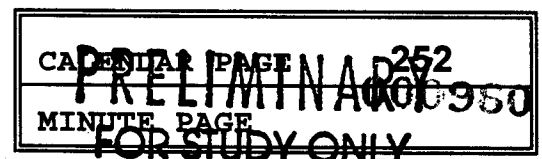


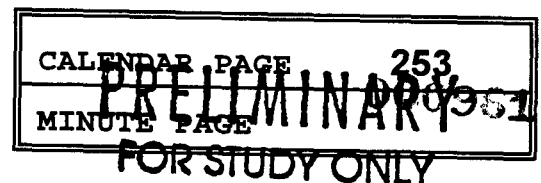
EXHIBIT A

March 20, 1996

- 10) thence North 01°03'41" East 338.18 feet;
- 11) thence North 07°25'33" East 462.21 feet;
- 12) thence along a tangent curve to the right, having a radius of 2978.00 feet, through a central angle of 8°35'10";
- 13) thence North 16°00'43" East 1458.33 feet;
- 14) thence North 16°03'44" East 1630.00 feet;
- 15) thence North 15°40'50" East 598.91 feet;
- 16) thence North 11°07'43" East 389.11 feet;
- 17) thence North 07°20'26" East 783.27 feet;
- 18) thence North 47°21'30" West 71.28 feet;
- 19) thence North 11°47'13" East 101.98 feet,

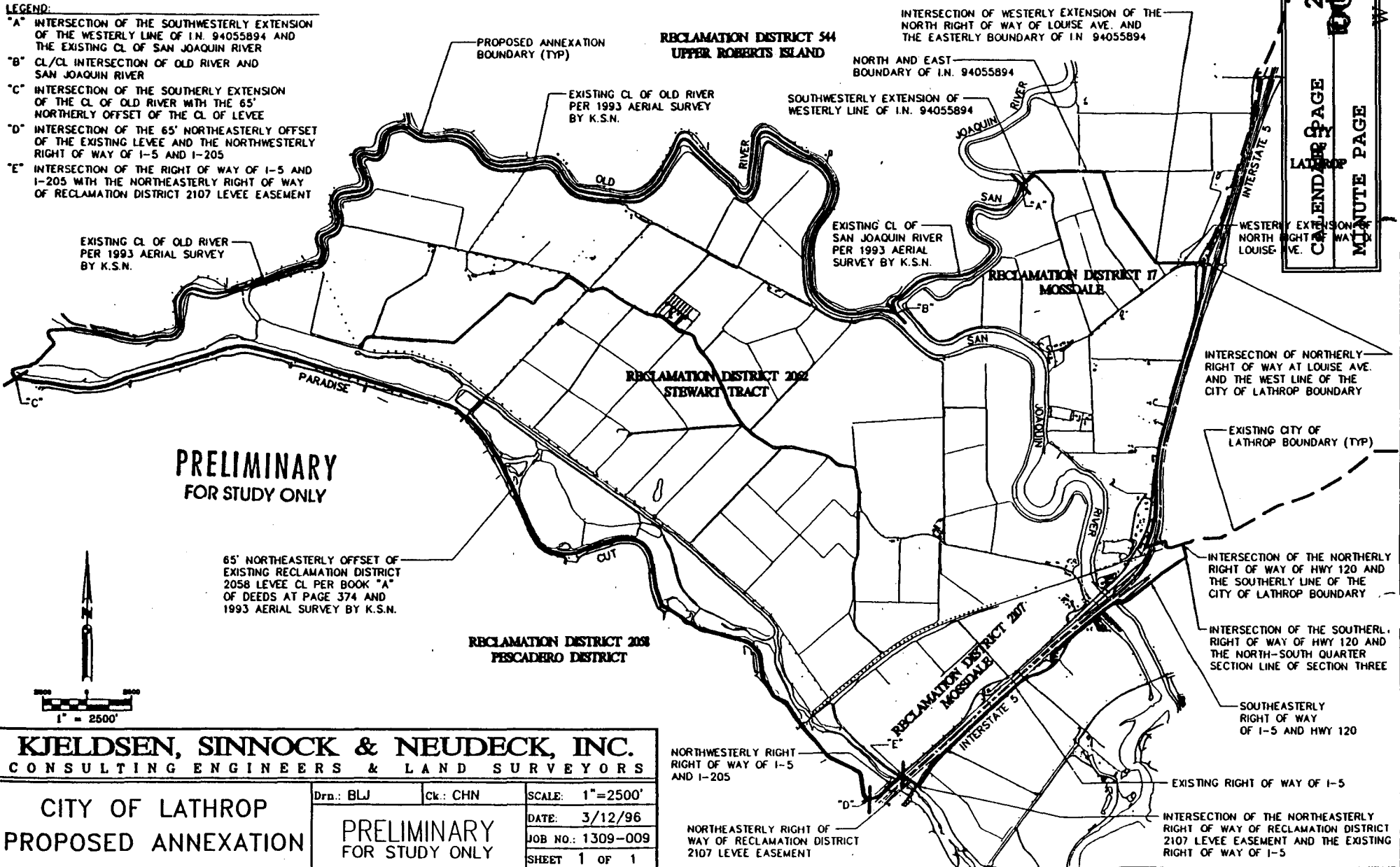
to said POINT OF BEGINNING. Containing 6,582 acres, more or less. Bearings and distances described herein are based on the California Coordinate System, Zone 3, NAD 1983. Distances described herein must be multiplied by 1.0000555 to obtain ground distances.

End of Description.



LEGEND:

- "A" INTERSECTION OF THE SOUTHWESTERLY EXTENSION OF THE WESTERLY LINE OF I.N. 94055894 AND THE EXISTING CL OF SAN JOAQUIN RIVER
- "B" CL/CL INTERSECTION OF OLD RIVER AND SAN JOAQUIN RIVER
- "C" INTERSECTION OF THE SOUTHERLY EXTENSION OF THE CL OF OLD RIVER WITH THE 65' NORTHERLY OFFSET OF THE CL OF LEVEE
- "D" INTERSECTION OF THE 65' NORTHEASTERLY OFFSET OF THE EXISTING LEVEE AND THE NORTHWESTERLY RIGHT OF WAY OF I-5 AND I-205
- "E" INTERSECTION OF THE RIGHT OF WAY OF I-5 AND I-205 WITH THE NORTHEASTERLY RIGHT OF WAY OF RECLAMATION DISTRICT 2107 LEVEE EASEMENT



**PRELIMINARY
FOR STUDY ONLY**

65' NORTHEASTERLY OFFSET OF EXISTING RECLAMATION DISTRICT 2058 LEVEE CL PER BOOK "A" OF DEEDS AT PAGE 374 AND 1993 AERIAL SURVEY BY K.S.N.

**RECLAMATION DISTRICT 208
PESCADERO DISTRICT**

**RECLAMATION DISTRICT 202
STEWART TRACT**

**RECLAMATION DISTRICT 544
UPPER ROBERTS ISLAND**

**RECLAMATION DISTRICT 17
MOSSDALE**

**RECLAMATION DISTRICT 207
MOSSDALE**

KJELDSSEN, SINNOCK & NEUDECK, INC.
CONSULTING ENGINEERS & LAND SURVEYORS

**CITY OF LATHROP
PROPOSED ANNEXATION**

Drn.: BLJ	Ck: CHN	SCALE: 1"=2500'
PRELIMINARY FOR STUDY ONLY		DATE: 3/12/96
		JOB NO.: 1309-009
		SHEET 1 OF 1

254 "B"
CITY OF LATHROP
CALENDAR PAGE
MINUTE PAGE

W 2400.192

NO TEXT ON THIS PAGE

CALENDAR PAGE	255
MINUTE PAGE	000963

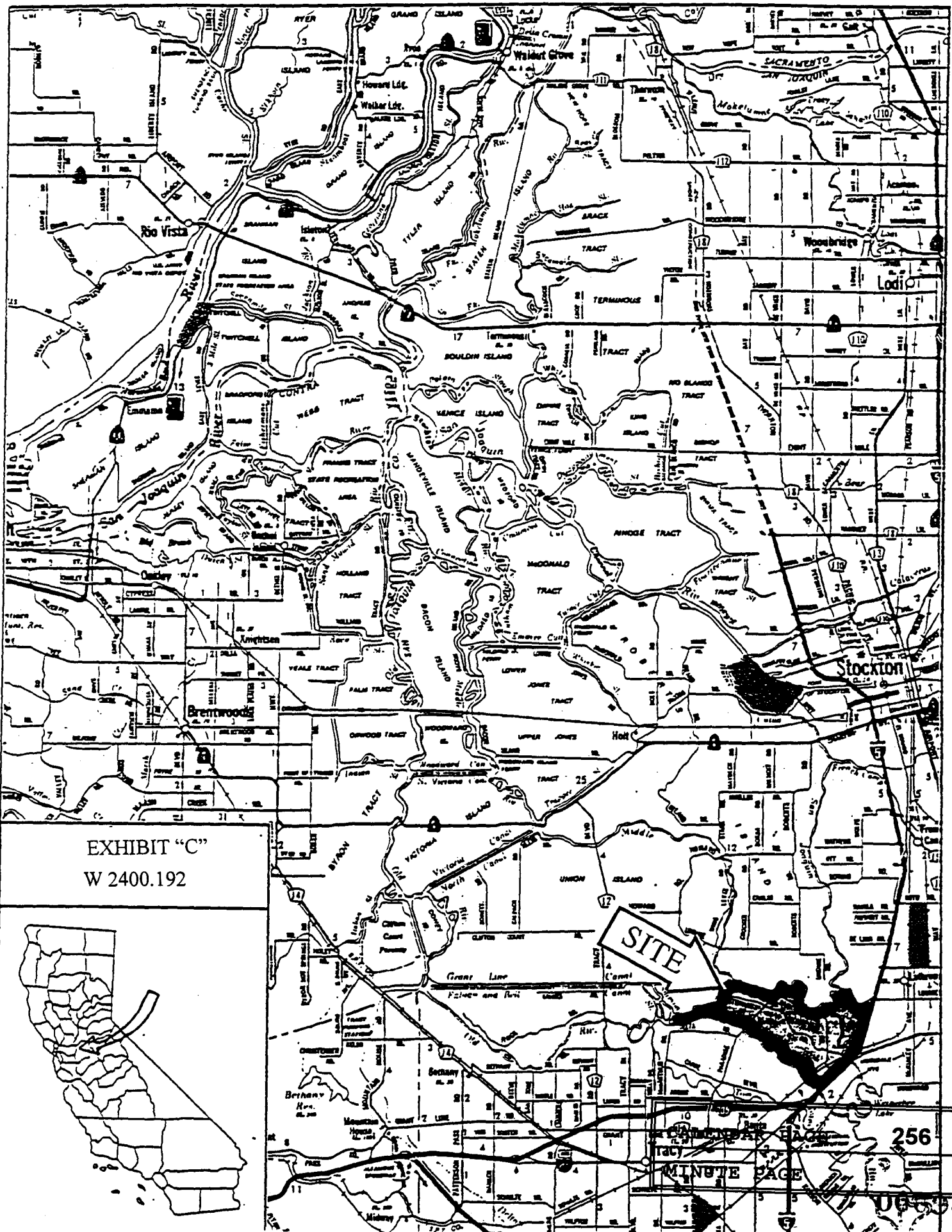


EXHIBIT "C"
W 2400.192



SITE

256
MINUTE PAGE