

MINUTE ITEM

This Calendar Item No. ~~C33~~ was approved as
Minute Item No. ~~33~~ by the California State Lands
Commission by a vote of ~~2~~ to ~~0~~ at its
~~2/27/96~~ meeting.

CALENDAR ITEM

C33

A 3

02/27/96

S 1

W 24995

J. Ludlow

PRC 7878

GENERAL LEASE - PUBLIC AGENCY USE

APPLICANT:

California Department of Transportation
District 3
P.O. Box 911
Marysville, California 95901

LOCATION:

2.27-acre, more or less, parcel of sovereign land located in the bed of the Feather
River on Highway 162, City of Oroville, Butte County.

EXHIBITS:

A. Vicinity and Site Map B. Location Map

AB 884:

08/01/96

RECOMMENDED

ACTION:

IT IS RECOMMENDED THAT THE COMMISSION:

CEQA

FINDING:

FIND THAT A NEGATIVE DECLARATION, (STATE CLEARINGHOUSE NUMBER
93082082) WAS PREPARED AND ADOPTED FOR THIS PROJECT BY THE
CALIFORNIA STATE DEPARTMENT OF TRANSPORTATION AND THE U.S.
DEPARTMENT OF TRANSPORTATION AND THAT THE COMMISSION HAS
REVIEWED AND CONSIDERED THE INFORMATION CONTAINED THEREIN.

CALENDAR PAGE	100
MINUTE PAGE	000246

CALENDAR ITEM NO. C33 (CONT'D)

SIGNIFICANT LANDS

INVENTORY FINDING:

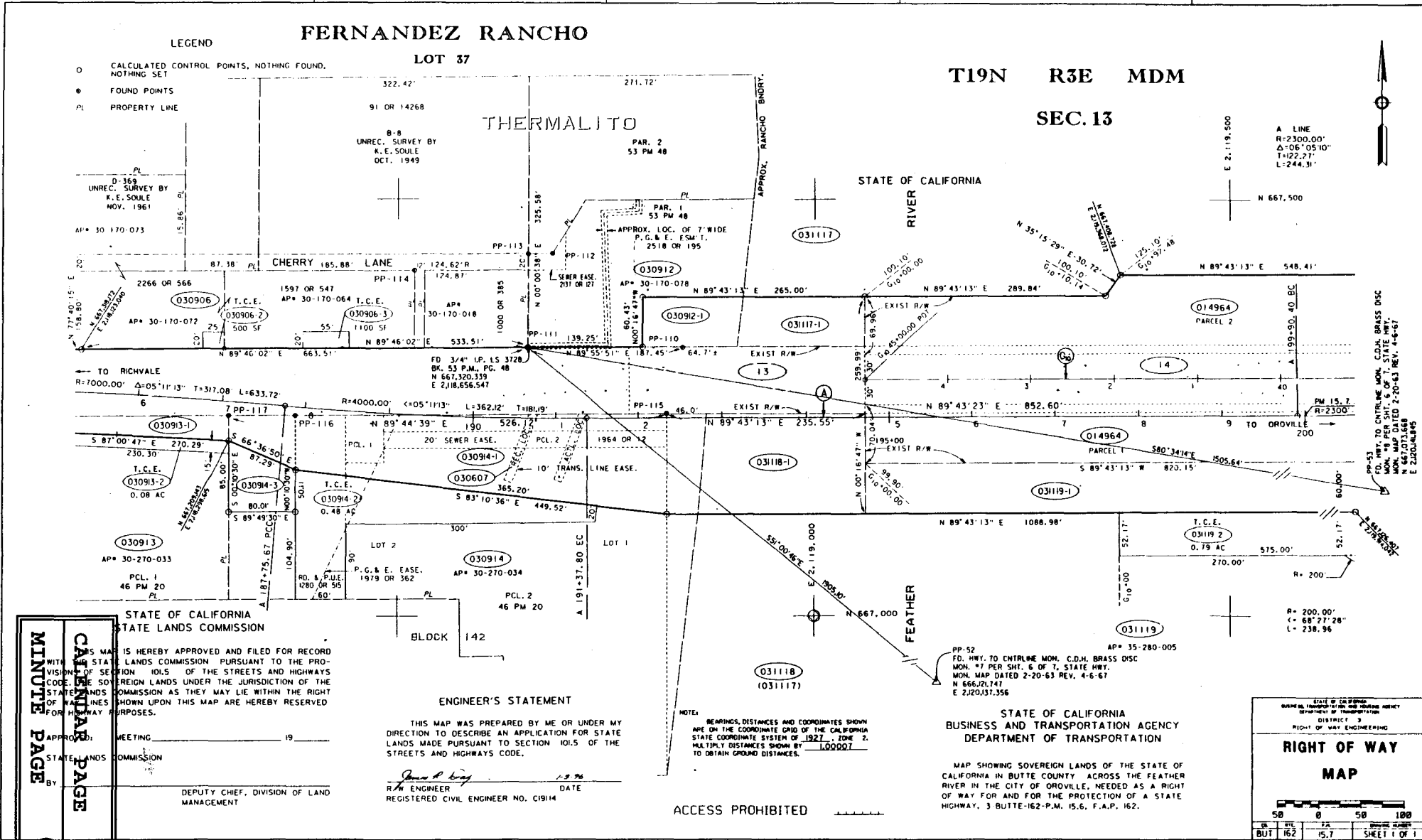
FIND THAT THIS ACTIVITY IS CONSISTENT WITH THE USE CLASSIFICATION DESIGNATED FOR THE LAND PURSUANT TO PUBLIC RESOURCES CODE SECTIONS 6370, ET SEQ.

AUTHORIZATION:

1. APPROVE THE MAP FILED BY THE CALIFORNIA DEPARTMENT OF TRANSPORTATION PURSUANT TO STREETS AND HIGHWAYS CODE SECTION 101.5, AS SHOWN ON EXHIBIT "A" ATTACHED AND BY REFERENCE MADE A PART HEREOF.

2. AUTHORIZE THE ISSUANCE OF A PUBLIC AGENCY LEASE TO THE CALIFORNIA DEPARTMENT OF TRANSPORTATION, DISTRICT 3, FOR AN INDEFINITE PERIOD FROM THE DATE THE LEASE IS APPROVED BY THE STATE LANDS COMMISSION FOR HIGHWAY PURPOSES ON THE LAND DESCRIBED ON EXHIBIT "A" ATTACHED AND BY REFERENCE MADE A PART HEREOF.

EXHIBIT "A"
W 24995



LEGEND

- CALCULATED CONTROL POINTS, NOTHING FOUND, NOTHING SET
- FOUND POINTS
- PL PROPERTY LINE

FERNANDEZ RANCHO

LOT 37

T19N R3E MDM

SEC. 13

THERMALITO

STATE OF CALIFORNIA

RIVER

FEATHER

ENGINEER'S STATEMENT

THIS MAP WAS PREPARED BY ME OR UNDER MY DIRECTION TO DESCRIBE AN APPLICATION FOR STATE LANDS MADE PURSUANT TO SECTION 101.5 OF THE STREETS AND HIGHWAYS CODE.

James P. King
R/W ENGINEER
REGISTERED CIVIL ENGINEER NO. C19114

DATE

ACCESS PROHIBITED

NOTE:
BEARINGS, DISTANCES AND COORDINATES SHOWN ARE ON THE COORDINATE GRID OF THE CALIFORNIA STATE COORDINATE SYSTEM OF 1927, ZONE 2. MULTIPLY DISTANCES SHOWN BY 1.00007 TO OBTAIN GROUND DISTANCES.

STATE OF CALIFORNIA
BUSINESS AND TRANSPORTATION AGENCY
DEPARTMENT OF TRANSPORTATION

MAP SHOWING SOVEREIGN LANDS OF THE STATE OF CALIFORNIA IN BUTTE COUNTY ACROSS THE FEATHER RIVER IN THE CITY OF OROVILLE, NEEDED AS A RIGHT OF WAY FOR AND FOR THE PROTECTION OF A STATE HIGHWAY, 3 BUTTE-162-P.M. 15.6, F.A.P. 162.

STATE OF CALIFORNIA
BUREAU OF TRANSPORTATION
DISTRICT 3
RIGHT OF WAY ENGINEERING

**RIGHT OF WAY
MAP**

MAP SHOWING SOVEREIGN LANDS OF THE STATE OF CALIFORNIA IN BUTTE COUNTY ACROSS THE FEATHER RIVER IN THE CITY OF OROVILLE, NEEDED AS A RIGHT OF WAY FOR AND FOR THE PROTECTION OF A STATE HIGHWAY, 3 BUTTE-162-P.M. 15.6, F.A.P. 162.

PROJECT SETUP POINTS: N 657000, E 219000

DATE	SHEET	PA	SHEET NUMBER
BUT 162	15.7		1 OF 1

MINUTE PAGE
CATERPILLAR PAGE
102
000248

11-22-95 ADDED LEGEND AND DATA COORDINATES.
11-28-95 ADDED YES TO HWY TO CENTERLINE MONTS.

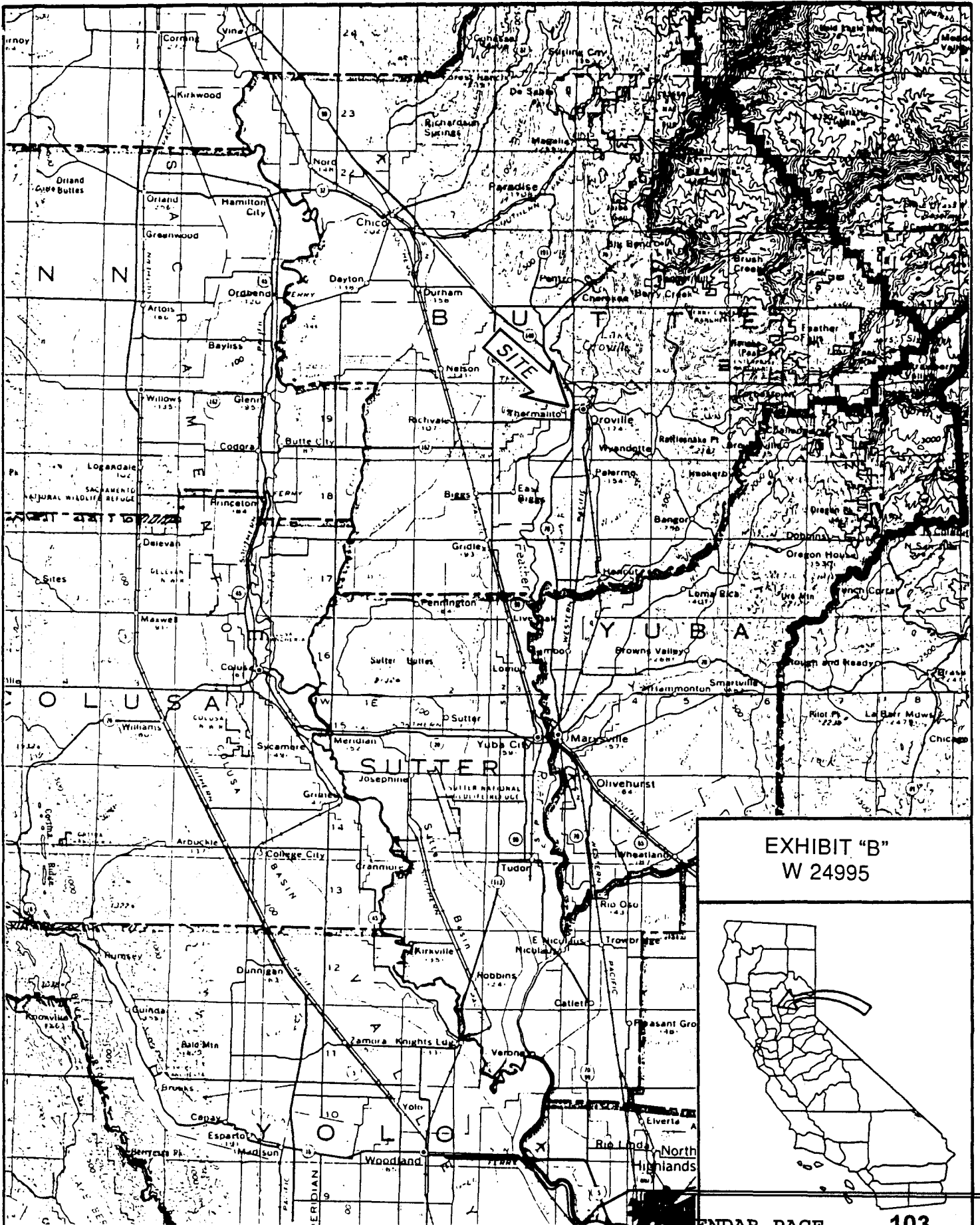


EXHIBIT "B"
W 24995

