

CALENDAR ITEM

C25

MINUTE ITEM  
This Calendar Item No. C25  
was approved as Minute Item  
No. 25 by the State Lands  
Commission by a vote of 3  
to 0 at its 5/26/94  
meeting

A 4  
S 1

05/26/94  
WP 6974  
Jones  
PRC 6974

TERMINATION OF MINERAL EXTRACTION LEASE PRC 6974  
AND ACCEPTANCE OF QUITCLAIM DEED

LESSEE:

Calaveras County Water District  
423 E. St. Charles Street  
San Andreas, California 95249

LOCATION:

Approximately 120 acres of patented mineral reserve school  
land NE of Murphys in portions of Section 36, T4N R14E, MDM,  
Calaveras County.

EXHIBITS:

A. Site Map.

B. Location Map.

AB 884:

N/A

RECOMMENDED

ACTION:

IT IS RECOMMENDED THAT THE COMMISSION:

CEQA

FINDING:

FIND THAT THE ACTIVITY IS EXEMPT FROM THE REQUIREMENTS OF  
THE CEQA PURSUANT TO 14 CAL. CODE REGS. 15061, BECAUSE THE  
ACTIVITY IS NOT A PROJECT AS DEFINED BY P.R.C. 21065 AND  
14 CAL. CODE REGS. 15378.

SIGNIFICANT LANDS

INVENTORY:

FIND THAT THIS ACTIVITY INVOLVES LANDS WHICH HAVE NOT BEEN  
IDENTIFIED AS POSSESSING SIGNIFICANT ENVIRONMENTAL VALUES  
PURSUANT TO P.R.C. 6370, ET SEQ. HOWEVER, THE COMMISSION  
HAS DECLARED THAT ALL TIDE AND SUBMERGED LANDS ARE  
"SIGNIFICANT" BY NATURE OF THEIR PUBLIC OWNERSHIP (AS  
OPPOSED TO "ENVIRONMENTAL SIGNIFICANT"). SINCE SUCH  
DECLARATION OF SIGNIFICANCE IS NOT BASED UPON THE

CALENDAR PAGE	122
MINUTE PAGE	1976

CALENDAR ITEM NO. C25 (CONT'D)

REQUIREMENTS AND CRITERIA OF P.R.C. 6370, ET SEQ., USE CLASSIFICATIONS FOR SUCH LANDS HAVE NOT BEEN DESIGNATED. THEREFORE, THE FINDING OF THE PROJECT'S CONSISTENCY WITH THE USE CLASSIFICATION AS REQUIRED BY 2 CAL. CODE REGS. 2954 IS NOT APPLICABLE.

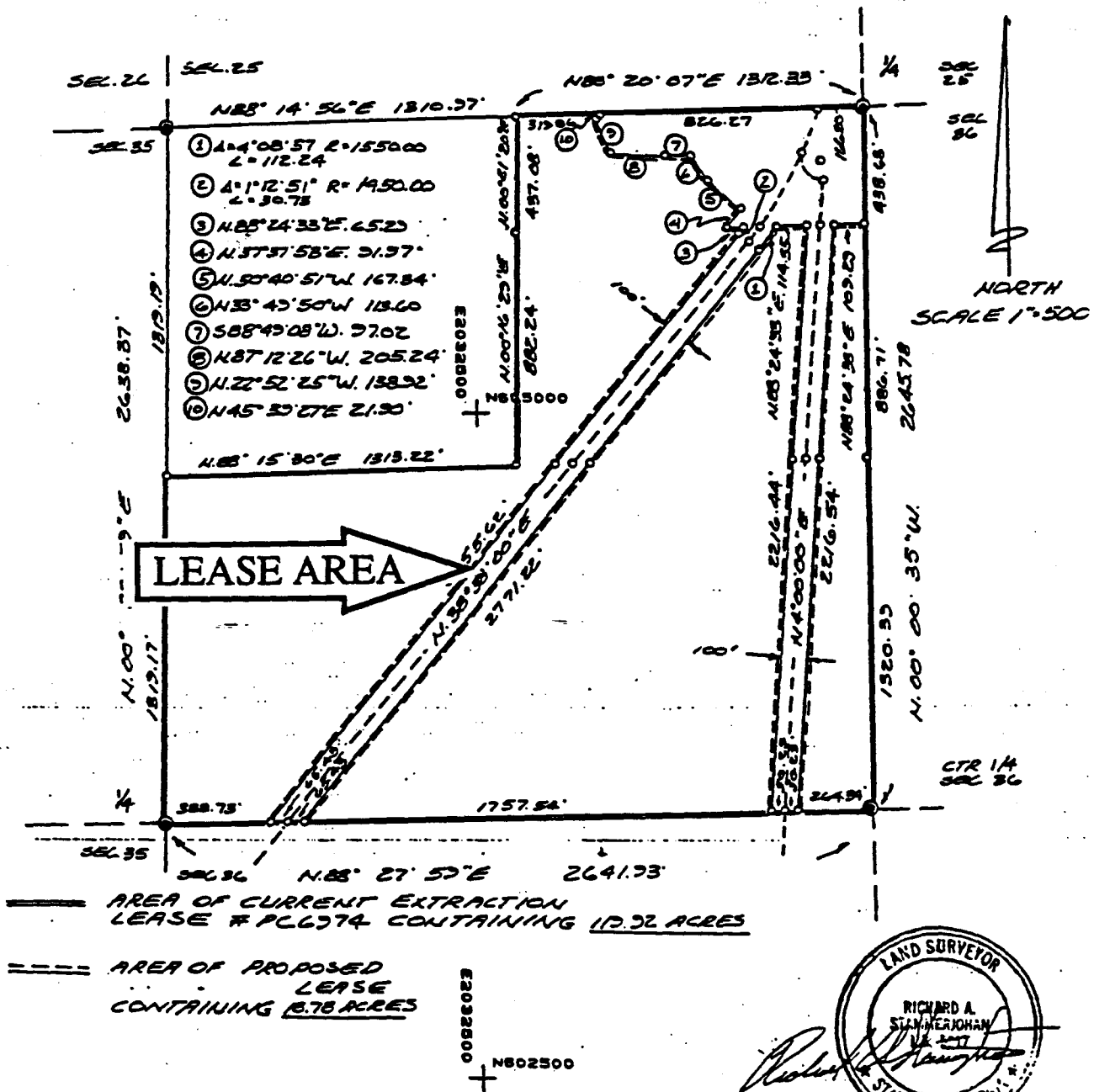
**AUTHORIZATION:**

AUTHORIZE ACCEPTANCE OF QUITCLAIM DEED FROM CALAVERAS COUNTY WATER DISTRICT AND AUTHORIZE TERMINATION OF A 49 YEAR MINERAL EXTRACTION LEASE PRC 6974, EFFECTIVE MAY 1, 1994; INVOLVING APPROXIMATELY 120 ACRES OF PATENTED MINERAL RESERVE SCHOOL LANDS IN CALAVERAS COUNTY.

FOR  
CALAVERAS COUNTY  
WATER DISTRICT  
423 EAST ST CHARLES ST.  
P.O. BOX 846  
SAN ANDREAS, CA. 95249  
(408) 754-3543  
FAX (408) 754-1063

BY  
JEFFRIES ENGINEERS  
373 WEST ST CHARLES ST.  
P.O. BOX 111  
SAN ANDREAS, CA 95249  
(408) 754-1853  
FAX (408) 754-5485

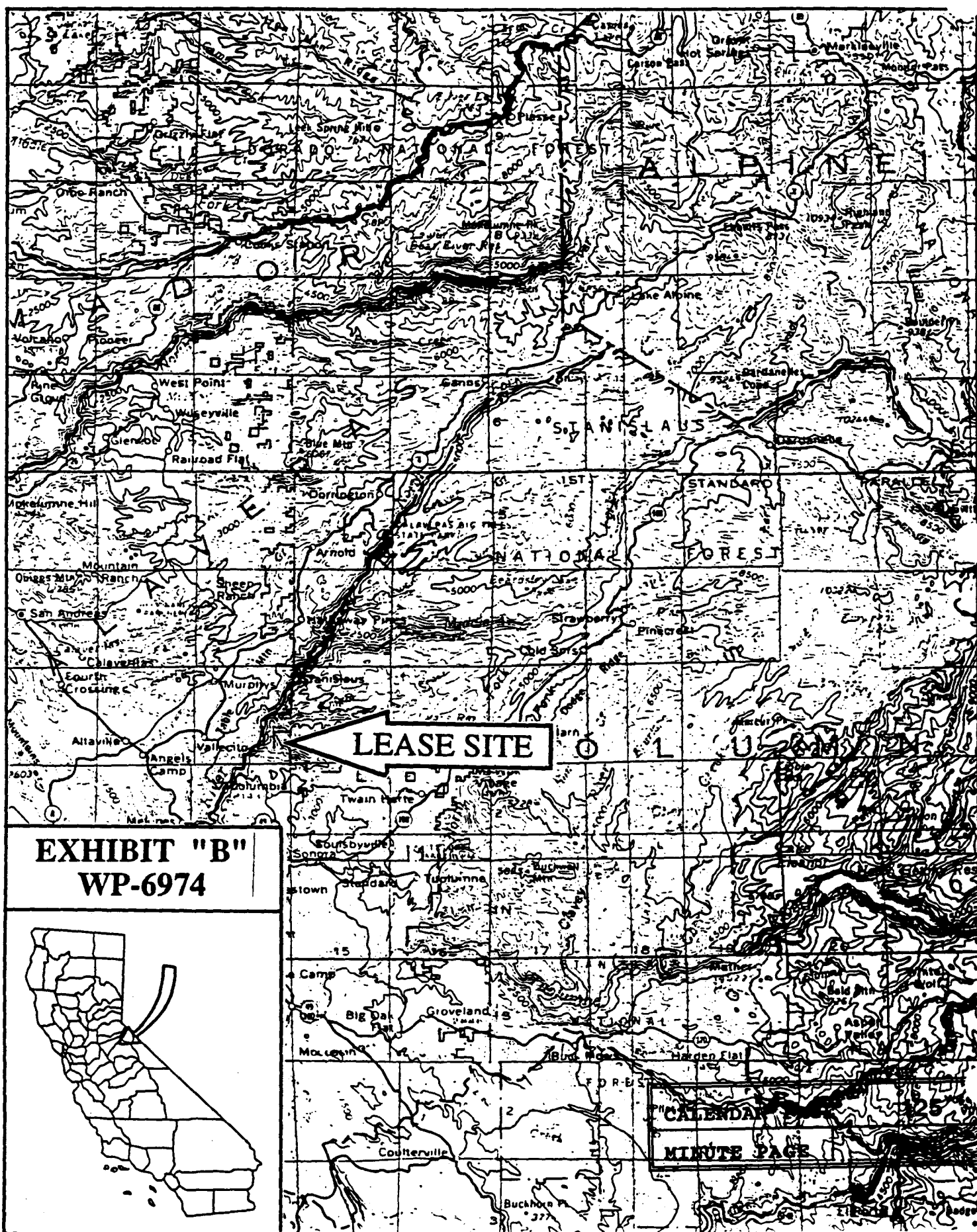
AREA OF EXTRACTION LEASE  
#PC 6974  
LYING WITH IN A PORTION OF  
THE N.W. 1/4 OF SECTION 36  
T.4N., R.14E., M.D.M.  
COUNTY OF CALAVERAS  
STATE OF CALIFORNIA  
DECEMBER 1993.



This exhibit is solely for purposes of generally defining the lease premises, and is not intended to be, nor shall it be construed as, a waiver or limitation of any State interest in the subject or any other property.

MINUTE PAGE

EXHIBIT 124  
PAGE  
WP-6974  
1978



**EXHIBIT "B"**  
**WP-6974**



**CALENDAR**  
**MINUTE PAGE**