

MINUTE ITEM

This Calendar Item No. C43
was submitted for information
only, no action thereon
being necessary.

**INFORMATIVE
CALENDAR ITEM**

C43

A 57, 58

S 29

11/09/93

W 16008

W 10425

Gaal

**MONITORING FOR POSSIBLE SUBSIDENCE AND
SEISMIC HAZARDS, LONG BEACH UNIT,
WILMINGTON OIL FIELD, LOS ANGELES COUNTY**

The City of Long Beach conducts surveys twice each year, in May and November, for the purpose of monitoring changes in ground elevation of the Long Beach tidelands and adjacent areas. The Commission's staff reviews and interprets the benchmark elevation data from these semi-annual surveys.

Ground elevation survey data for the 28 year period, May 1965 to May 1993, substantiate that no subsidence of the land surface has occurred as a result of operations in the Long Beach Unit. The current survey indicates 0.05 ft. of subsidence appears to have occurred in the vicinity of Island Grissom. Such anomalous conditions have been noted in the past and always adjust themselves by the time of the next survey. The results of the next regular elevation survey, to be conducted in November 1993, will be reported to the Commission after the data have been received and analyzed by the Commission's staff.

Additionally, a network of seven seismic monitoring stations are being operated for the Long Beach Unit under contract with the Geophysical Laboratory of the University of Southern California at a budgeted cost of \$145,000 for the current fiscal year. No seismic event originated within the Long Beach Unit during the review period November 1992 to May 1993. The Commission's staff will continue to advise the Commission of any change in seismic activity in the vicinity of the Long Beach Unit.

AB 884:

N/A

EXHIBIT:

A. Location Map

CALENDAR PAGE	405
MINUTE PAGE	2645

MAP OF THE WILMINGTON OIL FIELD AND LONG BEACH AREA,
LOS ANGELES COUNTY, CALIFORNIA

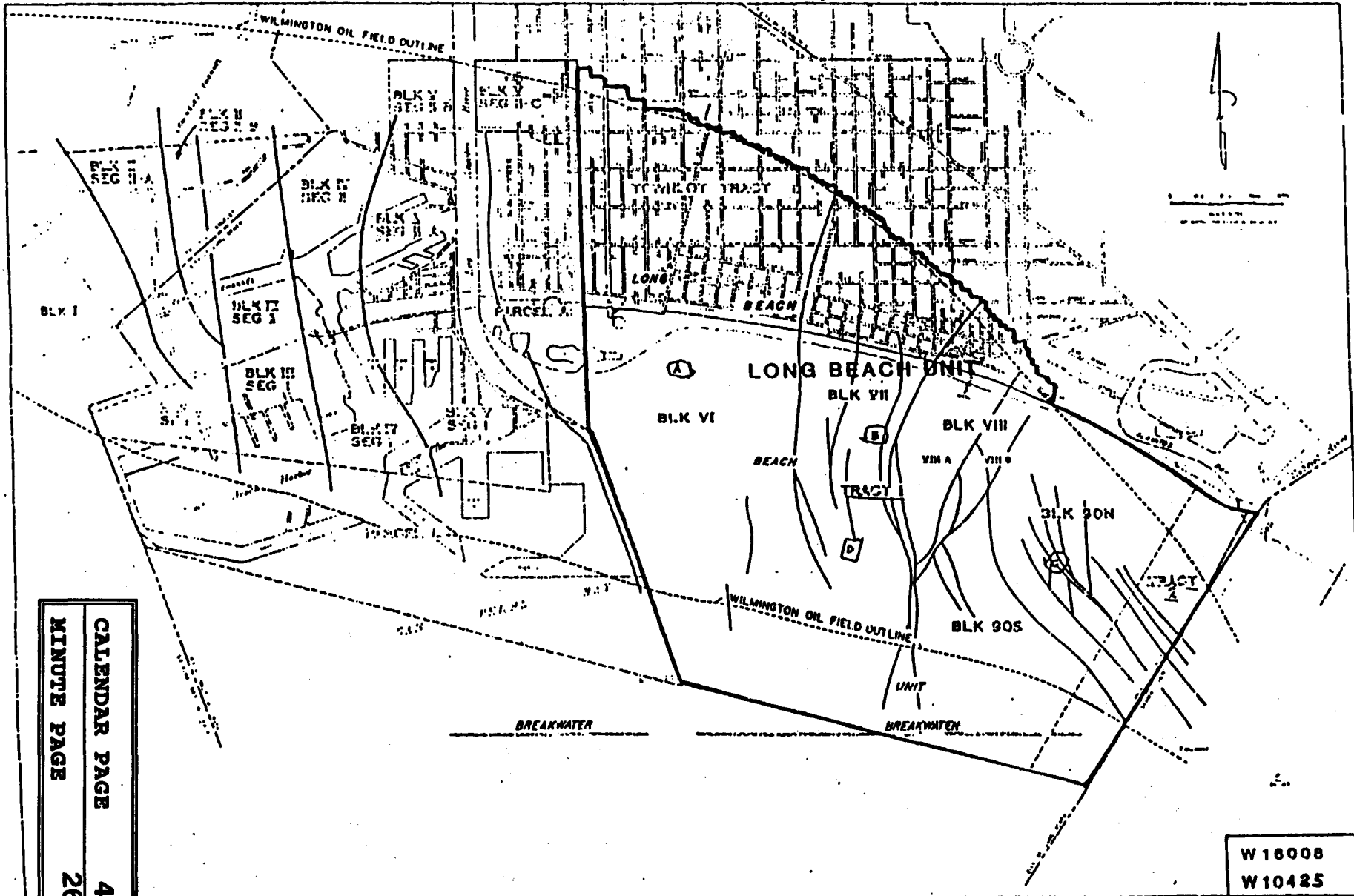


EXHIBIT A

CALENDAR PAGE	406
MINUTE PAGE	2646

W 16008
W 10425