

MINUTE ITEM
This Calendar Item No. C16
was approved as Minute Item
No. 16 by the State Lands
Commission by a vote of 3
to 0 at its 4-28-93
meeting.

CALENDAR ITEM

C16

A 1
S 2

04/28/93
W 24506
J. Ludlow
PRC 7682

PUBLIC AGENCY LEASE AND APPROVAL OF RIGHT-OF-WAY MAP

APPLICANT:

California Department of Transportation
District 1
Attention: Dave McCanless
P. O. Box 3700
Eureka, California 95502-3700

AREA, TYPE LAND AND LOCATION:

An approximate 0.146-acre parcel of sovereign land located
in the bed of the Van Duzen River near Alton, Humboldt
County.

LAND USE:

Highway purposes pursuant to Section 101.5 of the Streets
and Highways Code, specifically for the replacement of the
Highway 101 bridge across the Van Duzen River approximately
0.7 miles south of Alton and $\frac{1}{2}$ mile east of the confluence
of the Eel River and the Van Duzen River.

PROPOSED LEASE TERMS:

Indefinite period from date the lease is approved on behalf
of the State Lands Commission.

CONSIDERATION:

As set forth by Section 101.5, Streets and Highways Code and
the public use and benefit.

BASIS FOR CONSIDERATION:

Pursuant to 2 Cal. Code Regs. 2003.

STATUTORY AND OTHER REFERENCES:

- A. P.R.C.: Div. 6, Parts 1 and 2; Div. 13.
- B. Cal. Code Regs.: Title 3, Div. 3; Title 14, Div. 6.
- C. Section 101.5 of the Streets and Highways Code.

CALENDAR PAGE	219
MINUTE PAGE	513

CALENDAR ITEM NO. C16 (CONT'D)

AB 884:

N/A.

OTHER PERTINENT INFORMATION:

1. Pursuant to the Commission's delegation of authority and the State CEQA Guidelines (14 Cal. Code Regs 15061), an EIR was prepared, circulated for this project by the California Department of Transportation and certified by the California Transportation Commission. The State Lands Commission's staff has reviewed such document and considered the information contained therein.
2. The California Department of Transportation has prepared and the California Transportation Commission has adopted CEQA Findings for that portion of the project which will involve potential significant environmental effects, such findings are attached as Exhibit "D".
3. Pursuant to P.R.C. Section 21081.6, the California Department of Transportation has prepared and submitted a Mitigation Monitoring Program for the project attached as Exhibit "E".
4. This project will replace the historic Highway 101 northbound bridge and widen the southbound bridge which crosses the Van Duzen River south of Alton. The bridge was construction in 1924 and has required extensive repairs in recent years. The design of the replacement structure and its appurtenant roadway approaches is in conformance with existing federal standards.
5. The bridge is eligible for inclusion on the National Register of Historic Places. A Memorandum of Agreement has been executed by the Federal Highway Administration (FHWA) and the State Historic Preservation Officer (SHPO), with concurrence by Caltrans and acceptance by the Advisory Council on Historic Preservation for removal of the historic structure.

APPROVALS OBTAINED:

Department of Fish and Game, Humboldt County, North Coast Regional Water Quality Control Board waiver.

CALENDAR ITEM NO. C16 (CONT'D)

APPROVALS REQUIRED:

U.S. Army Corps of Engineers, California Coastal
Commission, North Coast Regional Water Quality Control
Board, State Lands Commission

EXHIBITS:

- A. Land Description
- B. Location Map
- C. Notice of Determination
- D. C.E.Q.A. Findings
- E. Mitigation Planting and Monitoring Plan

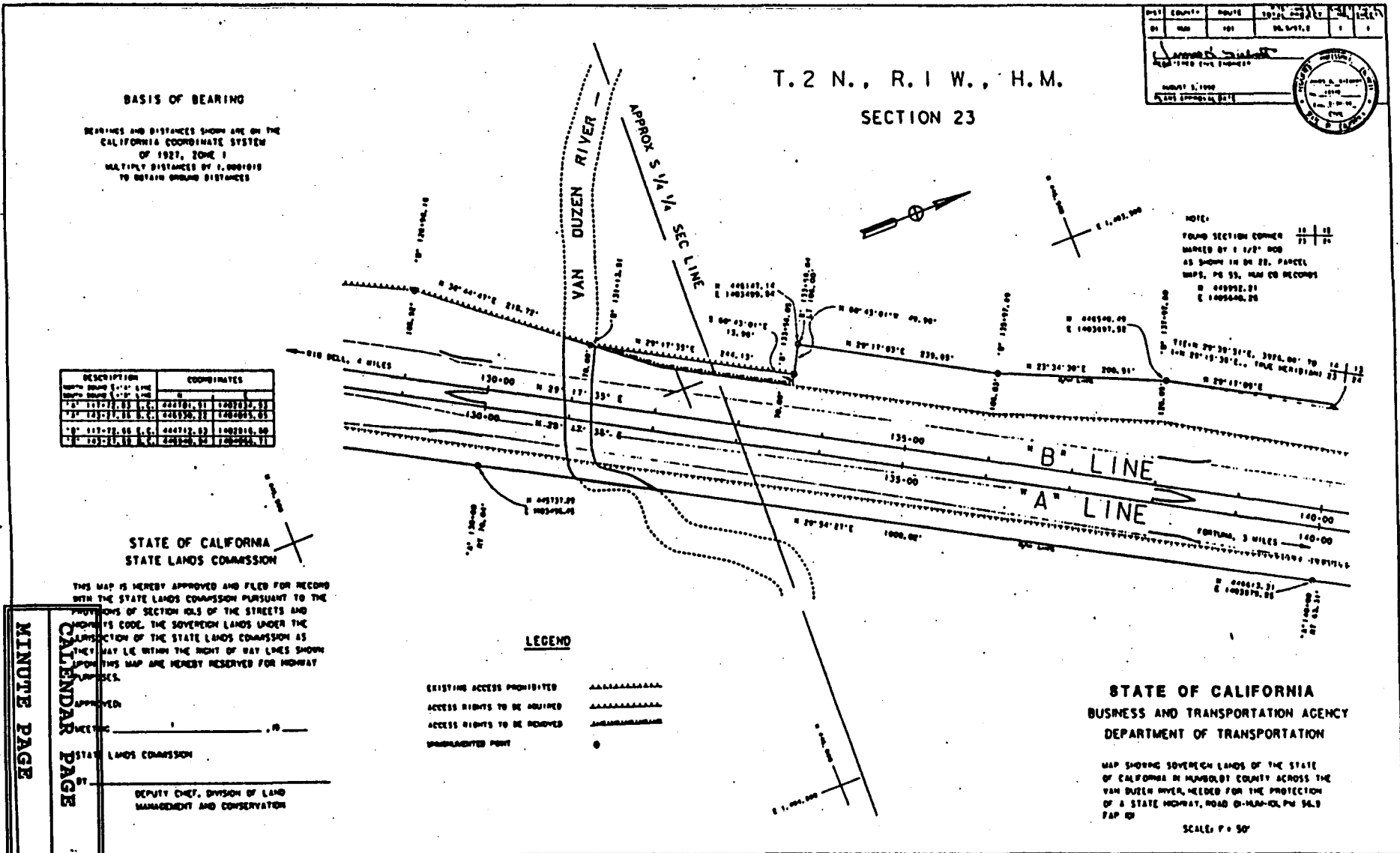
IT IS RECOMMENDED THAT THE COMMISSION:

1. FIND THAT AN EIR WAS PREPARED AND CERTIFIED FOR THIS PROJECT BY THE CALIFORNIA DEPARTMENT OF TRANSPORTATION AND THAT THE COMMISSION HAS REVIEWED AND CONSIDERED THE INFORMATION CONTAINED THEREIN.
2. ADOPT THE FINDINGS AND MONITORING PROGRAM REQUIRED BY THE CEQA AND ITS GUIDELINES WHICH ARE ATTACHED HERETO AS EXHIBITS "D" AND "E".
3. APPROVE THE MAP FILED BY CALIFORNIA DEPARTMENT OF TRANSPORTATION PURSUANT TO SECTION 101.5 OF THE STREETS AND HIGHWAYS CODE, AS SHOWN ON EXHIBIT 'A' ATTACHED AND BY REFERENCE MADE A PART HEREOF.
4. AUTHORIZE THE ISSUANCE OF A PUBLIC AGENCY LEASE TO THE CALIFORNIA DEPARTMENT OF TRANSPORTATION, FOR AN INDEFINITE PERIOD FROM THE DATE THE LEASE IS APPROVED BY THE STATE LANDS COMMISSION, FOR HIGHWAY PURPOSES ON THE LAND DESCRIBED ON EXHIBIT 'A' ATTACHED AND BY REFERENCE MADE A PART HEREOF.

CALENDAR PAGE	221
MINUTE PAGE	515

EXHIBIT "A"
LAND DESCRIPTION

WO 24506



BASIS OF BEARING

BEARINGS AND DISTANCES SHOWN ARE ON THE CALIFORNIA COORDINATE SYSTEM OF 1927, ZONE 1
MULTIPLY DISTANCES BY 1.0001018 TO OBTAIN GROUND DISTANCES

DESCRIPTION	COORDINATES
1.0' 117-77.00 S.E.C.	448710.91 128732.51
1.0' 123-77.31 S.E.C.	448736.33 128765.05
1.0' 117-77.00 S.E.C.	448710.91 128732.51
1.0' 123-77.31 S.E.C.	448736.33 128765.05

STATE OF CALIFORNIA
STATE LANDS COMMISSION

THIS MAP IS HEREBY APPROVED AND FILED FOR RECORD WITH THE STATE LANDS COMMISSION PURSUANT TO THE PROVISIONS OF SECTION 101.5 OF THE STREETS AND HIGHWAYS CODE. THE SOVEREIGN LANDS UNDER THE JURISDICTION OF THE STATE LANDS COMMISSION AS THEY MAY LIE WITHIN THE RIGHT OF WAY LINES SHOWN ON THIS MAP ARE HEREBY RESERVED FOR HIGHWAY PURPOSES.

LEGEND

- EXISTING ACCESS PROHIBITED
- ACCESS RIGHTS TO BE ACQUIRED
- ACCESS RIGHTS TO BE REMOVED
- UNSHADDED POINT

STATE OF CALIFORNIA
BUSINESS AND TRANSPORTATION AGENCY
DEPARTMENT OF TRANSPORTATION

MAP SHOWING SOVEREIGN LANDS OF THE STATE OF CALIFORNIA IN HUMBOLDT COUNTY ACROSS THE VAN DUZEN RIVER, HEADED FOR THE PROTECTION OF A STATE HIGHWAY, ROAD 01-HUM-02, PM 56.9 PAP 01

SCALE: 1" = 50'

MINUTE PAGE
CALENDAR PAGE
516
222

DEPUTY CHIEF, DIVISION OF LAND
MANAGEMENT AND CONSERVATION

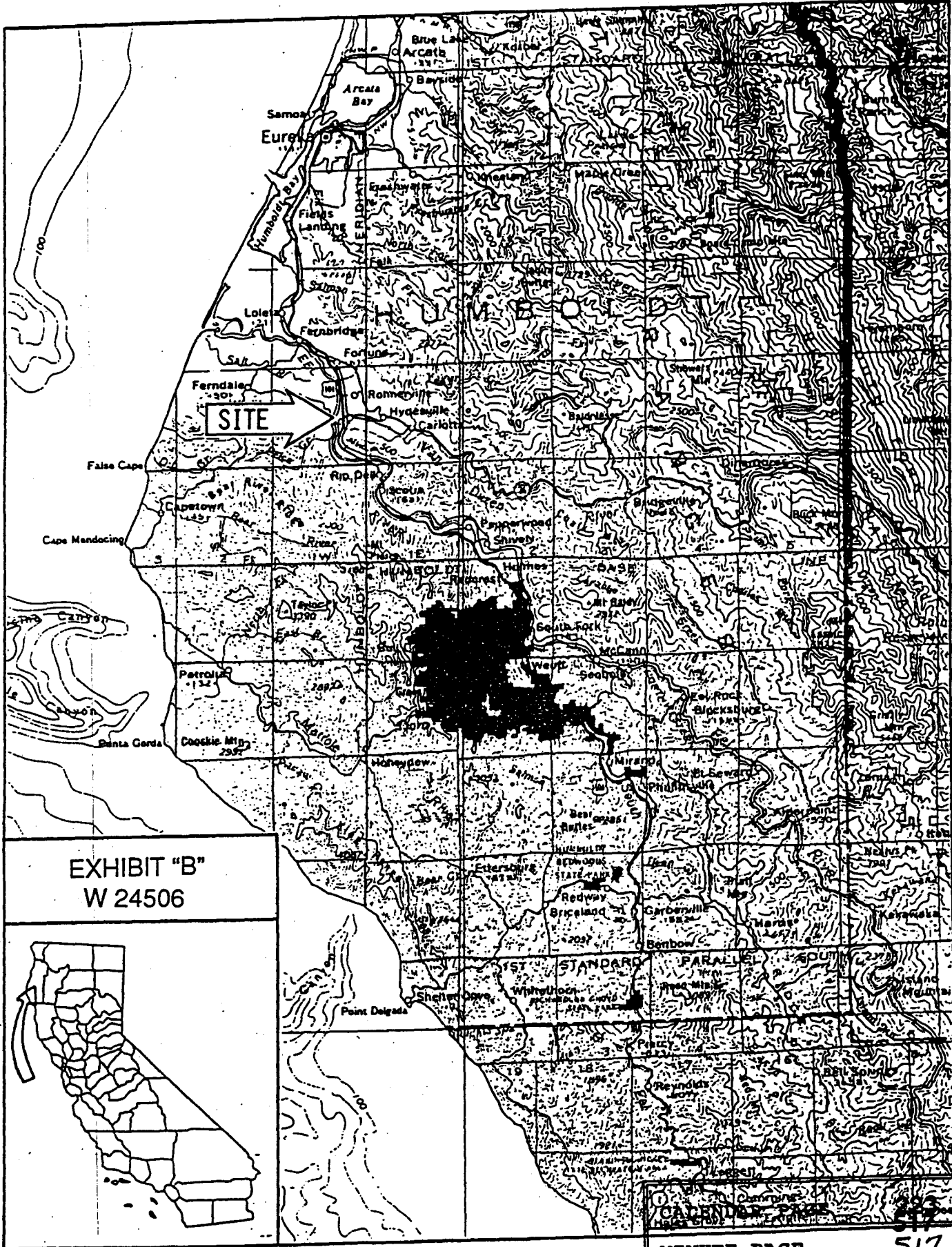
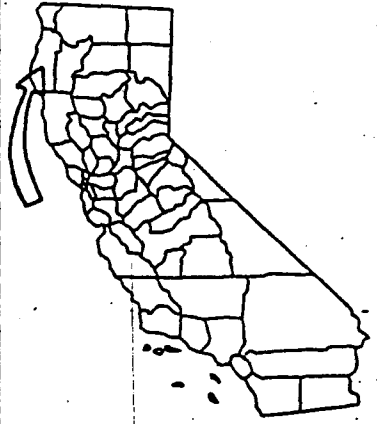


EXHIBIT "B"
W 24506



CAVENDISH
MAPS

Office of Planning and Research
1400 Tenth Street
Sacramento, CA 95814

1-Hum-101-56.5/57.2
SCH 90030344

NOTICE OF DETERMINATION

Subject: Filing of Notice in Compliance with Section 21108 of the Public Resources Code

Project Description: Replacement of the Van Duzen River Bridge (Bridge No. 4-17R) on Route 101, 0.7 mile south of Alton. The existing northbound bridge is to be removed and a new two-lane, northbound bridge built to current standards on existing alignment.

This is to advise you that the California Department of Transportation has made the following determinations regarding the above-described project:

1. The project has been approved by the California Department of Transportation.
2. The project will not have a significant effect on the environment.
3. An Environmental Impact Report was prepared for this project pursuant to the provisions of CEQA and was certified by the Department as required by the State CEQA Guidelines. A copy of the Environmental Impact Report may be examined at the Department of Transportation Office located at 1656 Union Street, Eureka, California.
4. Mitigation measures were made a condition of the project.
5. Findings were made pursuant to Section 15091 of the State CEQA Guidelines.
6. A statement of overriding considerations was not adopted for the project.

Submitted by the California Department of Transportation this 18th day of January, 1991.

California Department
of Transportation by
ORIGINAL SIGNED BY

RLK:mad/bsb
bcc:EFpoch
DLHarmon
RLKrumholz ✓

1-JGHaynes
2-LGBowermaster
3-TADavis

Deborah L. Harmon, Chief
Environmental Planning Branch
District 1

Attachments

1-FAW/bsb	CALENDAR PAGE	224
2-JAMartin		518
3-Bain/bsb	PAGE	518

CERTIFICATION

This is to certify that, in accordance with Section 15090 of the State CEQA Guidelines, the Final Environmental Impact Report (Final EIR) has been completed in compliance with CEQA and the State CEQA Guidelines.

Deborah L. Harmon
Deborah L. Harmon, Chief
Environmental Planning Branch
District 1

January 8, 1991
Date

This certifies that I have reviewed and considered the information contained in the Final EIR prior to approving the project. Findings have been prepared for each of the significant environmental impacts identified in the Final EIR. These findings are attached.

E. F. Poch
E. F. Poch
District Director
District 1

1-16-91
Date

CALIFORNIA TRANSPORTATION COMMISSION

PROPOSED FINDINGS FOR REPLACEMENT

OF THE VAN DUZEN RIVER BRIDGE

BRIDGE NO. 4-17R AT ALTON

The following information is presented to comply with Section 15091 of the State CEQA Guidelines and Section 1509.6 of the Department of Transportation and California Transportation Commission Environmental Regulations. Reference is made to the Final Environmental Impact Report (FEIR) for the project, which is the basic source for the information. Mitigation monitoring will be in accordance with Caltrans' standard program contained in Article 1-2.4 of the Environmental Handbook, Volume 1.

The following effect has been identified in the EIR as resulting from the project. Effects found not to be significant have not been included.

CALENDAR PAGE	326
MINUTE PAGE	520

pg. 2 of 2

HISTORIC STRUCTURE

Adverse Environmental Effect:

The project will require removal of the Van Duzen River Bridge (No. 4-17R) on U.S. Route 101; 0.7 mile south of Alton. The bridge was determined eligible for listing on the National Register of Historic Places in 1980 under criteria B and C at the local level of significance.

Findings:

Changes or alterations have been required in, or incorporated into the project which mitigate or avoid the significant environmental effects thereof as identified in the Final EIR.

Statement of Facts:

Mitigation for the bridge removal shall consist of recordation according to standards established for the Historic American Engineering Record (HAER), which can include a written historical record, engineering or measured drawings and archive quality photographs. At minimum, copies of the recordation will be made available to HAER, the California State Library, the Bancroft Library at the University of California, Berkeley, and the Humboldt County Historical Society, as responsible repositories. This proposed mitigation effort is the subject of a Memorandum of Agreement involving the Federal Highway Administration, the State Historical Preservation Officer, and the Advisory Council on Historic Preservation.

CALENDAR PAGE	227
MINUTE PAGE	521

Mitigation Planting and Monitoring Plan

W 24506

Project Description

Bridge #4-17R over the Van Duzen River will be demolished and replaced. An access road northeast of the bridge will be moved northward resulting in a loss of approximately 0.5 acre of riparian vegetation. Trees to be impacted include red alder, black cottonwood and willow. Shrubs to be impacted include thimbleberry, poison oak and blackberry. This loss will be mitigated on a parcel of approximately one acre adjacent to the Van Duzen River Overflow Bridge (see enclosed plans). Alder, cottonwood and willow seedlings will be planted on the mitigation site.

Erosion Control and Planting Plan

During construction Caltrans' Standard Specifications regarding temporary erosion control will be in effect. Prior to completion of construction wood fiber, fertilizer, straw, and stabilizing emulsion will be applied to all disturbed areas. Additionally, the areas will be hydroseeded with California poppy, Shasta daisy, Farewell to Spring, Chinese Houses, Tidy Tips, Blue Flax, and Crimson Clover. For quantities of the above, please see the attached Erosion Control and Revegetation Material list.

We propose to mitigate for the removal of the riparian vegetation by replanting red alder (*Alnus oregona*), cottonwood (*Populus trichocarpa*), and willow (*Salix sp.*) plants. Bare root stock, cuttings or container stock will be used, depending on species and availability. Approximately 500 plants will be planted in clusters equivalent to planting on ten (10) foot centers. Seedlings will be planted after the mitigation site is excavated to the appropriate grade shown on project plans and after November 1st and prior to February 15. This project will require two years to complete; tree planting may occur after either the first or the second year. If replacement plantings are required, re-planting will occur during the same time period (November 1 to February 15).

Monitoring Plan

Mortality will be assessed annually by plant count. After three years of monitoring by the District Environmental Planning Branch, the mitigation will be considered successful if the number of trees surviving are equal to or greater than twice the number of trees removed. Thirty seven (37) trees will be removed, therefore, if the number of trees surviving after three years is less than 74, we will replant seedlings until at least the required number of individuals have become established on the revegetation site. If necessary, additional seedlings will be planted during the Fall/Winter period. A monitoring report will be submitted to the California Coastal Commission annually on October 15 beginning one year after the initial planting of seedlings. The mitigation site will be monitored, and reports will be submitted, for three (3) years after the most recent tree planting.

Caltrans, District 1
P.O. Box 3700
Eureka, CA 95502-3700

1-Hum-101-56.3/57.4

01201 173201

Replace Van Duzen

River Bridge #4-17R

CALENDAR PAGE	228
MINUTE PAGE	522