

MINUTE ITEM 01

W 30066

Kata Bartoloni

CONSIDER A PROPOSAL TO THE LEGISLATURE FOR LEGISLATION
ESTABLISHING A CALIFORNIA RIVERS RIPARIAN PARKWAYS PROGRAM WITHIN
THE STATE LANDS COMMISSION.

Charles Warren and Dwight Sanders introduced the proposal for legislation that would establish a California Rivers Riparian Parkway program within the State Lands Commission. The proposed legislation would also provide for coordination with other State agencies and would establish the Commission as administrator, coordinator, and facilitator of the Program.

The following people testified before the Commission in support of Calendar Item 01:

1. Michael Papanian
Sierra Club
(Would like a more definite funding source as it appears it must compete with other funding.)
2. Corey Brown
Planning and Conservation League
(Congratulated SLC for taking the leadership role on such environmental issues.)
3. Coke Hallowell
San Joaquin River, Parkway and
Conservation Trust
(Very supportive as the Parkway and Conservation Trust is planning a 22 mile trail along the San Joaquin River. Also gave SLC some brochures to be handed out to staff as well as a copy of her speech.)
4. Lydia Miller
San Joaquin Raptors Wildlife and
Citizens for a Health Environment
(Wanted to emphasize coordination with other agencies.)
5. Ginger Strong
City of Visalia
(Would like to see people working within their own communities to establish riparian habitat parkways. She feels this legislation will help the individual communities and cities get this accomplished.)

CALENDAR PAGE _____
MINUTE PAGE _____

Minute Item 01
(continued)

6. Mel Dodgin
Pacific Coast Federation
of Fishermen's Association
(This should help small communities to maintain some of their riparian habitat that is going to be lost because they do not have the resources to take care of these things.)
7. Pamela Romo
Citizen Activist
(Would like to encourage SLC to write into the legislation the definition for waterways as broadly as possible to help smaller communities.)
8. John Newbold, Director
McKelumne River Alliance
(This would ensure access to the rivers as property owners are generally against these types of programs establishing access to the public.)

Mr. Warren also presented letters in support of the program.

Commissioner McCarthy indicated he wanted to make sure staff works closely with the new governor on this legislation as he has indicated a special interest in river habitat.

After considerable discussion, no action was taken by the Commission.

Attachment: Calendar Item 01

A 4, 8, 10

S 1, 5, 6

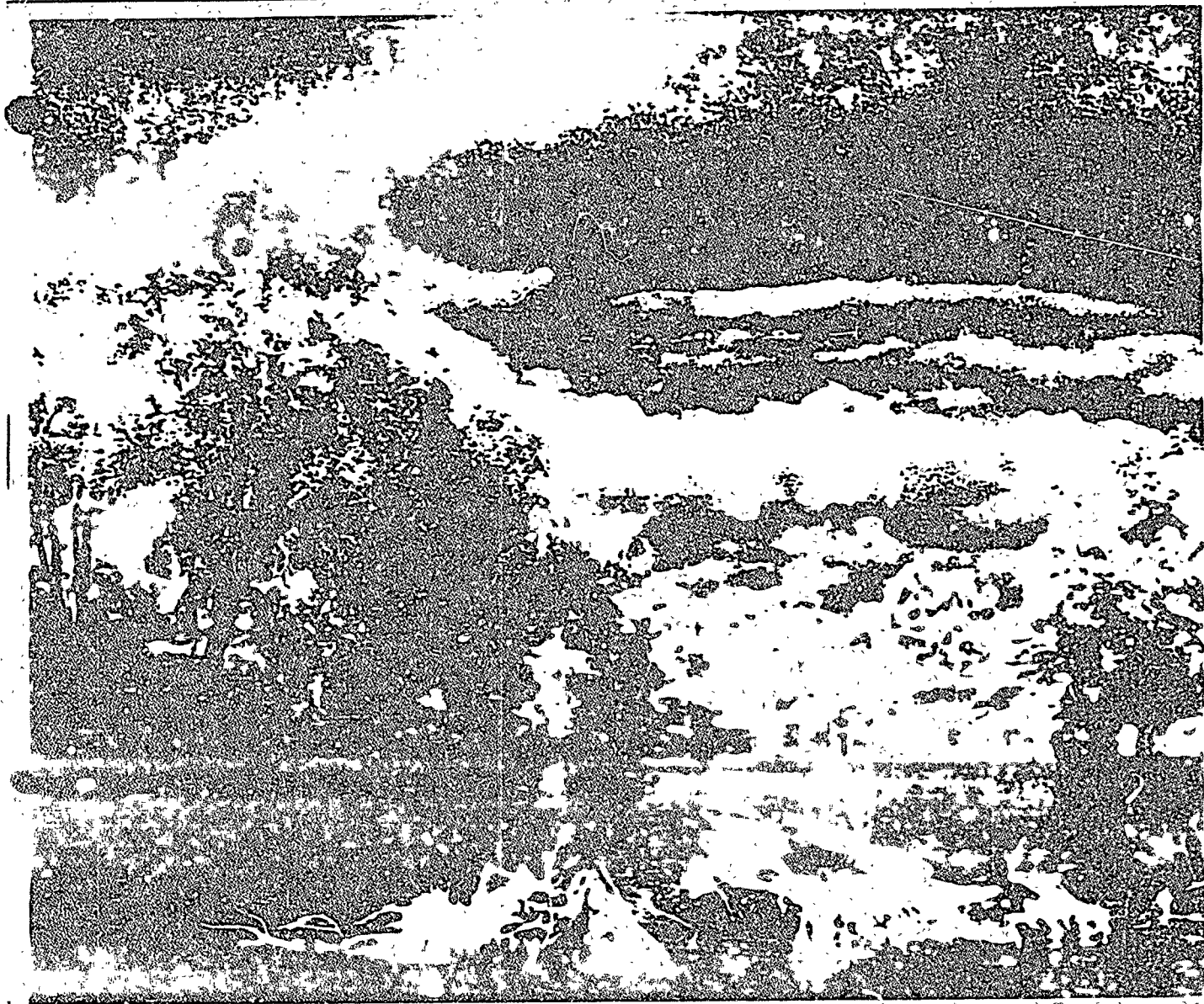


Photo Gerard Gerzon

The San Joaquin River Parkway and Environs Conceptual Plan

Future generations will measure the success of our stewardship of the San Joaquin River by whether they share what we now enjoy — crystal clear water full of darting fish, canopies of majestic oaks and sycamores, melodic ripples traversing gravel bars, views of the high Sierra Nevada, the wild calls and riotous display of wood ducks, and glimpses of elusive beaver and deer

And public service to citizens, elected officials and agencies of Madera and Fresno Counties, and other local, state and federal agencies, the San Joaquin River Parkway and Conservation Trust prepared the San Joaquin River Parkway and Environs Conceptual Plan.






The Conceptual Plan presents a vision into the next century of a natural greenway of wildlife habitat, parks, trails and vista points along the San Joaquin River. It is a proposal for conservation, education and recreation uses of 22 miles of San Joaquin River bottomlands from Friant Dam to State Highway 145.

The geographic signature of the parkway proposed in the Conceptual Plan is not arbitrary. Muleron Lake State Recreation Area is at the upper end and Skaggs Bridge Regional Park anchors the lower. Urban centers and growth areas front the river. Most importantly, water flows through and links this stretch of the river year round.

CALENDAR PAGE _____
MINUTE PAGE _____

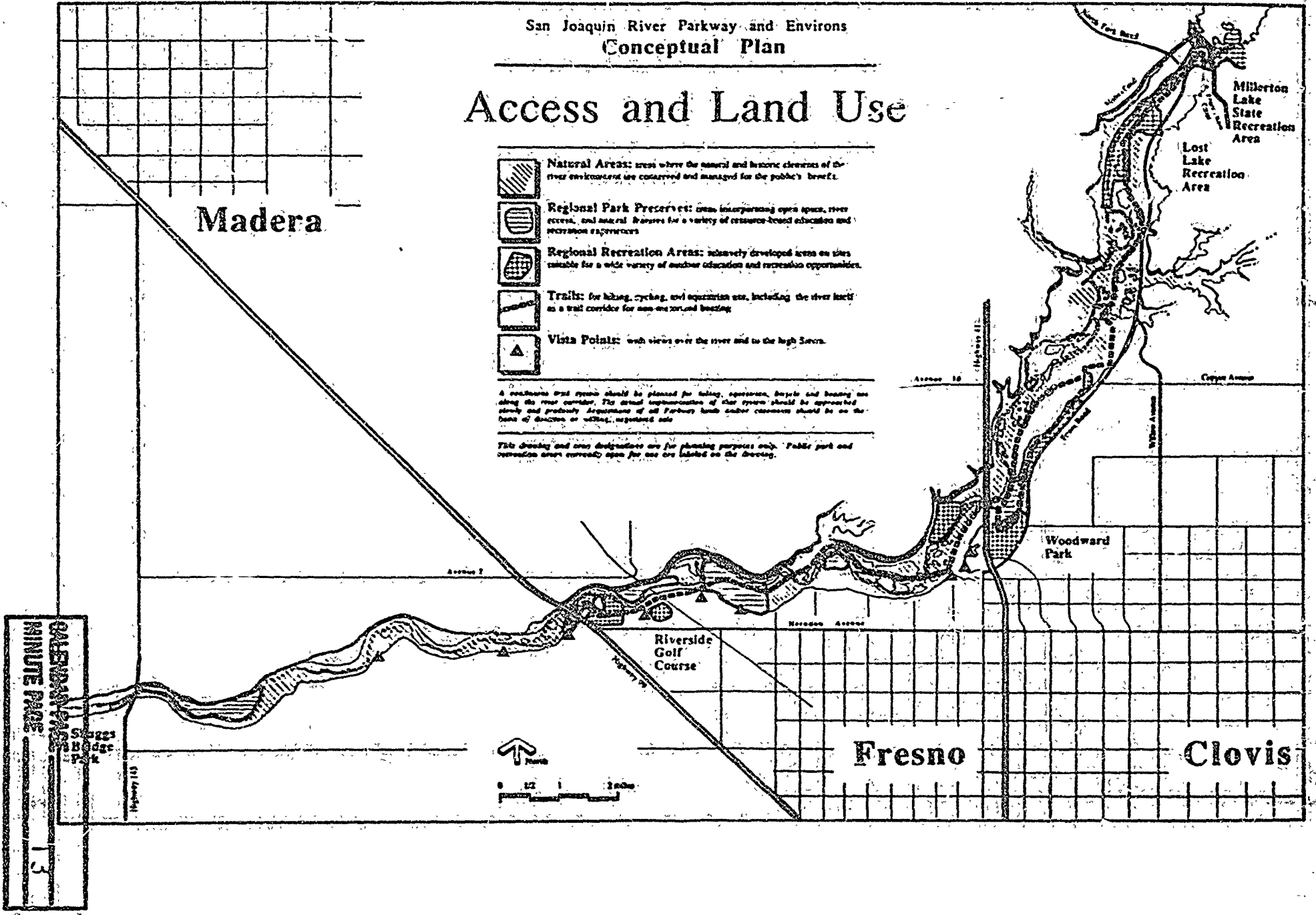
San Joaquin River Parkway and Environs
Conceptual Plan

Access and Land Use

-  **Natural Areas:** areas where the natural and historic elements of the river environment are conserved and managed for the public's benefit.
-  **Regional Park Preserves:** areas incorporating open space, river access, and natural features for a variety of resource-based education and recreation experiences.
-  **Regional Recreation Areas:** intensively developed areas on sites suitable for a wide variety of outdoor education and recreation opportunities.
-  **Trails:** for hiking, cycling, and equestrian use, including the river itself as a trail corridor for non-motorized boating.
-  **Vista Points:** with views over the river and to the high Sierras.

A continuous trail system should be planned for hiking, equestrian, bicycle and boating use along the river corridor. The actual implementation of this system should be approached slowly and prudently. Segments of all Parkway lands under easement should be on the basis of donation or willing, negotiated sale.

This drawing and area designations are for planning purposes only. Public park and recreation areas currently open for use are labeled on the drawing.



San Joaquin River Parkway

San Joaquin River Parkway

San Joaquin River Parkway

Current

Two developed public parks for adjacent to the river. Lost Lake Recreation Area, a 20-acre park 1.0 miles below Fruit Creek, and Slaggs Bridge Park, a 17-acre park on State Highway 145. Both are administered and operated by Fresno County. The County also owns three miles of bluff top property along Fresno River, north of Woodward Park Woodward Park, operated by the City of Fresno, encompasses 36 acres along the bluffs between Route 41 and Fruit Road. The City of Fresno also owns undeveloped land connecting Woodward Park to the San Joaquin River, and the 18-hole Riverside Municipal Golf Course over looking the river corridor.

The Wildlife Conservation Board has acquired 266 undeveloped acres on the river between Highways 99 and 41 that is currently managed by the California Department of Fish and Game. A management plan is being developed for this site which is not yet open for public use. Millerton State Recreation Area lies immediately east of the parkway. A trail system in this highly developed recreation area will be linked to the parkway. Many private recreation areas and facilities are along the river, including: Boy Scouts Camp Fresno, Fresno County Sportsman's Club, Fort Washington Beach, Bull Ranch, Millerton Conservation Area, and San Joaquin County Club and Big Lander Golf Course.

CA 97314
MI 17

Five types of parkway use areas are proposed:

- Natural Areas** where natural and historic elements are considered of public benefit, but are suitable for only a limited, managed form. Essential elements of Natural Areas are flora fauna, flood hazard, scenery, archeological and historic values, or geology. Natural Areas include habitat of rare or threatened plant and animal species, riparian and wetland habitats, areas with high erosion potential, 100-year floodplains, and archeologic sites. Natural Areas would typically prohibit vehicular access, except for emergency use. Ideally, Natural Areas should be in public ownership.
- Regional Park Preserves** are created open space river access and sufficient natural features or opportunities for restoration to support a variety of resource based education and recreation experiences. Park Preserves would typically include visitor stations, parking, individual and small group picnic areas, outdoor

activities, and other parkway uses. Park Preserves are developed areas on sites suitable for a wide variety of outdoor recreation and recreation opportunities. Regional Recreation Areas would typically be developed for active and passive recreation; they would include paved or gravel parking, camping areas for trail users, small to medium sized picnic areas, loop trails, river access, interpretive exhibits, and visitor amenities. They could include Natural Areas, but

not necessarily. Regional Recreation Areas would typically be developed for active and passive recreation; they would include paved or gravel parking, camping areas for trail users, small to medium sized picnic areas, loop trails, river access, interpretive exhibits, and visitor amenities. They could include Natural Areas, but

Regional Recreation Areas are proposed in the Conceptual Plan.

- Trails Corridors** are linear, cycling, and equestrian use, including the river itself as a trail corridor for non-motorized boating. A multi-use Riverway Trail is proposed from Millerton State Recreation Area to Highway 99 paralleling the river. Vehicular access to this linear trail system will be restricted in major corridor use areas. The Riverway Trail route would be a minimum 150' wide from the edge of the river or any wetland area. A minimum 300' buffer is proposed between the trail and residential or commercial structures. On-site parking areas would run on one side only. Connecting trails would link the Riverway Trail to adjacent communities and to Loop Trails in Regional Recreation and Park Preserve Areas.
- Visit Points** are stop the bluffs and other parkway uses.

and to the high use areas. Riverway Trail would be linked to other parkway uses in the Conceptual Plan.

with other public use facilities will incorporate a number of conservation, education, and recreation programs. While much of the river corridor currently may be described as a disturbed landscape, a Habitat Improvement Program will transform the landscape into one providing the indigenous riverine system Resource Conservation features associated with this program include plant propagation

nurtures water quality monitoring stations, and sand and gravel reclamation demonstration projects. Education and Interpretation Programs will utilize the unique opportunities afforded by the river corridor. The Conceptual Plan emphasizes programs that foster scientific attitudes, promote rational and creative communication skills, advance scientific knowledge, advocate stewardship, and encourage volunteerism integral to preserving that stewardship.

Parkway education features include: a proposed Education Center for K-12 and teacher in-service training; a Visitor Information Center for the general public; the San Joaquin Fish Hatchery Interpretive Center, education trails and outdoor classrooms; interpretive trails, star gazing areas, research areas for advanced studies; and environmental art sites. Additional recreation features include an equestrian center near Highway 99; a conservation camp; area, and roadside rest stops for Highway 99.

Make check payable to: San Joaquin River P.A.C.T. Return form to: San Joaquin River Parkway and Conservation Trust, 668 West Shaw, #F-174, Fresno, CA 97314. The San Joaquin River Parkway and Conservation Trust is a non-profit public benefit corporation, organized and operated exclusively for charitable and educational purposes within the meaning of Section 501(c)(3) of the Internal Revenue Code. Donations to the Trust are deductible as contributions within the meaning of Section 170(b) of the Internal Revenue Code.

Making the parkway become a reality will take a long time. Conceptual Plan proposals are grouped into three priorities. Priority I activities would occur in the first five years, Priority 2 in five to twenty years, and Priority 3 beyond twenty years.

It is imperative that the guidelines contained in the Conceptual Plan be adopted by the many federal, state and local agencies that have the responsibility of managing in the public's interest, the land and water resources of the San Joaquin River. The San Joaquin River natural ecosystem does not necessarily merit Congressional jurisdiction and engineered environment. These guidelines offer agencies a way to coordinate their policies in a way that respects the ecological values of the river environment. The Trust recommends that Fresno County, Madera County, and the City of Fresno initiate Conceptual Plan Award grants in their respective Conservation and Open Space Elements to incorporate resource management guidelines of the Conceptual Plan.

The parkway cannot be implemented for its creation.

through public workshops. Land use administration, design and operational plans to a coordinated master plan for the system. Only local, state, and federal public agencies can address powers and ongoing funding source appropriate to an effective realization of the parkway. The Trust is a San Joaquin River Parkway Task Force, a nonprofit organization for the Trust, public land management and regulatory agencies, educational institutions, the business community, landowners, and interests both public and private is strongly recommended.

The purpose of the Task Force was to examine options for parkway implementation, including joint power agreements, special park and open space districts under existing statutes, special districts, and state agency management. The San Joaquin River Parkway Task Force would then recommend the most appropriate management form for the parkway, including authorizing boundaries, funding mechanisms, a specific map, and timetable schedule for its creation.

Yes, I want to contribute to the effort to create a San Joaquin River Parkway!

\$1000 \$500 \$100

\$5000 \$250 \$50

Name _____

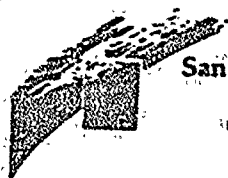
Address _____

City/State/Zip _____ Phone _____



Photo: Gerard Gardner

The San Joaquin River Parkway

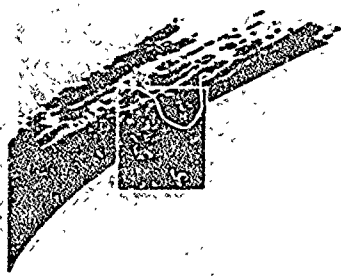


San Joaquin River Parkway and
Conservation Trust
668 West Shaw, Suite F-174
Fresno, California 93704

Non-Profit
Organization
U.S. Postage
Paid
Fresno, CA
Permit No. 1599

*We've taken the first step on the path to the San Joaquin River Parkway.
Now is the time to take the next step.*

CALENDAR PAGE	_____
MINUTE PAGE	15



San Joaquin River
Parkway and
Conservation Trust

Presentation To The State Lands Commission
On January 3, 1991 at The State Capitol
By Coke Hallowell, President

- ▶ Bette Chase
- Clary Creager
- Don Crocker
- Lewis Eaton
- Bill Forbes
- Diane Gandolfo
- Coke Hallowell
- Gloria Jackson
- Rodger Jensen
- Ed Kashlan
- Dorror MacMichael
- Joseph Penbera
- Ron Rempel
- Mary Savala
- Darwin Shestak
- Margaret Thorburn
- Mike Urrutia
- Spalding Warren
- John Wissler
- ▶ Dave Kochler
Executive Director
- Lesley Kellas Payne
Development Director
- Patti Tyles
Administrative Assistant
- Jeff Boswell
Legal Counsel

Lieutenant Governor and members of the Commission, my name is Coke Hallowell, President of the San Joaquin River Parkway and Conservation Trust. I am pleased to be invited to speak here today and express our support for the California Rivers Riparian Act.

As you may know, we launched our efforts to protect and enhance the environs of the San Joaquin River in 1988. Through strong support of Assemblyman Jim Costa and other individuals from federal, state, and local agencies, we have made a tremendous start...but there is a long way to go. *(A riparian commission for our future)*

California's riparian forest has dwindled to a meager 2 percent. To make matters worse, the percentage of remaining forests on a local and state level is highly fragmented. Through combined efforts, we can work to preserve and restore this fragile ecosystem.

The message we here from our local community is loud and clear...protect and enhance the San Joaquin River we now enjoy. Protect the crystal clear water of darting fish, canopies of majestic oaks and sycamores, the wild calls and riotous display of wood ducks, and glimpses of elusive beaver, deer, and osprey. Leave a legacy for future generations to enjoy!

The goals set forward in the California Riparian Act are commendable and will help efforts in many communities. We look forward to the legislation winging its way through the process, *and the producing* ~~and the~~ *benefits it will achieve.* *for the enjoyment of the entire State of Calif.*

668 West Shaw
Suite F-176
Fresno, CA 93704
(209) 224-4151
FAX 224-1957

MINUTE ITEM
The Calendar Item No. 1
was approved as Minute Item
No. 1 by the State Lands
Commission by a vote of 3
to 0 at its 139
meeting.

CALENDAR ITEM

A 4, 8, 10

1

01/03/91
W 30066
Bartoloni

S 1, 5, 6

CONSIDER A PROPOSAL TO THE LEGISLATURE FOR
LEGISLATION ESTABLISHING A CALIFORNIA RIVERS
RIPARIAN PARKWAY PROGRAM WITHIN THE
STATE LANDS COMMISSION.

PARTY: State Lands Commission
1807 - 13th Street
Sacramento, California 95814

The proposed California Rivers Riparian Parkway Act establishes, within the State Lands Commission, the California Rivers Riparian Parkway Program (Riparian Parkway Program). Under the provisions of the proposed bill, Exhibit "A", local public entities would be eligible to receive grant monies for the creation and implementation of parkway plans on California waterways. The Commission would assist the local agency with its planning efforts and serve as the administrator of the Natural Resources Restoration and Development Fund established by the legislative proposal. As envisioned in the proposal, parkway plans would provide for preservation protection, and restoration of riparian habitat and for recreational opportunities and access to the waterway.

Many communities have already begun to recognize the values that a river provides. Nearly 30 California communities have initiated efforts to establish river parkways, Exhibit "B". The American River Parkway in Sacramento, Bidwell Park in Chico, and the emerging Guadalupe River Park in San Jose are examples of river-oriented parkways that provide the recreation, habitat, and scenic values desired by these communities. However, most of these communities require additional funds and technical assistance to accomplish their parkway goals.

(REVISED 01/02/91)

-1-

CALENDAR PAGE 97
MINUTE PAGE 17

The proposed California Rivers Riparian Parkway Act establishes the Natural Resources Restoration and Development Fund (Fund). Monies which could be deposited to the Fund include (a) a source to be designated by the Legislature, (b) grants to the Commission, (c) gifts and bequests, (d) bond measures, (e) sources as otherwise provided by law, and (f) revenues from State leases within an approved Plan. Other potential funding sources are listed in Exhibit "C".

The proposed legislation also provides for coordination with other State agencies, among them the Coastal Conservancy, the Wildlife Conservation Board, the Department of Fish and Game, the California Department of Forestry and Fire Protection, the Reclamation Board, the Department of Water Resources, and the Department of Boating and Waterways.

The proposed California Rivers Riparian Parkway Act would enhance the Commission's already active role in State waterways protection and establish the Commission as administrator, coordinator, and facilitator of the California Rivers Riparian Parkway Program.

AB 884: N/A.

EXHIBITS: A. Proposed California Rivers Riparian Parkway Act.
B. Survey of California River Parkway Efforts.
C. California Rivers Riparian Parkway Program-- Funding Sources

EXHIBIT A

The people of the State of California do enact as follows:

The California Rivers Riparian Parkway Act

Chapter 1. General Provisions

Section 9000. Short Title. This chapter, Division 9 (commencing with Section 9000) of the Public Resources Code shall be known, and may be cited as, the California Rivers Riparian Parkway Act.

Section 9001. The Legislature hereby finds and declares as follows:

- a. California's rivers and waterways are a valuable and finite resource which benefit all people of the State.
- b. Such waterways provide water necessary to support wildlife, agriculture and urban areas of the State.
- c. The public interest requires that waterways be managed to meet the needs of, among other things, recreation, environmental protection, commercial development, and flood control.
- d. The State Lands Commission, under Division 6 of the Public Resources Code, has exclusive jurisdiction over the State's navigable waterways.
- e. The public trust doctrine in California requires that the waterways of the State be managed to promote commerce, navigation, fisheries, recreation, public access, and preservation of land in its natural state.
- f. The State's waterways pass through some of its major urban areas and provide for unique access and recreational opportunities.
- g. Riparian habitat along the State's waterways provides unique scenic benefits to urban population centers and supports abundant and varied populations of plants and animals, including rare, threatened, and endangered species, and further provides benefits to fisheries and other water-dependent resources.

December 19, 1990

1

DRAFT

CALENDAR PAGE	003
MINUTE PAGE	19

- h. Ninety-five percent of native riparian habitat in the State has been lost, with corresponding adverse impacts to the State's environment and economy.
- i. Increased human populations will place additional demands on the State's waterways which can be met best through cooperative management by the State and local governments.
- j. Local governments are seeking to preserve, protect and restore riparian habitat and to provide public recreational opportunities on and along waterways within their jurisdictions.

Section 9002. The Legislature further finds and declares:

- a. It is necessary to establish a statewide program which encourages the development of plans to protect public trust values and to balance competing uses of the State's waterways.
- b. Protection and development of the resources of the State's waterways can best be accomplished through cooperative efforts by the State and local governments in the development and implementation of local river riparian parkway plans.
- c. It is the policy of the State, in furtherance of Article 10, Section 4, of the California Constitution, to support the development and implementation of such plans.

Chapter 2. Definitions

Section 9003. Unless the context requires otherwise, the following definitions shall govern the construction of this chapter:

- (a) "Local government" means any chartered or general law city, chartered or general law county, any city and county, or special district (as defined in Section 17520 of the Government Code), or an agency created by the Joint Exercise of Powers Act.

December 19, 1990

2

DRAFT

CALENDAR PAGE	004
MINUTE PAGE	20

- (b) "Waterway" means any body of water flowing, either continuously or intermittently, through a water course, including but not limited to, rivers, sloughs, streams, and creeks.
- (c) "California Rivers Riparian Parkway Plan" means a Plan developed pursuant to Chapter 3 (commencing with Section 9004).
- (d) "Commission" means the State Lands Commission.

Chapter 3. California Rivers Riparian Parkway Plans

Section 9004. There is within the State Lands Commission, the California Rivers Riparian Parkway Program. The Commission shall advise and consult with local governments and review and approve proposals for the development of California Rivers Riparian Parkway Plans developed and submitted for financial assistance pursuant to this chapter. The Commission shall also administer funds granted to create and implement such Plans.

Section 9005. Proposals submitted to the Commission pursuant to Section 9004 shall, to the extent feasible, provide for:

1. preservation, maintenance, and restoration of riparian habitat values;
2. public access and river front recreation;
3. fishing and other forms of water oriented recreation;
4. flood control activities and facilities;
5. enhancement of fisheries habitat, spawning areas, and the like; and
6. enhancement of commercial and recreational navigation.

Section 9006. The Commission shall develop standards and specify elements to address, in proposals for the preparation of local government Plans, pursuant to Sections 9004 and 9005. Such elements shall include, but are not limited to:

1. a statement of the purpose(s) and the goals and objectives to be achieved through the preparation of a Plan;

December 19, 1990

3

DRAFT

CALENDAR PAGE	005
MINUTE PAGE	21

2. a description of the waterway or portion thereof which the Plan is to apply;
3. a description of the public uses and resources which may be protected, improved or restored;
4. a description of existing land uses along the waterway;
5. an identification of parcels or resources along the waterway presently owned or used by public agencies within the area which is to be addressed by the Plan;
6. the level of financial support the local government can provide for the preparation of the Plan; and
7. a description of the proposed planning process.

Section 9007. Upon its approval of a proposal, the Commission may elect, among other actions, to:

- (a) identify areas of title uncertainty and make all reasonable efforts to resolve them;
- (b) take no action which will adversely affect the ability of the local government to develop a Plan. Applications for new leases of State lands within or potentially affecting the planning area may not be granted until the Plan is completed and such applications are determined by the Commission to be consistent with and in furtherance of the provisions of an approved Plan;
- (c) provide technical assistance to the local government during Plan development in such areas as defining the legal requirements relating to access and the public trust, preservation and restoration of riparian habitat, and recreational activities or facilities which are consistent with riparian habitat and the public trust.

Section 9008. The Commission's approval of a proposal shall also provide for the financial participation of the State in the preparation of the Plan. Funds for this purpose shall

be allocated by the Commission to the local government sponsors of a Plan from the fund created in Section 9011 of this Act. The State may provide up to fifty percent (50%) of the cost of preparing the Plan. The Commission, at its discretion and upon the application of the local government, may provide a greater percentage of monies necessary for the preparation of the Plan.

Section 9009. During the preparation of the Plan, the local government and the Commission shall consult and cooperate with other State and local governments. The State agencies shall include, as appropriate:

- (a) the Coastal Conservancy;
- (b) the Wildlife Conservation Board;
- (c) the Department of Fish and Game;
- (d) the Department of Parks and Recreation;
- (e) the California Department of Forestry and Fire Protection;
- (f) the Reclamation Board;
- (g) the Department of Water Resources; and
- (h) the Department of Boating and Waterways.

Section 9010. Plans shall be submitted to the Commission for approval and funding within five years of the Commission's approval of a proposal. Plans submitted to the Commission for approval and funding consideration shall be in the form of a proposed amendment to the local general plan and contain, at minimum:

- (a) a description of the waterway's present resources, including quantification and delineation of riparian habitat;
- (b) a listing and delineation of existing public land ownership within the planning area, including lands of special districts such as park, levee, reclamation and flood control;
- (c) habitat and recreation elements which shall specify:

December 19, 1960

DRAFT

CALENDAR PAGE	007
MINUTE PAGE	23

1. the location(s) of existing and anticipated recreational facilities such as trails of any type, rest areas, and fishing and boating access;
2. areas of the planning area designated for maintenance of existing and restoration of riparian habitat and procedures to resolve conflicts between such habitat and recreational uses;
3. measures to protect native plants and enhance wildlife, including rare, threatened and endangered species and species of special concern;
4. on site mitigation measures to avoid or to offset any loss of riparian habitat or other wildlife habitat which may result from the Plan's implementation;
5. a maintenance program which addresses the long term use and care of riparian habitat and physical improvements within the planning area.

- (d) specific policies and implementation measures. 1) for each of the provisions of Section 9005; and 2) which prevent or lessen potential conflicts with agricultural activities and incorporate, to the maximum extent feasible, consistent with the Plan, existing or planned flood control activities;
- (e) a listing of all individuals, groups, agencies and academic institutions consulted during the preparation of the Plan; and
- (f) a proposed implementation schedule which specifies each phase, its cost and the total budget for the Plan.

December 19, 1990

6

DRAFT

CALENDAR PAGE	008
MINUTE PAGE	24

Chapter 4. Natural Resources Restoration and Development Fund

Section 9011. There is hereby created in the State Treasury, the Natural Resources Restoration and Development Fund. Monies to be deposited in the Fund may be from: (a) a source to be designated by the Legislature; (b) grants to the Commission; (c) gifts and bequests; (d) bond measures; (e) sources as otherwise provided by law; and (f) revenues from lease administration as specified in Section 9017(c) of this Act. Monies within the Fund shall be continuously appropriated to the Commission without regard to fiscal year for financial assistance to local governments as provided by this Act to create and implement Plans, including the acquisition of land(s) or interest in land(s), and for the reasonable expenses of the Commission in the administration of this Act.

Chapter 5. Plan Evaluation and Approval

Section 9012. The Commission shall review all Plans, including those that exist prior to the effective date of this Act, which are submitted by local governments to determine their conformance with the provisions of this Act. The Commission shall, as appropriate, provide a written evaluation for any submission which shall specify those changes necessary to bring a Plan into conformance.

Section 9013. Upon its approval by the Commission, local government sponsors of a Plan will be eligible to receive monies from the Fund. Before the Commission may disburse funds, the Plan must be adopted by the local government as an amendment to its general plan. Allocations from the Fund may be used by local governments for such purposes specified within the approved Plan. Such purposes may include the acquisition of land(s) or interests in land(s), maintenance or restoration of riparian habitat or other habitat, or for recreational facilities. All title to land(s) purchased with monies from the Fund shall pass to the State and be retained as land with the legal character of sovereign tide and submerged land(s). If necessary for

December 19, 1990

7

DRAFT

CALENDAR PAGE	009
MINUTE PAGE	25

implementation of the Plan, the State may lease those tide and submerged lands to the local government and other entities.

Section 9014. The Commission shall make grants, as money is available, to implement approved Plans. Any local government that expends monies appropriated from the Fund for environmental restoration or improvement projects shall, to the extent feasible, utilize the services of the California Conservation Corps and local conservation corps in such efforts.

Section 9015. As a condition to the receipt of funds, the local government shall agree that it will reimburse the State for such funds if the Commission finds, after notice and public hearing, that an approved Plan has not been followed or implemented by such local agency. No Plan may be amended without the consent of the Commission.

Section 9016. In any one fiscal year, no Plan shall receive monies in an amount greater than twenty percent (20%) of funds appropriated from the Fund for that year.

Chapter 6. Plan Implementation

Section 9017. The Commission shall exercise its existing authorities to administer sovereign lands within the bounds of an approved Plan in a manner consistent with and in furtherance of said Plan. Specifically:

- (a) State lands within the area of the Plan shall be leased only for purposes consistent with the Plan.
- (b) The Commission shall ensure that existing lessees conduct their activities in a manner supportive of the Plan.
- (c) Income from State leases within an approved Plan shall be deposited in the Fund established by Section 9011 and may be released to the sponsoring local government for purposes consistent with its Plan.
- (d) Monies from title settlements which occur within an area covered by an approved Plan shall also be deposited in the Fund and may be allocated by

December 19, 1990

8

DRAFT

CALENDAR PAGE	010
MINUTE PAGE	26

the Commission for the purchase of additional land(s) within the affected Plan. Such land(s) shall be used for purposes consistent with the Plan and shall be governed by Section 9013 of this Act.

Section 9018. All local government revenues attributed to facilities or activities within an approved Plan shall be used for the administration of such Plan.

Chapter 7. Reports

Section 9019. The Commission shall advise the Legislature whenever monies are allocated from the Fund.

Section 9020. The Commission shall file reports annually with the Governor and the Legislature. Such reports shall include a description of Plans which are being prepared, the status of Plans which have been approved, monies allocated from the Fund by recipient, and Fund status.

Section 9021. Local governments receiving monies from the Fund shall. 1) file semi-annual progress reports with the Commission which also provide an accounting of Fund monies; and 2) maintain adequate records which shall be made available for audit by the Commission at its request.

SURVEY OF CALIFORNIA RIVER PARKWAY EFFORTS
December 17, 1990

WATERWAYCONTACT AGENCY AND STATUS

American River	Sacramento County, Parks and Recreation Dept., Gene Andal. Parkway completed, although additional land and private in-holdings still need to be acquired. Additional recreational improvements also needed.
Big Chico Creek	City of Chico, Kevin Cunningham. Bidwell Park Master Plan adopted Jan. 1, 1990. Council has approved "eminent domain" proceedings to acquire additional park lands (1450 acres) for \$650,000.
Bubbling Springs Stream Park	SLC, Dwight Sanders. MOU in progress. Parkway in Fort Hueneme has been established; expansion proposed that will include a pedestrian bikeway along beach. Limited riparian habitat. Estimated completion of extension- Spring 1991.
Cache Creek	BLM, Catherine Cunningham. BIM has been trying to secure federal funding for the past two years for planning, implementation, and land acquisition. BLM has been meeting with local jurisdictions in Lake County, attempting to draft a Coordinated Research and Management Plan.
Coyote Creek	Santa Clara County Parks, Felix Errico. 17 mile creek. Developing equestrian and hiking trails. Programming phase approved. \$10 million needed to fund recreational development, including land acquisition. 1000 acres of potential park land also identified; \$4-5 million needed for future land acquisition.
Guadalupe River	City of San Jose, Redevelopment Agency, Robert Ryan & Ken Talbott. City and Corps of Engineers working on flood control project. Current fiscal year federal funds have been appropriated for Phase 1, the General Design Memorandum, which will be issued Jan. 4, 1991. Trail system included. An EIR, "Locally approved plan" was approved Fall 1989. Locals provide land, bridges, utilities, the Corps provide everything else. The total cost of the flood control portion of the project, including land acquisition and construction, is \$124 million. Guadalupe River 3/4 of the

Guadalupe River
(Continued)

cost of the project is for land acquisition (one acre= \$1 million). Last year Santa Clara County provided \$14 million to purchase land adjacent to the river for the Parkway, separate from the flood control project. The City needs an additional \$15 million for land acquisition to complete the Parkway. The riverpark extends three miles; one half (1200') of its trail system has been completed.

Kern River

City of Bakersfield, Jim Movius. Parkway Plan adopted June 1988. EIR included with plan. Community support has increased after adoption. Receiving state grants, need more. Substantial volunteer participation in tree planting & trail improvements. 10 year timeline: 10% on ground now, arranged for funding another 10% next fiscal year. Recreation areas being minimally developed.

Kings River

City of Reedley, Michael Olmos. Corridor Specific Plan completed, Planning Commission approval, City Council will conduct hearing Jan. 8, 1991. Riparian reforestation emphasized in plan. Land acquisition will be pursued through 1) dedication trade-off deals with developers, and 2) purchases via Quimby Act Ordinance. Future widening of parkway envisioned, additional monies for land acquisition will be needed. Kings River Community College adjacent to river should provide additional park area access.

Laguna de
Santa Rosa

Sonoma County, Kim Cordell, consultant. Joint effort of Sonoma County and the City of Sebastopol. Involves a 50-acre parcel along a tributary of the Russian River. Early planning stages.

Los Angeles River

L.A. County, Jim Park. City/ County committee has been formed. Study phase just beginning. Meeting Nov. 29, 1990. Formal task force will probably be formed June 1991. Recreation and public works personnel participating (riparian habitat, flood control, trail systems). Funding will be sought within 3-5 years.

- Mission Creek** Urban Creeks Council (UCC), Stephen Stanley. City of Santa Barbara and Corps of Engineers propose channelization for creek. Corps has received money for design funding. UCC opposes channelization, wants natural stream and recreational use instead. UCC beginning to develop informational database for other natural streams in area.
- Mojave River** Referenced by Gerry Newcombe, San Bernardino County. Conceptual stage.
- Mokelumne River** City of Lodi, Scott Essin. City trying to establish river parkway, but north bank of river is in San Joaquin County. County will soon hold public meetings on parkway. City has existing park and nature area on south bank.
- Napa River** Napa County Flood Control and Water Conservation District, Bob Sorsen; City of Napa, Parks Dept., Marla Young. Corps of Engineers has concluded favorable cost benefit assessment for flood control project. City hiring consultant to review findings. City of Napa participating with district and Redevelopment Agency to develop a recreation plan overlay. Goals and objectives under discussion at present (November 1990). Corps will provide 50% of funding, splitting costs for "recreation betterments."
- Navarro River** #2M Associates, Patrick Miller. Parkway in conceptual stage. Anderson Valley Land Trust being formed. River flows through unincorporated portions of Mendocino County.
- Petaluma River** City of Petaluma, Warren Salmons. Coastal Conservancy has received scope of work, expected to give the City \$400,000 that has been legislated for this planning effort by March 1991.
- Putah Creek** UC Davis, Kerry Dawson. Management Plan completed 1985, recent land purchases (Russell Ranch) necessitate plan modifications. \$2 million from Proposition 70 used to acquire land. State Parks grant for access trails recently turned down. Relation to City of Davis Greenway Plan cited. Contentious relationship with Solano Irrigation District.

Russian River State Parks and Recreation, David Boyd. Study proposed to examine breaching sand bar at river's mouth at Sonoma Coast State Beach in Sonoma County. Water level and wetland flooding occur when mouth of river is "clogged." Bio-management issue.

Sacramento River State Lands Commission, Kata Bartoloni. Planning effort in progress. SLC/local government MOU will be presented for Commission approval in January 1991.

St. John's River City of Visalia, Ginger Strong. Master Plan adopted Oct. 1989. City has acquired all lands. 90% of trails completed. City using Prop. 70 monies. Trying to link parkway with Nature Conservancy properties. Effort underway to expand park by purchasing 1200 acre parcel now held in private trust.

Salinas River Monterey County Flood Control & Water Conservation District, Pete Koehn. 50% of Management Plan developed, final plan expected December 1991. Breaching river mouth proposed, slidegate replacement, levee clean up. District has hired a habitat restoration consultant. District will apply for funding for future "enhancements", Coastal Conservancy has given \$80,000, State Parks & US Fish and Wildlife \$30,000.

San Benito River San Benito County, Peter Chamberlain. This river hasn't flowed for 4 years. The river is not navigable; the riverbed is privately owned and is being mined for gravel. Landscaping plans are a condition of use for mining projects.

San Dieguito River San Diego Joint Powers Authority (JPA), Susan Carter. Draft conceptual plan has been approved by JPA. A Regional Park Planning Area has been defined covering 60,000 acres, 55 miles in length. Land acquisition efforts are ongoing. Lagoon expansion and restoration. Hydrological studies are also being conducted. JPA needs "milestones" to increase project momentum.

- San Joaquin River** San Joaquin River Parkway and Conservation Trust, Dave Koehler. Final conceptual plan to be issued June 1991, to be adopted by local jurisdictions, (Fresno City, Fresno County, and Madera County) by Dec. 1991. \$1 million out of \$5 million of Prop. 70 monies has been spent on the Parkway. It is anticipated that an additional \$50 million will be needed to implement the conceptual plan.
- San Lorenzo River** City of Santa Cruz, Redevelopment Agency, Joe Hall. Conceptual Plan adopted by City Council Dec. 1989. Flood control project, Corps of Engineers funding feasibility study and construction costs.
- San Luis Creek** City of San Luis Obispo, James Stockton. City has established park setting and walkways along creek with linkage to Mission Plaza. Conceptual plans for extension of stream park are being developed. City Council is supportive.
- San Rafael Canal** City of San Rafael, Redevelopment Agency, Katie Korzun. City buying land for expansion of pedestrian walkway. Parkway part of General Plan. Canal Front Plan will be produced fiscal years 1991-1992.
- Santa Ana River** San Bernardino County, Regional Parks Dept., Gerry Newcombe. Master Plan completed Aug. 1990. Adoption by local jurisdictions is pending. Tri-county regional park extending 120 miles is 90% completed in Orange Co., 50% completed in Riverside Co., and now getting underway in San Bernardino County, which is searching for funding. Requesting Caltrans funding for sidewalk/bikeways. National Park Service provided technical assistance for planning work. US Forest Service manages National Forest adjacent to river. San Bernardino Co. Board will review Plan in Feb. 1991, and should adopt by March 1991.

Tijuana River
(et al)

San Diego County, Ann Rast. \$10 million of Prop. 70 monies earmarked for Tijuana River Valley. Riparian habitat identified, attempting to establish river corridors and beltways. Recent \$100 million bond ballot defeated. A framework plan has been developed for the Tijuana River; Otay Valley- joint staff conceptual plan underway, no funding yet; San Luis Rey River- conceptual stage; Santa Margarita River- included in Camp Pendelton plan.

Tule River

City of Porterville, Gil Meacham. City has hired a consultant to begin drafting a Tule River Parkway Plan. Park will extend 7 miles. Developer dedications needed; there are no existing public lands. Important Kit Fox habitat has been identified. Public hearings process for Parkway beginning. A Parkway schematic plan will be reviewed Jan. 3, 1991, and the Parkway Conceptual Plan will be up for approval and adoption by April 1991.

Ventura River
Estuary

City of San Buenaventura, Recreation Division, Beth Cohen. City ready to hire consultant to develop enhancement plan for the Ventura River Estuary Enhancement Project. City owns 23 acres; project will emphasize habitat restoration. State Parks and Coastal Conservancy participating in adjacent projects (Seaside Park/Surfers Point, Emma Woods State Park). Future responsibility for management of project unclear.

CALIFORNIA RIVERS RIPARIAN PARKWAY PROGRAM

FUNDING SOURCES

**DIRECT FUNDING SOURCES
FOR THE NATURAL RESOURCES RESTORATION AND DEVELOPMENT FUND**

PROPOSED BOND MEASURES

California Rivers Riparian Parkway Bond Act of 1992 (Cortese)

Provides for \$100,000,000 in bonds to finance a specified program (read: SLC California Rivers Riparian Parkway Program) for the acquisition, development, rehabilitation, restoration, and preservation of river riparian parkway projects.

California Park, Recreation, and Wildlife Enhancement Act of 1992 (Cortese)

Provides for \$40,000,000 in bonds for the acquisition, development, maintenance or restoration of river riparian parkways (read: SLC California Rivers Riparian Parkway Program).

EXISTING STATE FUNDS

California Environmental License Plate Fund

- o Administering agency: Resources Agency.
- o Major source of funds: Sale of personalized license plates.
- o Disposition of funds for DMV administration and for the Environmental Protection Program. The Environmental Protection Program pertains to preserving and protecting the environment, including air pollution caused by motor vehicles.

Public Resources Account, Cigarette and Tobacco Products Surtax Fund (Proposition 99)

- o Administering agency: Department of Health Services.
- o Major source of funds: Five percent of the funds received in the Cigarette and Tobacco Products Surtax Fund is deposited in the Public Resources Account.
- o Disposition of funds for:
 1. Programs to protect, restore, enhance, or maintain fish, waterfowl and wildlife habitat.
 2. Programs to enhance state and local park and recreation resources.

Land Bank Fund, Pursuant to the Kapiloff Land Bank Act

- o Administering agency: State Lands Commission
- o Major source of funds: Title settlements; amount available varies.
- o Disposition of funds for land acquisition only. The lands acquired take on the legal character of sovereign lands.

**SUPPLEMENTAL FUNDING SOURCES
FOR THE CALIFORNIA RIVER RIPARIAN PARKWAYS PROGRAM**

FEDERAL AGENCY PROGRAMS

Bureau of Land Management (BLM)

1. Riparian Areas Habitat Program

U.S. Fish and Wildlife Service (USFWS)

Creates and administers refuges. Also protects threatened and endangered species.

Bureau of Reclamation

Operates major water projects, beginning mitigation program.

U.S.A. Corps of Engineers

New direction that is environmentally sensitive.

Environmental Protection Agency (EPA)

1. Wetlands Strategies and State Programs

National Oceanic and Atmospheric Administration (NOAA)

Matching grants available for land acquisition.

Soil Conservation Service (SCS) & Agricultural Stabilization and Conservation Service (ASCS)

1. Conservation Reserve Program

Other sources of acquisition funding:

1. Federal Land and Water Conservation Fund

STATE AGENCY PROGRAMS

Department of Water Resources (DWR)

1. Urban Streams Restoration Program
2. Environmental Water Program, AB 444 Isenberg, (1989)

Reclamation Board

Acquires land for flood control projects & mitigation parcels.

State Coastal Conservancy

Grants for acquisition and restoration.

Department of Fish and Game (DFG)

Acquisition funds from Proposition 7c.

Wildlife Conservation Board (WCB)
Land acquisition funds from Proposition 70 and 117 (see below).

Department of Forestry
Operates state nurseries, responsible for waterways protection during logging.

California Conservation Corps
Personnel provided for restoration, operates native plant nurseries.

RELATED STATE PROPOSITIONS AND BILLS

California Wildlife, Coastal, and Park Land Conservation Fund of 1988 (Proposition 70)

- o Administering agencies: Department of Parks and Recreation, Wildlife Conservation Board, State Coastal Conservancy, Department of Fish and Game, Department of Forestry, Department of Water Resources, Santa Monica Mountains Conservancy, and the County of Monterey.
- o Major source of funds: \$726,000,000 in bonds to be divided among the above agencies as specified in the California Wildlife, Coastal, and Park Land Conservation Act.
- o Disposition of funds for the acquisition, development, rehabilitation and restoration of park lands, beaches, wildlife habitat, coastal, and natural lands in California.

Habitat Conservation Fund (Proposition 117)

- o Administering agencies: Department of Parks and Recreation, State Coastal, Tahoe and Santa Monica Mountains Conservancies, and Wildlife Conservation Board.
- o Major source of funds: \$30,000,000 annually (for 30 years) from existing environmental funds (names the Public Resources Account in the Cigarette and Tobacco Products Surtax Fund, the California Environmental License Plate Fund, Fish and Game Preservation Fund, Wildlife Restoration Fund, and State Coastal Conservancy Fund) and the General Fund.
- o Disposition of funds for acquisition of deer and mountain lion habitat, rare and endangered species habitat, wetlands, riparian and aquatic habitat, open space, and other environmental purposes.

Environmental Water Program (AB 444)

- o Administering agency: Department of Water Resources.
- o Major source of funds: \$7,000,000/year from 1991-1995 and \$8,000,000/year from 1995-1999 from the legislature to the Environmental Water Fund.
- o Disposition of funds to preserve the wildlife and environment of the Mono Lake Basin, as a first priority. Other purposes eligible for funding include fisheries restoration on the Upper Sacramento and San Joaquin Rivers and elsewhere, wetlands acquisition and restoration on the Pacific Flyway and elsewhere, and riparian habitat acquisition and restoration on the Sacramento and San Joaquin Rivers, the Delta, and elsewhere.

PRIVATE ORGANIZATIONS

The Conservation Fund

The Nature Conservancy

Trust for Public Land

MULTI-AGENCY PROGRAMS

Upper Sacramento River Fisheries and Riparian Habitat Management Plan (SB 1086)--\$1,300,000 for recreation and habitat management planning.

San Joaquin River Management Program (AB 3603, Costa)--\$250,000 for Resources Agency for planning.