

MINUTE ITEM

This Calendar Item No. 26  
was approved as Minute Item  
No. 26 by the State Lands  
Commission by a vote of 2  
to 0 of its 9/27/90  
meeting.

MINUTE ITEM

26

9/27/90

W24394

PRC 7457

FONG

PUBLIC AGENCY PERMIT - PROTECTIVE STRUCTURE

Consent Calendar Item Number 26, was removed from the consent calendar and put on the Regular Calendar.

Charles Warren, Executive Officer, presented Calendar Item 26, attached. This is a public agency permit for the construction of a protective structure; an extension of an existing gabion wall designed to protect the toe of the berm existing at the Portuguese Bend Landslide.

In the past, for reducing erosion, approximately 800 feet of gabion berm was permitted and now exists. An additional 1,600 feet for extension to the gabion wall is being requested. All reviewing agencies and the Coastal Commission have approved.

Lois Knight Larue of Lois Larue and Associates, appeared before the Commission to inform the State Lands Commission of what is happening in Rancho Palos Verdes. Ms. Larue provided the Commission with a copy of an article in The Monitor, February, 1989, to help better understand what is happening at Rancho Palos Verdes.

The staff's recommendation is that the Commission approve the Negative Declaration and authorize issuance of a lease to the City of Rancho Palos Verdes Redevelopment Agency for five years, subject to having to get approval of the Coastal Commission for renewal after two years. With that Calendar Item 26 was approved subject to those conditions.

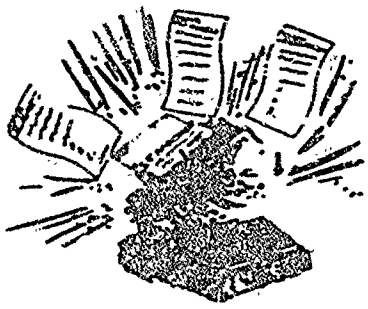
The Commission voted 2-0 to approve the Item subject to the conditions.

Attachment: Calendar Item 26.

A 51

S 29

CALENDAR PAGE	_____
MINUTE PAGE	<u>2755</u>



# THE MONITOR

BE THE PEOPLE

And our Two Cents Worth...

FREE

Vol. 2 No. 1

FEBRUARY, 1968

## WHAT MAKES A DUCK A DUCK?

By ENRICA STUART

COUSCILLAN DOUGLAS H. MINCHLIFE, our "I am not a developer" executive Vice President of LONE ASSOCIATES, might find it difficult to explain this, but in any event, we wish to congratulate his parent company, LONE ENTERPRISES on their new venture. Lone Enterprises recently bought 112 acres of industrial land in downtown Los Angeles—the largest downtown land sale for 1968.

According to the Los Angeles Business Journal the "Brentwood based-developer, in a joint venture with the Boston-based New England Mutual Life Insurance Co., bought the land in the downtown Producers District.

An official from Lone, stated that the developers plan to renovate the Union Terminal produce market—which has been renamed Seventh Street Market.

According to an interview by the Journal, Lone specializes in distressed property. It also is involved in building \$200 million Free Place in Orange County, which will include an Embassy Suites hotel and a three story shopping center.

Mr. Lone has a multitude of interests and has been extremely successful. In 1973 he founded Destination Resorts Corp., a company that built apartment houses, resort condominiums and mobile-home parks.

At the present time Lone Enterprises owns or manages \$1.5 billion in real estate.

While Couscillian Minchlife is executive vice president of the property management division, we find the disclaimer to the word "developer" a bit hard to swallow. Surely Mr. Minchlife's loyalty is to his entire company not only a segment of it.

ENRICA STUART, HOLDS A Ph.D IN GOVERNMENT AND ECONOMICS FROM CLAREMONT AND IS EDITOR OF THE MONITOR

THE MONITOR IS ONE YEAR OLD. WE HOPE YOU LIKE US.

### Don't You Believe It!

By ENRICA STUART

After three years of deliberation by 128 prominent civic and business leaders the Committee on Los Angeles 2000 released the Final Report, with proposals and recommendations for the future of Los Angeles and most of southern California.

Reorganizing five counties in Southern California to meet the needs of the year 2000 seemed to be quite a task. Therefore, I was a bit surprised when the Final Report turned out to be only 96 pages, most of them graphics.

Given the real purpose of the Report, keeping it short and vague is the best way to slide it through the cracks of public inattention and limited involvement. But if what is proposed in these 96 pages does slip through, it will be the beginning of the end of local representative government and voter participation in the decision-making process as we know it.

In essence, what the Report states is that in order to solve problems such as, gangs, drugs, crime, pollution, congestion, traffic, homelessness and the need for affordable housing, we must develop "livable communities suitable for the 21st century." To develop these livable communities, "The Government and the state Legislature should establish a...Growth Management Authority (GMA) made up of either directly elected office holders or a constituency organization of locally elected officials, with the responsibility and authority to set overall policy and guidelines for development with area-wide impacts. The GMA would enable better coordination and integration of local governments' planning and land use decisions and could provide a solution to the "not-in-my-backyard" (NIMBY) attitude that all residents share to some degree..."

Elected or not, it is obvious that such an Authority will curtail the power of the residents to partici-

ipate in the decision-making process.

We have all heard of the remark "You can't fight city hall" but can you imagine trying to be heard at a hearing (assuming they will even have hearings) of the GMA, located somewhere within the five counties they represent and run by people who may or may not have a personal involvement with Palms Verdez and its problems?

People usually incorporate into cities because they feel that county government is too distant from their local problems. Now they are proposing a five-county government!

And that is not all. Here are some of the other innovations they have in store for us:

"The state legislature should establish a statewide GOVERNMENTAL RESTRICTING COMMISSION for the South Coast to recommend ways to restructure government agencies at the city, county and district levels in order to define authority and responsibility for regional problems..."

The Report calls for the state legislature to modify state laws in order to provide for a continuous stable source of funding by adjusting or eliminating "...most tax-specific constraints on local revenue-raising powers...Article XIII B already assures fiscal accountability...proposition 13...is no longer necessary..."

But Article XIII B should also be revised, according to the Report, in order to provide a new formula for "...calculating expenditure limits...to closely track increases in demand for services...." To achieve this it is necessary to "Reduce all tax or expenditure referenda decisions to single majority rules. Local governments should be empowered to...employ user fees to finance local government-run enterprise activities (like water, sewer and electricity but not public safety)..."

PLEASE SEE 2060 PG 2/CL.1

### The Rape Of Barkingine Canyon

By LOIS LARUE

In September of 1963, we moved to Abalone Cove having bought the last house at the top of Barkingine Road, part of which sits on landfill on the side of Barkingine Canyon. For ten years we enjoyed walking up into the natural beauty of the canyon.

In 1973 children playing in the Kelling Hills area started a fire which swept down into Portuguese Bend and burned homes there, then raged across the hillside, and was finally contained not far from where we live.

As a result of that fire, Los Angeles County Flood Control, fearing that the Barkingine hillside would slip, built three huge debris basins at the foot of Barkingine Canyon and Eagle's Canyon.

For another five years we enjoyed the beauty of the canyon as the natural vegetation re-established itself.

#### THEN CAME THE DEVASTATION:

The City Council, on the recommendation of its Planning Department headed by Sharon High-tower had approved a developer's plan to build a storm drain at the top of Barkingine Canyon as a channel for runoff from the Pressley Development.

Los Angeles County engineers, under contract to the city, approved the project, and began channeling runoff from the Pressley Development down Barkingine Canyon.

On Tuesday, July 21, 1981, the Rancho Palms Verdez City Council officially transferred the storm drain to Los Angeles County for maintenance.

My readers grew to share and I began, seriously, researching the problem in an effort to comprehend the potential consequences of the runoff. SEE PAGE PG.2/CL.1

CALENDAR PAGE 2  
MINUTE PAGE 256

At the Los Angeles County Engineering Office downtown on Vermont I spoke with Supervising Civil Engineer Murphy who had been in charge of the project. He assured me that we were NOT getting any more run-off than before. Why then was the debris basin filling?

Why did flood Control Division bring in a string of huge Jeep trucks on at least two separate occasions and remove approximately 2,000 cubic yards of dirt, sand, rocks, and debris which had been carried down the canyon by the force of the run-off after the storm drain was installed at the top?

I presented the results of my investigation to the city council and by a vote of 3 to 2 (Ryan, Sydn, and Hain in favor; Bacharach and Shaw opposed), the council voted to order the Department of Public Works to investigate the Barrentine Canyon problem. Carl Abel, who I was told, had been called in by Roy Jurgensen Associates, then consultants to the city, to supervise Charlie A. ... walked into the canyon with Perry Ehlig, the city's consulting geologist. He submitted a report entitled "Barrentine Canyon Erosion Report," which reads, in part:

"Er. Ehlig stated that any erosion which would take place due to the development and out-fall had already occurred. He did not feel that there would be any serious future problems."

When I began my investigation I called Dr. Ehlig to come and see the problems in Barrentine Canyon. He brought Charlie Abbott with him. We stood at the bottom and looked up at the top of the canyon. Charlie Abbott said Dr. Ehlig they had put a storm drain in to carry run-off from the Pressley Development down the canyon. Dr. Ehlig responded in evident astonishment: "You did WHAT?"

THE DEVASTATION ACCELERATED. In 1983 the waters in Barrentine Canyon ... not the waters of Deadman's Canyon flowing down into Lower Abalone Cove, contained down Picket and through two homes on the bluff at Sea Cove. After one storm, Barrentine Canyon beyond Barrentine Cove at the way we backed up behind the debris basin.

The city council had voted to investigate the problem. The Los Angeles County Supervising Engineer, the Director of Public Works, the former Director of Public Works, the city geologist, ... one told us there was no problem. What we had was more water coming down Barrentine than we had

SEE RAFE PG. 3/CL. 4

before--well, maybe 32 cars, maybe 32 cars? And this while the canyon's walls disintegrated before our eyes.

I called DONALD CALES, author of "Handbook of Wildflowers, Woods, Wildlife, and Weather" of the Palos Verdes Peninsula in the hope that he could tell me of the heavy rains of 1977-78 were hundred-year rains. "They were," he said, "whereupon my years of anguish and uncertainty and inability to understand what my eyes were happening and what the city authorities all denied, caused me to pour out my story into Donald Cales's perceptive ears."

He pulled out the book "INTRODUCTION TO PHYSICAL GEOLOGY" by UCLA's Professor William J. Miller, noting if I had heard of the LAW OF THE TRANSPORTATION OF WATER. I had not, but--most important--Ferry Ehlig and Carl Abel and Charlie Abbott and Kenneth Murphy had not, or did not know.

THE LAW OF THE TRANSPORTATION OF WATER STATES:

"Even a moderate increase in the velocity of a stream increases about INCREDIBLY its power to transport sediments."

"THE TRANSPORTING POWER OF A CURRENT VARIES AS THE SIXTH POWER OF THE VELOCITY. THE CURRENT WHICH IS JUST ABLE TO MOVE A ROCK MASS OF A GIVEN SIZE WILL, WHEN ITS VELOCITY IS ONLY DOUBLED, BE ABLE TO TRANSPORT A MASS OF SIMILAR ROCK 64 TIMES AS LARGE BECAUSE 2 TO THE POWER OF SIX IS 64. SINCE THE SIXTH POWER OF 3 IS 729, IT FOLLOWS ACCORDING TO THIS LAW THAT BY TREBLING THE SWIFTHNESS OF A CURRENT ITS TRANSPORTING POWER IS INCREASED 729 TIMES."

This was the information which prompted the city council to vote to investigate Barrentine Canyon. And later one of the city councilpersons told me personally: "We know we made a mistake, but we don't have the money to correct it."

Ironically, it was Perry Ehlig, the city's consulting geologist, who pointed out to me that there WAS a slide at the TOP of Barrentine Canyon (the City already knew about the slide at the south of the canyon, but in news releases referred to it as "slippage.") The Pressley developer had cut a road across the hillside to the bottom of the storm drain, a road which paralleled the terrace upon which the Pressley development sits.

The road was already slipping when Perry Ehlig noticed it, and today, 8 years later, that road can still be

seen from Palos Verdes Drive South. It is closer to being vertical than horizontal.

The same pattern of irresponsible behavior was evident in the Abalone Cove Landslide. This one involved Altamira Canyon where the city council had approved a storm drain "wide as large as the one at Barrentine to accommodate the demands of the Cayona and Surrall developments. Thousands of cubic feet of water thunder down the canyon into Abalone Cove--making its way through a well-known slide area!"

In 1976 my son had discovered the reactivation of the ancient Abalone Cove landslide. A front-page report, with pictures, appeared in the Palos Verdes Peninsula News. I reminded the council of this fact, but still they approved more new development and drainage into Altamira.

When the houses in Portuguese Bend began to slide, the City of Rancho Palos Verdes formed the Abalone Cove Landslide Abatement District, and annually assesses the residents there thousands of dollars to develop--now THAT is chutzpah!

LESLIE LARSEN IS A GRADUATE OF MICHIGAN COLLEGE AND WAS DIRECTOR OF ADMISSION AND LECTURES AT MICHIGAN FROM 1943 TO 1979. SHE STUDIED LAW AT THE UNIVERSITY OF ALABAMA. LARSEN HAS HELD POSITIONS IN THE LOS ANGELES DISTRICT ATTORNEY'S OFFICE AND THE LOS ANGELES PUBLIC DEFENDER'S OFFICE.

MINUTE ITEM  
This Calendar Item No. C26  
was approved as Minute Item  
No. 26 by the State Lands  
Commission by a vote of 2  
to 0 at its 9/27/90  
meeting.

CALENDAR ITEM

A 51  
29

**C 2 6**

09/27/90  
W 24394 EPC 7457  
Fong

PUBLIC AGENCY PERMIT - PROTECTIVE STRUCTURE

APPLICANT: City of Rancho Palos Verdes  
Redevelopment Agency  
30240 Hawthorne Boulevard  
Rancho Palos Verdes, CA 90274

AREA, TYPE LAND AND LOCATION:  
A strip of sovereign land in the Pacific Ocean  
in the City of Rancho Palos Verdes, Los Angeles  
County.

LAND USE: Use and maintenance of 744 feet of existing  
gabion wall and the construction, use, and  
maintenance of an additional 1,600 feet of  
gabion wall to protect the toe berm of the  
Portuguese Bend landslide from severe erosion  
caused by storm-generated wave action.

TERM OF PROPOSED PERMIT:  
Initial period: Five years beginning  
September 30, 1990.  
Special: This permit is subject to  
termination at the end of  
two (2) years from its  
beginning date, if the  
Applicant's California Coastal  
Commission's Coastal  
Development Permit is not  
approved for an extension.

CALENDAR ITEM NO. 026 (CON'D)

**CONSIDERATION:** The public benefit and safety; with the State reserving the right at any time to set a monetary rental if the Commission finds such action to be in the State's best interest.

**BASIS FOR CONSIDERATION:**  
Pursuant to 2 Cal. Code Regs. 2003.

**PREREQUISITE CONDITIONS, FEES AND EXPENSES:**  
filing fee and processing costs waived in consideration for the public benefit to be derived from this project.

**STATUTORY AND OTHER REFERENCES:**  
A. P.R.C.: Div. 6, Parts 1 and 2; Div. 13.  
B. Cal. Code Regs.: Title 2, Div. 3;  
Title 14, Div. 6.

**AS 884:** 03/11/91.

**OTHER PERTINENT INFORMATION:**

1. A Negative Declaration was prepared and adopted for this project by the City of Rancho Palos Verdes. The City determined that the project will not have a significant effect on the environment. The State Lands Commission's staff has reviewed such document.
2. The Portuguese Bend Landslide is affecting an area of nearly 1,200 acres since its initial movement began in 1956. This landslide has resulted in the destruction of 135 homes, continued maintenance of Palos Verdes Drive South, and total movement as much as 700 feet.

On the recommendation of the Portuguese Bend Technical Panel, a toe berm was constructed in early 1988, along the base of the landslide adjacent to the Pacific Ocean. This involved relocating 250,000 cubic yards of dirt from a steeply sloping unstable area to an area adjacent to the ocean, resulting in a reduction of sliding from 40 feet per year to three feet (3ft.) per year.

CALENDAR ITEM NO. 26 (CON'D)

Severe storms battered the coast of Southern California in the spring of 1988 causing severe erosion and possible undermining of the toe berm. The Redevelopment Agency decided to install a temporary gabion wall to protect the toe berm. The installation of the existing 744 feet of temporary gabions began September 1988 and was completed January 6, 1989.

Due to the success of the gabion wall in preventing erosion to the toe berm, the applicant has proposed the construction of gabions along the remaining toe of the Portuguese Bend Landslide. The gabions would extend along the shore approximately 1,600 feet beginning at the east end of the existing 744 feet of existing gabions. This would provide shoreline protection in the Portuguese Bend Landslide east of Inspiration Point to the Portuguese Bend Club Beach.

The gabions are a series of wire baskets filled with rocks. A filter fabric is placed between the existing soil and the gabions to prevent the soil from washing through the gabions. The baskets step up from the shore and are a total of nine feet deep by nine feet high. The area behind the gabions is proposed to be filled with landslide cobble with a soil cover placed on top. This will provide a 12-foot wide level area for access to gabions.

The Applicant desires to complete the gabion construction before the winter storm season. The Applicant is studying proposals for the funding and construction of a permanent protective structure.

**APPROVALS OBTAINED:**

City of Rancho Palos Verdes

**FURTHER APPROVALS REQUIRED:**

California Coastal Commission

**EXHIBITS:**

- A. Land Description
- B. Location Map
- C. Negative Declaration/Notice of Determination

CALENDAR PAGE 317  
MINUTE PAGE 2760

CALENDAR ITEM NO 26 (CON'D)

IT IS RECOMMENDED THAT THE COMMISSION:

1. FIND THAT A NEGATIVE DECLARATION WAS PREPARED AND ADOPTED FOR THIS PROJECT BY THE CITY OF RANCHO PALOS VERDES AND THAT THE COMMISSION HAS REVIEWED AND CONSIDERED THAT INFORMATION CONTAINED THEREIN.
2. DETERMINE THAT THE PROJECT, AS APPROVED, WILL NOT HAVE A SIGNIFICANT EFFECT ON THE ENVIRONMENT.
3. AUTHORIZE ISSUANCE TO THE CITY OF RANCHO PALOS VERDES REDEVELOPMENT AGENCY OF A FIVE-YEAR PUBLIC AGENCY PERMIT - PROTECTIVE STRUCTURE USE, BEGINNING SEPTEMBER 30, 1990, SUBJECT TO TERMINATION IN TWO (2) YEARS IF THE CALIFORNIA COASTAL COMMISSION'S COASTAL DEVELOPMENT PERMIT, APPLICATION NO. 5-90-636, IS NOT APPROVED FOR AN EXTENSION; IN CONSIDERATION OF THE PUBLIC BENEFIT AND SAFETY WITH THE STATE RESERVING THE RIGHT AT ANY TIME TO SET A MONETARY RENTAL IF THE COMMISSION FINDS SUCH ACTION TO BE IN THE STATE'S BEST INTEREST; FOR A GABION WALL PROTECTIVE STRUCTURE ON THE LAND DESCRIBED ON EXHIBIT "A" ATTACHED AND BY REFERENCE MADE A PART HEREOF.

CALENDAR PAGE	378
MINUTE PAGE	261

**EXHIBIT "A"**

**W 24394**

**LAND DESCRIPTION**

All that State owned sovereign land lying beneath the proposed and existing gabion shore protection as shown on the map "Shoreline Protection Project, City of Rancho Palos Verdes California Redevelopment Agency" dated November 27, 1989, a copy of said map is on file in file W 24394 in the office of the California State Lands Commission in Sacramento, California, said gabion shore protection being in the City of Rancho Los Palos Verdes, Los Angeles County, California.

**END OF DESCRIPTION**

**PREPARED SEPTEMBER 18, 1990 BY LLS.**

CALENDAR PAGE	379
MINUTE PAGE	2762



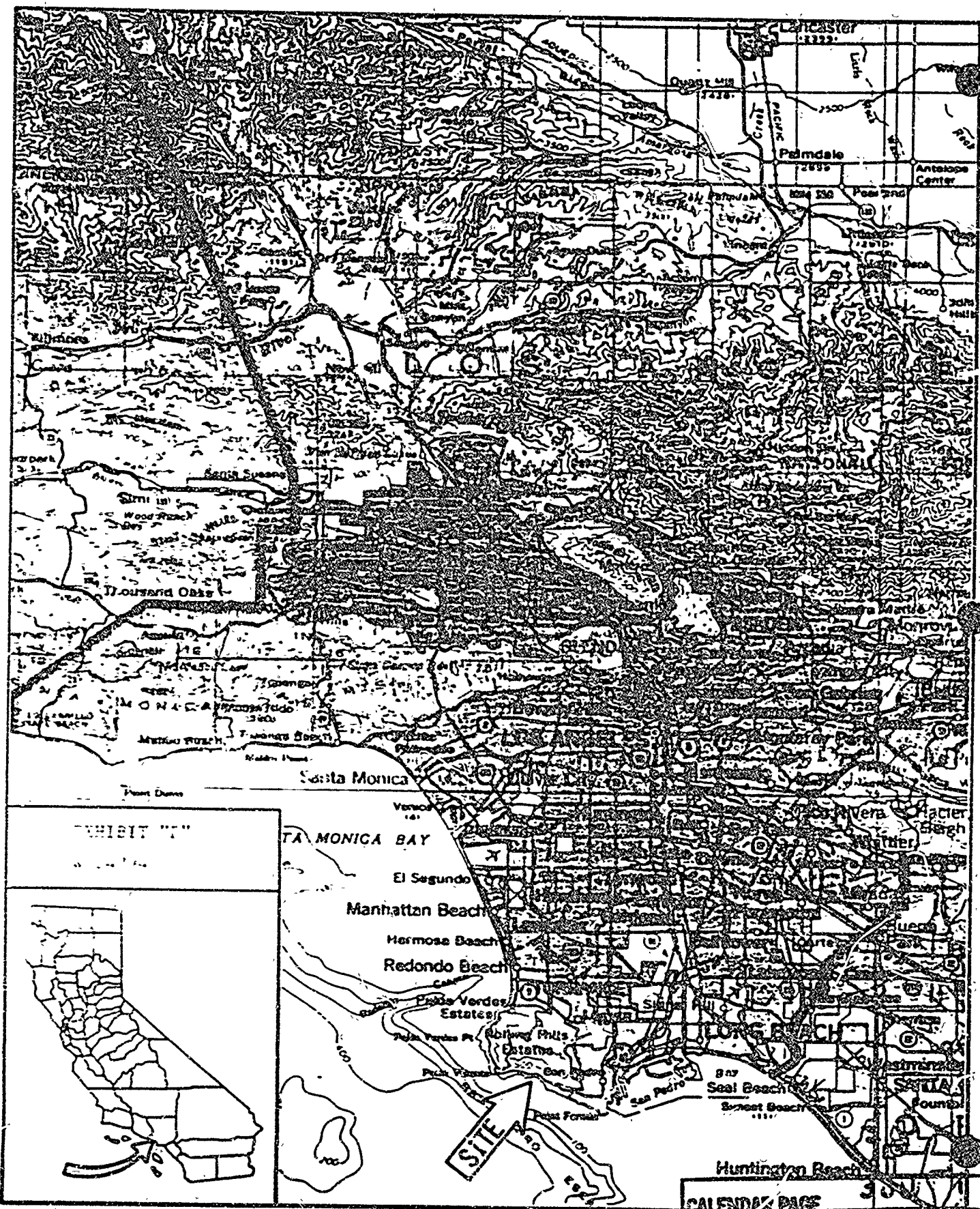


EXHIBIT "T"



HUNTINGTON BEACH  
 CALENDAR PAGE 3041  
 MINUTE PAGE 2703

Mail to: State Clearinghouse, 1600 North Street, Rm. 121, Sacramento, CA 95814 - 916/445-0815

See Notice Below

SDN # \_\_\_\_\_

NOTICE OF COMPLETION AND ENVIRONMENTAL DOCUMENT FORM

1. Project Title: Environmental Assessment No. 605, Coastal Permit No. 91, and Grading Permit No. 1432
2. Lead Agency: City of Rancho Palos Verdes, E.S.
3. Contact Person: Laurie B. Jester
3a. Street Address: 30940 Hawthorne Boulevard
3b. City: R.P.V., CA 90274
3c. County: Los Angeles
3d. Zip: 90274
3e. Phone: (213) 377-6008

PROJECT LOCATION 4. County: Los Angeles 4a. City/Community: Rancho Palos Verdes

4b. (optional) Assessor's Parcel No. 7572-019-902 4c. Section N/A 4d. Top. N/A 4e. Range N/A
Palos Verdes Dr. South For Rural.

5a. Cross Streets: and Peppertree 5b. Nearest Community: N/A

6. Within 2 miles of: 6a. State Hwy. No. No 6b. Airports No 6c. Waterways Yes

7. DOCUMENT TYPE

- CEQA
01 NEP
02 Early Cons
03 X Reg Dec
04 Draft EIR
05 Supplement/
Subsequent EIR
(If so, enter SDN #)

8. LOCAL ACTION TYPE

- 01 General Plan Update
02 New Element
03 General Plan Amendment
04 Master Plan
05 Amendment
06 Specific Plan
07 Redevelopment
08 Rezoning
09 Land Division
(Subdivision, Parcel Map,
Tract Map, etc.)
10 Use Permit
11 Conical Ag Preserve
12 X Other Grading and
Coastal Permits

10. DEVELOPMENT TYPE

- 01 Residential: Units Acres
02 Office: Sq. Ft. Acres Employees
03 Shopping/
Commercial: Sq. Ft. Acres Employees
04 Industrial: Sq. Ft. Acres Employees
05 Sewer: MGD
06 Water: MGD
07 Transportation: Type
08 Mineral Extraction: Mineral
09 Power Generation: Usage Type:
10 X Other: Gabions to prevent
Seacliff erosion

9. TOTAL ACRES: 45 Acres

- DEPA
06 Notice of Intent
07 X Envir. Assessment/
FORSI
08 Draft EIS

- OTHER
09 Information Only
10 Final Document
11
Other

11. PROJECT ISSUES DISCUSSED IN DOCUMENT

- 01 Aesthetic/Visual
02 Agricultural Land
03 X Air Quality
04 Archaeological/Historical
05 X Coastal Zone
06 Fire Hazard
07 Flooding/Inundation
08 X Geologic/Seismic
09 Jobs/Housing Balance
10 Minerals
11 X Noise
12 X Public Services
13 Schools
14 Septic Systems
15 Sewer Capacity
16 X Soil Erosion
17 Solid Waste
18 Toxic/Hazardous
19 Traffic/Circulation
20 X Vegetation
21 X Water Quality
22 Water Supply
23 Wetland/
Riparian
24 X Wildlife
25 Growth Inducing
26 Incompatible Landuse
27 Cumulative Effects
28 Other

12. FUNDING (approx.) Federal \$ State \$ Total \$ 310,000 County \$60,000 Existing 80% \$250,000 Proposed 16%

13. PRESENT LAND USE AND ZONING: Open space with two single family residences approximatel 1600 feet from the project area. Zoning - Open Space Hazard.

14. PROJECT DESCRIPTION: The placement of 1600 feet of gabions, along the toe of Portuguese Bend Landslide at the shoreline to temporarily protect and prevent

15. SIGNATURE OF LEAD AGENCY REPRESENTATIVE: [Signature] Date 8-1-90

NOTE: Clearinghouse will assign identification numbers for all new projects. If a SDN Number already exists for a project (e.g., from a Notice of Preparation or previous Draft document) please fill it in.

FORM REVISED 4/85; REPLACES CATEX
\*(14. cont.) landslide material from eroding into the ocean. An additional 300 feet is existing. The gabions are a series of wall backfill with landslide cobble.

MINUTE PAGE 2764

To: Office of Planning and Research  
State of California  
1400 Tenth Street  
Sacramento, California 90815

NOTICE OF COMPLETION

Environmental Assessment No. 605, Coastal Permit No. 91 and Grading Permit  
Project Title No. 1433

4900 block of Palos Verdes Drive South - South of Palos Verdes Drive South -  
Project Location - Specific East of Peppertree  
Rancho Palos Verdes, CA Los Angeles  
Project Location - City Project Location - County

Description of Nature, Purpose, and Beneficiaries of Project

The placement of 1600 feet of gabions along the toe of Portuguese Bend  
Landslide at the shoreline to temporarily protect and prevent landslide  
material from eroding into the ocean. An additional 800 feet is existing.

The gabions are a series of wire baskets filled with landslide cobble.

City of Rancho Palos Verdes Department of Environmental Services  
Lead Agency Division

30940 Hawthorne Boulevard, Rancho Palos Verdes, CA 90274  
Address Where Copy of ~~EA~~ Negative Declaration is available

30 days from receipt by State Clearinghouse

Review Period

Laurie B. Jester (213) 377-6008 223  
Contact Person Area Code Phone Extension

Associate Planner - City of Rancho Palos Verdes

302  
CALENDAR PAGE  
MINUTE PAGE 2755

Jan



# RANCHO PALOS VERDES

Mayor MELVIN W. HUGHES  
Mayor Pro Tem JOHN C. ANSOAGART  
Councilman DOUGLAS M. KINCLOFFE  
Councilman ROBERT E. RYAN  
Councilwoman LUCY BACHARACH

August 1, 1990

Terry Lovelady  
State Clearinghouse  
1400 10th Street, Room 121  
Sacramento, CA 95814

Dear Ms. Lovelady:

Enclosed are all of the required documents for the Negative Declaration for Environmental Assessment No. 605 for the proposed project located in the 4900 block of Palos Verdes Drive South in Rancho Palos Verdes. Attached is the Notice of Completion and Transmittal Form as well as 10 copies of the Initial Study, Discussion of Potential Impacts, Preliminary Determination of Findings, regional map and local map. Also, attached is P.C. Resolution 90-27 which approved the Negative Declaration.

The proposed project is the placement of 1600 feet of Gabions along the toe of Portuguese Bend Landslide at the shoreline to temporarily protect and prevent landslide material from eroding into the ocean. An additional 800 feet is existing. The Gabions are a series of wire baskets filled with landslide cobble.

Final approval of the project will be issued by the State Lands Commission and the California Coastal Commission. For your information, the Coastal Commission Application No. for the 1600 foot gabion extension is S-90-636, and the State Lands Commission application file Reference No. is W24394. Both of these agencies as well as the Department of Fish and Game have already reviewed and commented on the Negative Declaration. Attached are copies of their comments for your information.

Your prompt review of these documents is appreciated. Please contact me at (213) 377-6008 if you have any questions.

Sincerely,

*Laurie B. Jester*  
Laurie B. Jester  
Associate Planner

LBJ:pg

cc: Jon Taylor

Enclosures

CALENDAR PAGE	305
MINUTE PAGE	2766

## INITIAL STUDY

ENVIRONMENTAL ASSESSMENT NO. 605

### PROJECT DESCRIPTION

The proposed project is the construction of gabions along the toe of the Portuguese Bend Landslide at the shoreline to temporarily protect and prevent landslide material from being eroded into the ocean. The gabions are a series of wire baskets filled with rocks. A filter fabric is placed between the existing soil and the gabions to prevent the soil from washing through the gabions. The baskets step up from the shore and are a total of 9 feet deep by 9 feet high. The area behind the gabions is proposed to be filled with landslide cobble with a soil cover placed on top. This will provide a 12 foot wide level area to access the gabions. The gabions would extend along the shore for approximately 1600 feet beginning at the east end of the existing gabions. This would provide shoreline protection in the Portuguese Bend Landslide east of Inspiration Point to the Portuguese Bend Club Beach. Placement of the existing 800 feet of gabions began September 1988 and was completed January 6, 1989.

### ENVIRONMENTAL SETTING

The site is at the toe of the landslide adjacent to the rocky beach in Portuguese Bend east of Inspiration Point and west of Klondike Canyon. This bluff area is very steep and broken up due to the massive landslide and wave erosion. Numerous fissures and steep drop offs are apparent. Very little vegetation exists in the area since it is unable to become established due to the constant land movement. Further north above the bluffs there are isolated areas of disturbed Coastal Sage Scrub and small areas of introduced grasslands. A variety of small animals which are associated with the Coastal Sage Scrub plant community may be found in the area to the north of the bluffs. Few animals habitate the area because of the extreme slopes, land movement and lack of vegetation.

There is much sediment in the water in the project area from the erosion of the sea bluff and kelp growth is very sparse. To the west of the project area, where the existing gabions are located, the water is much clearer, there is an extensive growth of kelp and vegetation is growing on the sea bluffs.

The proposed project is seaward of the historic mean high tide line. Due to massive landsliding, the toe of the landslide has moved approximately 200 to 650 feet seaward of its location in 1944. The "Artificial" mean high tide line which has been created due to the landslide and erosion is located seaward of the proposed gabions.

CALENDAR PAGE	304
MINUTE PAGE	2767

## ENVIRONMENTAL ISSUES

The issues to be discussed below have been determined to be of environmental concern. Other environmental issues (as described in the California Environmental Quality Act) have been examined and have been determined to be of no concern within the parameters of this project. Unless discussed in this Initial Study or the General Plan, the impacts resulting from this project (individual and/or collective) when added to past, current, or future projects, are not considered significant from a cumulative viewpoint.

### EARTH

The proposed project is located in an active landslide and movement of the soil is evident. Additional earth movement will be required and will disrupt the soil at the base of the sea bluff. The level access area landward of the gabions will require placement and compaction of fill over the existing soil. The area will be less subject to erosion which will change the topography and modify the physical features of the bluff, since they will not be as uneven and broken up but more natural. The project will decrease beach and bluff erosion and decrease siltation which will improve the water quality in the ocean. During construction and monitoring of the gabions, people will be exposed to the irregular sluffing of bluff material at the toe of the landslide.

### AIR

Construction equipment will emit pollutants above what is normally experienced in the area. This is a temporary situation which is expected with any type of construction activity and is not considered to be significant.

### WATER

The gabions will improve the water quality of the ocean in the immediate area since soil from the bluff will not be eroding as rapidly into the ocean. During construction of the gabions workers could be exposed to high waves. Since hazardous waves generally only occur during storms in the winter and the gabions are proposed to be constructed in the summer, this hazard is considered to be insignificant.

### PLANT LIFE

The gabions will help stabilize the bluff which will allow plant material to become established again. A reduction in siltation in the water will allow marine plant life to reestablish. Construction could disturb existing plants if activities were allowed to enter the area seaward of the "Artificial" mean high tide line.

### ANIMAL LIFE

The project will reduce siltation in the water so marine animal life will have the opportunity to reestablish in the project area. Construction could disturb existing marine animals if activities were allowed to enter the area seaward of the "Artificial" mean high tide line.

### NOISE

Construction of the gabions will cause a temporary increase in noise levels from the construction equipment. This increase is not considered to be a significant impact because it is only temporary.

### PUBLIC SERVICES

After the gabions are installed they will require monthly inspections. During heavy winter storms weekly inspections may be necessary. Repairs to damaged gabions are required generally once a year. This maintenance is budgeted as part of the Redevelopment Agency budget and is not significant when compared to the maintenance and monitoring required when the bluff is eroding at the current rate.

### MITIGATION MEASURES

The soil at the base of the bluff is currently continually eroding and washing into the ocean due to wave action. The gabions will protect this soil and drastically slow the erosion. The fill for the level access area will create a further buffer zone and buttress which will help to stabilize the bluff. The eventual topographic changes will be beneficial in that the bluff will be restored to more natural contours. Although people will be exposed to the irregular sluffing of bluff material during the construction, the long term effects of the landslide are much more hazardous for the 29 homes which are affected by the Portuguese Bend Landslide. This project will help to stabilize the slide which will lessen the geologic hazard for everyone in the area.

In order to minimize disturbance to any existing marine plant and animal life in the area, construction equipment should not be allowed in the area seaward of the "Artificial" mean high tide line. Only rocks of terrestrial origination should be used in the gabions and for the access area fill behind the gabions. Upon completion of the project all equipment and materials should be removed from the shoreline, and no equipment or materials should be stored on the shoreline.

#### FINDINGS/DETERMINATION

Although the proposed project could have effects on the environment, they are insignificant and can be further reduced through mitigation. Mitigation measures will be incorporated into the project.

In view of the foregoing information and analysis, the Environmental Assessment Questionnaire, supplemental data supplied by the applicant, and other information sources, it has been determined that a Negative Declaration should be issued; subject to mitigation.

This Initial Study was prepared by Laurie B. Jester, Associate Planner, under the Director of Environmental Services on May 2, 1990.

Data was supplied by the applicant, the Environmental Assessment Questionnaire and supplemental data, and through the sources listed below:

- Rancho Palos Verdes General Plan 1975 as amended.
- Rancho Palos Verdes Development Code 1976 as amended.
- Rancho Palos Verdes Coastal Specific Plan 1978 as amended.
- Environmental Assessment No. 605.
- Memorandum to: Charles Abbott  
From: Perry L. Ehlig, City Geologist, December 30, 1989
- Memorandum to: Charles Abbott  
From: John S. Stephens, Jr., Ph.D., Vantuna Research Group  
February 9, 1990
- "The Issues and Problems of Defining Property Boundaries on Tidal Waters in California", Peter H.F. Graber, Attorney at Law, Warren C. Thompson, Coastal Consultant, Conference on Coastal Erosion, San Diego, 1985.

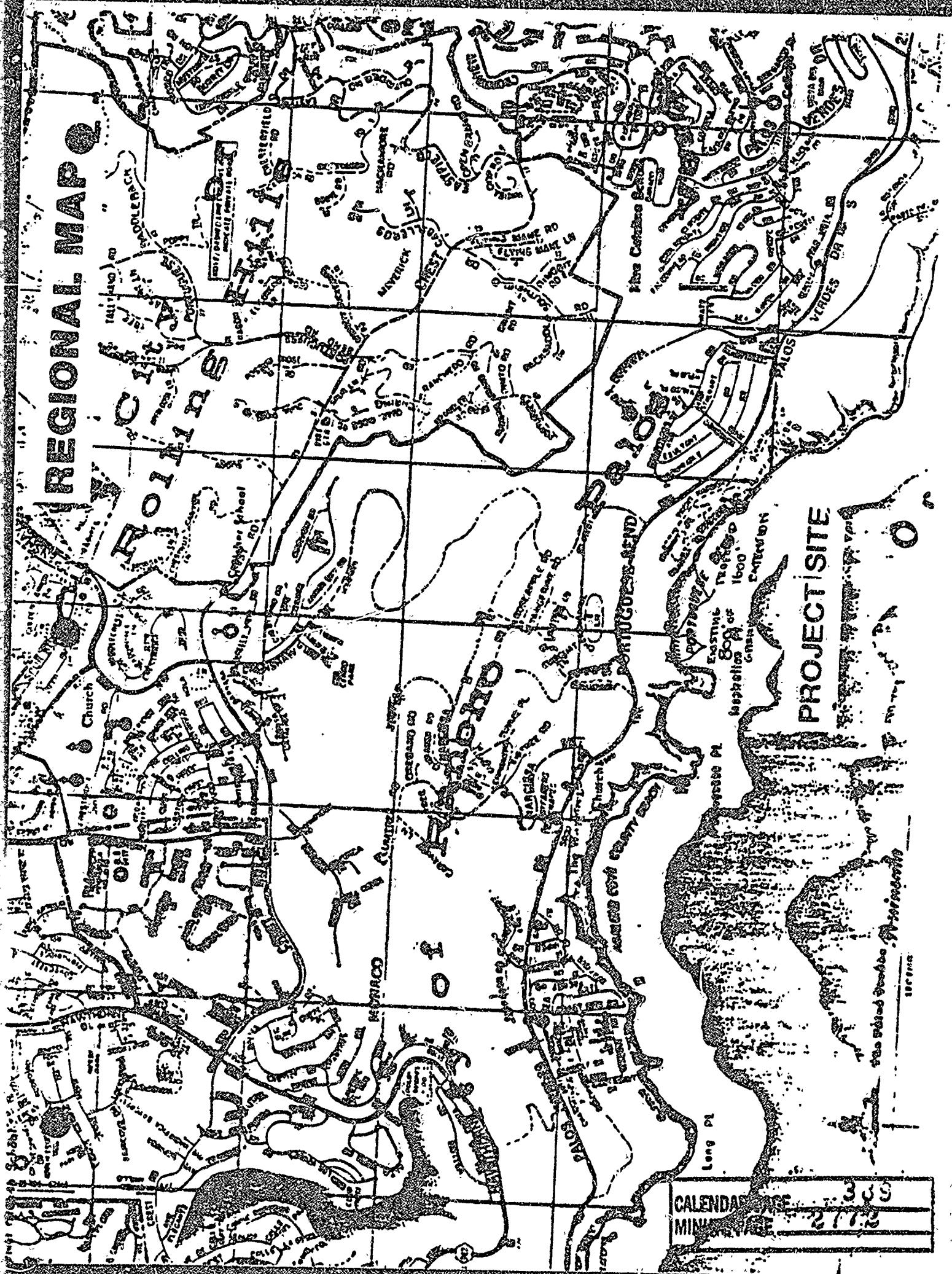


MITIGATION MEASURES

- 1) No equipment, or construction material shall be stored or placed in the area seaward of the "Artificial" mean high tide line.
- 2) All equipment and materials used in the project shall be removed from the shoreline after the project is completed.
- 3) Quarterly monitoring and reporting, by the Redevelopment Agency Staff, of the effectiveness and condition of the gabions shall be required for one year upon completion of this project.
- 4) Only rocks of terrestrial origination shall be used in the gabions.
- 5) No equipment is to enter the area seaward of the "Artificial" mean high tide line.

LBJ:pg

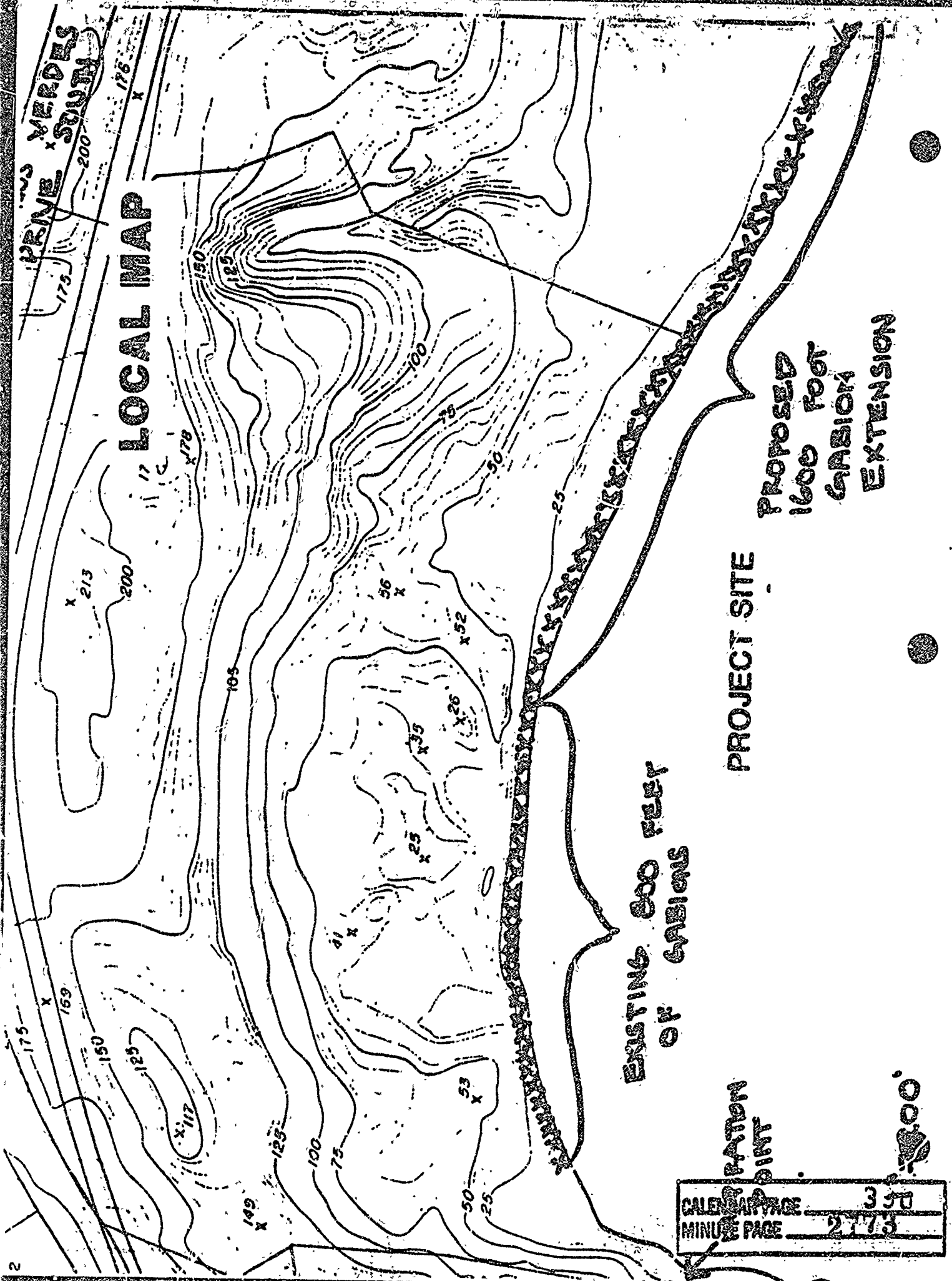
# REGIONAL MAP



CALENDAR	300
MIN	210

PEINE VERDES SOUTH

# LOCAL MAP



EXISTING 800 FEET OF GABIONS

PROJECT SITE

PROPOSED 1600 FOOT GABION EXTENSION

SCALE	1" = 100'
	1" = 200'
DATE	3/30
MINUTE PAGE	2703



# RANCHO PALOS VERDES

Mayor MELVIN W. HUGHES

Mayor Pro Tem JOHN C. McSAGART

Councilman DOUGLAS M. HENCHLIFFE

Councilman ROBERT E. RYAN

Councilwoman JACKI BACHARACH

## PUBLIC NOTICE

### PROPOSED

### NEGATIVE DECLARATION

The City of Rancho Palos Verdes hereby gives notice that pursuant to the authority and criteria contained in the California Environmental Quality Act ("CEQA") and the CEQA Guidelines of the City of Rancho Palos Verdes, the Director of Environmental Services has analyzed the request for Environmental Assessment No. 605, Grading No. 1433, and Coastal Permit No. 91 proposed to be located in the 4900 block of Palos Verdes Drive South, south of Palos Verdes Drive South, east of Inspiration Point, and west of Klondike Canyon.

The project is briefly described as:

The extension of the gabions at the Portuguese Bend landslide shoreline to temporarily protect and prevent landslide material from eroding into the ocean. The gabions are a series of wire baskets filled with rocks stacked on top of one another. They would extend approximately 1600 feet beginning at the east end of the existing gabions to the west side of Klondike Canyon. This would complete the temporary shoreline protection in the Portuguese Bend landslide from Inspiration Point to the Portuguese Bend Club.

After reviewing the Initial Study and any applicable mitigating measures for the project, the Director of Environmental Services has determined that this project will not have a significant effect on the environment. Accordingly, a NEGATIVE DECLARATION has been prepared.

Public comments will be received by the City prior to final approval of the NEGATIVE DECLARATION and action on the project, for a period of at least 21 days, through May 22, 1990.

A public hearing will be held to discuss the project, including the proposed NEGATIVE DECLARATION, on May 22, 1990 at 7:30 p.m. at the City Council Chambers, Hesse Park, 29301 Hawthorne Boulevard, Rancho Palos Verdes.

A copy of all relevant material, including the project specifications, Initial Study, and the NEGATIVE DECLARATION, is on file in the offices of the Environmental Services Department, 30940 Hawthorne Boulevard, Rancho Palos Verdes, CA 90274. The Initial Study will be available for public review on May 2, 1990.

Please contact Laurie B. Jester at (213) 377-6068 for information.

30940 HAWTHORNE BOULEVARD, RANCHO PALOS VERDES CA 90274-5335

CALENDAR PAGE	351
MINUTE PAGE	2774

Date: April 26, 1990

  
By: Robert Benard, Director  
Environmental Services

Please mail to: Los Angeles County Clerk  
County Courthouse  
111 North Hill Street  
Los Angeles, CA 90012

RB:LBJ:mk

CALENDAR PAGE	314
MINUTE PAGE	2115

FINAL

NEGATIVE DECLARATION

For: Environmental Assessment No. 605, Coastal Permit No. 91 and Grading No. 1433.

Application has been filed with the City of Rancho Palos Verdes for approval of the project known as the gabions to be located at the toe of the Portuguese Bend Landslide at the shoreline, and to be implemented by the City of Rancho Palos Verdes, Redevelopment Agency, 30940 Hawthorne Blvd., Rancho Palos Verdes, CA 90274.

The project is briefly described as:

The extension of the gabions at the Portuguese Bend landslide shoreline to temporarily protect and prevent landslide material from eroding into the ocean. The gabions are a series of wire baskets filled with rocks stacked on top of one another. They would extend approximately 1600 feet beginning at the east end of the existing gabions to the west side of Klondike Canyon. This would complete the temporary shoreline protection in the Portuguese Bend landslide from Inspiration Point to the Portuguese Bend Club.

Pursuant to the authority and criteria contained in the California Environmental Quality Act and the Environmental Impact Report Guidelines of the City of Rancho Palos Verdes, the Lead Agency has analyzed the project and determined that the project will not have a significant impact on the environment. Based on this finding, the Lead Agency prepared this NEGATIVE DECLARATION.

A copy of the Initial Study, documenting reasons to support the finding, is attached. Mitigation measures, if any, included in the project to avoid potentially significant effects are:  
See attached Initial Study

A period of ten (10) days from the date of final adoption of this NEGATIVE DECLARATION by the Lead Agency will be provided for appeal to the City Council of the final adoption of this NEGATIVE DECLARATION. Copies of the environmental documents and project specifications are on file in the offices of the Environmental Services Department, 30940 Hawthorne Boulevard, Rancho Palos Verdes, California.

Date: May 22, 1990

By: \_\_\_\_\_  
Robert Benard, Director of  
Environmental Services  
Secretary to the Commission

CALENDAR PAGE	353
MINUTE PAGE	2776



# RANCHO PALOS VERDES

## NOTICE OF DETERMINATION

**TO:** Office of Planning and Research  
1400 Tenth Street, Room 121  
Sacramento, CA 95814

**TO:** County Clerk  
County of Los Angeles  
County Court House  
111 North Hill Street  
Los Angeles, CA 90012

**FROM:** City of Rancho Palos Verdes  
30940 Hawthorne Boulevard  
Rancho Palos Verdes, CA 90274

**SUBJECT:** Filing of Notice of Determination in compliance with Section 21108 or 21152 of the Public Resources Code.

Coastal Permit No. 91, Grading Permit No. 1433 and Environmental Assessment No. 605

Project Title (Common name where possible)

N/A

State Clearinghouse Number (If submitted to State Clearinghouse)

Laurie B. Jester  
Contact Person

(213) 377-6006  
Telephone Number

4900 block of Palos Verdes Drive South, south of Palos Verdes Drive South, east of Inspiration Point, and west of Klondike Canyon, City of Rancho Palos Verdes, County of Los Angeles  
Project Location (include County)

The extension of the gabions at the Portuguese Bend landslide shoreline to temporarily protect and prevent landslide material from eroding into the ocean. The gabions are a series of wire baskets filled with rocks stacked on top of one another. They would extend approximately 1600 feet beginning at the east end of the existing gabions to the west side of Klondike Canyon.  
Project Description

This is to advise that the City of Rancho Palos Verdes has approved the above described project and has made the following determinations regarding the above described project:

1. The project will have a significant effect on the environment.  
It will not

**RECEIVED**  
JUN 22 1990

FILED  
JUN 20 1990

ENVIRONMENTAL SERVICES

30940 HAWTHORNE BOULEVARD / RANCHO PALOS VERDES CA 90274-5351

CALENDAR PAGE 354  
MINUTE PAGE 2777

Notice of Determination:  
June 7, 1990

Coastal Permit No. 91, 433, EA605

- A Negative Declaration was prepared for this project pursuant to the provisions of CEQA. A copy of the Negative Declaration may be examined at the Department of Environmental Services, City of Rancho Palos Verdes.
- An Environmental Impact Report was prepared for this project pursuant to the provisions of CEQA, and was reviewed and considered by the decision-making body prior to its decision on the project. The Environmental Impact Report is available to the public at \_\_\_\_\_.
3.  Mitigation measures  were \_\_\_\_\_ were not a condition of approval of the project.
4.  A Statement of Overriding Considerations \_\_\_\_\_ was \_\_\_\_\_ was not adopted for this project.
5.  Findings  were \_\_\_\_\_ were not made pursuant to the provisions of CEQA.

I hereby certify that the foregoing is true and correct.

\_\_\_\_\_  
Signature

\_\_\_\_\_  
Director of Environmental Services  
Title

\_\_\_\_\_  
June 7, 1990  
Date

This document is being filed in duplicate. Please acknowledge the filing date and return acknowledged copy in the enclosed, stamped, self-addressed envelope.

\_\_\_\_\_  
Date Received for Filing

CALENDAR PAGE 305  
MINUTE PAGE 278





# RANCHO PALOS VERDES

## NOTICE OF DETERMINATION

TO: Office of Planning and Research  
1400 Tenth Street, Room 121  
Sacramento, CA 95814

TO: County Clerk  
County of Los Angeles  
County Court House  
111 North Hill Street  
Los Angeles, CA 90012

FROM: City of Rancho Palos Verdes  
30940 Hawthorne Boulevard  
Rancho Palos Verdes, CA 90274

SUBJECT: Filing of Notice of Determination in compliance with Section 21108 or 21152 of the Public Resources Code.

Coastal Permit No. 01, Grading Permit No. 1433 and Environmental

Assessment No. 605

Project Title (Common name where possible)

N/A

State Clearinghouse Number (If submitted to State Clearinghouse)

Laurie B. Jester  
Contact Person

(213) 377-6008  
Telephone Number

4900 block of Palos Verdes Drive South, south of Palos Verdes Drive South, east of Inspiration Point, and west of Klondike Canyon, City of Rancho Palos Verdes, County of Los Angeles.  
Project Location (include County)

The extension of the gabions at the Portuguese Bend landslide shoreline to temporarily protect and prevent landslide material from eroding into the ocean. The gabions are a series of wire baskets filled with rocks stacked on top of one another. They would extend approximately 1600 feet beginning at the east end of the existing gabions to the west side of Klondike Canyon.  
Project Description

This is to advise that the City of Rancho Palos Verdes has approved the above described project and has made the following determinations regarding the above described project:

1. The project will have a significant effect on the environment.  
X will not

THIS NOTICE WAS POSTED  
JUN 22 1990 JUN 23 1990  
FROM \_\_\_\_\_ TO \_\_\_\_\_  
DEPUTY COUNTY CLERK

RECEIVED  
JUN 21 1990

- 2.  A Negative Declaration was prepared for this project pursuant to the provisions of CEQA. A copy of the Negative Declaration may be examined at the Department of Environmental Services, City of Rancho Palos Verdes.  
  
 An Environmental Impact Report was prepared for this project pursuant to the provisions of CEQA, and was reviewed and considered by the decision-making body prior to its decision on the project. The Environmental Impact Report is available to the public at \_\_\_\_\_
- 3.  Mitigation measures  were \_\_\_\_\_ were not a condition of approval of the project.
- 4.  A Statement of Overriding Considerations \_\_\_\_\_ was \_\_\_\_\_ was not adopted for this project.
- 5.  Findings  were \_\_\_\_\_ were not made pursuant to the provisions of CEQA.

I hereby certify that the foregoing is true and correct.

\_\_\_\_\_  
Signature  
  
\_\_\_\_\_  
Director of Environmental Services  
Title  
  
\_\_\_\_\_  
June 7, 1990  
Date

This document is being filed in duplicate. Please acknowledge the filing date and return acknowledged copy in the enclosed, stamped, self-addressed envelope.

\_\_\_\_\_  
Date Received for Filing

CALENDAR PAGE 337  
MINUTE PAGE 2/80