

MINUTE ITEM

This Calendar Item No. C06  
was approved as Minute Item  
No. 6 by the State Lands  
Commission by a vote of 3  
to 0 at its 9/27/89  
meeting.

CALENDAR ITEM

A 20

C06

09/27/89

S 8

PRC 4682

Maricle

ASSIGNMENT OF A NON-COMMERCIAL LEASE

ASSIGNOR Carruf California Corporation  
500 Airport Boulevard, Suite 130  
Burlingame, California 94010

ASSIGNEE New Town Hotel, Inc.  
c/o U.S. Land International Holdings, Inc.  
500 Sutter Street, Suite 418  
San Francisco, California 94102

AREA, TYPE LAND AND LOCATION:  
A 2.547-acre parcel of filled sovereign land  
located at Burlingame, San Mateo County.

LAND USE: Public access and recreational use strip  
(Fisherman Park).

TERMS OF ORIGINAL LEASE:  
Initial period: 66 years beginning July 1,  
1972.

Public liability insurance: \$300,000/\$600,000  
per occurrence for bodily  
injury and \$100,000 for  
property damage.

CONSIDERATION: The public benefit arising from lessee's  
improvement of the premises, for public  
purposes, and payment of bonded indebtedness.

CALENDAR ITEM NO. C 06 (CONT'D)

MINUTE ITEM  
The Calendar Item No. C06  
was approved as Minute Item  
No. 3 of the State Lands  
Commission on July 6, 1972  
at the Commission's meeting  
held on July 6, 1972.

**BASIS FOR CONSIDERATION:**

Pursuant to 2 Cal. Code Regs. 2003.

**PREREQUISITE CONDITIONS, FEES AND EXPENSES:**

Processing costs have been received.

**STATUTORY AND OTHER REFERENCES:**

- A. P.R.C.: Div. 6, Parts 1 and 2; Div. 13.
- B. Cal. Code Regs.: Title 2, Div. 3;  
Title 14, Div. 6.

AB 884:

N/A.

**OTHER PERTINENT INFORMATION:**

1. Pursuant to the Commission's delegation of authority and the State CEQA Guidelines (14 Cal. Code Regs. 15061), the staff has determined that this activity is exempt from the requirements of the CEQA because the activity is not a "project" as defined by CEQA and the State CEQA Guidelines.

Authority: P.R.C. 21065 and 14 Cal. Code Regs. 15378.

2. This activity involves lands identified as possessing significant environmental values pursuant to P.R.C. 6370, et seq. but will not affect those significant lands.
3. Lease No. 4682 was originally issued to Anza Pacific Corporation under the provisions of BLA No. 131, as authorized by the Commission on July 6, 1972, Minute Item No. 26. Subsequent assignments occurred in the following sequence:

<u>Min. Item</u>	<u>Date</u>	<u>Assignee</u>
47	03/25/79	Anza Shareholder's Liquidating Trust
11	11/29/82	Carruf Corporation No. 5 N.U.
C8	11/20/86	Carruf California Corporation

CALENDAR ITEM NO. C 06 (CONT'D)

4. The proposed Assignee, New Town Hotel, Inc., is a California corporation and is in good legal standing, and was certified as such by the Secretary of State on July 31, 1989. The assignment of the lease would be effective as of August 10, 1989.
5. The subject property was confirmed into State ownership in 1972, subject to a prior easement granted to the County of San Mateo, as disclosed by a document recorded on August 22, 1963, Book 4532, Page 468. The County has promoted fishing activities for several years at this site, and such is consistent with the basic purposes of lease PRC 4682. The property is, in fact, known as Fisherman's Park, and the proposed Assignee will work with the San Mateo County Department of Parks and Recreation to improve the parcel with trash and refuse containers, restroom facilities, and a fish-preparation sink and counter; policing and and maintenance of the site shall be the perpetual duty of the Assignee.
6. Staff has no objections to the development and maintenance of the site as a public fishing site; the County of San Mateo, as Lead Agency, will attend to appropriate environmental documentation, as may be required.

APPROVALS OBTAINED:

None.

FURTHER APPROVALS REQUIRED:

None.

EXHIBITS:

- A. Location Map.
- B. Parcel Map.

IT IS RECOMMENDED THAT THE COMMISSION:

1. FIND THAT THE ACTIVITY IS EXEMPT FROM THE REQUIREMENTS OF THE CEQA PURSUANT TO 14 CAL. CODE REGS. 15061 BECAUSE THE ACTIVITY IS NOT A PROJECT AS DEFINED BY P.R.C. 21065 AND 14 CAL. CODE REGS. 15378.

CALENDAR ITEM NO. C.076 (CONT'D)

2. AUTHORIZE APPROVAL OF THE ASSIGNMENT OF LEASE PRC 4682, FROM CARRUF CALIFORNIA CORPORATION, ASSIGNOR, TO NEW TOWN HOTEL, INC., ASSIGNEE, EFFECTIVE AUGUST 10, 1989.

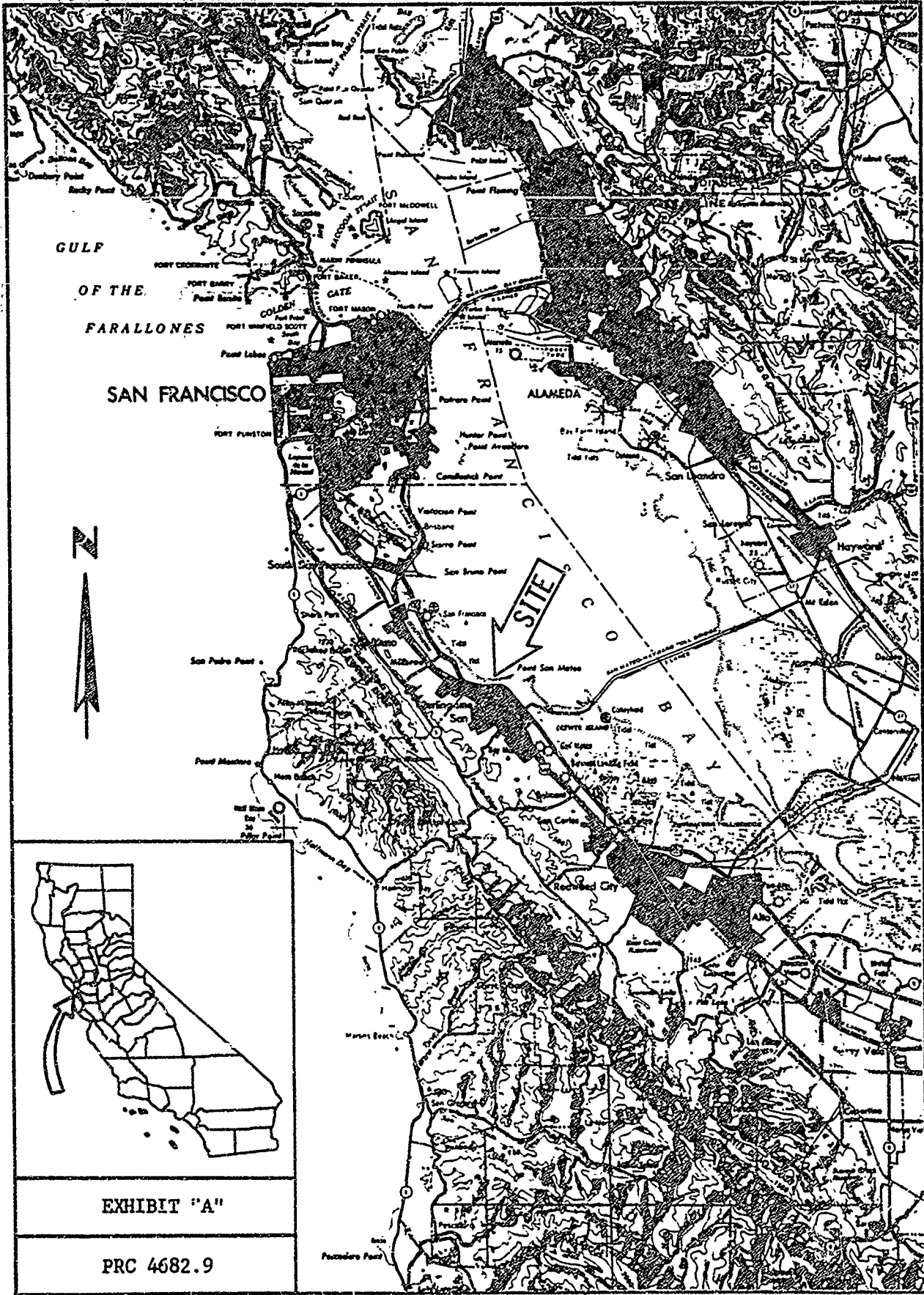
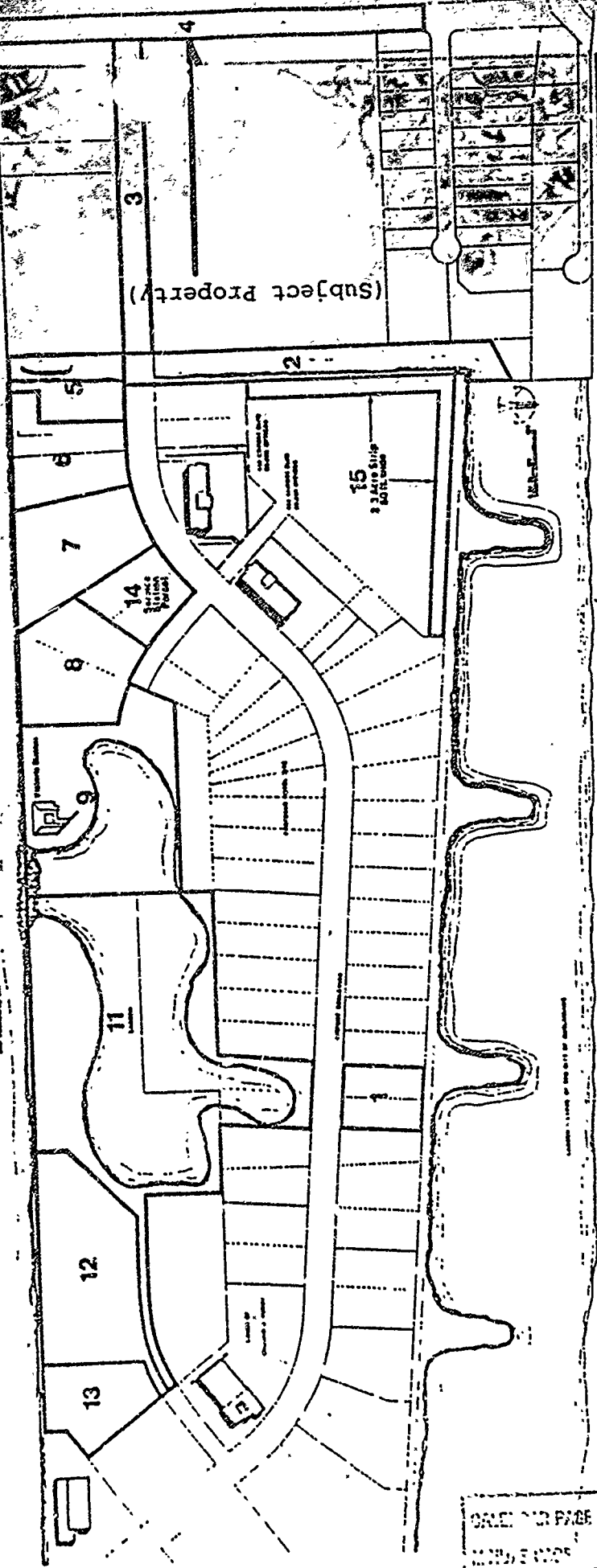


EXHIBIT "A"

PRC 4682.9

ANZA PACIFIC CORP.

Block	Area	Acres	Value
1	...	...	...
2	...	...	...
3	...	...	...
4	...	...	...
5	...	...	...
6	...	...	...
7	...	...	...
8	...	...	...
9	...	...	...
10	...	...	...
11	...	...	...
12	...	...	...
13	...	...	...
14	...	...	...
15	...	...	...
16	...	...	...
17	...	...	...
18	...	...	...
19	...	...	...
20	...	...	...
21	...	...	...
22	...	...	...
23	...	...	...
24	...	...	...
25	...	...	...
26	...	...	...
27	...	...	...
28	...	...	...
29	...	...	...
30	...	...	...
31	...	...	...
32	...	...	...
33	...	...	...
34	...	...	...
35	...	...	...
36	...	...	...
37	...	...	...
38	...	...	...
39	...	...	...
40	...	...	...
41	...	...	...
42	...	...	...
43	...	...	...
44	...	...	...
45	...	...	...
46	...	...	...
47	...	...	...
48	...	...	...
49	...	...	...
50	...	...	...
51	...	...	...
52	...	...	...
53	...	...	...
54	...	...	...
55	...	...	...
56	...	...	...
57	...	...	...
58	...	...	...
59	...	...	...
60	...	...	...
61	...	...	...
62	...	...	...
63	...	...	...
64	...	...	...
65	...	...	...
66	...	...	...
67	...	...	...
68	...	...	...
69	...	...	...
70	...	...	...
71	...	...	...
72	...	...	...
73	...	...	...
74	...	...	...
75	...	...	...
76	...	...	...
77	...	...	...
78	...	...	...
79	...	...	...
80	...	...	...
81	...	...	...
82	...	...	...
83	...	...	...
84	...	...	...
85	...	...	...
86	...	...	...
87	...	...	...
88	...	...	...
89	...	...	...
90	...	...	...
91	...	...	...
92	...	...	...
93	...	...	...
94	...	...	...
95	...	...	...
96	...	...	...
97	...	...	...
98	...	...	...
99	...	...	...
100	...	...	...
Total			



(Subject Property)

PRC 4682.9

EXHIBIT "B"

DATE: 10/1/88  
 37  
 3250