

MINUTE ITEM
This Calendar Item No. C24
was approved as Minute Item
No. 24 by the State Lands
Commission by a vote of 3
to 0 at its 12/13/88
meeting.

CALENDAR ITEM

C 24

A #16 - 8 & 9, #17 - 9

12/13/88
PRC 6205
Bancroft

S #16 - 2, #17 - 2

APPROVAL OF ADDENDUMS NO. 16 AND 17
TO PACIFIC GAS AND ELECTRIC COMPANY
MASTER LEASE PRC 6205

APPLICANT: Pacific Gas & Electric Company
Attn: Thomas de Age
3965 Occidental Road
Santa Rosa, California 95401

AREA, TYPE LAND AND LOCATION:
Addendum No. 16: A .021-acre parcel of tide
and submerged land, Sonoma Creek, Sonoma County.
Addendum No. 17: A .062-acre parcel of tide
and submerged land, Petaluma River, Sonoma
County.

LAND USE: Overhead 12 KV electric pole line crossings.

BACKGROUND:

On August 26, 1982, Minute Item No. 19, the State Lands
Commission approved a master lease to Pacific Gas and Electric
Company (PG&E) for various energy distribution facilities
located throughout the State. The master lease, as approved,
listed 82 separate leases for inclusion into the original master
lease. The master lease contemplates the addition, and
occasional deletion, of crossings according to the needs of the
day. The terms of the master lease are set out below.

CALENDAR ITEM NO. C 24 (CONT'D)

TERMS OF MASTER LEASE:

Initial period: 30 years beginning
September 1, 1982.

Renewal options: One successive period of
15 years.

Public liability insurance: Combined single
limit coverage of \$2,000,000
or alternative acceptable to
the State Lands Commission.

Consideration: \$15,534 per annum; five-year
rent review.

CONSIDERATION: Continuation of present rental.

BASIS FOR CONSIDERATION:

Pursuant to 2 Cal. Code of Regs. 2003.

STATUTORY AND OTHER REFERENCES:

A. P.R.C.: Div. 6, Parts 1 and 2; Div. 13.

B. Cal. Code of Regs: Title 2, Div. 3;
Title 14, Div. 6.

AB 884:

Addendum No. 16 - 04/06/89,
Addendum No. 17 - 04/28/89.

CURRENT SITUATION:

Addendum No. 16

PG&E proposes to install a 12,000 volt
overhead electric distribution line
crossing Sonoma Creek consisting of three
(3) 4ACSR conductors.

Addendum No. 17

PG&E proposes to install a 12,000 volt
overhead electric distribution line
crossing the Petaluma River consisting
of three (3) 4ACSR conductors.

CALENDAR ITEM NO. C 24 (CONT'D)

OTHER PERTINENT INFORMATION:

1. Pursuant to the Commission's delegation of authority and the State CEQA Guidelines (14 Cal. Code of Regs. 15061), the staff has determined that this activity is exempt from the requirements of the CEQA as a categorically exempt project. The project is exempt under Class 3, New Construction of a Small Structure, 14 Cal. Code of Regs. 15303.

Authority: P.R.C. 21084 and 14 Cal. Code of Regs. 15300.

2. These activities involve lands identified as possessing significant environmental values pursuant to P.R.C. 6370 et seq., but will not affect those significant lands.
3. Local agency approval has not been obtained since these projects are exempt from such approval by provisions of the County of Sonoma and City of Petaluma zoning ordinances.

APPROVALS OBTAINED:

United States Army Corps of Engineers.

EXHIBITS:

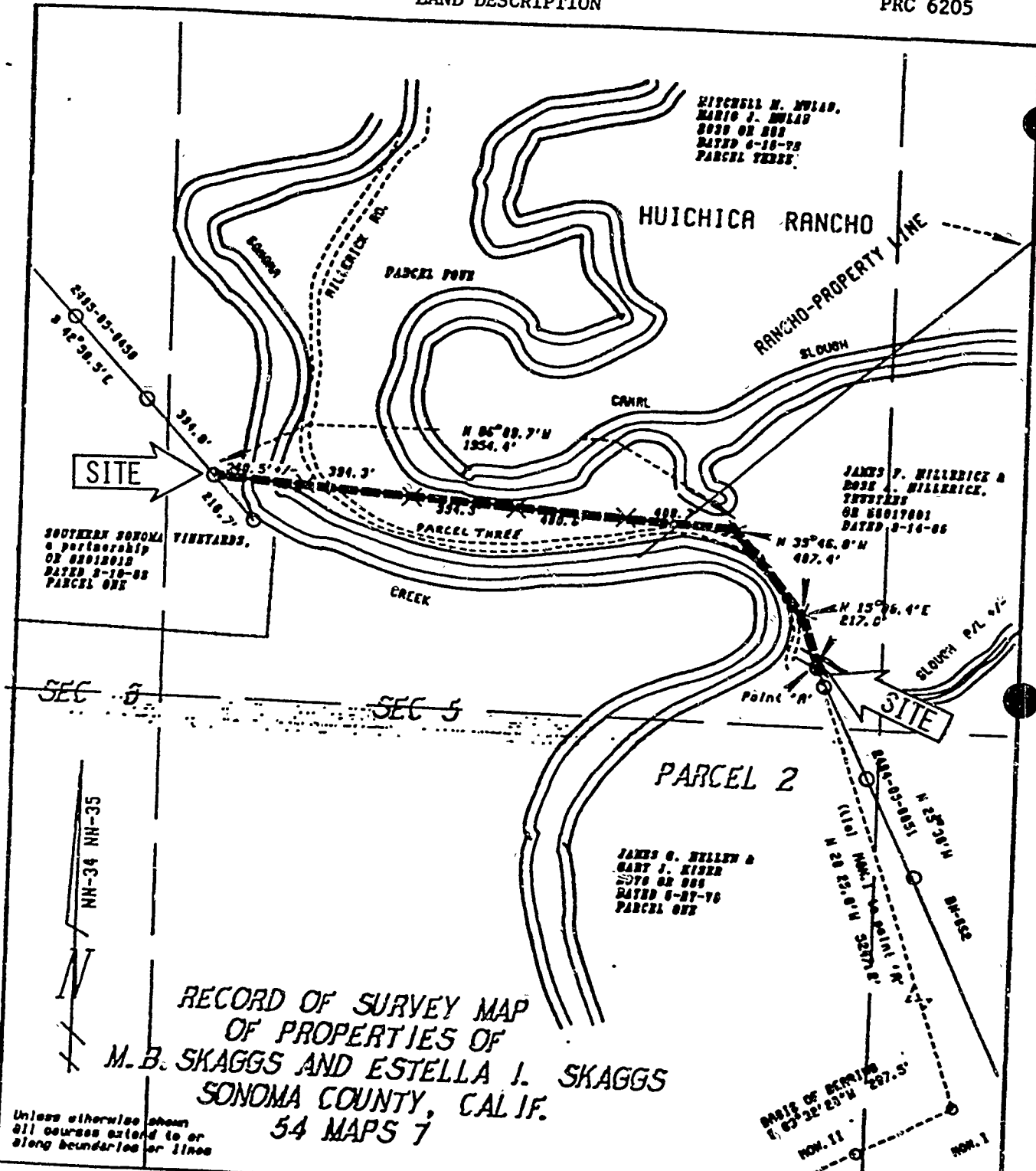
A-16, A-17: Land Descriptions.
B-16, B-17: Location Maps.

IT IS RECOMMENDED THAT THE COMMISSION:

1. FIND THAT THE ACTIVITIES ARE EXEMPT FROM THE REQUIREMENTS OF THE CEQA PURSUANT TO 14 CAL. CODE OF REGS. 15061 AS CATEGORICALLY EXEMPT PROJECTS, CLASS 3, NEW CONSTRUCTION OF A SMALL STRUCTURE, 14 CAL. CODE OF REGS. 15303.
2. FIND THAT THESE ACTIVITIES WILL INVOLVE LANDS IDENTIFIED AS POSSESSING SIGNIFICANT ENVIRONMENTAL VALUES PURSUANT TO P.R.C. 6370, ET SEQ., BUT THAT SUCH ACTIVITIES WILL HAVE NO DIRECT OR INDIRECT EFFECT ON SUCH LANDS.
3. AUTHORIZE APPROVAL AND ISSUANCE TO PACIFIC GAS AND ELECTRIC COMPANY OF ADDENDUMS NO. 16 AND 17 TO MASTER LEASE PRC 6205 PROVIDING FOR THE PLACEMENT AND INSTALLATION OF 12 KV OVERHEAD ELECTRIC LINE CROSSINGS SHOWN ON EXHIBITS "A-16" AND "A-17", ATTACHED, AND BY REFERENCE MADE A PART HEREOF.

EXHIBIT "A-16"
LAND DESCRIPTION

PRC 6205



RECORD OF SURVEY MAP
OF PROPERTIES OF
M.B. SKAGGS AND ESTELLA I. SKAGGS
SONOMA COUNTY, CALIF.
54 MAPS 7

Unless otherwise shown
all courses extend to or
along boundaries or lines

| | | | | | | | | | |
|--------------------------|--|--------------------------------------|--|---------------------|------|--------------------------|-------|------------------------|------------------|
| FACILITY PG&E Tie Line | | CITY 4 1/2 mi. SW/D Sonoma | | SEC. 5 | T 4N | R 5W | MDB&M | DATE 8-30-88 | SCALE: 1" = 522' |
| RANCHO Hulchica | | COUNTY OF Sonoma (128 - 47849) | | | | | | | |
| D&C | | SHEET No. | | F.B.: A.C. | | DR. BY: dk | | CH. BY: | |
| 25E94105 S 1/2 of NN 1/4 | | PG&E | | Santa Rosa DIVISION | | NO 318477H AUTHORIZATION | | SR-775 DRAWING NO. CMG | |
| REFERENCES | | PREPARED SEPTEMBER 15, 1988 BY BIU 1 | | CALENDAR PAGE | | 110 | | 3248 | |

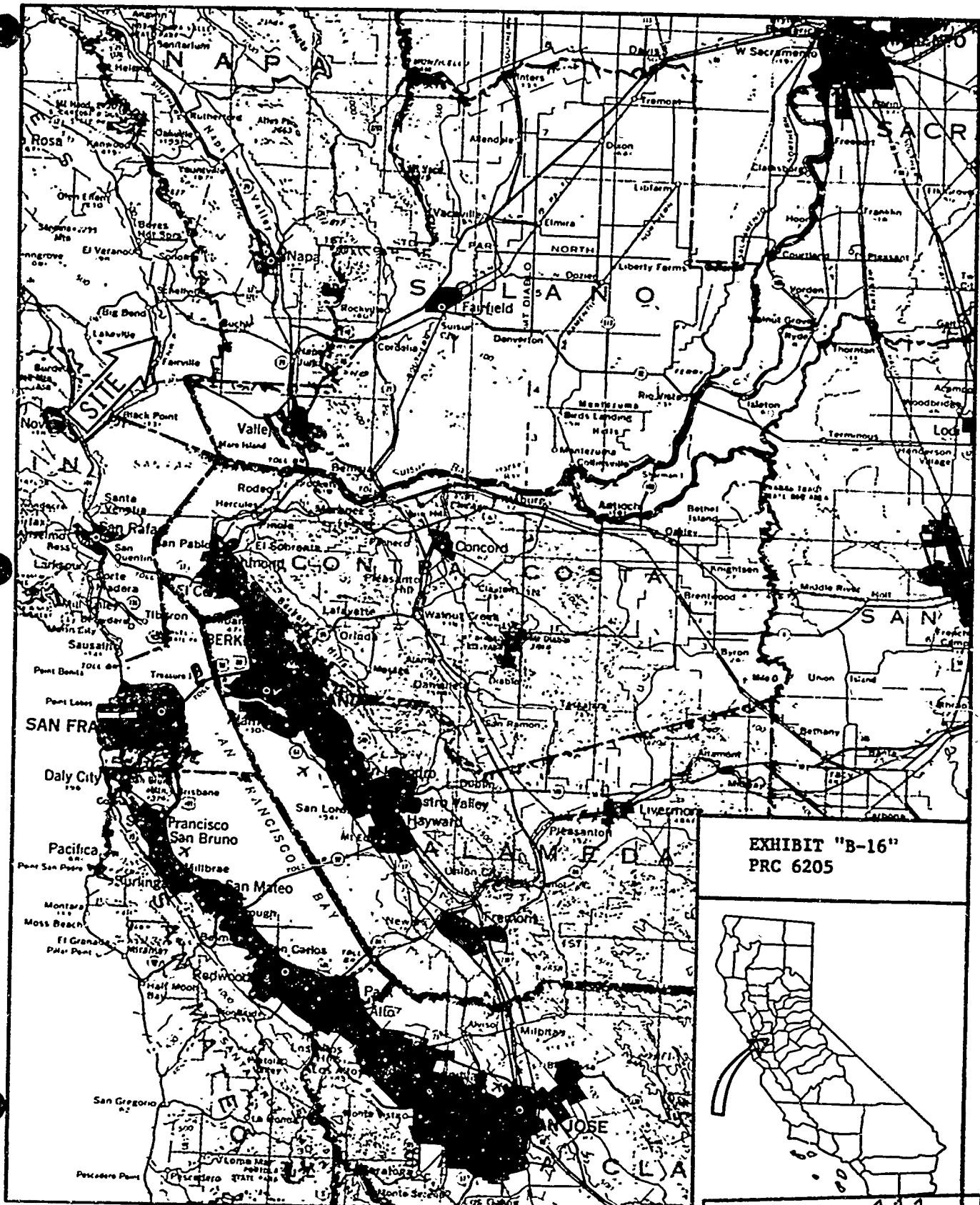


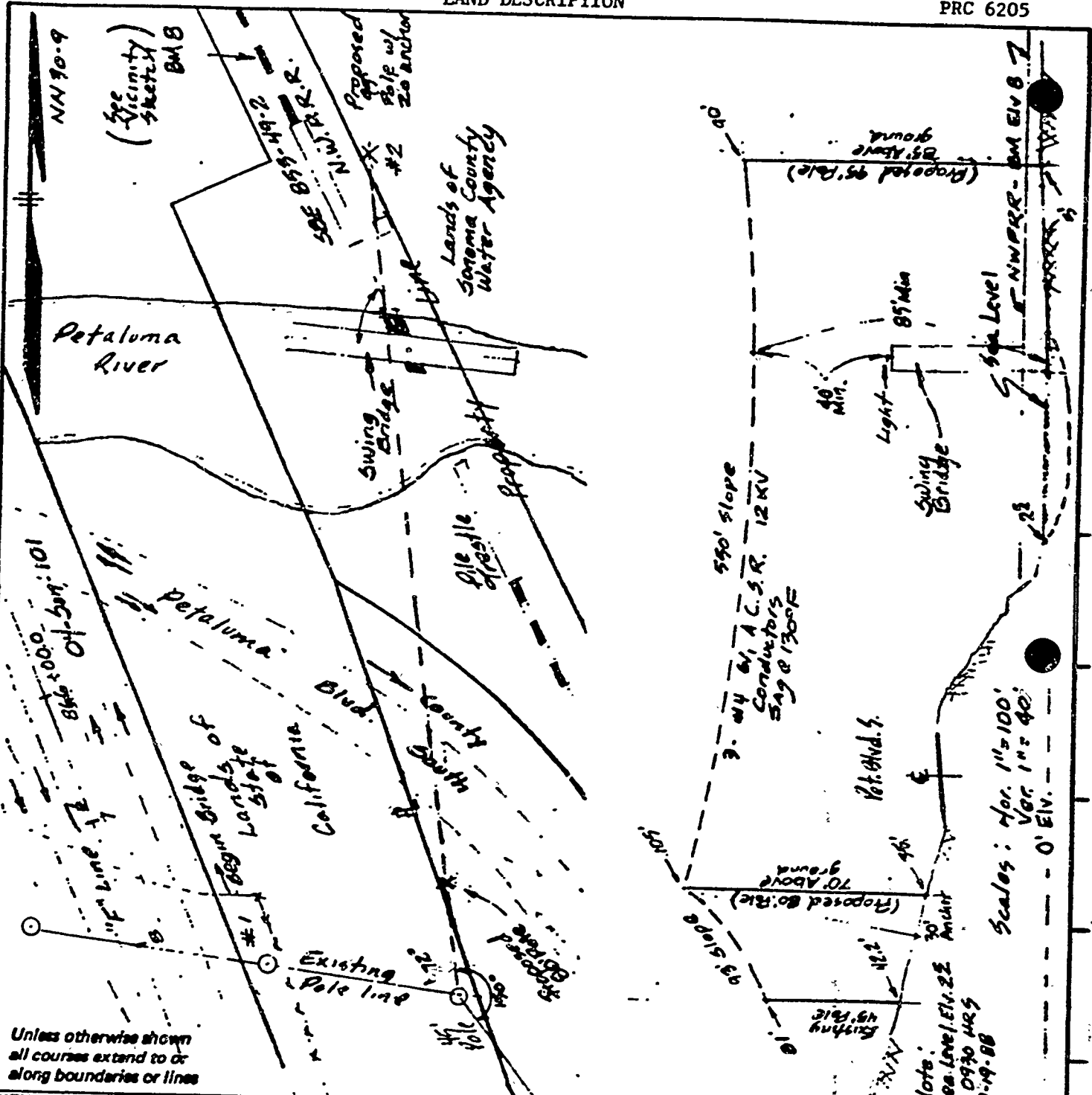
EXHIBIT "B-16"
 PRC 6205



| | |
|---------------|------|
| CALENDAR PAGE | 111 |
| MINUTE PAGE | 3249 |

EXHIBIT "A-17"
LAND DESCRIPTION

PRC 6205



Unless otherwise shown
all courses extend to or
along boundaries or lines

CITY, RANCHO, SUBDIVISION, ETC.

Overhead Wire Crossing - Petaluma River

| | | | |
|------------------------|--------------------------------|--------------------------------|----------------|
| SCALE 1" = 100' | | DATE 9-28-88 | |
| SECTION 34 | TOWNSHIP 5N | RANGE TW | MERIDIAN MD |
| COUNTY OF SONOMA | | | |
| CMS | DATE | DESCRIPTION | AUTH. BY CH. |
| 1 | 11-09-88 | Change route & increase height | PGE |
| REFERENCES | SW 1/4 of SE 1/4 2 1/2 E 86542 | | PGWE |
| DIVISION Santa Rosa | | DRBY: 10 | CH. BY: |
| DRAWING NO. 112 | | 3250 | |

REVISED DECEMBER 8, 1988 BY BIU 1

MINUTE PAGE

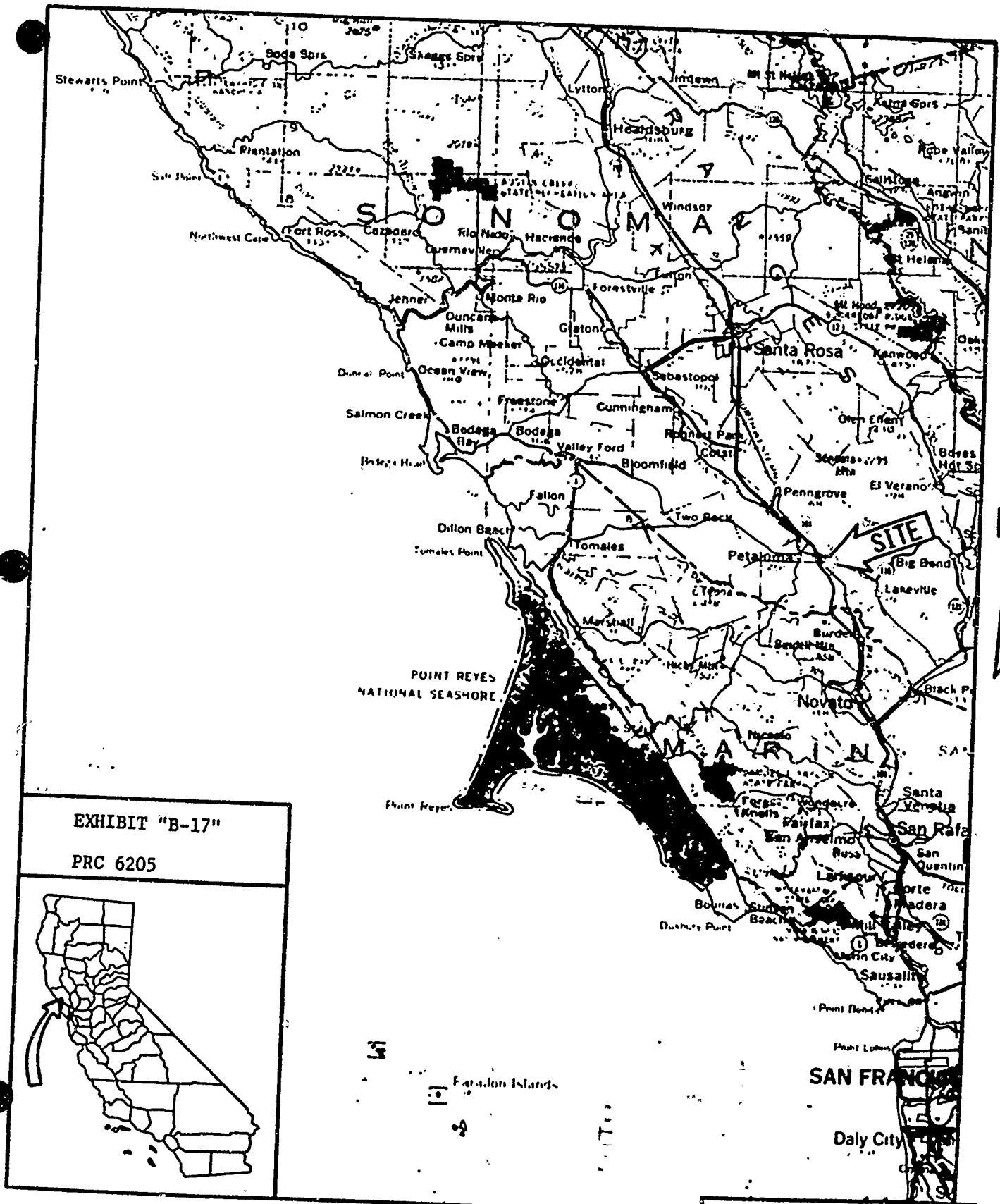


EXHIBIT "B-17"
 PRC 6205

