

MINUTE ITEM

7/12/84 28
28
0 7/12/84
11/12/84

CALENDAR ITEM

A 7
S 13

28 1

07/12/84
W 503.1349
IND 3134
Fossum
Williams

AUTHORIZATION TO FILE DISCLAIMER IN UNITED STATES
OF AMERICA V. 40.4 ACRES OF LAND, MORE OR
LESS, ETC., ET AL., MONO COUNTY, UNITED STATES
DISTRICT COURT, EASTERN DISTRICT OF
CALIFORNIA, NO. CIVS 83-1241-RAR

The State Lands Commission is a party to a United States
Condemnation Action brought by the United States Attorney
entitled United States of America v. 40.4 acres of land, more or
less, etc., et al., Mono County, for military and naval purposes
involving lands to be used in connection with the Marine Corps
Mountain Warfare Training Center, Bridgeport, California.

Upon examination of the Commission's records pertinent to the
area, it has been determined that the area of the taking
involves lands in the NW 1/4 of the NW 1/4 of S36, T9N R22E,
MDM, which was sold by the State as school lands on May 18, 1910
and patented April 28, 1943, no minerals reserved.

AB 884: N/A.

OTHER PERTINENT INFORMATION:

1. Pursuant to the Commission's delegation of
authority and the State CEQA Guidelines (14
C. l. Adm. Code 15061), the staff has
determined that this activity is exempt from
the requirements of the CEQA because the
activity is not a "project" as defined by
CEQA and the State CEQA Guidelines.
Authority: P.R.C. 21065 and 14 Cal. Adm.
Code 15378.

CALENDAR PAGE 143
MINUTE PAGE 1653

- EXHIBITS:
- A. Site Map.
 - B. Description.

IT IS RECOMMENDED THAT THE COMMISSION:

1. FIND THAT THE ACTIVITY IS EXEMPT FROM THE REQUIREMENTS OF THE CEQA PURSUANT TO 14 CAL. ADM. CODE 15061 BECAUSE THE ACTIVITY IS NOT A PROJECT AS DEFINED BY P.R.C. 21065 AND 14 CAL. ADM. CODE 15378.
2. AUTHORIZE THE ATTORNEY GENERAL TO FILE A DISCLAIMER ON BEHALF OF THE STATE LANDS COMMISSION IN THE CASE OF UNITED STATES OF AMERICA, 40.4 ACRES OF LAND, MORE OR LESS, IN THE COUNTY OF MONO, STATE OF CALIFORNIA, ET AL., UNITED STATES DISTRICT COURT, EASTERN DISTRICT OF CALIFORNIA, NO. CIV 83-1241-RAR.

CALENDAR PAGE	148
MINUTE PAGE	1654

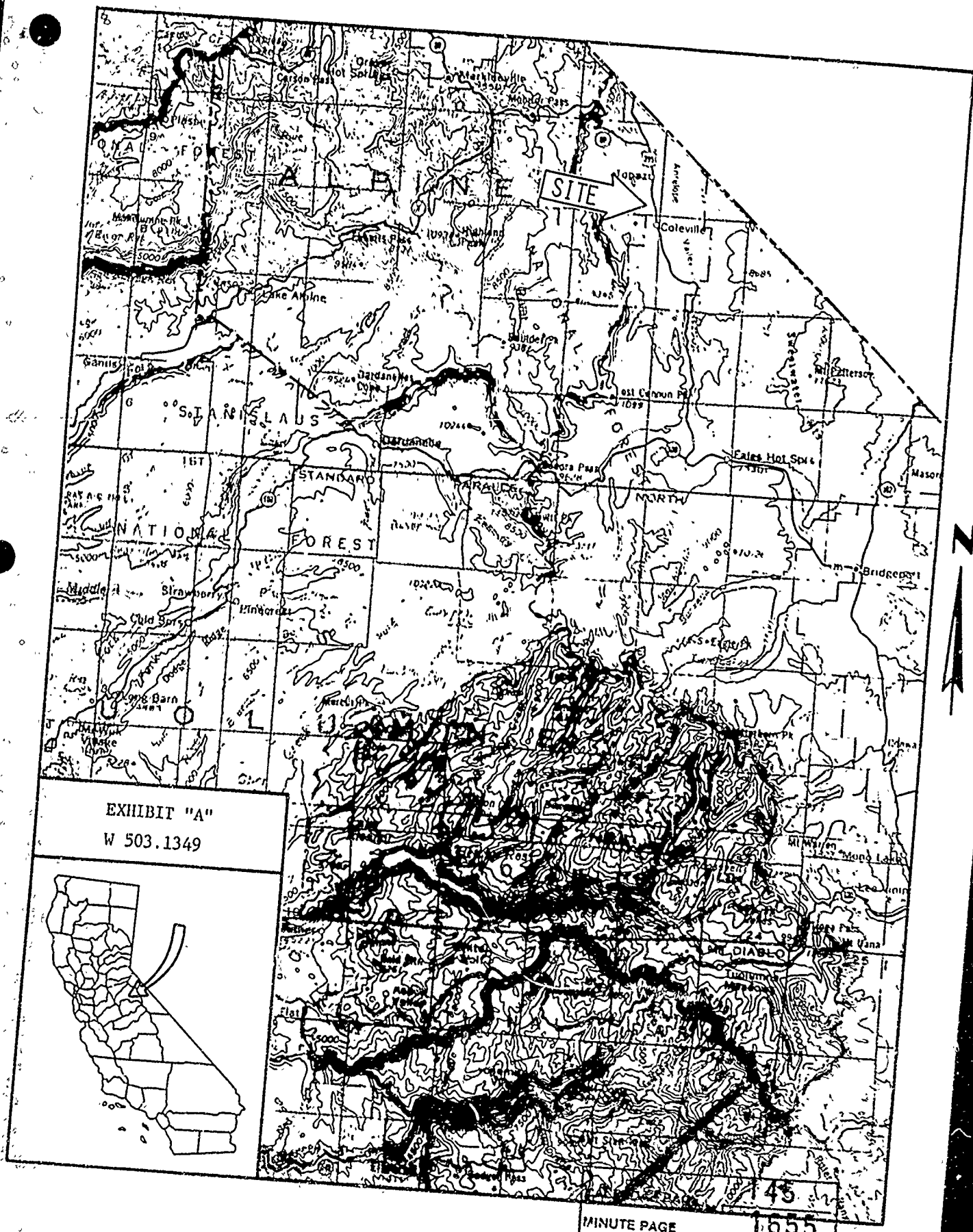


EXHIBIT "A"
W 503.1349



45
MINUTE PAGE 1655

EXHIBIT "B"

PARCEL ONE

The NW 1/4 NW 1/4 of Section 36, T9N, R22E, M.D.M., Mono County State of California, described as follows:

BEGINNING at the northwest corner of said Section 36;

1. Thence along the north line of said NW 1/4 NW 1/4 of Section 36, S 89°40'20" E, 1313.92 feet to the northeast corner of said NW 1/4 NW 1/4 of Section 36;
2. Thence along the east line of said NW 1/4 NW 1/4 of Section 36, S 0°07'23" E, 1339.46 feet to the southeast corner of said NW 1/4 NW 1/4 of Section 36;
3. Thence along the south line of said NW 1/4 NW 1/4 of Section 36, N 89°52'53" W, 1256.47 feet to the southwest corner of said NW 1/4 NW 1/4 of Section 36;
4. Thence along the west line of said NW 1/4 NW 1/4 of Section 36, N 2°34'06" W, 1345.73 feet to the POINT OF BEGINNING.

SUBJECT TO a 20.00 foot wide easement to Continental Telephone Company as described in Book 120, Page 134 of Official Record of said County on February 17, 1971.

Said Parcel One contains 39.6 acres more or less.

PARCEL TWO

A 60.00 foot strip of land as shown on Parcel Map No. 31-49, as per map recorded in Book 2, Page 70 of Parcel Maps in the office of the County Recorder of Mono County, State of California described as follows:

Commencing for a Point of Reference at the southwest corner of the NE 1/4 NW 1/4 of Section 36, T9N, R22E, MDM, thence along the west line of said NE 1/4 NW 1/4 of Section 36, N 0°07'23" W, 518.98 feet to the TRUE POINT OF BEGINNING:

1. Thence along the north line of parcels 3 and 4 per said Parcel Map No. 31-49, S 89°52'53" E, 595.10 to the westerly line of U. S. Highway 395;
2. Thence along said westerly line, N 26°11'08" W, 66.95 feet to the south line of parcel 2 per said Parcel Map No. 31-49;
3. Thence along said south line, N 89°52'53" W, 565.68 feet to the west line of said NE 1/4 NW 1/4 of Section 36;
4. Thence along said west line, S 0°07'23" E, 60.00 feet to the TRUE POINT OF BEGINNING:

SUBJECT TO access rights to abutting owners of said 60 foot strip of land recorded July 28, 1981 in Book 332 Page 147 of Official Records of Mono County

Said Parcel Two contains 0.8 acres, more or less.

CALENDAR PAGE	1656
MINUTE PAGE	