

MINUTE ITEM

This Calendar Item No. 20
was approved as Minute Item
No. 20 by the State Lands
Commission by a vote of 3
to 0 at its 5/24/84
meeting.

A 8
S 4

CALENDAR ITEM

20

05/24/84
W 22843
Miller

TIMBER SALE AGREEMENT
IN LAKE COUNTY

In furtherance of the timber management program endorsed at the May, 1980 Commission meeting, the staff has prepared a harvest plan and solicited sealed bids for the sale of 192,000 board feet of commercial sawtimber within a 40-acre parcel of State school land, five airline miles northeast of Potter Valley in Lake County.

The sale was advertised in April in local newspapers and notices sent to a mailing list of over 80 operators in Northern California. One bid was received as shown on the attached Exhibit "C", at \$33,490 submitted by Steenberg Enterprises. The bid was at the appraised value determined by staff in March 1984.

AB 884: N/A.

OTHER PERTINENT INFORMATION:

1. A Timber Harvesting Plan has been approved by the California Department of Forestry.
2. An environmental analysis document (Timber Harvest Plan) was prepared and certified for this project by the California Department of Forestry (CDF) under its certified program ((14 Cal. Adm. Code 15251(a))).

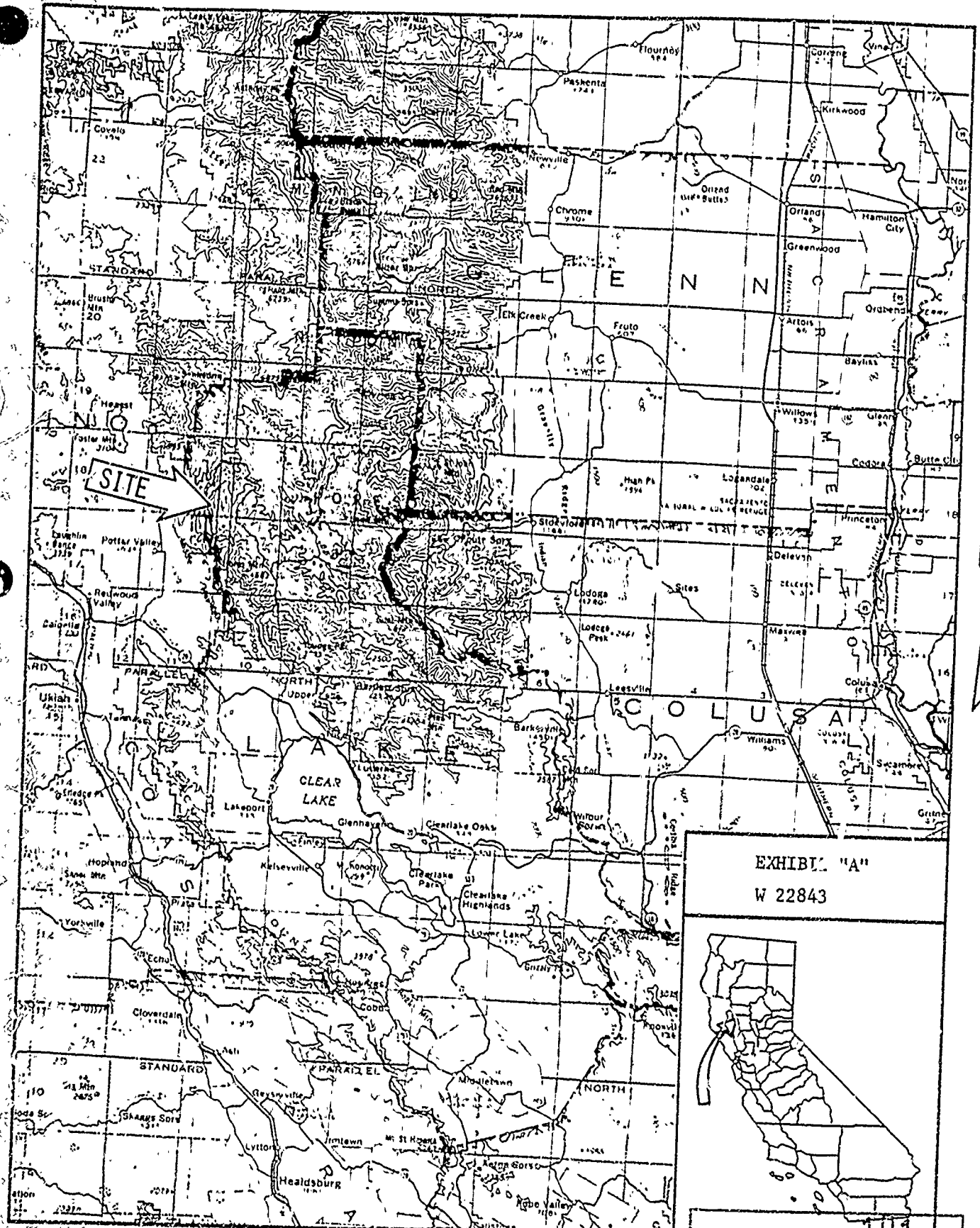
CALENDAR ITEM NO. 20 (CONT'D)

The staff has reviewed the document and determined that the conditions, as specified in 14 Cal. Adm. Code 15253(b), have been met for the Commission, as the Responsible Agency, to use the environmental analysis document prepared and certified by CDF as an EIR substitute in order to comply with the requirements of the CEQA.

- EXHIBITS:
- A. Location Map.
 - B. Summary of Bids.
 - C. Timber Sale Boundary Map.

IT IS RECOMMENDED THAT THE COMMISSION:

1. FIND THAT AN ENVIRONMENTAL ANALYSIS DOCUMENT (TIMBER HARVEST PLAN) WAS PREPARED AND CERTIFIED FOR THIS PROJECT BY THE CALIFORNIA DEPARTMENT OF FORESTRY UNDER ITS CERTIFIED PROGRAM ((14 CAL. ADM. CODE 15251(a)), THAT THE STATE LANDS COMMISSION'S STAFF HAS REVIEWED SUCH DOCUMENT AND THAT THE CONDITIONS AS SPECIFIED IN 14 CAL. ADM. CODE 15253(b) HAVE BEEN MET.
2. DETERMINE THAT THE PROJECT, AS APPROVED, WILL NOT HAVE A SIGNIFICANT EFFECT ON THE ENVIRONMENT.
3. ACCEPT THE BID IN THE AMOUNT OF \$33,490 AND AUTHORIZE ENTERING INTO A TIMBER SALE AGREEMENT WITH STENBERG ENTERPRISES FOR THE SALE OF 192,000 BOARD FEET OF SAWTIMBER IN NE1/4 NE1/4 SECTION 36, T18N, R11W, MDM, LAKE COUNTY, UPON PAYMENT IN FULL OF THE TOTAL BID PRICE AND FURNISHING A PERFORMANCE BOND IN THE AMOUNT OF \$2,000.



To Santa Rosa 15 Miles

EXHIBIT "A"
W 22843

MINUTE PAGE 1078

Bidding Record: PINE MOUNTAIN Timber Sale RW 22843

Species	Volume in MBF	Minimum Bid \$/MBF	Minimum Bid Extension	Bidder	Bidder	Bidder	Bidder	Bidder	Bidder	Bidder
				<i>STENBERG</i>						
				\$/MBF	\$/MBF	\$/MBF	\$/MBF	\$/MBF	\$/MBF	\$/MBF
PP	158	\$185.00	\$29,230	185						
SP	5	\$185.00	\$925	185						
DF	29	\$115.00	\$3,335	115						
Total	192		\$33,490	\$33,490						

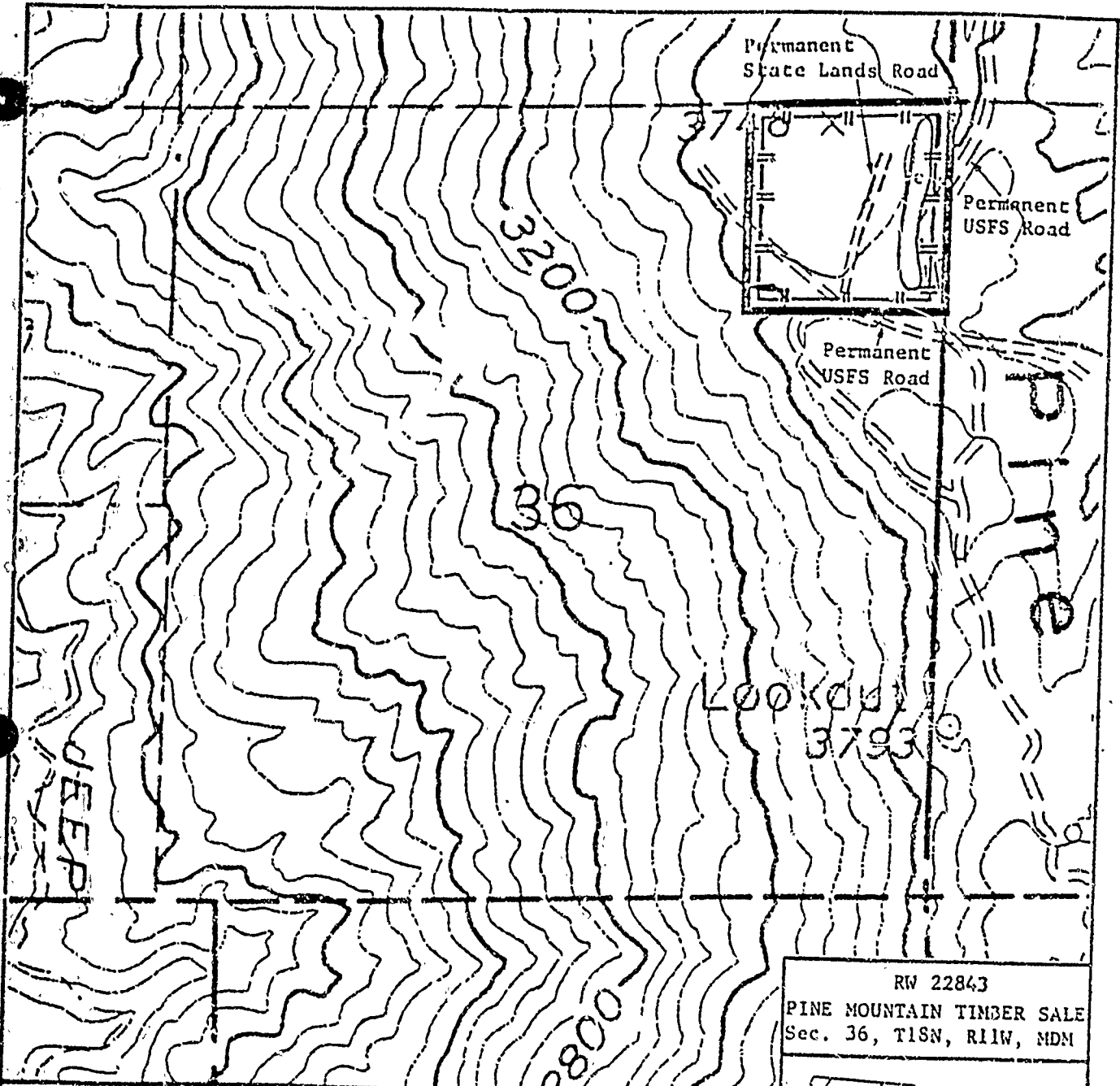
Witness to Proceedings

Date: 5/11/84Belinda J. Anderson, Contracts Officer
State Lands Commission Presiding OfficerTime: 10:37 AMStephen M. Jones
State Lands CommissionPlace: 1807 13TH ST
SACRAMENTOWade R. McDonald
State Lands Commission

MINUTE PAGE

1079

102



RW 22843
 PINE MOUNTAIN TIMBER SALE
 Sec. 36, T18N, R11W, MDM





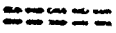

- Scale 1 inca = 1000 feet
-  Property Boundary
 -  Timber Sale Area
Low Erosion Hazard
Rating Boundary
Site Classification II
or Lower
 -  Existing Roads
 -  Equipment Exclusion Zone

EXHIBIT "C"

CALENDAR PAGE 103
 MINUTE PAGE 1080