

MINUTE ITEM

This Calendar Item No. 18
was approved as Minute Item
No. 18 by the State Lands
Commission by a vote of 3
to 0 at its 5/24/84
meeting.

A 1
S 4

CALENDAR ITEM

18

05/24/84
W 22618
Miller

TIMBER SALE AGREEMENT
IN TEHAMA COUNTY

In furtherance of the timber management program endorsed at the May, 1980 Commission meeting, the staff has prepared a harvest plan and solicited sealed bids for the sale of 2,001,000 board feet of commercial sawtimber within a 230-acre portion of State school land, five airline miles south of Mineral in Tehama County.

The sale was advertised in April in local newspapers and notices sent to a mailing list of over 80 operators in Northern California. Four bids were received as shown on the attached Exhibit "C", as of May 11, the bid opening date and the high bid was \$336,522 submitted by Collins Pine Company. This is 25 percent above the appraised value determined by staff in March 1984.

AB 884: N/A.

OTHER PERTINENT INFORMATION:

1. A Timber Harvesting Plan has been approved by the California Department of Forestry.
2. An environmental analysis document (Timber Harvest Plan) was prepared and certified for this project by the California Department of Forestry (CDF) under its certified program (10 Cal. Adm. Code 15251(a)).

CALENDAR PAGE	89
MINUTE PAGE	1066

CALENDAR ITEM NO. 18 (CONT'D)

The staff has reviewed the document and determined that the conditions, as specified in 14 Cal. Adm. Code 15253(b), have been met for the Commission, as a Responsible Agency, to use the environmental analysis document prepared and certified by CDF as an EIR substitute in order to comply with the requirements of the California Environmental Quality Act.

- EXHIBITS:
- A. Location Map.
 - B. Summary of Bids.
 - C. Timber Sale Boundary Map.

IT IS RECOMMENDED THAT THE COMMISSION:

1. FIND THAT AN ENVIRONMENTAL ANALYSIS DOCUMENT (TIMBER HARVEST PLAN) WAS PREPARED AND CERTIFIED FOR THIS PROJECT BY THE CALIFORNIA DEPARTMENT OF FORESTRY UNDER ITS CERTIFIED PROGRAM (14 CAL. ADM. CODE 15251(a)), THAT THE STATE LANDS COMMISSION'S STAFF HAS REVIEWED SUCH DOCUMENT AND THAT THE CONDITIONS AS SPECIFIED IN 14 CAL. ADM. CODE 15253(b) HAVE BEEN MET.
2. DETERMINE THAT THE PROJECT, AS APPROVED, WILL NOT HAVE A SIGNIFICANT EFFECT ON THE ENVIRONMENT.
3. ACCEPT THE BID IN THE AMOUNT OF \$336,522 AND AUTHORIZE ENTERING INTO A TIMBER SALE AGREEMENT WITH COLLINS PINE COMPANY FOR THE SALE OF 2,001,000 BOARD FEET OF SAWTIMBER IN NW1/4 AND 51/2 SECTION 16, T28N, R3E, MDM, LAKE COUNTY, UPON PAYMENT IN FULL OF THE TOTAL BID PRICE AND FURNISHING A PERFORMANCE BOND IN THE AMOUNT OF \$5,000.

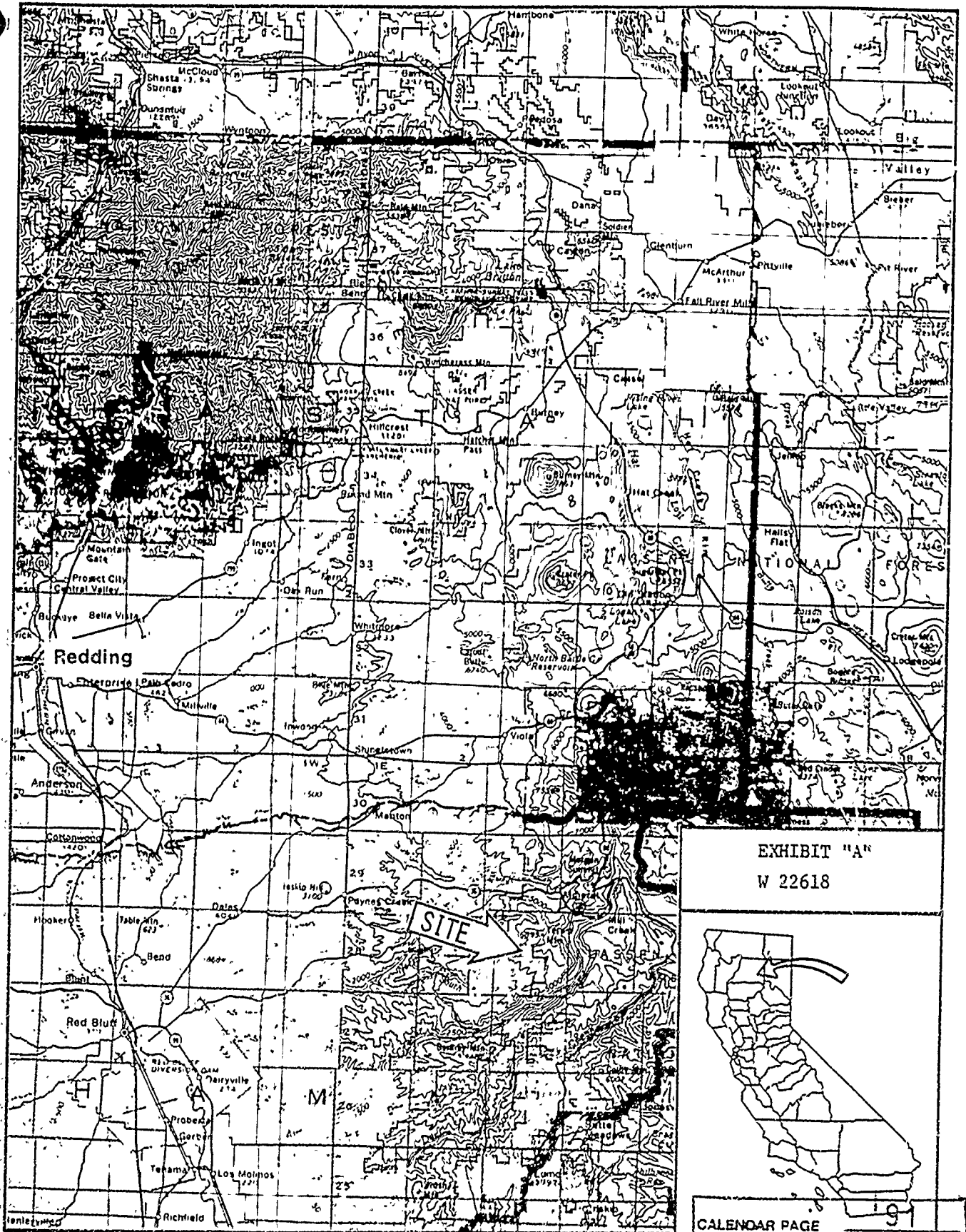


EXHIBIT "A"
W 22618



CALENDAR PAGE 19
MINUTE PAGE 1068

EXHIBIT 3

Bidding Record: MINERAL Timber Sale RW 22618

Species	Volume in MBF	Minimum Bid \$/MBF	Minimum Bid Extension	Bidder	Bidder	Bidder	Bidder	Bidder	Bidder
				ROSEBURG	SIERRA PACIFIC	COLLINS PINE	STENBERG		
				\$/MBF	\$/MBF	\$/MBF	\$/MBF	\$/MBF	\$/MBF
PP	175	\$197.00	\$34,475	197	200	197	300		
SP	1055	\$197.00	\$207,835	197	200	260	197		
WF	695	\$32.00	\$22,240	32	40	32	32		
RF	35	\$32.00	\$1,120	32	40	32	32		
IC	41	\$107.00	\$4,387	154.39	110	107	107		
Total	2001		\$270,057	\$271,999.99	\$279,710	\$336,522	\$288,082		

Witness to Proceedings

Belinda Anderson, Contracts Officer

State Lands Commission Presiding Officer

Stephen M. Jones

State Lands Commission

[Signature]
State Lands CommissionCALENDAR PAGE
MINUTE PAGE

1059

92

Date: 5/11/84Time: 10:00 AMPlace: 1807 13TH ST
SACRAMENTO

Monterey

Pt

3E15-1

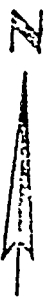
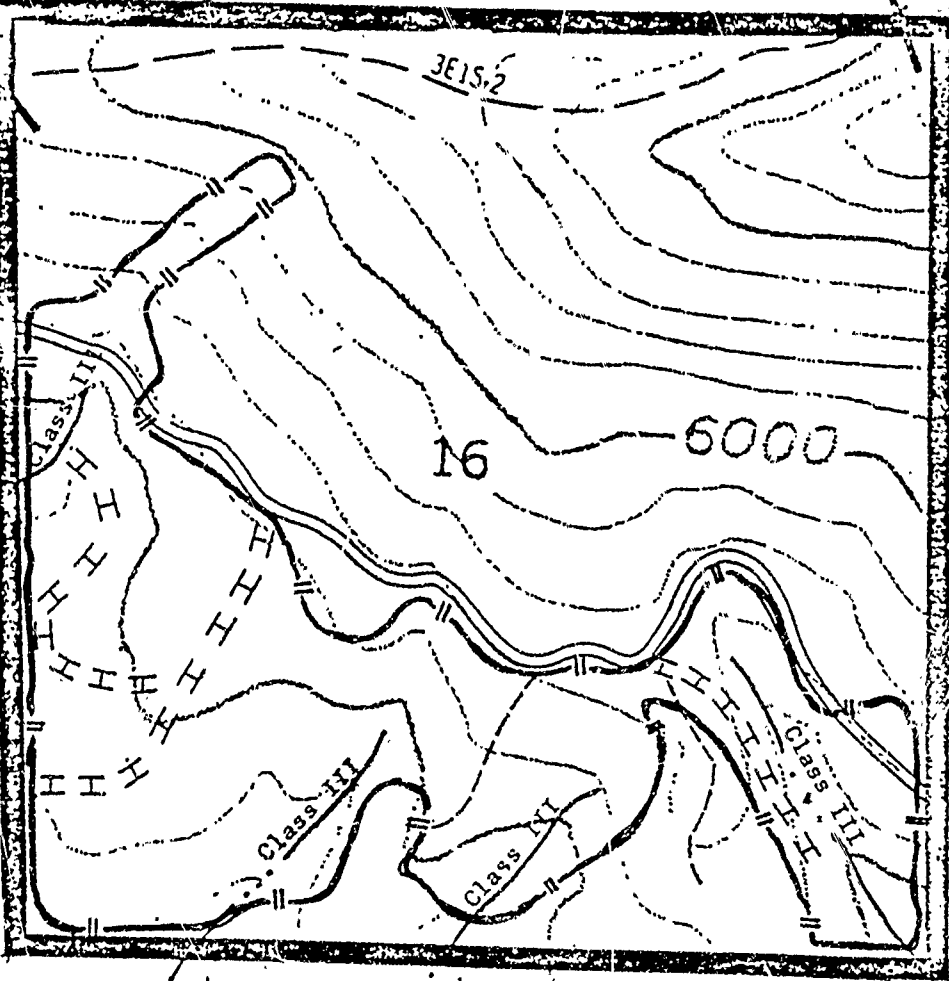
3E15-2

5500

15


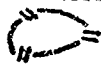

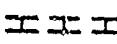
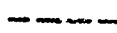
16

6000



RW 22618
 MINERAL TIMBER SALE
 Sec. 16, T28N, R3E, MDM

Scale 1 inch = 1000 feet

-  Property Boundary
-  Timber Sale Boundary
-  Existing Road
-  New Construction
-  4-Wheel Drive Road



* - Moderate Erosion Hazard Rating Dunning Site III - *

EXHIBIT "C"

CALENDAR PAGE 93
 MINUTE PAGE 1070