

MINUTE ITEM

This Calendar Item No. 43
was approved as Minute Item
No. 43 by the State Lands
Commission by a vote of 3
to 0 at its 12/30/81
meeting.

CALENDAR ITEM

43

10/30/81
W 503.1184
Hadly

AUTHORIZATION TO FILE DISCLAIMER REGARDING
UNITED STATES OF AMERICA V. 280 ACRES
OF LAND, MORE OR LESS, ET AL.,
UNITED STATES DISTRICT COURT, EASTERN DISTRICT,
DISTRICT OF CALIFORNIA, CIVIL NO. S-81-558 MLS,
TRINITY COUNTY

The State Lands Commission is a party to a United States
condemnation action brought by the United States Attorney
entitled, United States of America v. 49.21 Acres of Land,
More or Less, etc., et al., filed in the United States
District Court, Eastern District of California, Civil
No. S-81-535 MLS involving land in Trinity County to be
used in connection with the development, protection,
administration and utilization of public lands for the
Vitztham Gulch access road. The taking is for an easement.

Upon examination of the Commission's records pertinent
to the area, it has been ascertained that although there
may be the possibility of an interest held by the State
Lands Commission as to the tract of land described in the
notice of condemnation based on a small creek that crosses
the subject parcel the amount of compensation that would
be due the State would be minimal, assuming that the State
could in fact prove a compensable interest.

It is recommended that a disclaimer of right of compensation
but not in interest be filed on behalf of the State Lands
Commission disclaiming any right of compensation in the
tract of the subject condemnation but not of any title
or interest.

AB 884: N/A.

EXHIBIT: A. Site Map.

IT IS RECOMMENDED THAT THE COMMISSION:

1. AUTHORIZE THE ATTORNEY GENERAL TO FILE A DISCLAIMER
OF ANY RIGHT OF COMPENSATION ON BEHALF OF THE STATE LANDS
COMMISSION IN THE CASE OF UNITED STATES OF AMERICA V. 280
ACRES OF LAND, MORE OR LESS, IN THE COUNTY OF TRINITY,
STATE OF CALIFORNIA, ETC., ET AL., UNITED STATES DISTRICT
COURT, EASTERN DISTRICT OF CALIFORNIA, CIVIL NO. S-81-558 MLS.

A 1

S 1

CALENDAR PAGE	159
MINUTE PAGE	2228

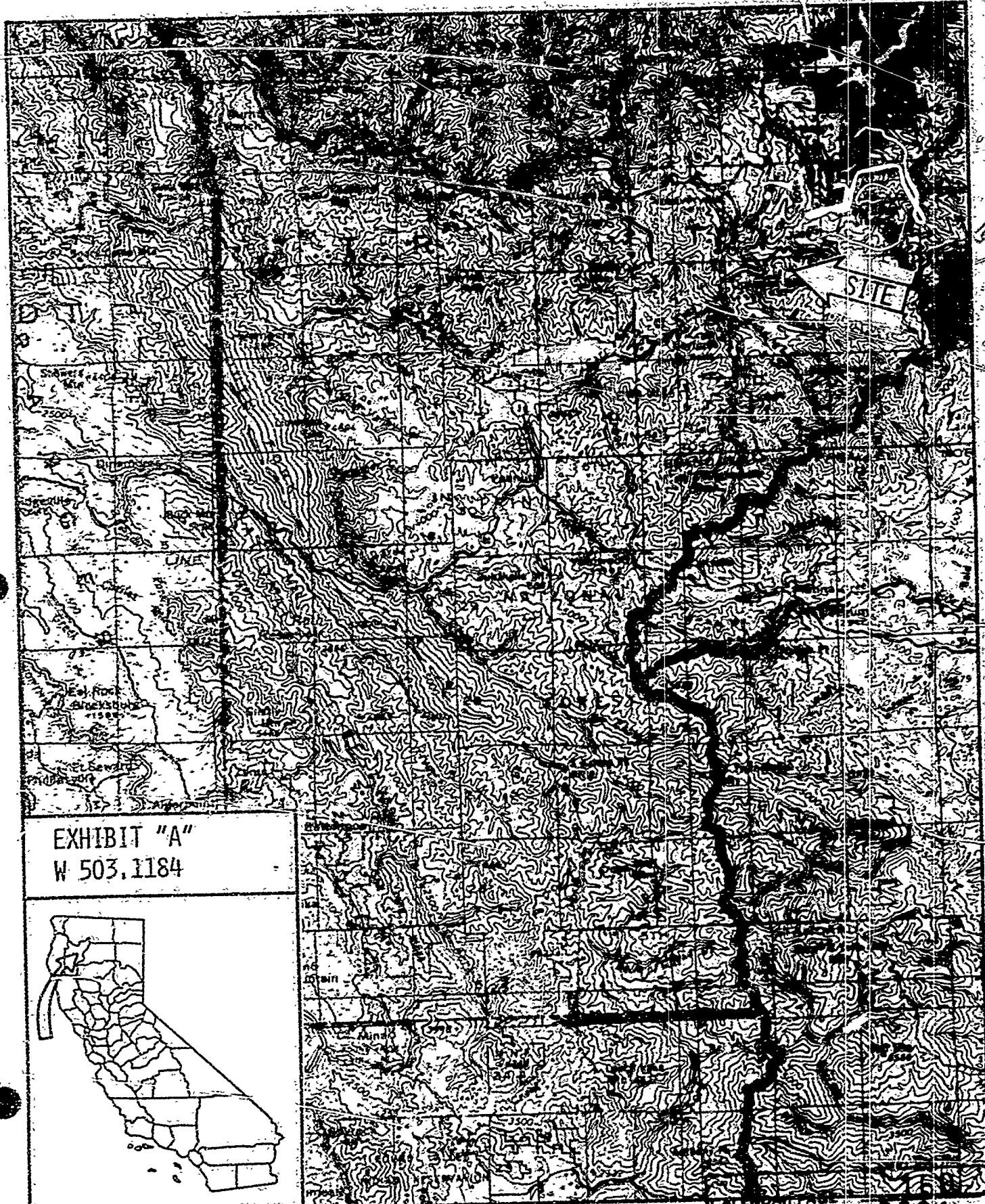


EXHIBIT "A"
W 503.1184

